

Manuals+

[Q & A](#) | [Deep Search](#) | [Upload](#)

Manuals.plus /

› [EDUP](#) /

› EDUP Starlink Mini Battery Pack User Manual - Model EP-SK0115

EDUP EP-SK0115

EDUP Starlink Mini Battery Pack User Manual

Model: EP-SK0115

1. INTRODUCTION AND OVERVIEW

The EDUP Starlink Mini Battery Pack is a compact and portable power solution designed specifically for the Starlink Mini system. Weighing approximately 0.85kg, this battery pack ensures stable network connectivity for various outdoor activities such as traveling, camping, or setting up off-grid power supplies. It features a durable design with high-quality components for consistent performance.

This portable charger is equipped with built-in safety protections and operates within a charging range of 0°C to +45°C and a discharging range of -20°C to +60°C. A fully charged unit can power the Starlink Mini continuously for 4 to 5 hours.



Image: The EDUP Starlink Mini Battery Pack, showing its compact design alongside the included charger and power cables.

Starlink Terminal Model Compatibility

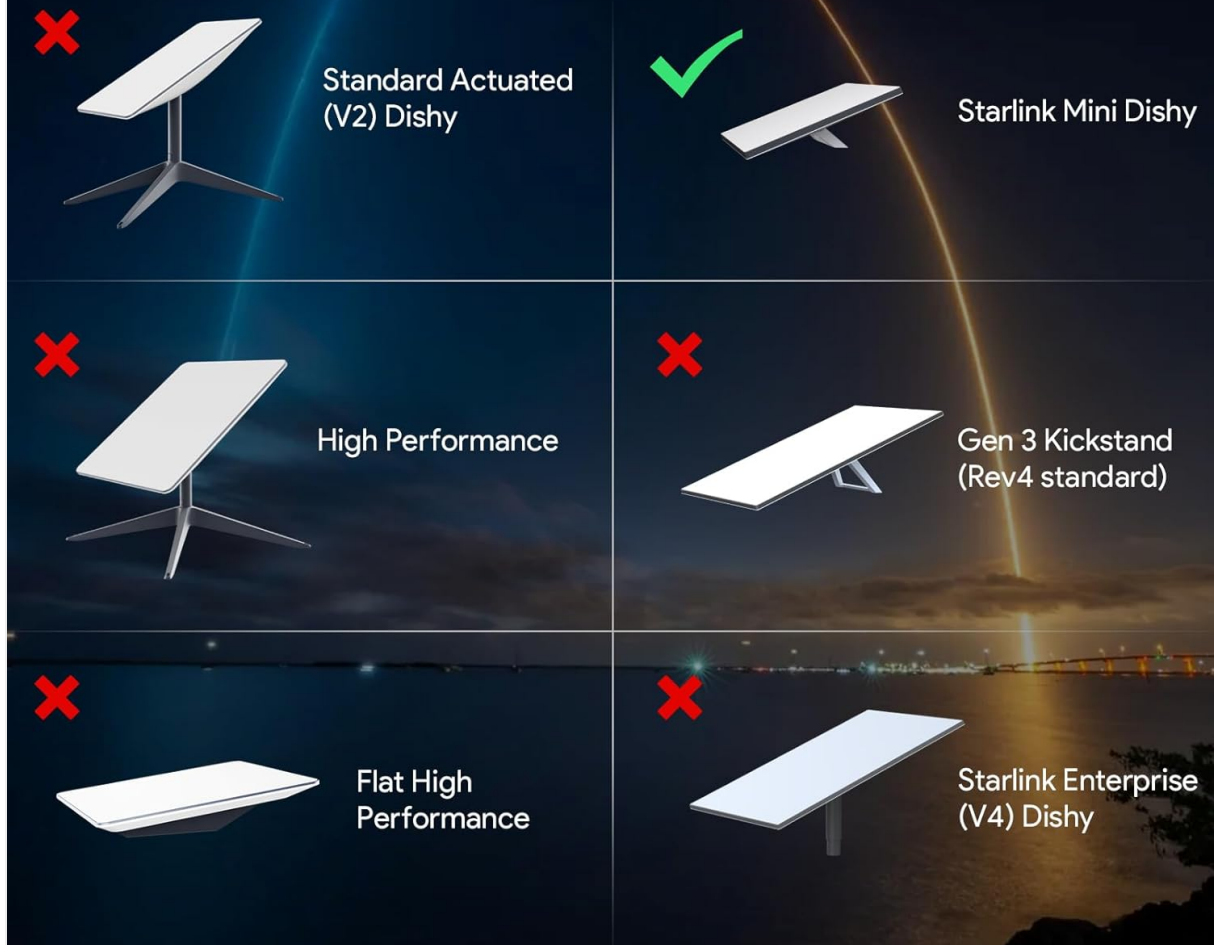


Image: The Starlink Mini Battery Pack in use with a Starlink Mini dish in an outdoor setting, demonstrating its portability for remote internet access.

2. PACKAGE CONTENTS

Please verify that all items listed below are included in your package:

- 1 × Starlink Mini Battery Pack
- 1 × Charger
- 2 × Power Cables
- 1 × User Manual

Note: The Starlink Mini pipe adapter and Flat mount are not included with this product.

List of the Package

- 1 Starlink Mini Battery*1
- 2 Charger*1
- 3 Power Cable*2
- 4 User Manual*1



Image: A visual representation of the package contents, including the battery pack, charger, two power cables, and the user manual.

3. COMPATIBILITY

This battery pack is exclusively designed for the Starlink Mini system. It is fully compatible with both 2024 and 2025 versions of the Starlink Mini Dish. This product is not suitable for other Starlink devices such as Standard Actuated (V2) Dishy, High Performance, Gen 3 Kickstand (Rev4 standard), Flat High Performance, or Starlink Enterprise (V4) Dishy.

MINI Device Connection and Power Supply Guide

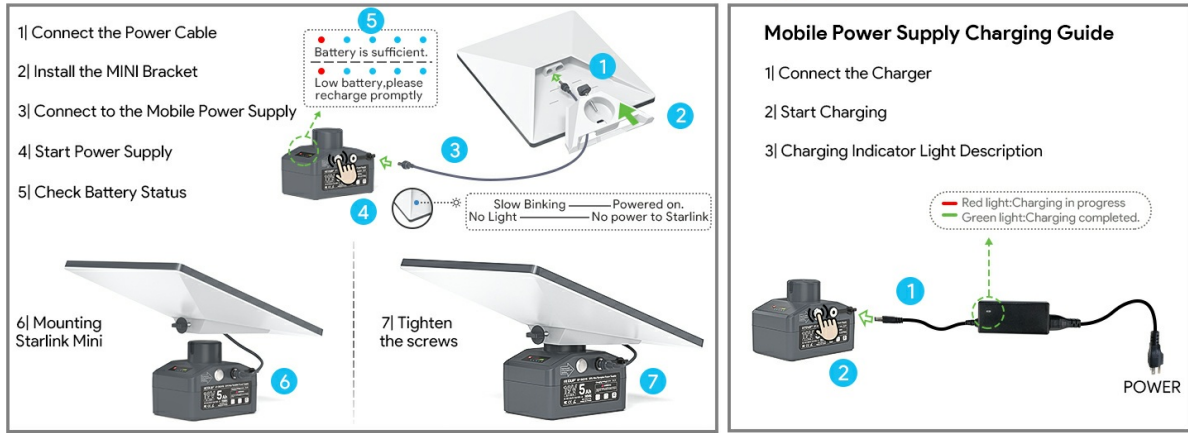


Image: A chart illustrating compatibility with various Starlink terminal models, confirming suitability only for Starlink Mini Dishy.



Image: A visual comparison showing the compatibility of the battery pack with both 2024 and 2025 versions of the Starlink Mini, highlighting the different mounting mechanisms.

4. SETUP INSTRUCTIONS

The EDUP Starlink Mini Battery Pack offers a quick plug-and-play setup for immediate use.

- 1. Connect the Power Cable:** Insert one end of the provided power cable into the Starlink Mini dish.
- 2. Install the Mini Bracket:** Securely attach the Starlink Mini bracket to the battery pack.
- 3. Connect to the Mobile Power Supply:** Connect the other end of the power cable from the Starlink Mini to the battery pack.
- 4. Start Power Supply:** Press the power button on the battery pack to initiate power to the Starlink Mini.
- 5. Check Battery Status:** Observe the battery indicator lights on the pack. Slow blinking indicates power is on. No light indicates no power to Starlink.
- 6. Mounting Starlink Mini:** Place the Starlink Mini onto the battery pack's integrated mount.
- 7. Tighten the Screws:** Secure the Starlink Mini to the battery pack by tightening the screws on the mount.

Compatible



Image: A detailed diagram illustrating the connection and power supply guide for the Starlink Mini and the battery pack, including battery status indicators.

5. OPERATING INSTRUCTIONS

Power On/Off

The battery pack features a simple button switch for managing power. Press the round button on the side of the battery pack to turn the power on or off. This allows for flexible power management, optimizing power efficiency and conservation.



Image: A close-up view of the battery pack highlighting the button switch for power control and battery indicator lights.

Charging the Battery Pack

To charge the EDUP Starlink Mini Battery Pack:

1. **Connect the Charger:** Plug the charger into a power outlet and connect the charging cable to the battery pack's charging port.
2. **Start Charging:** Charging will begin automatically.
3. **Charging Indicator Light Description:** The indicator light on the charger will show red during charging and turn green when charging is complete.

The battery pack cannot be charged while simultaneously powering the Starlink Mini (no pass-through charging).

Battery Life

After a full charge, the battery pack can power the Starlink Mini continuously for approximately 4 to 5 hours, depending on usage and environmental conditions.

6. MAINTENANCE

- **Storage:** Store the battery pack in a cool, dry place away from direct sunlight and extreme temperatures.
- **Cleaning:** Use a soft, dry cloth to clean the exterior of the battery pack. Do not use liquid cleaners or immerse the unit in water.
- **Charging Cycles:** For optimal battery longevity, avoid completely draining the battery frequently. Recharge promptly when the battery level is low.
- **Inspection:** Periodically inspect the power cables and connectors for any signs of damage. Do not use if damaged.

7. TROUBLESHOOTING

- **No Power to Starlink Mini:**
 - Ensure the battery pack is turned on by pressing the power button.
 - Check if the battery pack is sufficiently charged. Recharge if the indicator shows low battery.
 - Verify all power cables are securely connected between the Starlink Mini and the battery pack.
- **Battery Not Charging:**
 - Confirm the charger is properly plugged into a working power outlet.
 - Ensure the charging cable is firmly connected to both the charger and the battery pack.
 - Check the charging indicator light on the charger (red for charging, green for full).
 - Ensure the battery pack is not simultaneously powering the Starlink Mini, as pass-through charging is not supported.
- **Short Battery Life:**
 - Battery life can vary based on Starlink Mini usage (e.g., streaming uses more power than browsing).
 - Ensure the battery is fully charged before use.
 - Operating in extremely cold temperatures can reduce battery performance.

8. SPECIFICATIONS

Brand	EDUP
-------	------

Model Number	EP-SK0115
Battery Capacity	5 Amp Hours (95Wh)
Voltage	19 Volts
Reusability	Rechargeable
Battery Cell Type	Lithium Ion
Item Weight	1300 Grams
Item Dimensions	3.31 x 4.02 x 2.52 inches
Charging Temperature Range	0°C to +45°C
Discharging Temperature Range	-20°C to +60°C

9. WARRANTY AND SUPPORT

This EDUP product comes with a **3-year warranty** from the date of purchase. For warranty claims or technical support, please contact Shenzhen EDUP Electronics Technology Co., Ltd. through their official channels or the retailer where the product was purchased.

10. PRODUCT VIDEO

Video: An official product video from EDUP demonstrating the features and usage of the Portable Rechargeable Battery Pack with Mount for Starlink Mini. This video provides a visual guide to the product's functionality and installation.