



Manuals.plus /

› LMFUEN /

› LMFUEN Mini Portable Rice Cooker (Model LMFRC-208A) Instruction Manual

LMFUEN LMFRC-208A

LMFUEN Mini Portable Rice Cooker (Model LMFRC-208A) Instruction Manual

Your guide to effortless cooking

1. INTRODUCTION

Thank you for choosing the LMFUEN Mini Portable Rice Cooker, Model LMFRC-208A. This versatile appliance is designed to simplify your cooking experience with its compact size, non-stick inner pot, and 10 pre-set functions. Please read this manual thoroughly before use to ensure safe and optimal operation.

2. IMPORTANT SAFETY INSTRUCTIONS

- Read all instructions before using the appliance.
- Do not touch hot surfaces. Use handles or knobs.
- To protect against electrical shock, do not immerse cord, plugs, or the main unit in water or other liquid.
- Close supervision is necessary when any appliance is used by or near children.
- Unplug from outlet when not in use and before cleaning. Allow to cool before putting on or taking off parts.
- Do not operate any appliance with a damaged cord or plug, or after the appliance malfunctions or has been damaged in any manner.
- The use of accessory attachments not recommended by the appliance manufacturer may cause injuries.
- Do not use outdoors.
- Do not let cord hang over edge of table or counter, or touch hot surfaces.
- Do not place on or near a hot gas or electric burner, or in a heated oven.
- Extreme caution must be used when moving an appliance containing hot oil or other hot liquids.
- Always attach plug to appliance first, then plug cord into the wall outlet. To disconnect, turn any control to “off,” then remove plug from wall outlet.
- Do not use appliance for other than intended use.

3. PACKAGE CONTENTS

Upon unpacking, please ensure all items listed below are present and in good condition:

- LMFUEN Mini Portable Rice Cooker Main Unit
- Non-Stick Inner Pot
- Measuring Cup
- Rice Spoon
- Power Cord



Image: The LMFUEN Mini Portable Rice Cooker shown with its non-stick inner pot, measuring cup, rice spoon, and power cord.

4. PRODUCT OVERVIEW

Familiarize yourself with the components of your rice cooker:

- **Main Unit:** Houses the heating element and control panel.
- **Lid:** Top cover with a steam vent.
- **Control Panel:** Digital display and touch buttons for various functions and settings.
- **Inner Pot:** Removable non-stick pot for cooking. Features water level markings.
- **Steam Vent:** Located on the lid, releases excess steam during cooking.



Image: A detailed view of the rice cooker's control panel, displaying various cooking functions, and the inner pot with clear measurement lines.

5. SETUP

5.1 First Use

1. Remove all packaging materials and labels.
2. Wash the inner pot, measuring cup, and rice spoon with warm, soapy water. Rinse thoroughly and dry.
3. Wipe the exterior of the main unit with a damp cloth. Do not immerse the main unit in water.

5.2 Placing the Inner Pot

Ensure the inner pot is properly seated inside the main unit before cooking.

Your browser does not support the video tag.

Video: Demonstration of correctly placing the non-stick inner pot into the rice cooker's main unit and closing the lid.

6. OPERATING INSTRUCTIONS

6.1 Basic Rice Cooking

1. Measure the desired amount of rice using the provided measuring cup. Rinse the rice thoroughly until the water runs clear.
2. Place the rinsed rice into the inner pot. Add water according to the markings inside the pot or your preference. For example, for 1 cup of rice, fill water to the '1' mark.
3. Place the inner pot into the rice cooker and close the lid securely.
4. Plug the power cord into a wall outlet. The display will light up.
5. Select your desired cooking function (e.g., 'Quick cooking' or 'Refined cooking') by pressing the 'Function' button until the indicator light for your choice illuminates.
6. Press the 'Start' button to begin cooking. The cooker will automatically switch to 'Warm' mode once cooking is complete.

6.2 Using the 10 Functions

The LMFUEN rice cooker offers 10 pre-set functions for various dishes:

- **Quick cooking:** For faster rice preparation.
- **Refined cooking:** For perfectly cooked, fluffy rice.
- **Low sugar rice:** Special function to reduce sugar content in rice.
- **Cook:** General cooking function.
- **Hot rice:** To reheat or keep rice warm.
- **Porridge:** For preparing various types of porridge.
- **Soup:** For cooking soups and broths.
- **Mixed grain rice:** Optimized for cooking mixed grains.
- **Stew and stew:** For slow-cooked stews.
- **Steamed Cake:** For baking cakes.

To select a function, press the 'Function' button repeatedly until the desired program's indicator light is on, then press 'Start'.

10 Presets for Easy Cooking

Quick rice, Brown rice, Porridge, Soup, Cake, Stew

10 functions



Image: The rice cooker's control panel highlighting its 10 functions, accompanied by images of various dishes that can be prepared, such as porridge, soup, mixed grain rice, stew, and cake.

6.3 Using the 24-Hour Timer Delay

The timer delay function allows you to set a specific time for your meal to be ready.

1. Prepare your ingredients (e.g., rice and water) in the inner pot.
2. Place the inner pot in the cooker and close the lid.
3. Press the 'Preset Timing' button. The display will show a default delay time.
4. Use the '+' or '-' buttons (if available, or repeated presses of 'Preset Timing' if it cycles) to adjust the desired delay time (up to 24 hours).
5. Select your desired cooking function (e.g., 'Porridge') by pressing the 'Function' button.
6. Press the 'Start' button. The timer will count down, and cooking will begin automatically once the delay time expires.

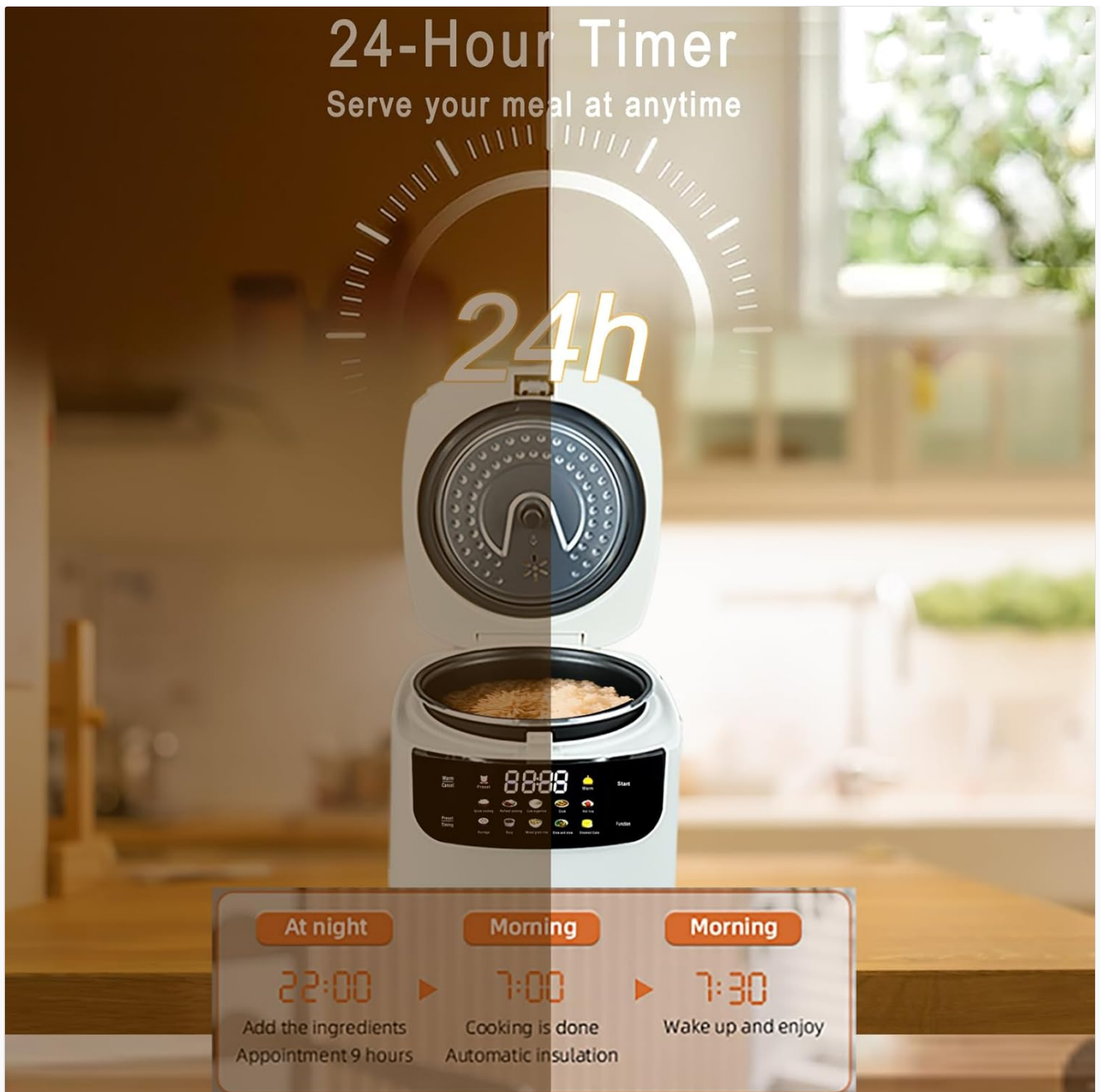


Image: A visual representation of the 24-hour timer delay feature, showing how to set the cooker to have a meal ready at a specific time, such as preparing ingredients at night for a morning meal.

6.4 Keep Warm Function

After cooking, the rice cooker automatically switches to 'Warm' mode to keep your food at an optimal serving temperature. To manually activate or deactivate the 'Warm' function, press the 'Warm' button.

Your browser does not support the video tag.

Video: A demonstration of the rice cooker's various cooking functions, including preparing porridge, mixed rice, hot pot, and cake, showcasing its versatility.

7. MAINTENANCE AND CLEANING

Regular cleaning ensures the longevity and optimal performance of your rice cooker.

1. Always unplug the rice cooker from the power outlet and allow it to cool completely before cleaning.
2. **Inner Pot:** The non-stick inner pot should be hand washed with warm, soapy water and a soft sponge. Do not use abrasive cleaners or metal scouring pads, as this can damage the non-stick coating. Rinse thoroughly and

dry.

3. **Lid:** The inner lid can be removed for thorough cleaning. Wash with warm, soapy water, rinse, and dry completely before reattaching.
4. **Main Unit Exterior:** Wipe the exterior of the rice cooker with a damp cloth. Do not immerse the main unit in water or any other liquid.
5. **Steam Vent:** Ensure the steam vent on the lid is clear of any food debris.

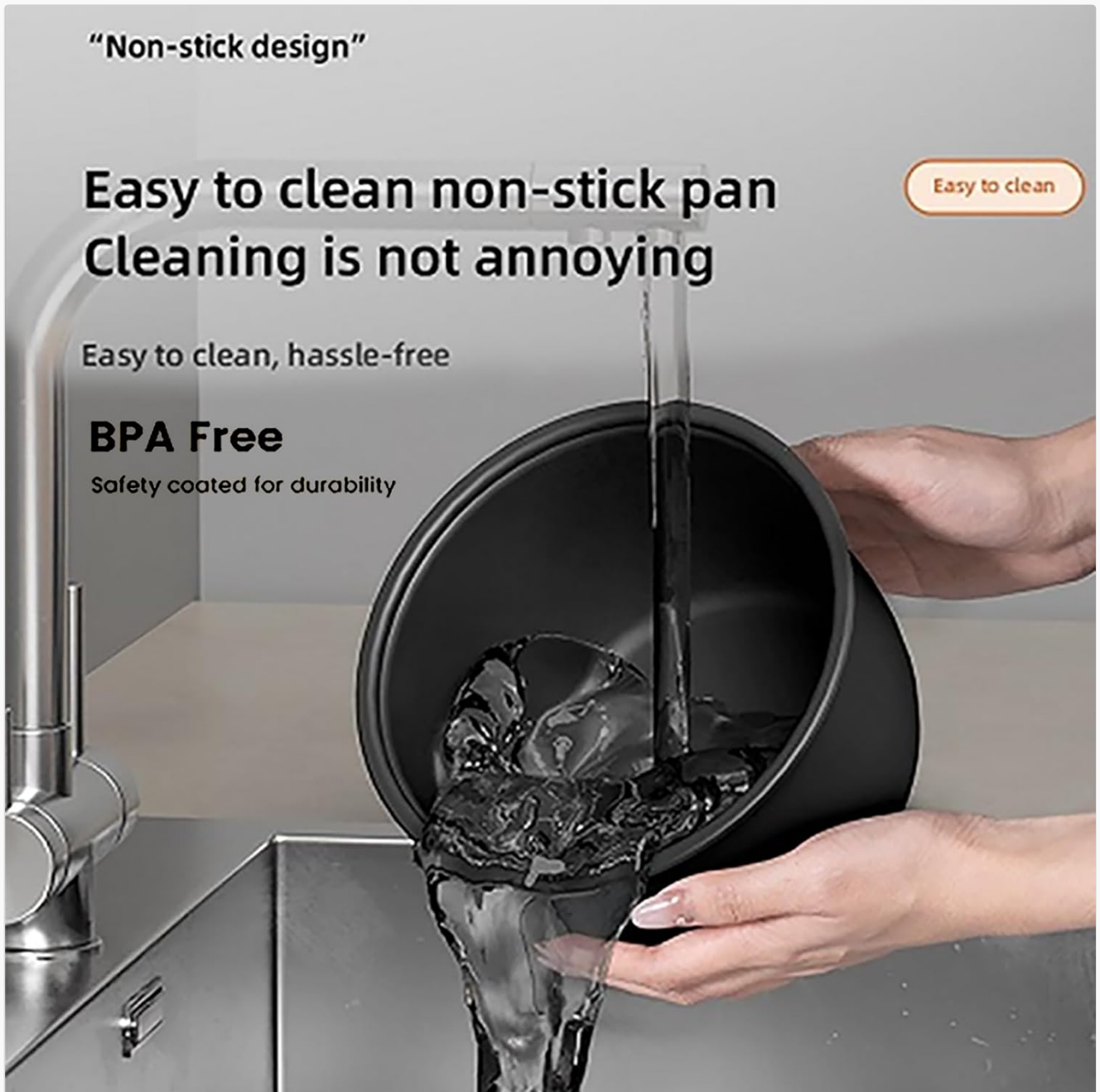


Image: The non-stick inner pot being rinsed under a faucet, demonstrating its easy-to-clean surface.

8. TROUBLESHOOTING

If you encounter any issues with your rice cooker, please refer to the following common problems and solutions:

Problem	Possible Cause	Solution
Cooker does not turn on.	Not plugged in; power outage; faulty outlet.	Ensure the power cord is securely plugged into a working outlet. Check your home's circuit breaker.
Rice is undercooked or too hard.	Insufficient water; incorrect cooking function selected; lid not properly closed.	Add more water next time. Ensure the correct function is selected. Close the lid securely.
Rice is overcooked or mushy.	Too much water; incorrect cooking function selected.	Reduce water amount next time. Ensure the correct function is selected.
Food sticks to the inner pot.	Non-stick coating damaged; insufficient water.	Avoid using metal utensils. Ensure proper water-to-rice ratio.
Steam leaks from the lid.	Lid not properly closed; seal damaged; steam vent blocked.	Ensure the lid is closed tightly. Check the lid seal for damage. Clean the steam vent.

If the problem persists after trying these solutions, please contact customer support.

9. SPECIFICATIONS

Feature	Detail
Brand	LMFUEN
Model Name	FRC-208A
Item Model Number	LMFRC-208A
Capacity	2 Liters (5 cups cooked / 3 cups uncooked)
Power Source	Corded Electric
Rated Power	400W
Product Dimensions	8.46"D x 9.25"W x 7.85"H
Item Weight	4.41 pounds
Color	White
Special Feature	Non-Stick Inner Pot, 24-Hour Timer Delay, 10 Functions
Material	Aluminum (Inner Pot), Plastic+Aluminum (Lid)
Product Care Instructions	Hand Wash

10. WARRANTY AND SUPPORT

LMFUEN products are manufactured to high-quality standards. For warranty information or technical support, please refer to the warranty card included with your purchase or contact LMFUEN customer service through the retailer where the product was purchased. Please have your model number (LMFRC-208A) and purchase date ready when contacting support.

