

Carlinkit CPC200-Tbox

Carlinkit Wireless CarPlay Adapter with Android 13.0 System (Model CPC200-Tbox) User Manual

Enhance your in-car experience with advanced multimedia and connectivity.

1. INTRODUCTION

This manual provides comprehensive instructions for the installation, operation, and maintenance of your Carlinkit Wireless CarPlay Adapter with Android 13.0 System. Please read this manual thoroughly before using the device to ensure optimal performance and safety. This device is designed to upgrade your vehicle's infotainment system by providing wireless CarPlay, wireless Android Auto, and access to various Android applications.

2. PRODUCT OVERVIEW

The Carlinkit Wireless CarPlay Adapter (Model CPC200-Tbox) is a versatile multimedia box that integrates the Android 13.0 operating system into your car's display. It features a Qualcomm SM6115 Quad-core processor, Adreno 610 GPU, 4GB RAM, and 64GB internal storage, ensuring smooth performance for various applications.

Key Features:

- Wireless CarPlay and Wireless Android Auto functionality.
- Integrated Android 13.0 system.
- Support for popular streaming applications such as Netflix, YouTube, and TikTok.
- Qualcomm SM6115 Quad-core processor with Adreno 610 GPU.
- 4GB RAM + 64GB ROM for efficient multitasking and storage.
- Voice control support for Siri and Google Assistant.
- GPS+Glonass navigation support.

What's in the Box:

- 1x Carlinkit Wireless CarPlay Adapter (CPC200-Tbox)

- 2x Data Cables (USB-A to USB-C, USB-C to USB-C)
- 1x Product Manual



Image 2.1: The Carlinkit Wireless CarPlay Adapter shown with examples of its interface on a car screen, displaying navigation, music, and video applications.



Image 2.2: The complete package contents, including the Carlinkit device, two data cables (USB-A to USB-C and USB-C to USB-C), and the user manual.

3. SETUP

Follow these steps for the initial setup of your Carlinkit Wireless CarPlay Adapter:

1. **Prepare Your Vehicle:** Ensure your car has an OEM wired CarPlay or wired Android Auto system. The device requires a USB port for connection.
2. **Connect the Adapter:** Using one of the provided data cables (USB-A to USB-C or USB-C to USB-C, depending on your car's port), connect the Carlinkit adapter to your car's USB port.
3. **Initial Boot-up:** Once connected, the adapter will power on, and an indicator light on the device will illuminate. Your car's screen should display the Carlinkit interface or prompt for CarPlay/Android Auto activation.
4. **Pair Your Phone:** On your phone, enable Bluetooth and Wi-Fi. Search for the Carlinkit device in your Bluetooth settings and pair with it. Follow any on-screen prompts on your car's display to complete the connection for Wireless CarPlay or Wireless Android Auto.

Built-in YouTube and Netflix APPs

Watching YouTube, Netflix and other video Apps in your car is no longer a challenge.

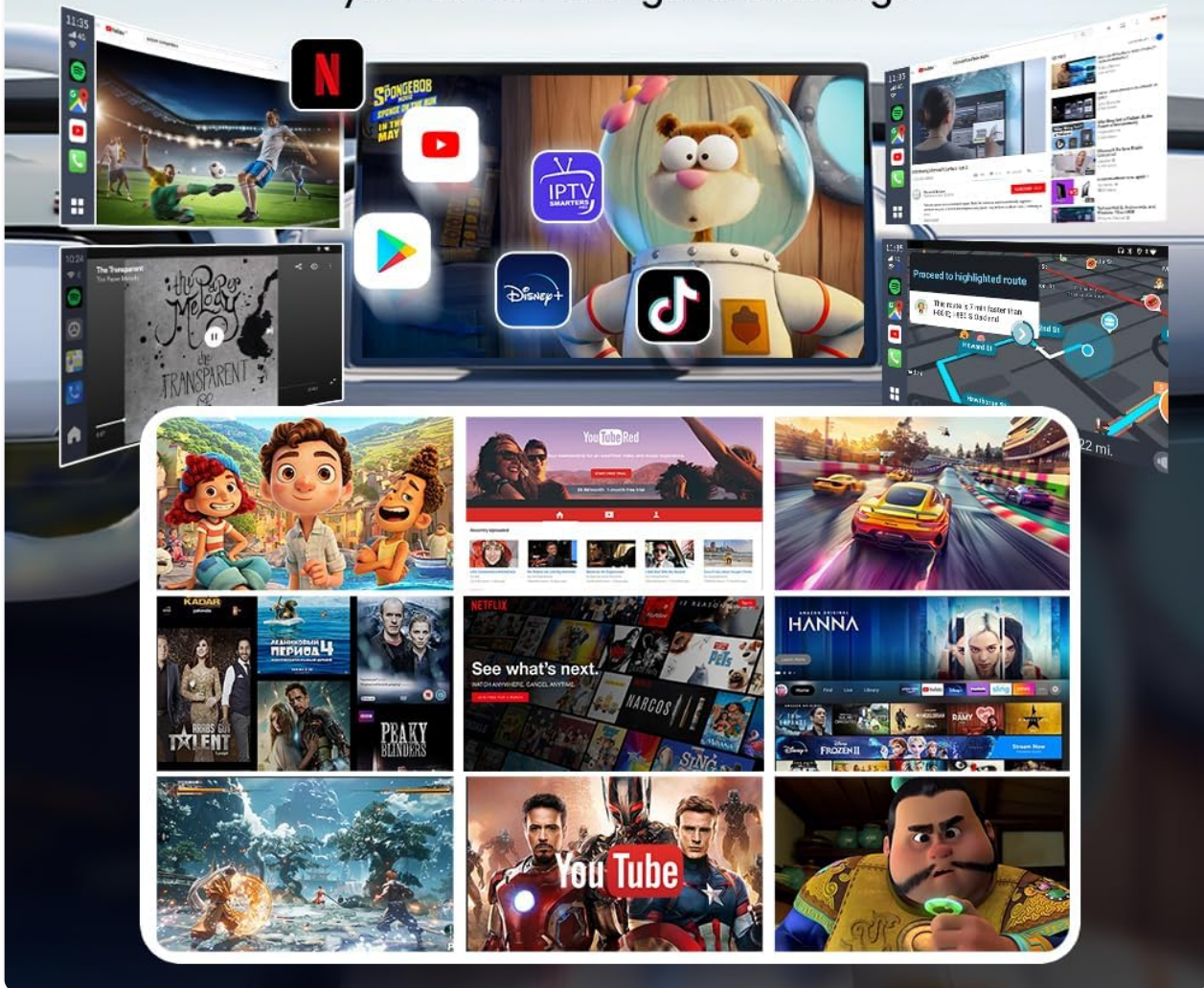


Image 3.1: A close-up view of the Carlinkit adapter's side, highlighting the Nano SIM card slot, Type-C port for connection, and Micro SD card slot for expandable storage.

More APPs for download

Supports downloading a large number of APPs from the system's own App Store



Image 3.2: A hand demonstrating the connection of the Carlinkit adapter to a car's USB port, illustrating the simple plug-and-play setup.

Setup Demonstration Video:

Your browser does not support the video tag.

Video 3.1: This video provides a visual guide to the initial setup and seamless expansion of your car's system with the Carlinkit adapter, demonstrating the connection process and the immediate display of the Android 13.0 interface.

4. OPERATING INSTRUCTIONS

4.1 Wireless CarPlay and Android Auto

Once paired, your phone will automatically connect to the Carlinkit adapter when you start your vehicle. You can then access CarPlay or Android Auto wirelessly on your car's display, utilizing navigation, music, calls, and messaging features.

4.2 Switching Operating Modes

To switch between CarPlay and Android Auto modes, locate the small pinhole button on the side of the adapter. Insert an ejection pin (not included, typically found with SIM card trays) and press for approximately 2-

3 seconds. The device will then switch to the alternative mode.

4.3 Application Usage

The Android 13.0 system allows you to download and install a wide range of applications from the integrated app store. Navigate the interface using your car's touchscreen or original control methods (e.g., rotary knob, steering wheel controls).

- **Navigation:** Utilize various GPS applications for real-time navigation.
- **Multimedia:** Stream videos from Netflix, YouTube, TikTok, and other platforms.
- **Voice Control:** Use voice commands with Siri (for CarPlay) or Google Assistant (for Android Auto and Android system) for hands-free operation.



Image 4.1: A car's infotainment screen showcasing both Wireless CarPlay and Wireless Android Auto interfaces, demonstrating the seamless integration of smartphone functionalities.



Image 4.2: An illustration detailing the method to switch between CarPlay and Android Auto operating modes using the adapter's physical button.

5. MEDIA INTEGRATION

The Carlinkit adapter transforms your car's display into a comprehensive entertainment hub, allowing you to enjoy various media content directly on your car screen.

5.1 Streaming Services

Access pre-installed applications like Netflix, YouTube, and TikTok. You can also download other streaming services from the app store to enjoy movies, TV shows, and short-form videos.



Image 5.1: The car screen interface showing built-in YouTube and Netflix applications, demonstrating the ability to watch videos directly.

5.2 App Store Access

The device provides access to an app store, enabling you to download and install additional applications, expanding your entertainment and utility options infinitely. This includes navigation apps, music players, and other productivity tools.

APPLICABLE MODELS

For Cars with OEM wired CarPlay
or OEM wired Android Auto

Touchscreen 

600+ cars



Switching operating modes:
insert the Ejection Pin and press for about 2-3s.
Switch carPlay (default) or Android Auto mode to work.

Image 5.2: The Carlinkit adapter surrounded by icons of various downloadable applications, illustrating the extensive app support.

Android 13.0 Features Demonstration:

Your browser does not support the video tag.

Video 5.3: This video demonstrates the capabilities of the Carlinkit Ai Box with Android 13.0, showcasing various applications and features available on the car's display.

6. COMPATIBILITY

The Carlinkit Wireless CarPlay Adapter is designed for broad compatibility with vehicles equipped with factory-installed wired CarPlay or wired Android Auto systems that feature a touchscreen display.

- **Vehicle Compatibility:** Supports over 600 car models with OEM wired CarPlay or wired Android Auto.
- **Phone Compatibility:**
 - For Wireless CarPlay: iPhone 6 and above (iOS 10.0 and up).
 - For Wireless Android Auto: Android phones with Android 11.0 and above.

CarlinKit Tbox S1



Image 6.1: An overview of the Carlinkit adapter's universal compatibility, featuring various car models and detailing phone requirements for both Wireless CarPlay and Wireless Android Auto.

7. TROUBLESHOOTING

If you encounter issues with your Carlinkit Wireless CarPlay Adapter, please refer to the following common solutions:

- **No Connection:** Ensure the USB cable is securely connected to both the adapter and the car's USB port. Try a different USB port if available. Verify your car's wired CarPlay/Android Auto system is functioning correctly without the adapter.
- **Bluetooth/Wi-Fi Pairing Issues:** Make sure Bluetooth and Wi-Fi are enabled on your phone. Forget the device from your phone's Bluetooth settings and attempt to pair again.
- **Slow Performance:** Close unnecessary applications running in the background. Ensure the device's firmware is up to date (check for online updates in the system settings).
- **No Audio:** Check your car's audio input settings to ensure the correct source (e.g., USB Audio) is selected. Adjust volume levels on both the car and the adapter.
- **System Freeze/Crash:** Disconnect the adapter from the car's USB port, wait a few seconds, and then

reconnect it to restart the device.

If problems persist, please contact customer support for further assistance.

After-Sales Contact Information:

Your browser does not support the video tag.

Video 7.1: This video provides information on how to contact Carlinkit for after-sales support and assistance with your product.

8. SPECIFICATIONS

Feature	Specification
Model Number	CPC200-Tbox
Operating System	Android 13.0
Processor	Qualcomm SM6115 Quad-core
GPU	Adreno 610
RAM	4GB
Internal Storage (ROM)	64GB
Connectivity	2.4GHz + 5.8GHz WiFi, Bluetooth 2.1+EDR/3.0/4.1/4.2 BLE/5.0 LE
Voice Command	Microphone, Touchscreen
Map Type	Worldwide
Item Weight	5.6 ounces
Package Dimensions	6.46 x 5.51 x 2.09 inches

9. WARRANTY AND SUPPORT



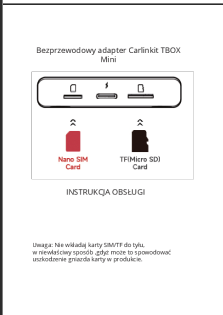


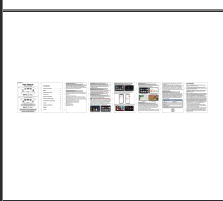
9.1 Warranty Information

The Carlinkit Wireless CarPlay Adapter comes with a **1-year warranty** from the date of purchase. This warranty covers manufacturing defects and malfunctions under normal use. Please retain your proof of purchase for warranty claims.

9.2 Customer Support

For technical assistance, troubleshooting, or warranty inquiries, please contact Carlinkit customer support. You can typically find contact information on the official Carlinkit website or through the seller's page where you purchased the product.

Related Documents - CPC200-Tbox

	<p>Carlinkit CPC200-Tbox Ai Box CarPlay: Wireless Adapter & Media Box User Guide</p> <p>Comprehensive user guide for the Carlinkit CPC200-Tbox Ai Box CarPlay, detailing its features as a wireless CarPlay/Android Auto adapter and media streaming box. Includes system specifications, product details, compatibility, and certifications.</p>
	<p>Carlinkit TBOX-Plus 4+64GB: Bezprzewodowy Adapter CarPlay i Android Auto - Instrukcja Obsługi</p> <p>Szczegółowa instrukcja obsługi bezprzewodowego adaptera Carlinkit TBOX-Plus 4+64GB. Dowiedz się, jak zainstalować, połączyć i korzystać z funkcji CarPlay i Android Auto w swoim samochodzie, specyfikacje, FAQ i środki bezpieczeństwa.</p>
	<p>Carlinkit TBOX Mini: Bezprzewodowy Adapter CarPlay i Android Auto - Instrukcja Obsługi</p> <p>Szczegółowa instrukcja obsługi bezprzewodowego adaptera Carlinkit TBOX Mini. Dowiedz się o instalacji, kompatybilności, funkcjach, rozwiązywaniu problemów i specyfikacjach technicznych dla samochodów z CarPlay i Android Auto.</p>
	<p>Carlinkit TBOX-Plus 4+64GB Wireless Adapter User Manual</p> <p>User manual for the Carlinkit TBOX-Plus 4+64GB wireless adapter, enabling Android platform features, CarPlay, and Android Auto in your vehicle. Includes specifications, setup, troubleshooting, and safety information.</p>
	<p>Carlinkit CPC200-Tbox Ai Box CarPlay User Manual and Specifications</p> <p>Comprehensive guide to the Carlinkit CPC200-Tbox Ai Box, a wireless CarPlay and Android Auto adapter. Details features, technical specifications, compatibility, and certifications.</p>
	<p>Carlinkit S2408-01 Android AI Box: User Manual for Wireless CarPlay & Android Auto</p> <p>Comprehensive user manual for the Carlinkit S2408-01 Android AI Box, detailing features like Wireless CarPlay, Wireless Android Auto, 4G connectivity, GPS, Bluetooth, and app installation. Includes specifications, setup instructions, FAQs, warranty information, and FCC compliance.</p>