

Gisotu T1

Gisotu T1 Magnetic Selfie Monitor Screen User Manual

Model: T1

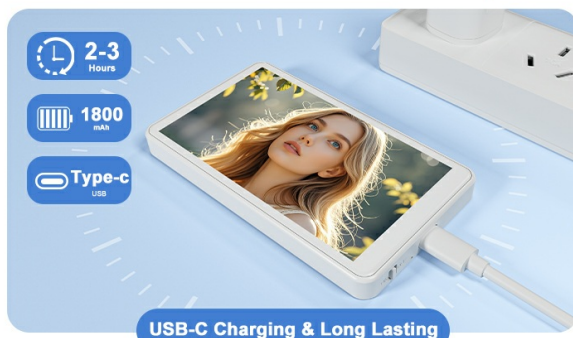
INTRODUCTION

This manual provides detailed instructions for setting up, operating, and maintaining your Gisotu T1 Magnetic Selfie Monitor Screen. Please read this manual thoroughly before use to ensure optimal performance and safety.

WHAT'S IN THE BOX

- Vlog Selfie Monitor Screen (x1)
- Bluetooth Remote Control (x1)
- Magnetic Ring (x1)
- User Manual (x1)
- USB A to Type-C cable (x1)

The No-Speaker Selfie Partner



Provides 2-3 hours of use (1800mAh), perfect for capturing adventures like hiking or street photography.



No extra apps! Just connect through your device's built-in screen mirroring feature.

Image: The Gisotu T1 Magnetic Selfie Monitor Screen package contents, showing the monitor, Bluetooth remote, magnetic ring, user manual, and USB-C charging cable.

SETUP

1. Powering On and Charging

Before first use, ensure the device is fully charged using the provided USB A to Type-C cable. The charging port is located on the side of the monitor. To power on, slide the power switch to the "ON" position.



Image: A detailed view of the Gisotu T1 monitor's side, highlighting the power switch, Type-C charging port, and indicator light.

2. Attaching the Monitor to Your Phone

The Gisotu T1 features a powerful magnetic grip for secure attachment. For iPhone 12-16 models, the monitor attaches directly. If using an iPhone case, remove it for the most stable connection. For other smartphones, use the included magnetic sheet by peeling off its adhesive backing and securely applying it to your device.

See Yourself In Real-time While Using Rear Camera

Magnetic Attachment Selfie Display Screen



Wireless
Screen Mirroring

Compatible with 99% of Smartphones

Image: A hand demonstrating the magnetic attachment of the Gisotu T1 monitor to the back of an iPhone.



Image: Illustration of how the magnetic selfie monitor attaches to iPhones and how to use the magnetic ring for other smartphone models.

3. Connecting to Your Phone (Screen Mirroring)

The monitor connects wirelessly via screen mirroring, requiring no additional apps.

For iPhone Devices:

1. Swipe down from the top-right corner of your iPhone screen to open the Control Center.
2. Tap the "Screen Mirroring" icon.
3. In the list of available devices, find and select "Gisotu_p2p".
4. For the first connection, you will be prompted to enter a verification code. The default code is "1234".

Your browser does not support the video tag.

Video: Demonstrates the screen mirroring connection process for iPhone devices, including swiping down for Control Center, selecting "Screen Mirroring", choosing "Gisotu_p2p", and entering the verification code.

For Android Devices:

1. Swipe down from the top menu on your Android phone to access the "Casting Function" (this may be labeled as "Wireless Projection", "Smart View", or similar depending on your phone model).
2. Find and select "Gisotu_p2p" in the list of search devices.
3. The first connection may require a verification code "1234".

Your browser does not support the video tag.

Video: Illustrates the screen mirroring connection process for Android devices, showing how to access the casting function and connect to "Gisotu_p2p".

4. Connecting the Bluetooth Remote Control

The included Bluetooth remote allows for hands-free photo and video capture.

1. Turn on the Bluetooth remote control.
2. On your smartphone, go to Bluetooth settings.
3. Find and pair with "AB Shutter3".

Your browser does not support the video tag.

Video: Shows how to pair the Bluetooth remote control ("AB Shutter3") with a smartphone for remote photo and video capture.

OPERATING INSTRUCTIONS

1. Real-time Screen Display

Once connected, the Gisotu T1 monitor will instantly mirror your phone's screen, allowing you to see yourself clearly when using your phone's rear camera for vlogging, live streaming, or taking selfies.

Your browser does not support the video tag.

Video: A short demonstration of the Gisotu T1 monitor displaying a smartphone's rear camera view in real-time, enabling users to frame themselves for selfies or vlogs.

Professional-Grade Selfies with Rear Camera

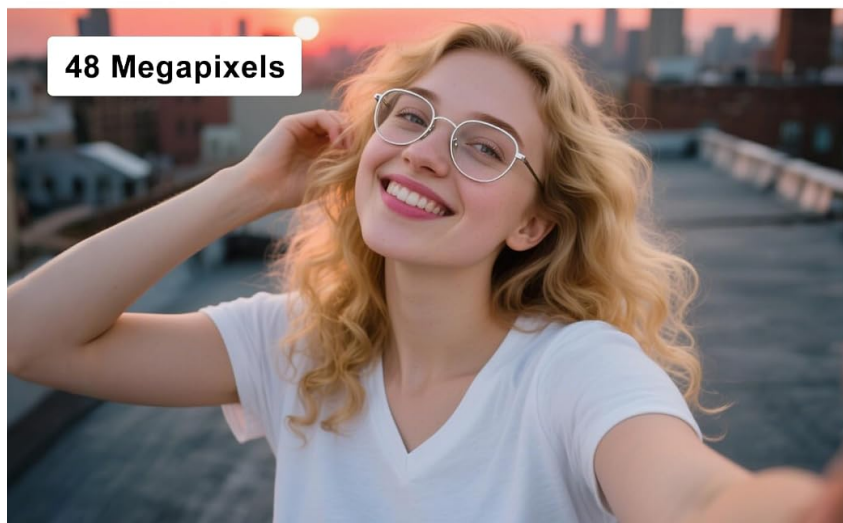
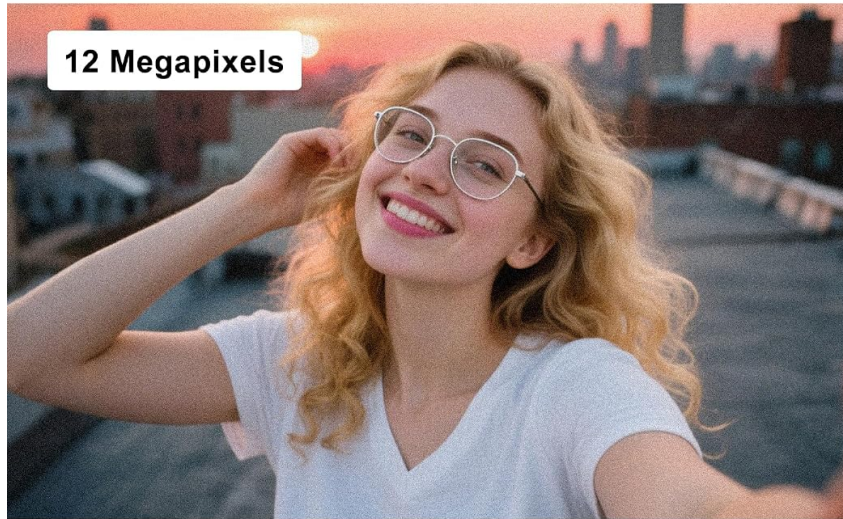
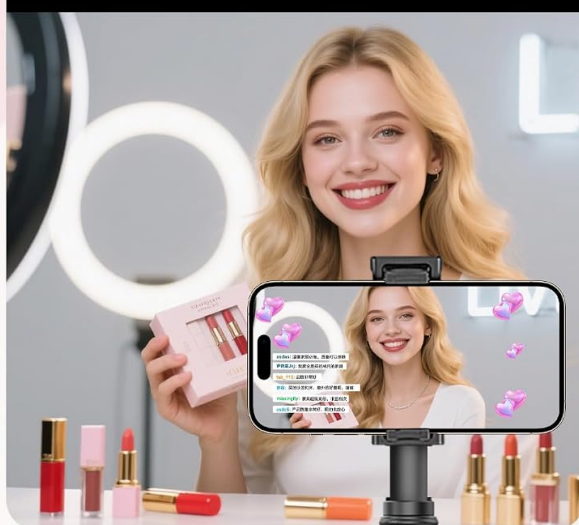


Image: A user utilizing the Gisotu T1 monitor to frame herself while recording with the rear camera of her smartphone.

SUPPORTS VLOG SELFIE VIDEO RECORDING



Audience view



Anchor's point of view



Image: Demonstrates the improved image quality when using the phone's rear camera with the Gimto T1 monitor compared to the front camera.

2. Screen Rotation

The monitor supports 180° rotation and one-touch portrait/landscape switching. Use the dedicated screen rotation button on the side of the monitor to adjust the orientation as needed.

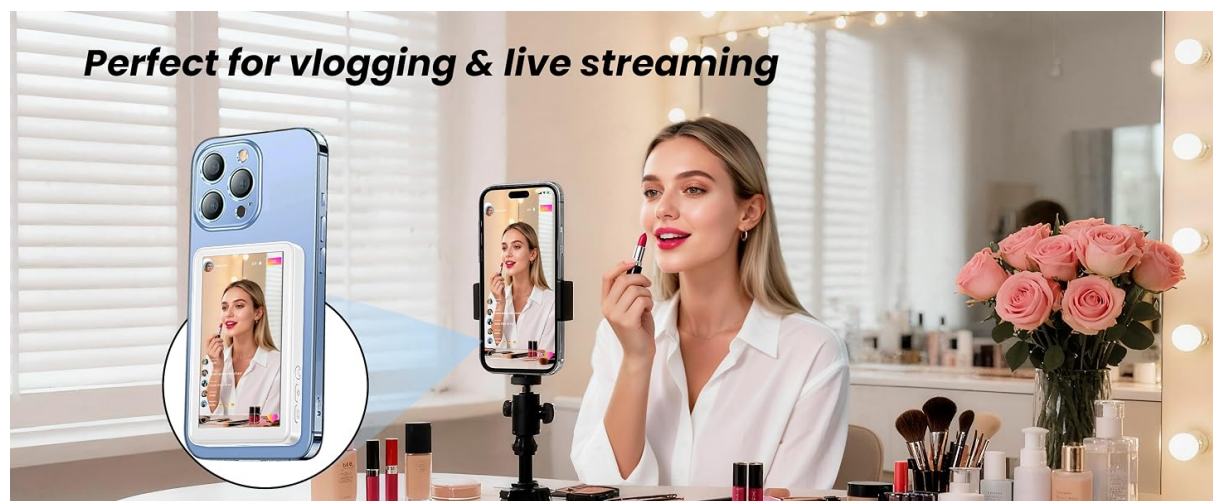


Image: The Gimto T1 monitor demonstrating its 180-degree rotation capability for flexible viewing angles.

Your browser does not support the video tag.

Video: Shows the screen rotation feature of the Gisotu T1 monitor, allowing users to switch between portrait and landscape views.

3. Brightness Adjustment

The monitor offers three levels of brightness adjustment (low/medium/high) to ensure optimal visibility in various lighting conditions. Use the brightness adjustment button on the side of the monitor to cycle through the levels.



Image: Illustrates the three adjustable brightness levels (low, medium, high) of the Gisotu T1 monitor for different environments.

Your browser does not support the video tag.

Video: Demonstrates how to adjust the brightness of the Gisotu T1 monitor using the dedicated button.

4. Using the Bluetooth Remote

After pairing the Bluetooth remote, you can use it to remotely trigger your phone's camera for photos or start/stop video recording. This is ideal for group photos, vlogging, or any situation where you need to operate your camera from a distance.



Image: A user holding a smartphone with the Gisotu T1 monitor attached, demonstrating the use of the Bluetooth remote control.

MAINTENANCE

- **Cleaning:** Use a soft, dry cloth to clean the screen and body of the monitor. Avoid using harsh

chemicals or abrasive materials.

- **Storage:** Store the monitor in a cool, dry place away from direct sunlight and extreme temperatures.
- **Battery Care:** To prolong battery life, avoid fully discharging the battery frequently. Charge the device regularly, even if not in use for extended periods.

TROUBLESHOOTING

- **Monitor not connecting to phone:**

- Ensure the monitor is powered on and has sufficient battery.
- Verify Wi-Fi is enabled on your iPhone for connection.
- If "Gisotu_p2p" does not appear in your phone's device list, restart the Selfie Screen and search again.
- Confirm you have entered the correct verification code (default is "1234") for the first connection.

- **Incompatibility:**

- The Selfie Monitor Screen is **not compatible** with iPhone 17 and Google Pixel devices.

- **No sound or photography function:**

- This device is a sharing screen only. It does not have built-in sound recording or photography capabilities. These functions are handled by your connected smartphone.

- **4K video recording lag on iPhone:**

- The iPhone native camera may not support 4K video recording without lag when screen mirroring. For 4K recording, it is recommended to download and use third-party camera apps like Blackmagic Camera.
- 4K 60fps recording is supported for Samsung Galaxy devices.

- **Magnetic attachment not stable:**

- If using an iPhone case, remove it for the most stable magnetic connection.
- Ensure the magnetic ring (for non-MagSafe phones) is securely attached and properly aligned.

SPECIFICATIONS

Product Dimensions	0.43 x 2.36 x 4.13 inches
Item Weight	5 ounces
Item Model Number	T1
Batteries	1 Lithium Polymer batteries required (included)
Wireless Communication Technologies	Bluetooth, Wi-Fi
Connectivity Technologies	Bluetooth
Color	White
Manufacturer	Gisotu

First Available Date	July 10, 2025
-----------------------------	---------------

WARRANTY AND SUPPORT

For warranty information and customer support, please refer to the contact details provided by Gisotu at the point of purchase or visit the official Gisotu website. Keep your purchase receipt as proof of purchase for any warranty claims.

Visit the [Gisotu Store](#) for more products and support.