



[Manuals.plus](#) /

> [Aoxun](#) /

> Aoxun 12' x 20' Hardtop Gazebo Instruction Manual (Model G30052GR03)

Aoxun G30052GR03

Aoxun 12' x 20' Hardtop Gazebo Instruction Manual

Model: G30052GR03

INTRODUCTION

Thank you for choosing the Aoxun 12' x 20' Hardtop Gazebo. This manual provides essential information for the safe assembly, operation, and maintenance of your gazebo. Please read all instructions carefully before beginning assembly and retain this manual for future reference.

SAFETY INFORMATION

Important Safety Instructions:

- Always read and understand all instructions before assembly and use.
- Assembly requires at least two adults. Do not attempt to assemble alone.
- Ensure all parts are present and undamaged before starting assembly.
- Choose a level and stable surface for installation.
- Securely anchor the gazebo to the ground using appropriate methods, such as expansion bolts, to withstand wind. Refer to the 'Wind Resistance' section for details.
- Do not hang heavy objects on the gazebo frame or roof, exceeding the specified weight limits for hooks (44 lbs).
- In case of heavy snow accumulation, clear the roof promptly to prevent structural damage. The roof is designed to hold up to 7 inches of thick snow.
- In extreme weather conditions (e.g., strong winds, heavy storms), it is recommended to remove curtains and netting and, if possible, disassemble the gazebo to prevent damage.
- Keep children and pets away from the assembly area.

PACKAGE CONTENTS

Your Aoxun Hardtop Gazebo is delivered in multiple packages. Please verify all components against the included parts list diagram (typically found in a separate document or at the beginning of the assembly guide). Common components include:

- Aluminum Frame Components (posts, beams, connectors)

- Galvanized Steel Double Roof Panels
- Curtains (180 GSM Polyester)
- Netting (110 GSM Textilene Mesh)
- Hardware Kit (screws, bolts, washers, tools)

Product Size

acorn

 6 packages

12FT X 20FT

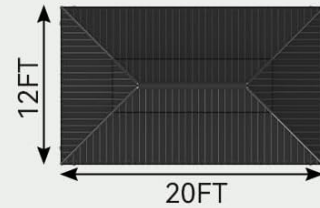
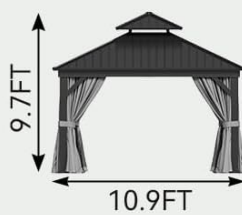
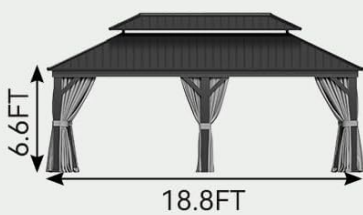
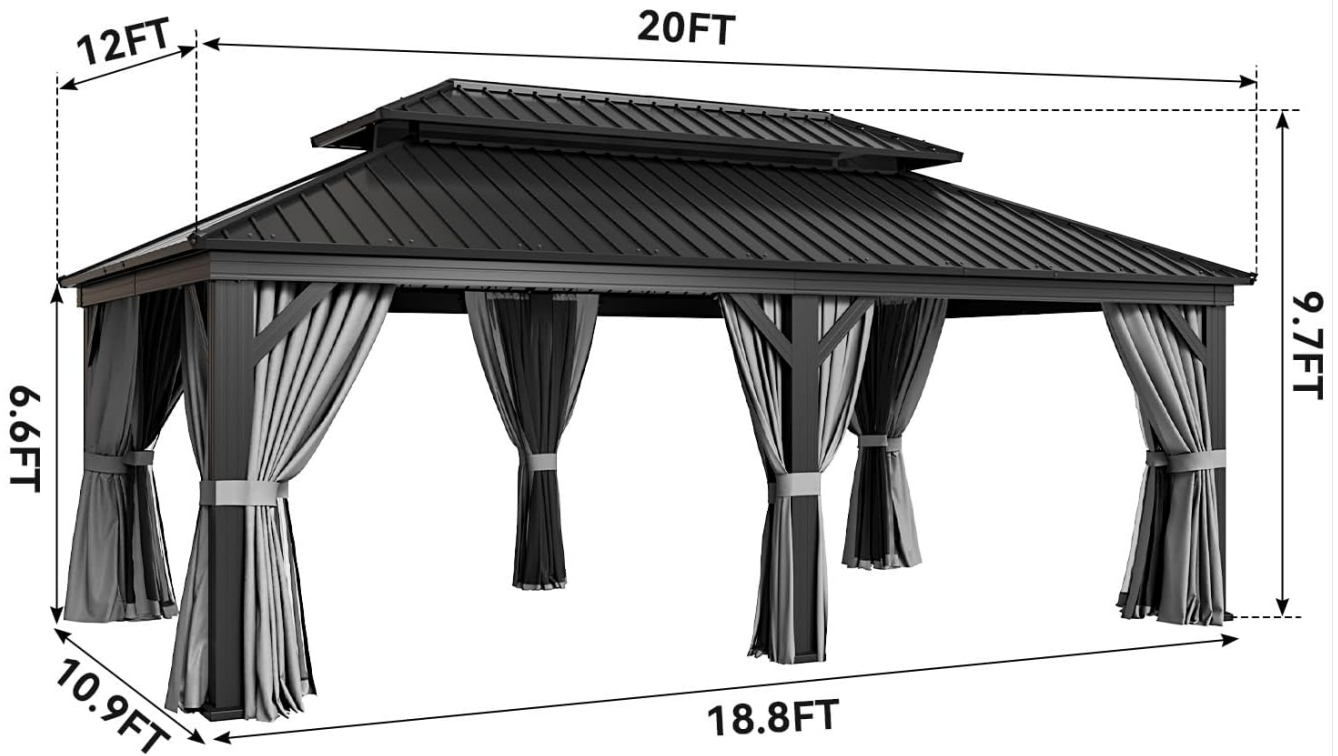


Figure 1: Product dimensions and package information. The gazebo measures 12 feet by 20 feet.



Figure 2: Illustration of the gazebo's construction materials, including thick powder coating, high-quality metal, and an aluminum frame for durability and wind resistance.

SETUP AND ASSEMBLY

Before You Begin:

- Select a clear, level area for assembly, free from overhead obstructions and underground utilities.
- Ensure you have all necessary tools, typically including a ladder, wrench, and screwdriver.

- Unpack all components and lay them out, verifying against the parts list.

Assembly Steps (General Overview):

1. **Assemble the Base Frame:** Connect the horizontal beams to the vertical posts according to the provided diagrams. Ensure all connections are secure but do not fully tighten bolts until the entire frame is assembled.
2. **Install Roof Supports:** Attach the roof support beams and central structure.
3. **Attach Roof Panels:** Carefully place and secure the galvanized steel roof panels. The double-roof design allows for airflow and UV protection.
4. **Install Curtains and Netting:** Hang the curtains and netting onto the designated tracks or rings.
5. **Final Tightening and Anchoring:** Once the entire structure is assembled, tighten all bolts. Securely anchor the gazebo to the ground.



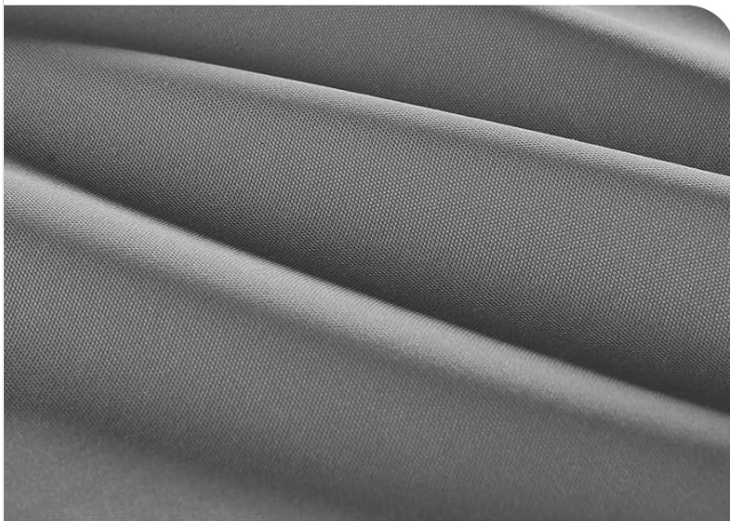
Figure 3: Wind resistance varies with installation. On the ground: 35-40 MPH. With anchoring stakes: 40-60 MPH. With expansion bolts: 55-70 MPH.

OPERATING INSTRUCTIONS

Curtains and Netting:

- The gazebo includes both privacy curtains and mesh netting. These can be used independently or together.
- To open or close, slide them along their respective tracks. Use the included ties to secure them to the posts when open.
- The mesh netting helps keep insects out while allowing airflow.

DETACHABLE CURTAINS



180/GSM POLYESTER CURTAIN



Waterproof



Tear-proof



Fade-proof

110/GSM TEXTILEN MESH



Mosquito-proof



Breathable

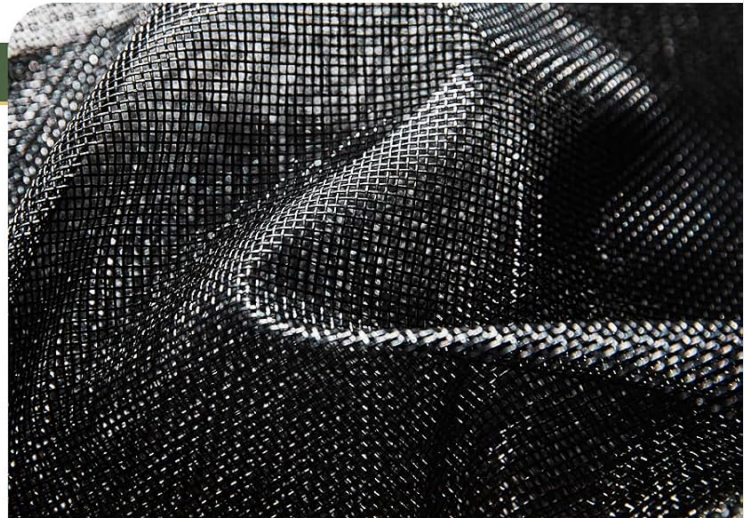


Figure 4: Details of the 180 GSM polyester curtains (waterproof, tear-proof, fade-proof) and 110 GSM Textilene mesh (mosquito-proof, breathable).

Drainage System:

- The integrated drainage system directs rainwater from the roof's edge into the posts and down to the ground.
- Ensure the drainage channels are clear of debris (leaves, dirt) to maintain efficient water runoff.

WATER GUTTER DESIGN

The professional drainage system efficiently directs water from the top's edge into the pole and the ground.



Figure 5: The professional drainage system efficiently directs water from the top's edge into the pole and the ground, preventing accumulation.

A composite image showing a gazebo in three different weather conditions. The left side shows the gazebo in the rain, with water falling around it. The middle side shows the gazebo covered in snow. The right side shows the gazebo in bright sunlight. Below the images are three circular icons: a sun with 'UV' inside, an umbrella, and a cloud with snowflakes. To the right of the images is the text 'ALL WEATHER USE' and a paragraph about its durability. At the bottom right are two more icons: a sun with 'UV' and an umbrella, with text describing their features.

ALL WEATHER USE

It can withstand various harsh weather conditions.

UV PROTECTION

WATERPROOF

SNOW RESISTANT

Anti-UV

holds up to 7"-thick snow

Figure 6: The superior slope design of the roof helps rainwater drain quickly and prevents accumulation, especially during snow melt.

Ceiling Hooks:

- The gazebo is equipped with heavy-duty hooks on the ceiling.
- Each hook can support up to 44 lbs (20 kg).
- These hooks are suitable for hanging lights, fans, or lightweight decorations. Do not exceed the weight limit.

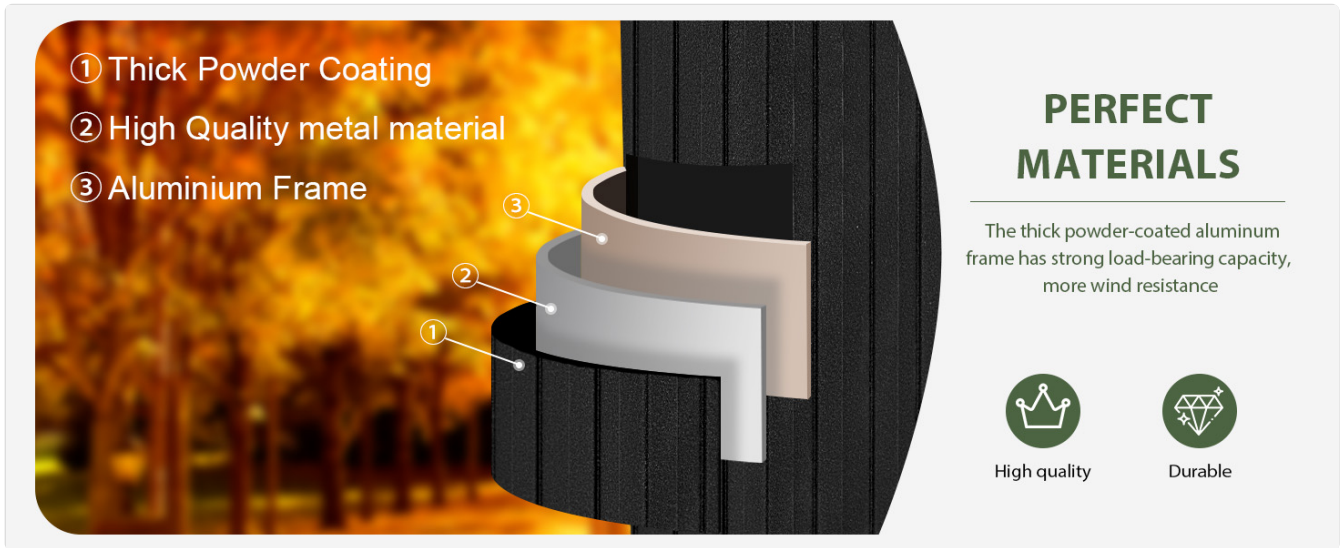


Figure 7: Ceiling hooks are provided for hanging fans, lights, or other decorative items, enhancing the gazebo's functionality.

MAINTENANCE

Regular maintenance will extend the life and appearance of your gazebo.

- **Cleaning the Frame:** Wipe the aluminum frame with a soft cloth and mild soap and water. Rinse thoroughly and dry to prevent water spots. Avoid abrasive cleaners.
- **Cleaning the Roof:** Periodically clean the galvanized steel roof panels to remove leaves, dirt, and other debris. Use a soft brush or cloth with water.
- **Cleaning Curtains and Netting:** The polyester curtains and Textilene mesh can be spot cleaned with mild soap and water. For deeper cleaning, they may be removed and hand washed. Ensure they are completely dry before re-installing or storing to prevent mildew.
- **Fastener Check:** Annually, or after severe weather, inspect all bolts and screws to ensure they are tight. Retighten as necessary.
- **Winter Care:** While the gazebo is designed for all-weather use and can hold up to 7 inches of snow, it is advisable to regularly clear heavy snow accumulation from the roof to prevent excessive stress on the structure.

TROUBLESHOOTING

Problem	Possible Cause	Solution
Water accumulation on roof	Drainage channels blocked; excessive rainfall.	Clear debris from drainage system. Ensure proper roof panel alignment.
Gazebo feels unstable or sways	Loose fasteners; inadequate anchoring; strong winds.	Check and tighten all bolts and screws. Ensure gazebo is properly anchored with expansion bolts. Remove curtains/netting in high winds.

Problem	Possible Cause	Solution
Curtains/Netting not sliding smoothly	Debris in tracks; damaged runners.	Clean tracks. Inspect runners for damage and replace if necessary.
Minor scratches or paint chips on frame	Normal wear and tear.	Touch up with appropriate outdoor-grade paint if desired.

If you encounter issues not listed here or require further assistance, please contact Aoxun customer support.

SPECIFICATIONS

- **Model:** G30052GR03
- **Dimensions (L x W x H):** 233" x 142" x 128" (approximately 19.4 ft x 11.8 ft x 10.7 ft)
- **Frame Material:** Aluminum, Metal with Thick Powder Coating
- **Roof Material:** Galvanized Steel Double Roof
- **Curtain Material:** 180 GSM Polyester
- **Netting Material:** 110 GSM Textilene Mesh
- **Color:** Gray
- **Item Weight:** 550 Pounds
- **Water Resistance Level:** Waterproof
- **Ultraviolet Light Protection:** Yes
- **Wind Resistance:** Up to 9 (47-54 mph) with expansion bolts
- **Snow Loading Depth:** Up to 7 inches thick snow
- **Assembly Required:** Yes

Wind Resistance Rating of Level 8



Figure 8: The gazebo is designed for all-weather use, offering 99% UV resistance in summer and capable of holding up to 7 inches of snow in winter.

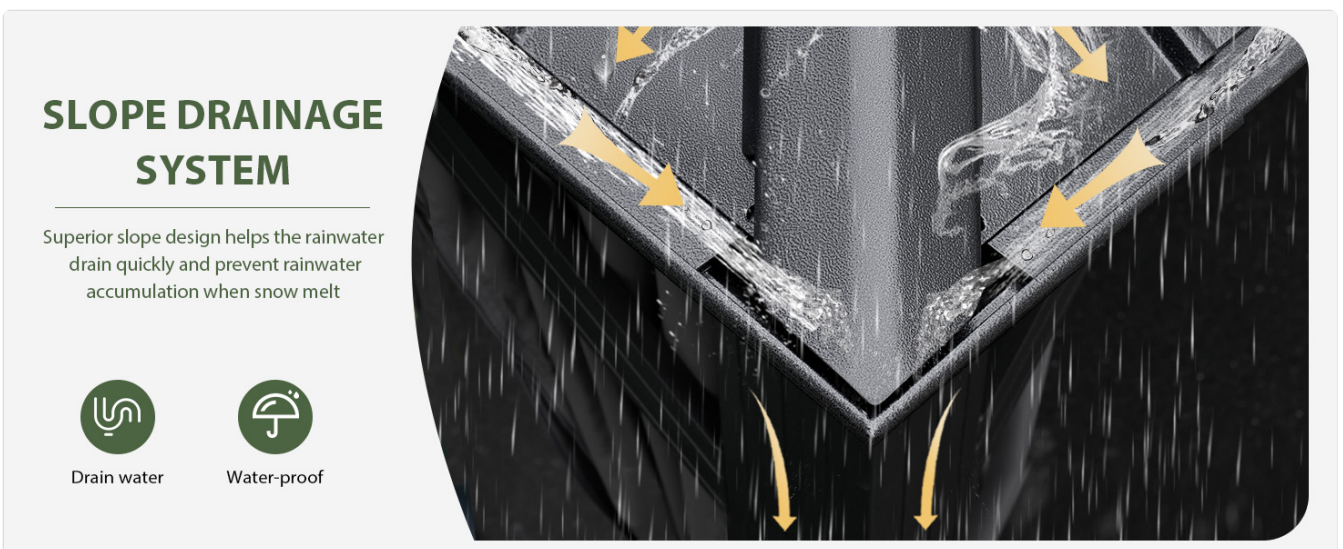


Figure 9: The hardtop double roof provides anti-UV protection, promotes air ventilation, and is waterproof.



Suitable For Multiple Occasions



Figure 10: The gazebo is built for all-weather use, featuring UV protection, waterproof materials, and snow resistance.

PRODUCT OVERVIEW VIDEO

Your browser does not support the video tag.

Video 1: An overview of the Aoxun Hardtop Gazebo, showcasing its features such as the rust-resistant aluminum frame, stable columns, double roof design for airflow and UV protection, efficient drainage system, and privacy curtains with netting. This video provides a visual guide to the gazebo's construction and functionality.

WARRANTY AND SUPPORT

For warranty information, please refer to the documentation included with your purchase or contact Aoxun customer support directly. If you have any questions, require replacement parts, or need assistance with assembly or troubleshooting, please reach out to the manufacturer's customer service department. Contact details are typically available on the product packaging or the official Aoxun website.