

manuals.plus /

› [rockspace](#) /

› [rockspace AC1200 Dual Band WiFi Extender Instruction Manual](#)

rockspace AC1200

rockspace AC1200 Dual Band WiFi Extender Instruction Manual

Model: AC1200

1. PRODUCT OVERVIEW

The rockspace AC1200 Dual Band WiFi Extender is designed to expand your existing wireless network coverage, eliminating dead zones and providing a stronger, more reliable internet connection throughout your home or office. It operates on both 2.4 GHz and 5 GHz frequency bands, offering combined speeds up to 733Mbps for various online activities.





Image 1.1: The rockspace AC1200 Dual Band WiFi Extender with its two external antennas and indicator lights.

Key Features:

- **Extended Coverage:** Provides 360° signal coverage, extending your WiFi network up to 1292 sq. ft.
- **Dual-Band Performance:** Supports both 2.4 GHz (for wider coverage) and 5 GHz (for faster speeds) bands, with a combined rate of up to 733Mbps.
- **Universal Compatibility:** Works with all standard 802.11n/g/b/ac routers and gateways.
- **Smart Signal Indicator:** Helps identify the optimal placement for the extender by displaying connection status with varied colors.
- **Easy Setup:** Features a one-press WPS button setup for quick connection to your router.

Extend and Boost Your Existing Wi-Fi Signal

Eliminate WiFi Dead Zone coverage up to 2640 sq ft

● Work With Any WiFi 5 Router

WiFi Range Extender

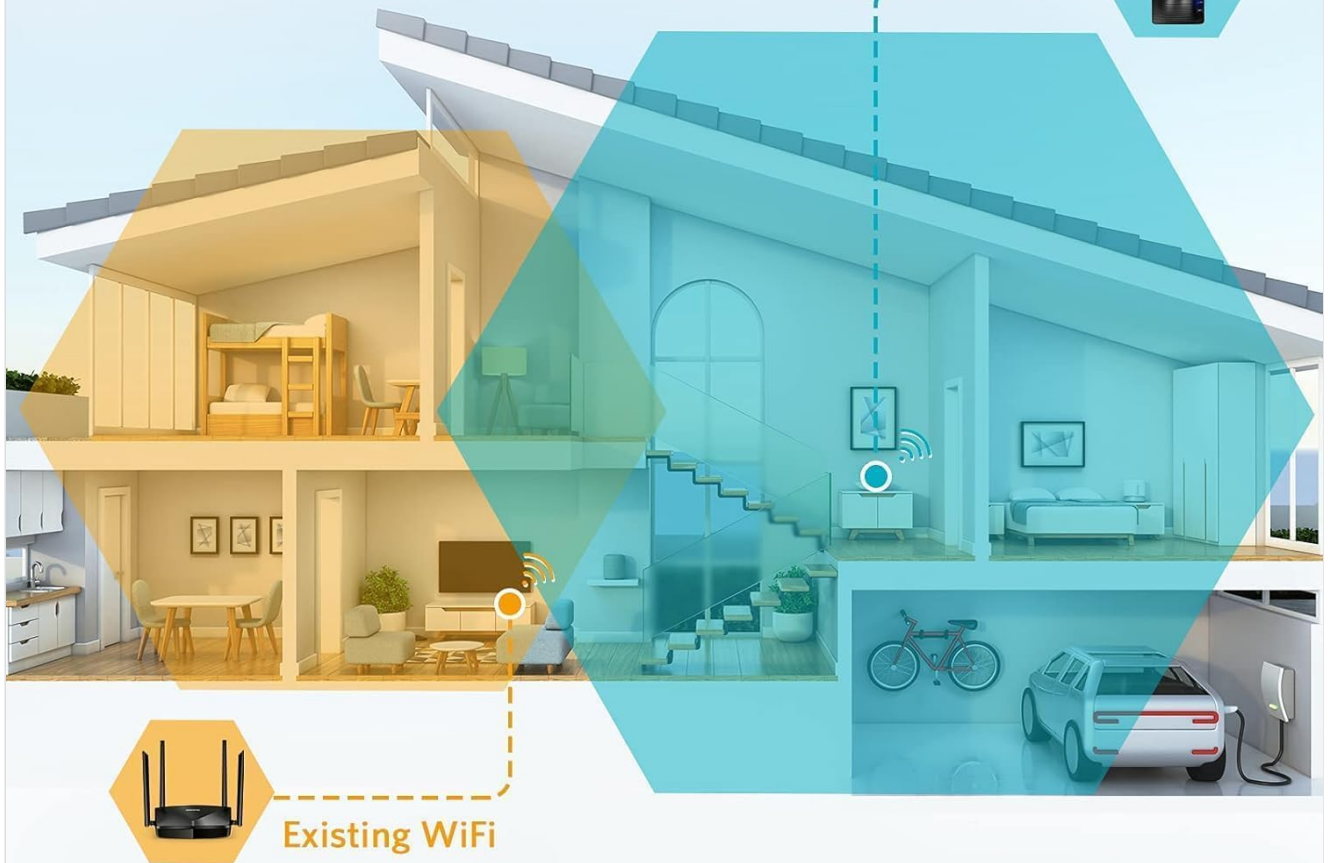


Image 1.2: Illustration showing how the WiFi extender expands coverage to eliminate dead zones in a multi-story home.

2. SETUP INSTRUCTIONS

There are two primary methods to set up your rockspace AC1200 WiFi Extender: using the WPS button or via a web browser.

2.1. WPS Button Setup (Recommended for quick setup)

The WPS (Wi-Fi Protected Setup) method allows for a quick and easy connection to your existing router.

1. **Power On:** Plug the WiFi extender into an electrical outlet near your main router. Wait for the Power (PWR) LED to turn solid blue.
2. **Activate WPS on Extender:** Press the WPS button on the side of the extender. The WPS LED will start blinking.
3. **Activate WPS on Router:** Within two minutes, press the WPS button on your main router. Refer to your router's manual if you cannot locate the WPS button.

4. **Connect:** Wait for the WPS LED on the extender to turn solid blue, indicating a successful connection. This may take a few moments.
5. **Relocate:** Once connected, unplug the extender and move it to a location halfway between your router and the WiFi dead zone. Plug it into an outlet and wait for the Signal LED to turn blue (indicating a good connection).



Image 2.1: Diagram illustrating the WPS setup process, showing pressing WPS buttons on both the router and the extender.

2.2. Web Browser Setup

If your router does not have a WPS button, or if the WPS method fails, you can set up the extender using a web browser.

1. **Power On:** Plug the WiFi extender into an electrical outlet near your main router. Wait for the Power (PWR) LED to turn solid blue.
2. **Connect to Extender's WiFi:** On your computer or smartphone, connect to the extender's default WiFi network (e.g., "rockspace_EXT" or similar, usually found on a label on the device). No password is required initially.

3. **Access Setup Page:** Open a web browser (e.g., Chrome, Firefox) and enter the default IP address or domain name (e.g., re.rockspace.local or 192.168.0.254) in the address bar.
4. **Follow On-Screen Instructions:** Create an administrator password, select your existing WiFi network, and enter its password. The extender will then connect to your router.
5. **Relocate:** Once setup is complete, unplug the extender and move it to an optimal location. Plug it back in and wait for the Signal LED to turn blue.

Easy Setup & Easy Control With Your Phone

3mins Setup via web based



Image 2.2: A smartphone screen showing connection to the extender's WiFi network for web-based setup.

3. OPERATING INSTRUCTIONS

3.1. Understanding Indicator Lights

- **Power (PWR) LED:** Solid blue indicates the extender is powered on.
- **WPS LED:** Blinking indicates WPS pairing mode. Solid blue indicates a successful WPS connection.
- **Signal LED:**

- **Solid Blue:** Good signal strength from the router.
- **Solid Red:** Weak signal strength from the router. Consider relocating the extender closer to the router.
- **Off:** No connection to the router.

3.2. Dual Band Operation

The AC1200 extender creates two extended networks, one for 2.4 GHz and one for 5 GHz. Devices connected to the 2.4 GHz network will generally have a wider range, while devices connected to the 5 GHz network will experience faster speeds, ideal for streaming and gaming.



Image 3.1: Illustration showing devices connected to 2.4GHz and 5GHz bands with their respective speed capabilities.

3.3. Wired Connection

The extender may include an Ethernet port, allowing you to connect a wired device (like a desktop computer, gaming console, or smart TV) to the extended network for a stable, high-speed connection.

4. MAINTENANCE

Proper maintenance ensures the longevity and optimal performance of your WiFi extender.

- **Cleaning:** Gently wipe the device with a dry, soft cloth. Avoid using liquid cleaners or aerosols.
- **Ventilation:** Ensure the extender is placed in a location with adequate airflow to prevent overheating. Do not cover ventilation holes.
- **Environment:** Avoid placing the extender in direct sunlight, near heat sources, or in areas with high humidity.
- **Firmware Updates:** Periodically check the rockspace official website for firmware updates. Updating firmware can improve performance, add new features, and fix bugs.

5. TROUBLESHOOTING

If you encounter issues with your WiFi extender, try the following troubleshooting steps:

5.1. No Internet Connection or Weak Signal

- **Check Placement:** Relocate the extender closer to your main router. The Signal LED should be solid blue.
- **Verify Router Connection:** Ensure your main router is working correctly and providing internet access.
- **Re-setup:** Try performing the setup process again, either via WPS or web browser.
- **Interference:** Move the extender away from large metal objects, microwaves, cordless phones, or other devices that might cause interference.

5.2. Slow Speeds

- **Optimal Placement:** Ensure the extender is placed in an optimal location (Signal LED solid blue).
- **Band Selection:** For speed-intensive tasks, try connecting your device to the 5 GHz extended network if available.
- **Network Congestion:** Too many devices on your network or heavy internet usage can slow down speeds.

5.3. WPS Setup Fails

- **Timing:** Ensure you press the WPS button on both the extender and router within the two-minute window.
- **Router WPS:** Some routers require WPS to be enabled in their settings. Check your router's manual.
- **Alternative Setup:** Use the web browser setup method if WPS continues to fail.

5.4. Forgot Administrator Password or Network Name/Password

- **Factory Reset:** Locate the reset button (usually a small pinhole) on the extender. With the extender powered on, use a paperclip to press and hold the reset button for about 8-10 seconds until the LEDs flash. The extender will revert to factory default settings, and you will need to set it up again.

6. SPECIFICATIONS

Feature	Specification
Model	AC1200
Wireless Standard	IEEE 802.11ac/n/g/b

Frequency Bands	2.4 GHz & 5 GHz
Combined Speed	Up to 733 Mbps (300 Mbps for 2.4 GHz, 433 Mbps for 5 GHz)
Antennas	Dual External Antennas
Ethernet Port	1 x 10/100 Mbps
Security	WPA-PSK/WPA2-PSK
Dimensions	4.8 x 3.86 x 3.43 inches
Weight	9.4 ounces

7. WARRANTY INFORMATION

rockspace products typically come with a limited warranty. For detailed warranty terms and conditions, please refer to the warranty card included with your product or visit the official rockspace website. Keep your purchase receipt as proof of purchase for warranty claims.



8. CUSTOMER SUPPORT

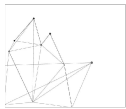

If you require further assistance or have questions not covered in this manual, please contact rockspace customer support through their official website or the contact information provided with your product packaging.

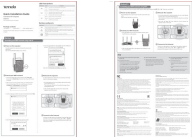


© 2025 rockspace. All rights reserved.

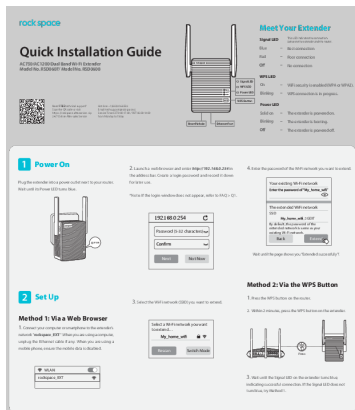
Related Documents - AC1200

	<p>Wavlink WiFi Range Extender Troubleshooting Guide</p> <p>A comprehensive troubleshooting guide for Wavlink WiFi Range Extenders, covering common issues like device overheating, weak security warnings, and signal repetition problems. Provides step-by-step solutions and configuration advice.</p>
	<p>BrosTrend Dual Band WiFi Extender E1 Quick Installation Guide</p> <p>A quick installation guide for the BrosTrend Dual Band WiFi Extender, Model E1, providing step-by-step instructions for setup via Web UI and WPS button, along with LED descriptions.</p>

<div data-bbox="140 136 290 163" data-label="Section-Header"><p>Dual Band Wireless Repeater</p></div> <div data-bbox="172 179 252 197" data-label="Text"><p>User Instructions</p></div> <div data-bbox="124 232 250 340" data-label="Image"></div>	<div data-bbox="339 147 1193 179" data-label="Section-Header"><p>Zaolan AC1200 Dual Band Wireless Repeater User Manual & Setup Guide</p></div> <div data-bbox="339 188 1412 297" data-label="Text"><p>This user manual provides comprehensive instructions for setting up and operating the Zaolan AC1200 Dual Band Wireless Repeater. It covers product parameters, configuration steps for Repeater and AP modes, frequently asked questions, and warranty terms.</p></div>
<div data-bbox="119 423 308 504" data-label="Image"></div>	<div data-bbox="339 396 999 425" data-label="Section-Header"><p>Wavlink AC1200 Outdoor Access Point Quick Start Guide</p></div> <div data-bbox="339 434 1476 544" data-label="Text"><p>A quick start guide for the Wavlink AC1200 Dual Band High-Power Outdoor Access Point, covering hardware overview, installation, configuration modes (AP, Repeater, Mesh Router, Mesh Extender), firmware upgrades, and FAQs.</p></div>
	<div data-bbox="339 1630 1085 1662" data-label="Section-Header"><p>WONLINK WiFi Extender AC1200 User Manual and Setup Guide</p></div> <div data-bbox="339 1671 1423 1740" data-label="Text"><p>Comprehensive guide for setting up and using the WONLINK WiFi Extender AC1200, including features, modes, and troubleshooting.</p></div>

	<p>Tenda A18/A15 Dual Band WiFi Repeater Quick Installation Guide</p> <p>Learn how to set up and extend your WiFi network with the Tenda A18 and A15 Dual Band WiFi Repeaters using this quick installation guide. Covers setup via Web UI and WPS, LED descriptions, button functions, and troubleshooting.</p>

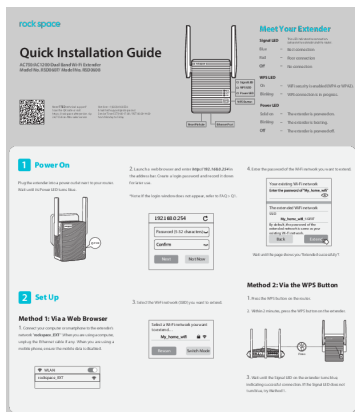
Documents - rockspace – AC1200



[Quick Installation Guide: rockspace AC750/AC1200 Dual Band Wi-Fi Extender](#)

Step-by-step guide to setting up your rockspace AC750/AC1200 Dual Band Wi-Fi Extender (Model RSD0607/RSD0608) for enhanced wireless coverage. Includes setup methods, relocation tips, and troubleshooting.

lang:en score:35 filesize: 1.48 M page_count: 2 document date: 2021-05-27



[\[pdf\] Installation Guide Frequently Asked Questions Guide](#)

rockspace-AC750 AC1200 WiFi - 20210520a user Quick Installation Guide Blue Best connection

Red Poor Quick< b> Guide< AC750 AC1200 Dual Band Wi-Fi Extender Model No RSD0607 RSD0608

Plug the extender into a power outlet next to your router Wait until its Power LED turns blue Hot-line:

1(833)816-6558 Email: techsupport@rockspace cc Service Time: EST 9:00-17:00 PDT 06:00-14:00 from

Monday Friday Need FREE technical A1ihk47fYL m media-amazon images I

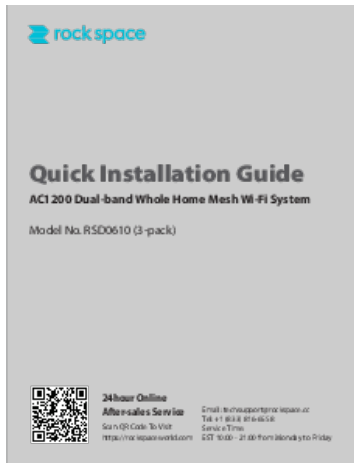
Quick Installation Guide AC750/**AC1200** Dual Band Wi-Fi Extender Model No.

RSD0607/ Model No. RSD0608 Need FREE technical support Scan the QR code or

visit <https://rockspace.afterservice.vip> 24/7 Online After-sales Service Hot-line: 1

833 816-6558 Email: techsupport@rockspace.cc Service Time: E...

lang:en score:35 filesize: 1.45 M page_count: 2 document date: 2021-05-20



[pdf] Installation Guide Guide

Mesh Wi Fi 20210911 Quick Installation Guide AC1200 Dual Band System rockspace RSD0610

20220216 v 1644998093 cdn shopify s files 1 0589 7253 7013 |||

Quick Installation Guide **AC1200** Dual-band Whole Home Mesh Wi-Fi System Model No. RSD0610 3-pack 24hour Online After-sales Service Scan QR Code To Visit

https://rockspaceworld.com Email: techsupport@rockspace.cc Tel: 1 833 816-6558

Service Time: EST 10:00 - 21:00 from Monday to Friday In the...

lang:en score:34 filesize: 5.01 M page_count: 14 document date: 2022-02-15

[pdf] User Manual Instructions Guide Label

denny AC1200 Smart Router User Manual 1 Product Overview Guide Configure the network parameters

The IP address is 192 168 xxx range from 2 to 254 Subnet Mask 255 0 and Gateway s default Obtain an automatically Set up TCP Protocol in mode on your PC Note The SSID Network Key product label bottom

5 4 Connexion successful 6 Changing Password Setup Now we recommend that you change password

protect security of Name type name use login web interface router Thank very much for purchasing

rockspace This guide will introduce features tell how connect 10 giu 2020 — configure access Internet

Introduction RSD0611 using Realtek chip program Taiwan 4GHz band wireless rate 300Mbps 5GHz a

new generation 11AC AC1200router C1MF66wOYZS cc pub m media amazon images I

AC1200 Smart Router User Manual Thank you very much for purchasing rockspace

AC1200 Smart Router. This guide will introduce the features of the router and tell you

how to connect, use and configure the router to access Internet. Please follow the

instructions in this guide to avoid affecting the rou...

lang:en score:30 filesize: 4.14 M page_count: 34 document date: 2020-03-10

[pdf] Quick Start Guide Guide

AC750 1200 Wifi Quick Start Guide Power LED Blinking The extender is booting Method 2:

Connect to an Existing WiFi Network with WPS< b> You can use 2 if your router has a button (possible icons of button: or) Otherwise 1 Place the Extender and Apply in same room AC750-1200 Wifi rockspace

cc pub download AC750 AC1200 User RockSpace After connection with client device established setup

page will automatically pop up If doesn't WPS a us Dual Band Repeater Model: RSD0607 RSD0608

Technical Phone Support: 1(833)816-6558 Service Time: EST: 9:00-17:00 PDT: 06:00-14:00 from PDF

Monday Friday 24hour

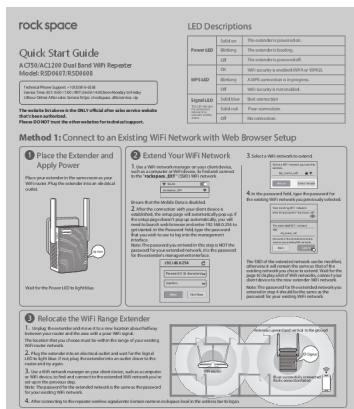
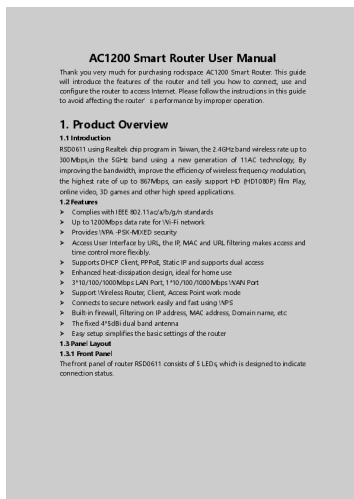
Quick Start Guide AC750/**AC1200** Dual Band WiFi Repeater Model:

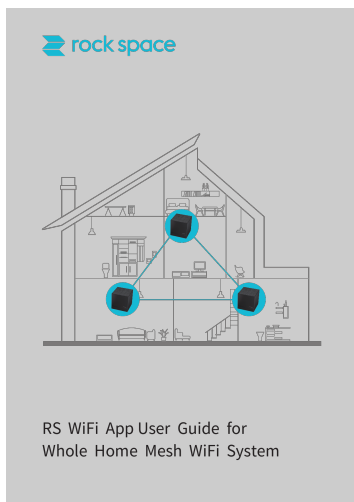
RSD0607/RSD0608 Technical Phone Support: 1 833 816-6558 Service Time: EST:

9:00-17:00 / PDT: 06:00-14:00,from Monday to Friday 24hour Online After-sales

Service: https: //rockspace. afterservice. vip The website list above is the ONLY of...

lang:en score:29 filesize: 2.3 M page_count: 4 document date: 2020-11-24



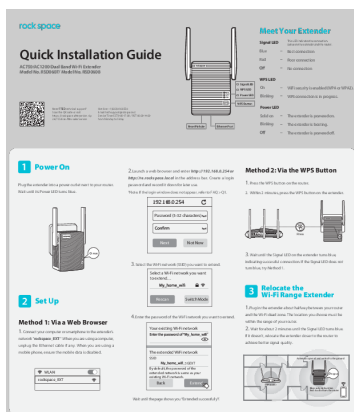


[\[pdf\]](#) Specifications Guide Accessories

RS wifi app user guide for whole home mesh system AC1200 Mesh WiFi System User Guide Copyright Statement © 2019 Shenzhen Renqing Excellent Investment Co Ltd is a registered trademark legally held by Other brand and product 11 dic 2020 — Pictures images specifications herein are references only To improve internal design operational function or reliability rockspace cc pub

RS WiFi App User Guide for Whole Home Mesh WiFi System Copyright Statement 2019 Shenzhen Renqing Excellent Investment Co.,Ltd. is a registered trademark legally held by Shenzhen Renqing Excellent Investment Co.,Ltd.Other brand and product names mentioned herein are trademarks or registered tradem...

lang:en score:27 filesize: 45.08 M page_count: 41 document date: 2019-09-06

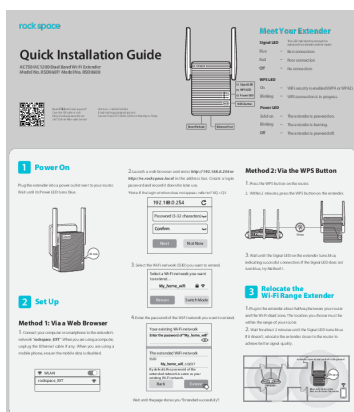


[\[pdf\]](#) Installation Guide Frequently Asked Questions Guide

rockspace AC750 AC1200 WiFi 20210520 user AC750 1200 Wifi extender Rock Space cc pub |||

Quick Installation Guide AC750/AC1200 Dual Band Wi-Fi Extender Model No. RSD0607/ Model No. RSD0608 Need FREE technical support Scan the QR code or visit <https://rockspace.afterservice.vip> 24/7 Online After-sales Service Hot-line: 1 833 816-6558 Email: techsupport@rockspace.cc Service Time: E...

lang:en score:27 filesize: 1.47 M page_count: 2 document date: 2021-06-25

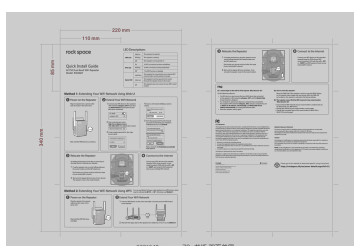


[\[pdf\]](#) Installation Guide Frequently Asked Questions Guide

rockspace AC750 AC1200 WiFi 20210520 user Quick Installation Guide AC750 Wi Fi Range Extender AC1200 20220216 v 1644998327 cdn shopify s files 1 0589 7253 7013 |||

Quick Installation Guide AC750/AC1200 Dual Band Wi-Fi Extender Model No. RSD0607/ Model No. RSD0608 Need FREE technical support Scan the QR code or visit <https://rockspaceworld.com> 24/7 Online After-sales Service Hot-line: 1 833 816-6558 Email: techsupport@rockspace.cc Service Time: EST 10:00-21...

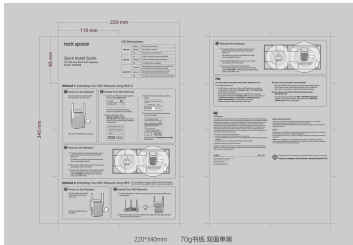
lang:en score:26 filesize: 1.31 M page_count: 2 document date: 2022-02-16



[\[pdf\]](#) User Manual

rockspace AC750 WiFi 20180608 V1 user User manual RSD0607 Shenzhen Renqing Excellent Investment Co Ltd RQZY3402 AC1200 Dual Band WiFi Repeater 2ALT3 2ALT3RQZY3402 rqzy3402 ...

lang:en score:14 filesize: 2.95 M page_count: 1 document date: 2018-06-08

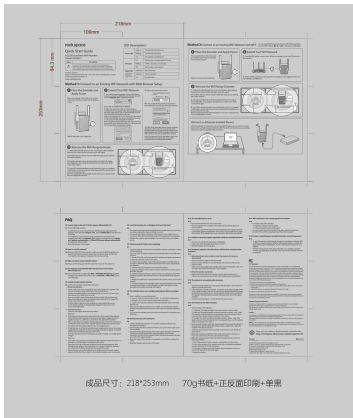


[\[pdf\]](#) User Manual

rockspace AC1200 WiFi 20180608 V1 user User manual RSD0608 Shenzhen Renqing Excellent Investment Co Ltd RQZY3402 Dual Band WiFi Repeater AC750 2ALT3 2ALT3RQZY3402 rqzy3402

...

lang:en score:14 filesize: 2.97 M page_count: 1 document date: 2018-06-08

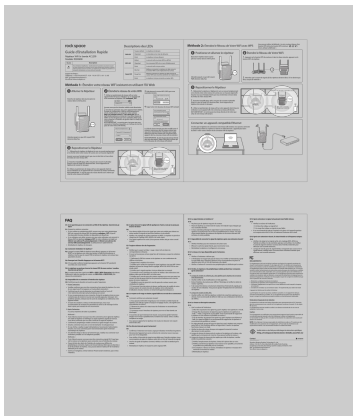


[\[pdf\]](#) User Manual Quick Start Guide Guide

rockspace AC1200 WiFi 20200606 V1 up user manual Shenzhen Renqing Excellent Technology Co Ltd RQZY002 AC2100 Dual Band WiFi Repeater 2AUA9 2AUA9RQZY002 rqzy002

84.3 mm 109mm 218mm LED Descriptions Quick Start Guide AC2100 Dual Band WiFi Repeater Model: RSD0617 Button Description RST To restore the WiFi range extender to the original factory settings: Plug the extender into a power outlet the reset pinhole is on the bottom of the extender , using ...

lang:en score:14 filesize: 1.66 M page_count: 1 document date: 2020-07-13



[\[pdf\]](#) Guide

rockspace AC1200 WiFi 20180710 V1 user Répéteur WiFi bi bande Modèle RSD0608 Support technique rockspace local ou l accès IP 192 168 0 254 entré dans la barre d adresse B16Pg4uvweS ref dp product quick view m media amazon images l |||

Guide d Installation Rapide Rpteur WiFi bi-bande **AC1200** Modle: RSD0608 Bouton Description RST Pour rinitialiser l ampli cateur : Veuillez brancher le produit une prise de courant et utiliser l extrmit d un trombone ou d un objet similaire pour maintenir ce bouton enfonc pendant environ 8 secon...

lang:fr score:13 filesize: 2.25 M page_count: 1 document date: 2021-10-08