

Manuals.plus /

› Jugeman /

› Jugeman Y66 Smart Watch User Manual

Jugeman Y66

Jugeman Y66 Smart Watch User Manual

Model: Y66 | Brand: Jugeman

1. GETTING STARTED

1.1 Package Contents

Verify that all items are present in your product package:

- Jugeman Y66 Smart Watch
- Charging Cable
- User Manual



Image: The Jugeman Y66 Smart Watch, charging cable, and user manual are included in the package. Dimensions of the watch are also shown.

1.2 Charging the Device

Before initial use, fully charge your smart watch. Connect the magnetic charging cable to the charging contacts on the back of the watch and plug the USB end into a standard USB power adapter (not included) or a computer USB port.

- A full charge typically takes approximately 1.5 hours.
- The watch can operate for up to 7 days on a single charge with typical use, and has a standby time of about 30 days.

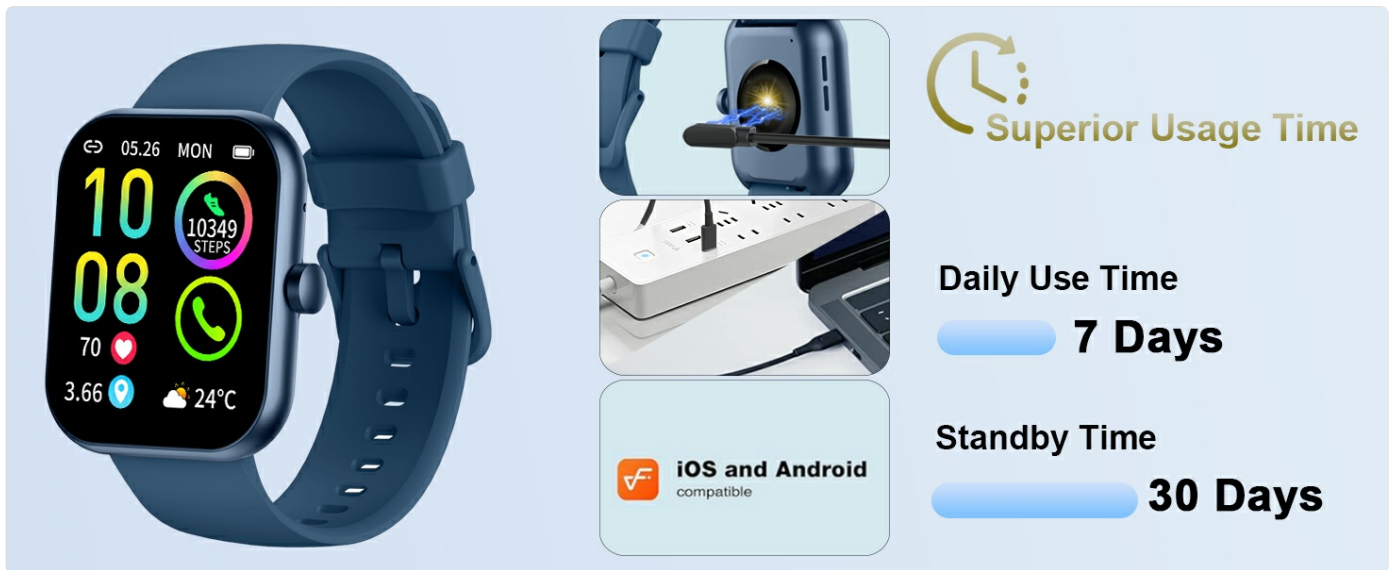


Image: The smart watch connected to its magnetic charging cable, illustrating the charging process and highlighting the superior usage time of 7 days for daily use and 30 days standby.

1.3 App Installation and Pairing

To unlock the full functionality of your Jugeman Y66 Smart Watch, you need to connect it to your smartphone via the 'GloryFit' application.

1. **Enable Bluetooth:** Ensure Bluetooth is enabled on your smartphone.
2. **Download App:** Search for 'GloryFit' in the Google Play Store (for Android) or Apple App Store (for iOS) and download it.
3. **Register/Login:** Open the 'GloryFit' app and follow the on-screen instructions to create an account or log in.
4. **Pair Device:** In the app, navigate to the device section, select 'Add Device' or 'Bind Device', and choose 'Y66' from the list of available devices. Confirm the pairing request on both your phone and the watch.

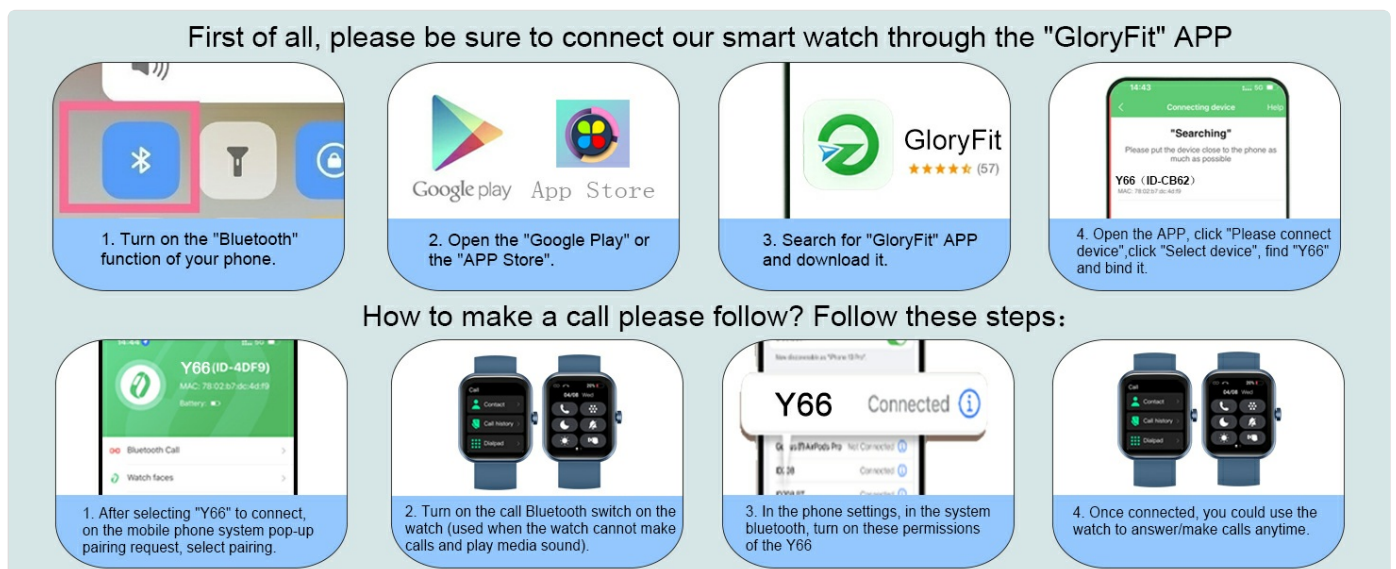


Image: A step-by-step guide showing how to enable Bluetooth, download the 'GloryFit' app from app stores, search for the app, and connect the Y66 smart watch to the phone.

2. OPERATING INSTRUCTIONS

2.1 Basic Navigation

- **Power On/Off:** Press and hold the side button to power the watch on or off.
- **Wake Screen:** Raise your wrist or press the side button to wake the screen.
- **Swipe Gestures:** Swipe up, down, left, or right on the touchscreen to navigate through menus, notifications, and quick settings.
- **Select:** Tap an icon or option to select it.
- **Back:** Swipe right or press the side button to go back to the previous screen.

2.2 Customizing Watch Faces

The Jugeman Y66 Smart Watch offers a variety of watch faces to personalize your device.

- **On Watch:** Press and hold the watch face, then swipe left or right to browse pre-installed faces. Tap to select.
- **Via App:** Open the 'GloryFit' app, go to 'Device' > 'Dial Settings' to access over 220 cloud-based watch faces. You can also upload your own photos to create custom watch faces.



Image: The smart watch displaying various customizable watch faces, illustrating the option to choose from over 220 cloud-based designs or use personal photos.

2.3 Bluetooth Calling and Notifications

Once paired with your smartphone, the watch allows for direct call management and message alerts.

1. **Enable Call Function:** After initial app pairing, ensure the Bluetooth call switch is enabled on the watch. This allows the watch to handle calls and play media sound.
2. **Make Calls:** Access the dial pad or contacts list on your watch to initiate a call.
3. **Receive Calls:** When a call comes in, the watch will display the caller ID. You can answer or reject the call directly from your wrist.
4. **Message Notifications:** The watch will vibrate and display notifications for incoming messages from various social media platforms (e.g., Facebook, WhatsApp, Instagram, Twitter, SMS). Ensure app notifications are enabled in the 'GloryFit' app.

BLUETOOTH CALL AND MESSAGE ALERT

Make /Receive calls anytime & Read Messages



Image: The smart watch interface showing call logs, contacts, and a dial pad for making and receiving calls. It also illustrates notifications from various social media applications.

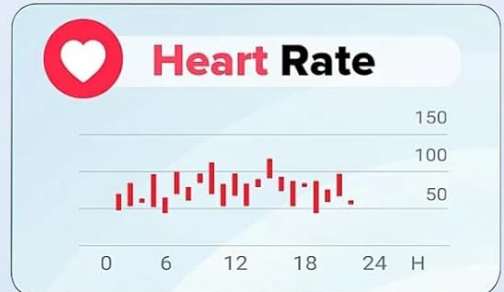
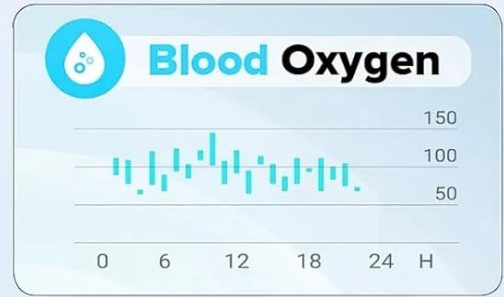
2.4 Health Monitoring Features

The Jugeman Y66 Smart Watch is equipped with advanced sensors to monitor various health metrics.

2.4.1 Heart Rate Monitoring

The watch continuously monitors your heart rate throughout the day. You can view real-time data on the watch or detailed historical data in the 'GloryFit' app.

24 HEART RATE MONITORING



SLEEP MONITOR

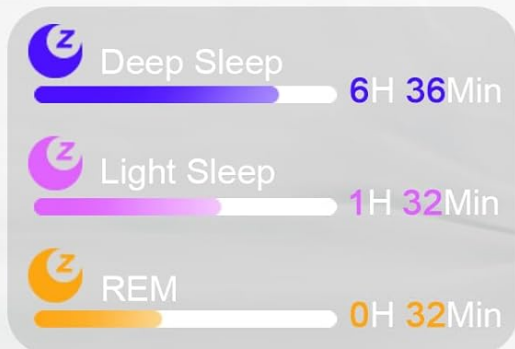


Image: The smart watch displaying current heart rate (70 bpm) and a graph of heart rate over time. Below, sleep monitoring data is shown, including deep sleep, light sleep, and REM stages.

2.4.2 Sleep Tracking

The watch automatically tracks your sleep patterns, including light sleep, deep sleep, and awake times. This data helps you understand your sleep quality and develop healthier sleep habits.

2.4.3 Blood Oxygen Monitoring

Monitor your blood oxygen levels directly from your wrist. This feature provides insights into your overall respiratory health.

2.4.4 Breathing Exercises

Utilize the guided breathing exercises feature to help relieve stress and anxiety. Follow the on-screen prompts for controlled inhalation and exhalation.

BREATHING EXERCISES

Relaxing deep breathing exercises can help you relieve stress and anxiety

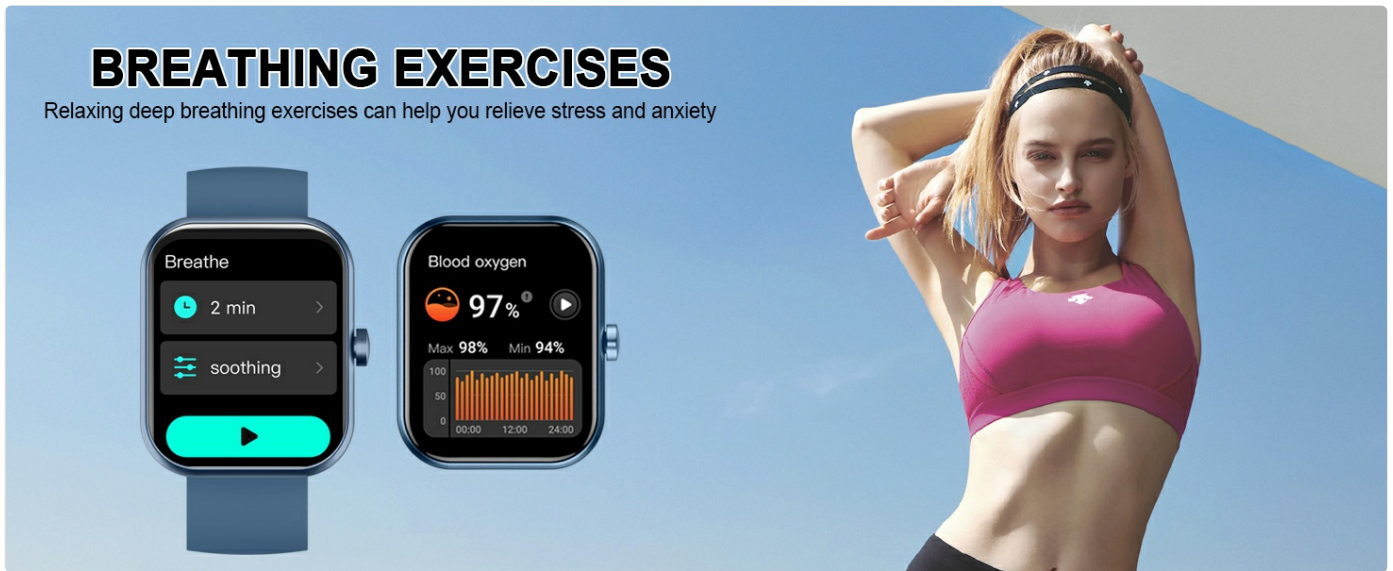


Image: The smart watch displaying options for breathing exercises (e.g., 2 min soothing) and a screen showing blood oxygen saturation levels (97%).

2.5 Sports Modes

The Jugeman Y66 Smart Watch supports over 113 indoor and outdoor sports modes to accurately track your workouts.

- **Available Modes:** Running, Cycling, Skipping, Walking, Mountain Climbing, Rock Climbing, Basketball, Football, Badminton, Yoga, Dance, and many more.
- **Tracking:** Select your desired sport mode on the watch to record data such as steps, distance, calories burned, and heart rate during your activity.
- **Data Review:** View detailed workout summaries on the watch and in the 'GloryFit' app.

113+BUILT-IN SPORTS MODES

Workout Modes & Intelligent Exercise Recognition



1092 Kcal



8.35 Km



24302 Steps

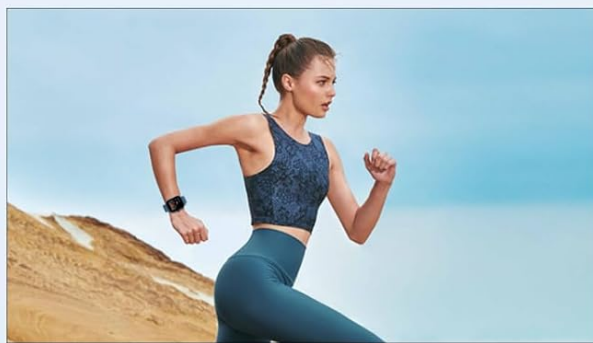


Image: A collage showing various sports icons representing over 113 built-in sports modes, along with images of individuals engaging in activities like running, cycling, skipping, and playing tennis, demonstrating the watch's fitness tracking capabilities.

2.6 Other Smart Features

The watch includes several practical tools to enhance your daily life:

- **Stopwatch & Timer:** For precise timing during activities.
- **Music Control:** Control music playback on your smartphone directly from the watch.
- **Weather Forecast:** Get real-time weather updates.
- **Sedentary Reminder:** Alerts you to move after periods of inactivity.
- **Alarm Clock:** Set silent vibrating alarms.
- **Remote Photography:** Use your watch as a remote shutter for your phone's camera.
- **Calculator:** A basic calculator for quick computations.
- **Find Phone:** Helps locate your paired smartphone by making it ring.

IP68 WATERPROOF

IP68 waterproof and dustproof, the watch can be used normally when you wash your hands and when it rains.



Shower



Wash hands



Rain

Image: The smart watch being splashed with water, illustrating its IP68 waterproof capability. Icons below indicate suitability for showering, hand washing, and use in rain.

3.2 Cleaning Instructions

To maintain the watch's appearance and functionality:

- Wipe the watch and strap regularly with a soft, damp cloth.
- Avoid using harsh chemicals, abrasive cleaners, or solvents.
- Ensure the charging contacts are clean and dry before charging.

3.3 Battery Life and Charging Tips

- To maximize battery life, reduce screen brightness, limit frequent notifications, and disable features not in use.
- Charge the watch fully before long periods of inactivity.
- Avoid exposing the watch to extreme temperatures, which can affect battery performance.

4. TROUBLESHOOTING

If you encounter issues with your Jugeman Y66 Smart Watch, refer to the following common problems and solutions:

Problem	Solution
Watch not turning on	Ensure the watch is fully charged. Press and hold the side button for at least 10 seconds to force a restart.
Bluetooth connection issues	Check if Bluetooth is enabled on both the watch and your phone. Ensure the watch is within range. Try unpairing and re-pairing the device in the 'GloryFit' app. Restart both devices.
Notifications not appearing	Verify that app notifications are enabled in the 'GloryFit' app settings and in your phone's system settings for the 'GloryFit' app. Ensure the watch is connected via Bluetooth.
Inaccurate health data	Ensure the watch is worn snugly on your wrist, about one finger's width above the wrist bone. Clean the sensor on the back of the watch. Avoid excessive movement during measurements.
Screen unresponsive	Restart the watch. If the issue persists, ensure the screen is clean and dry.
Short battery life	Reduce screen brightness, disable always-on display, limit frequent heart rate monitoring, and turn off unnecessary notifications. Ensure background app usage is optimized on your phone.

5. PRODUCT SPECIFICATIONS

Feature	Specification
Model Name	Y66
Brand	Jugeman
Screen Size	1.96 Inches HD Touch Color Screen
Screen Resolution	320*385 pixels
Connectivity	Bluetooth 5.3
Operating System	Android Wear 2.8 (compatible with Android and iOS)
Water Resistance	IP68
Battery Type	Lithium Polymer (1 A battery included)
Charging Time	Approx. 1.5 hours
Typical Usage Time	Up to 7 days
Standby Time	Approx. 30 days
Item Weight	3.2 ounces
Package Dimensions	6.81 x 3.27 x 0.75 inches
Special Features	Bluetooth Call/Dial/Contacts/Call history, 110+ Sports Modes, Heart Rate/Sleep/Blood Oxygen Monitoring, Weather, Alarm, Sedentary Reminder, Remote Camera, Music Control, Female Menstrual Period Prediction, Wrist Up Awake, APP Notifications.

6. WARRANTY AND SUPPORT

6.1 Warranty Information

Your Jugeman Y66 Smart Watch is covered by a standard manufacturer's warranty against defects in materials and workmanship. The specific duration and terms of the warranty may vary by region and retailer. Please retain your proof of purchase for warranty claims.

The warranty does not cover damage caused by misuse, accident, unauthorized modification, or failure to follow the instructions in this manual.

6.2 Customer Support

For technical assistance, troubleshooting, or warranty inquiries, please contact Jugeman customer support through the following channels:

- **Email:** Refer to your product packaging or the 'GloryFit' app for specific contact details.
- **Online Support:** Visit the official Jugeman website for FAQs and support resources.

When contacting support, please provide your product model (Y66) and a detailed description of the issue.