

Non-Invasive Mole & Skin Tag Remover Pen

Non-Invasive Mole and Wart Removal Pen User Manual

Model: Non-Invasive Mole & Skin Tag Remover Pen | Brand: Generic

1. PRODUCT OVERVIEW

The Non-Invasive Mole and Wart Removal Pen is an advanced device designed for the gentle and effective removal of various skin imperfections such as moles, warts, skin tags, and dark spots. Utilizing modern technology, it aims to provide a non-surgical solution for clearer skin.



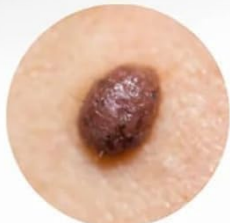
Figure 1: The Non-Invasive Mole and Wart Removal Pen and its packaging.

Key Features:

- **Effective & Painless:** Advanced technology removes skin tags, moles, and warts without cutting or scarring, ensuring a gentle experience.
- **Safe for All Skin Types:** Dermatologist-tested formula is non-invasive and suitable for sensitive skin, face, neck, and body.
- **Quick & Easy to Use:** Simply apply the pen to target areas for fast results—no messy creams or painful procedures required.
- **Portable & Reusable:** Compact and lightweight design makes it perfect for travel and home use, with long-lasting performance.
- **Natural Healing:** Promotes skin recovery without irritation, leaving your skin smooth and blemish-free.

Ultimate Solution

For All Skin Problems



MOLES



NEVUS



SKIN TAGS



WARTS



DARK SPOTS



Figure 2: The device is designed to address common skin concerns including moles, nevus, skin tags, warts, and dark spots.

2. PRODUCT COMPONENTS

Familiarize yourself with the different parts of the Non-Invasive Mole and Wart Removal Pen for proper handling and operation.



Figure 3: Labeled diagram of the device components, including the Lid, LED Indicator, Power Switch, Probe, Conductive Strip, and Battery Case.

- **Probe:** The active tip that delivers the treatment.
- **Lid:** Protective cover for the probe.
- **LED Indicator:** Displays device status (e.g., power on, charging).
- **Power Switch:** Button to turn the device on/off and adjust settings.
- **Conductive Strip:** Area to be held for proper electrical contact during use.
- **Battery Case:** Houses the power source for the device.

3. SETUP AND PREPARATION

1. **Charge the Device:** Ensure the device is fully charged before first use. Connect the provided charging cable to the device and a suitable power source. The LED indicator will show charging status.
2. **Clean the Skin:** Before each use, thoroughly clean the target skin area with mild soap and water, then pat dry. Avoid using alcohol-based cleansers immediately before treatment as they can dry out the skin.
3. **Personal Preparation:** Ensure your hands are clean and dry. It is recommended to perform a patch test on a

small, inconspicuous area of skin first to assess sensitivity.

4. OPERATING INSTRUCTIONS

Follow these steps carefully for safe and effective use of the removal pen.

1. **Power On:** Press and hold the Power Switch for a few seconds to turn on the device. The LED indicator will illuminate.
2. **Select Intensity (if applicable):** If your model has adjustable intensity levels, briefly press the Power Switch to cycle through the settings. Start with the lowest setting and increase if necessary, based on comfort and skin reaction.
3. **Position the Device:** Gently place the Probe directly onto the skin imperfection you wish to treat. Ensure good contact. Hold the device firmly, ensuring your fingers are in contact with the Conductive Strip.
4. **Apply Treatment:** Activate the treatment by pressing the Power Switch (or a dedicated treatment button, if present). Move the pen slowly and steadily over the target area. Do not press too hard or stay in one spot for too long.
5. **Observe Skin Reaction:** During treatment, you may feel a slight tingling sensation. If you experience discomfort, stop immediately.
6. **Post-Treatment:** After treating the area, turn off the device by pressing and holding the Power Switch. Clean the probe as described in the Maintenance section.

Advabced

CO2 Laser Technology

Powered by clinically proven CO2 laser technology with over 30 years of medical use, ensuring safe and effective skin resurfacing.

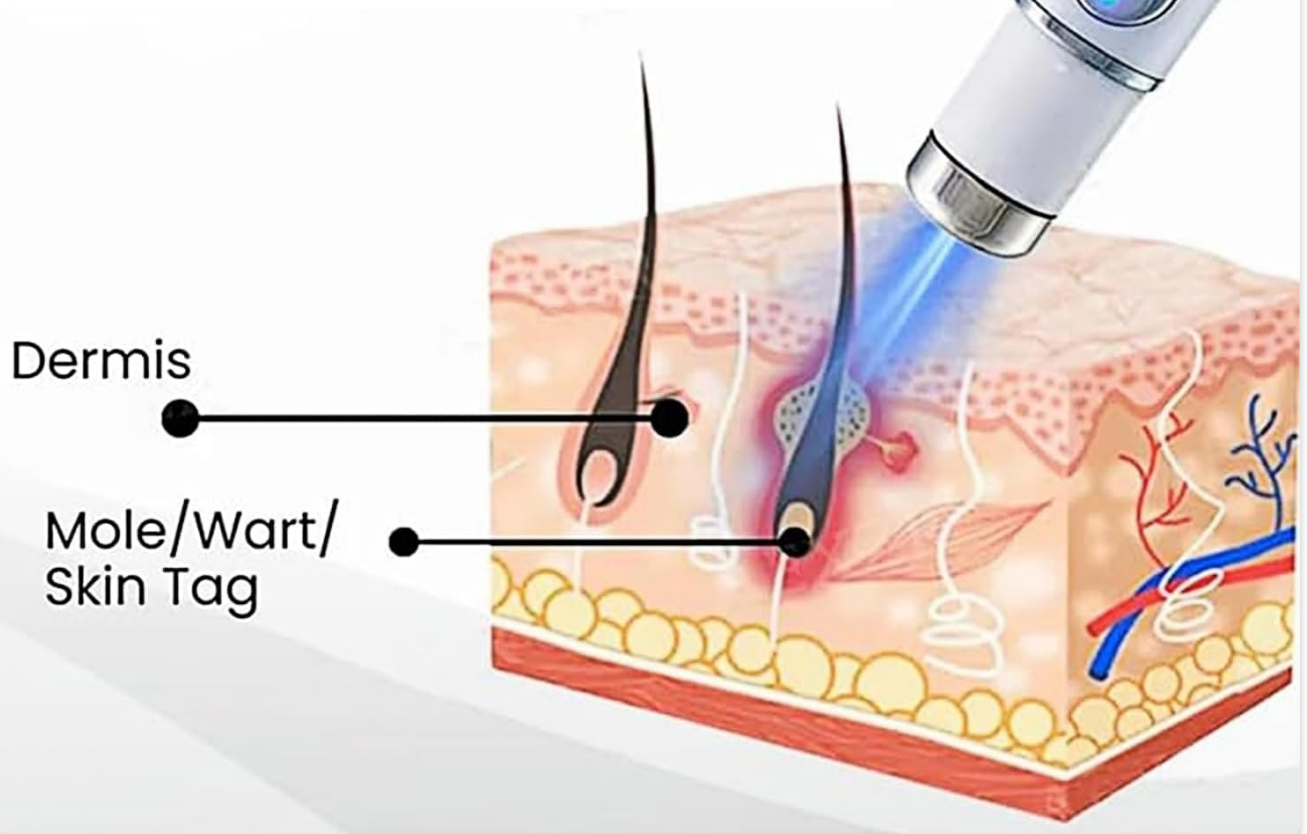
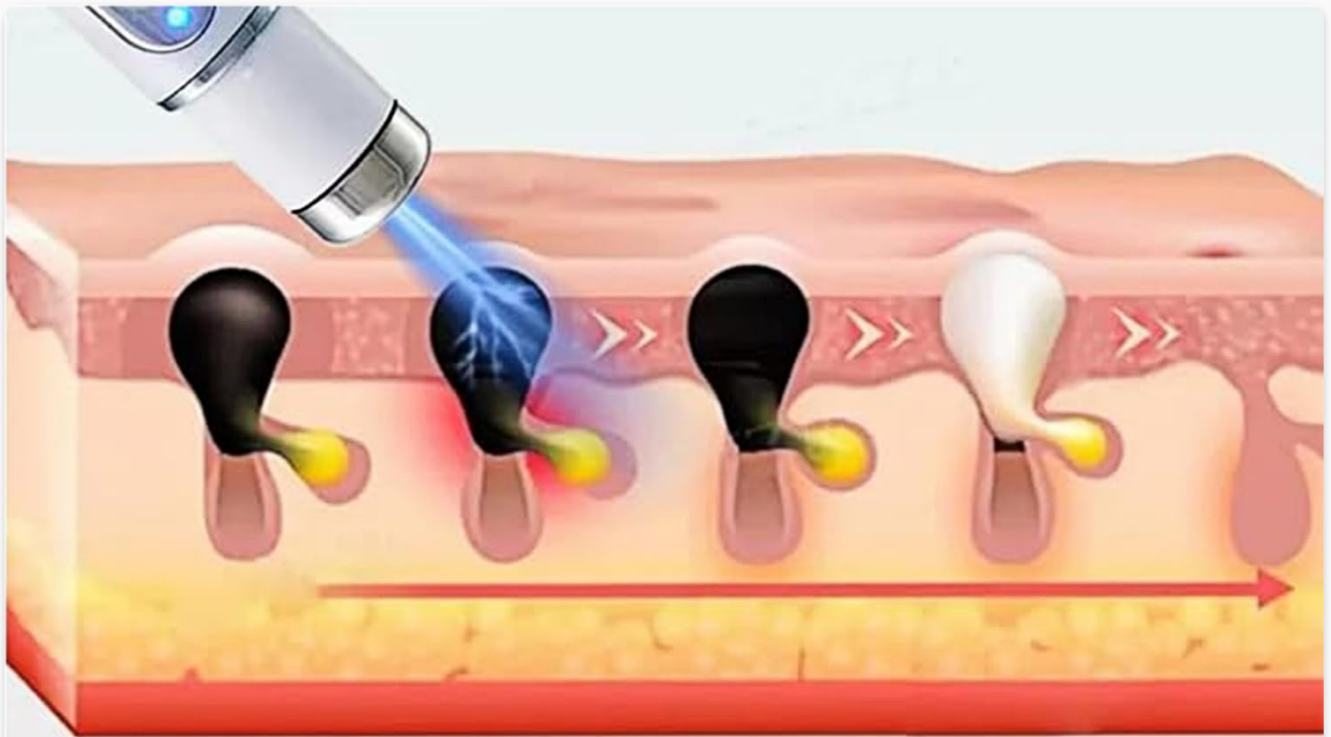


Figure 4: Illustration of the advanced CO2 laser technology targeting skin imperfections at the dermal layer.



uses electrical ionic technology to instantly remove skin tags and unwanted tissue and reduce discoloration and blemishes.



Figure 5: The process of skin tag removal using electrical ionic technology, from initial state to complete removal and reduced discoloration.

Fast & Visible Results

2-Week Before & After Results



Figure 6: Visual representation of typical results after two weeks of consistent use, showing reduction in moles and skin tags.

5. MAINTENANCE AND CARE

- **Cleaning the Probe:** After each use, gently wipe the probe with a clean, dry cloth. Do not use abrasive cleaners or immerse the device in water.
- **Storage:** Store the device in a cool, dry place, away from direct sunlight and out of reach of children. Ensure the protective lid is on the probe when not in use.
- **Battery Care:** To prolong battery life, avoid fully discharging the device frequently. Charge it regularly, even if not in constant use.

6. TROUBLESHOOTING

Problem	Possible Cause	Solution
---------	----------------	----------

Problem	Possible Cause	Solution
Device does not turn on.	Low battery or device malfunction.	Ensure the device is fully charged. If it still doesn't turn on, contact customer support.
No sensation during use.	Poor skin contact or low intensity setting.	Ensure the probe is in full contact with the skin and your fingers are on the conductive strip. Increase intensity if applicable.
Skin irritation after use.	Over-treatment or sensitive skin.	Reduce treatment duration or frequency. Apply a soothing, non-irritating cream. If irritation persists, discontinue use and consult a dermatologist.

7. SPECIFICATIONS

- **Model Name:** Non-Invasive Mole & Skin Tag Remover Pen
- **Brand:** Generic
- **Item Form:** Gel (Note: This seems to be a misclassification in the source data, as the product is a pen.)
- **Color:** White
- **Number of Items:** 1
- **Manufacturer:** Generic
- **ASIN:** B0FB8KM2FZ
- **Date First Available:** May 29, 2025

8. SAFETY INFORMATION AND LEGAL DISCLAIMER

Important Safety Precautions:

- Do not use on broken, irritated, or infected skin.
- Avoid direct contact with eyes.
- Keep out of reach of children.
- Consult a healthcare professional before use if you have any underlying skin conditions, medical conditions, or are pregnant/nursing.
- This device is intended for cosmetic use only and is not a substitute for professional medical diagnosis or treatment.

Legal Disclaimer:

Statements regarding dietary supplements have not been evaluated by the FDA and are not intended to diagnose, treat, cure, or prevent any disease or health condition.

While the provided legal disclaimer refers to "dietary supplements," it is included here as per the source data. Users should understand that this product is a topical device and not an ingestible supplement. Always consult with a medical professional for any health concerns.

9. WARRANTY AND SUPPORT

For warranty information or technical support, please refer to the contact details provided with your product

packaging or visit the manufacturer's official website. Keep your purchase receipt as proof of purchase.

For general inquiries or assistance, you may contact the seller through the platform where the product was purchased.



© 2025 Generic. All rights reserved.