



[Manuals.plus](#) /

› [Vanity Planet](#) /

› Vanity Planet Mila Contour & Define LED Facial Roller User Manual

## Vanity Planet MILA

# Vanity Planet Mila Contour & Define LED Facial Roller User Manual

Model: MILA

### INTRODUCTION

Thank you for choosing the Vanity Planet Mila Contour & Define LED Facial Roller. This device is designed to enhance your skincare routine by combining cooling, sonic vibration, and red light therapy. Please read this manual thoroughly before use to ensure proper operation and care.



# *MILA a 3-in-1* Skincare Device

**Lymphatic Drainage**  
Depuff and Tone



**LED Light**  
Therapy



**Sonic Facial**  
Massage



Image: The Vanity Planet Mila Contour & Define LED Facial Roller, highlighting its 3-in-1 functions: Lymphatic Drainage, LED Light Therapy, and Sonic Facial Massage.

## **IMPORTANT SAFETY INFORMATION**

- Do not use on broken, irritated, or infected skin.
- Consult a physician before use if you have any skin conditions, medical implants, or are pregnant.
- Keep out of reach of children.
- Avoid direct eye contact with the red LED light.
- Do not submerge the device in water. Clean with a damp cloth only.
- Use only the provided USB cable for charging.
- Discontinue use if you experience discomfort or adverse reactions.

## **WHAT'S INCLUDED**

- Vanity Planet Mila Contour & Define LED Facial Roller

- USB Cable
- User Manual
- Cleaning Cloth

## PRODUCT FEATURES

The Vanity Planet Mila Contour & Define LED Facial Roller is designed with advanced features to optimize your skincare:

- **Sonic LED Facial Roller with Red Light Therapy:** Reduces fine lines, wrinkles, and puffiness.
- **Customizable Modes:** Choose from low and high sonic vibration intensity with red LED, or red LED only.
- **Innovative Design:** Clear barrel allows red LED light to pass through for enhanced lymphatic drainage and even skin tone.
- **Boosts Circulation:** Strategically placed 3-D nodules stimulate circulation for a radiant glow.
- **Rechargeable & Portable:** Convenient for at-home or travel use.
- **Ergonomic Design:** Ensures comfortable and effective treatment.
- **Smart Auto Shut-Off:** Device automatically turns off after a set period to prevent overuse.
- **Easy to Clean:** Designed for simple and hygienic maintenance.



# Clinically Proven *LED Therapy*

- **Promotes Collagen Production**
- **Lymphatic Drainage Depuffs**
- **Boosts Oxygen Flow**
- **Improves Skin Tone**
- **Reduces Wrinkles**

Image: Diagram illustrating the benefits of LED therapy, including promoting collagen production, lymphatic drainage, boosting oxygen flow, improving skin tone, and reducing wrinkles.



Image: The device is shown with text indicating it reduces inflammation, signs of aging, and stimulates collagen production.

## SETUP

### Charging the Device

1. Locate the USB-C charging port at the bottom of the device.
2. Connect the provided USB cable to the device and a suitable USB power adapter (not included).
3. Allow the device to charge fully before first use. The indicator light will show charging status.

A full charge typically takes a few hours and provides multiple uses.

## OPERATING INSTRUCTIONS

For optimal results, use the Mila Contour & Define LED Facial Roller daily for 3-5 minutes on clean, dry skin, ideally before applying serums to boost absorption.

### Powering On/Off and Mode Selection

- Press and hold the power button to turn the device on. It will typically start in a mode with both red LED and sonic vibration.
- Press the power button once to cycle through modes: low sonic vibration + red LED, high sonic vibration + red LED, red LED only.
- Press and hold the power button again to turn the device off.

### Application Technique

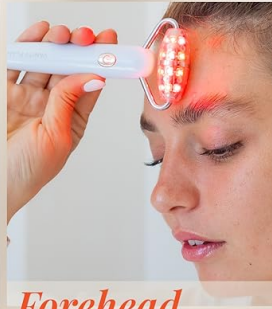
1. Ensure your skin is clean and dry.
2. Roll the device gently upwards and outwards along your facial contours.
3. Focus on specific areas as described below:

## How to Use Facial Roller



### Cheeks

Gently roll outward from the sides of your nose toward ears.



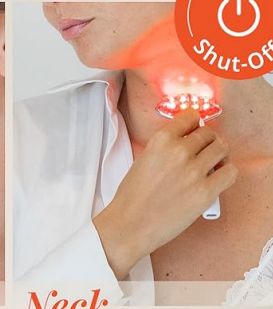
### Forehead

Start at the center of forehead and roll outward toward temples.



### Jawline

Glide the roller upward along your jawline, from chin to ear.



### Neck

Roll upward from the base of neck toward the jawline.

Image: Visual guide on how to use the facial roller on cheeks, forehead, jawline, and neck with specific rolling directions.

- **Cheeks:** Gently roll outward from the sides of your nose toward your ears.
- **Forehead:** Start at the center of your forehead and roll outward toward your temples.
- **Jawline:** Glide the roller upward along your jawline, from chin to ear.
- **Neck:** Roll upward from the base of your neck toward the jawline.

**Important:** Avoid pulling or dragging the skin. Always use upward and outward motions. Do not roll back-and-forth.

## MAINTENANCE AND CARE

- **Cleaning:** After each use, wipe the device with the provided cleaning cloth or a soft, damp cloth. Do not use harsh chemicals or abrasive cleaners.
- **Storage:** Store the device in a cool, dry place away from direct sunlight and moisture.
- **Battery:** To prolong battery life, avoid fully discharging the device frequently. Charge it regularly.

### How Often Should I Use It?

Daily or 4-5 times a week for best results.

### Is it Safe for Sensitive Skin?

Yes, it's gentle and safe for all skin types.

### How do I clean it?

Wipe with a damp cloth after use.  
Avoid harsh cleaners.

### How long is each session?

5-10 minutes on clean skin.



Image: Information on how often to use the device, its safety for sensitive skin, cleaning instructions, and recommended session length.

## PRODUCT SPECIFICATIONS

Model Name

MILA

<b>Item Model Number</b>	42540208291942
<b>Brand</b>	Vanity Planet
<b>Power Source</b>	Battery Powered
<b>Material Type</b>	Plastic
<b>Color</b>	White
<b>Unit Count</b>	1 Count
<b>UPC</b>	812485028581

---

## TROUBLESHOOTING

- **Device not turning on:** Ensure the device is fully charged. Connect it to the USB charger and wait for the indicator light to confirm charging.
  - **No vibration or LED light:** Check the selected mode by pressing the power button. Ensure the device is powered on.
  - **Reduced performance:** Clean the roller heads thoroughly. Ensure the device is fully charged.
  - If issues persist, please refer to the manufacturer's website for further support.
-