

NIMO Nimo N151

NIMO 15.6 IPS-FHD Laptop User Manual

Model: Nimo N151 | Brand: NIMO

1. INTRODUCTION

This manual provides essential information for setting up, operating, maintaining, and troubleshooting your NIMO 15.6 IPS-FHD Laptop. Designed for students and home users, this laptop combines performance with portability, featuring an Intel Pentium 4 Cores N100 processor, 8GB RAM, and 256GB SSD. Key features include a backlit keyboard, fingerprint security, and Wi-Fi 6 connectivity, ensuring a smooth and efficient user experience.



The NIMO 15.6 IPS-FHD Laptop, featuring its vibrant display and ergonomic design.

2. WHAT'S IN THE BOX

- 1 x Nimo N151 Laptop
- 1 x Type-C 65W PD Fast Charger

- 1 x User Manual
- Windows 11 Home (Pre-installed)

3. SETUP

Follow these steps for initial setup of your NIMO laptop:

1. **Unboxing:** Carefully remove all components from the packaging.
2. **Initial Charge:** Connect the Type-C 65W PD Fast Charger to the laptop and a power outlet. Allow the laptop to charge for at least 30 minutes before first use, or until the charge indicator light shows a full charge.
3. **Power On:** Open the laptop lid and press the power button. The laptop will boot up and guide you through the Windows 11 Home initial setup process.
4. **Windows Setup:** Follow the on-screen prompts to configure your region, language, network connection, and user account settings.

Your browser does not support the video tag.

Official NIMO Laptop overview video, demonstrating its features and ease of use for work and study.

4. OPERATING YOUR NIMO LAPTOP

4.1 Display

The NIMO laptop features a 15.6-inch Full HD (1920x1080) IPS Anti-Glare Display. This screen delivers vivid colors and wide viewing angles, designed to reduce eye strain during extended use. The slim bezels contribute to an 85% screen-to-body ratio, providing an immersive visual experience for all your tasks.

Lightning Fast and Smooth Display



FHD 1920*1080



IPS



Bright View



Eye Protection



1920 × 1080

The laptop's display offers lightning-fast and smooth visuals with FHD, IPS, bright view, and eye protection.

4.2 Keyboard and Input

The laptop is equipped with a full-sized backlit keyboard, enhancing visibility in low-light conditions. The integrated fingerprint reader provides secure and convenient one-touch login, eliminating the need for passwords.

Backlit and Full Keyboard



Backlit



Touch Pad



Fingerprint



Numeric Keypad



The backlit and full keyboard provides comfortable typing and includes a numeric keypad.

Powered By Intel 12th Gen Alder Lake N100



The fingerprint sensor allows for quick and secure login.

4.3 Ports and Connectivity

The NIMO laptop offers a variety of ports for versatile connectivity, including USB 2.0, USB 3.0, HDMI, and Type-C ports. It also supports Wi-Fi 6 and Bluetooth 5.2 for fast and reliable wireless connections.

- 1 x USB 2.0 Port
- 3 x USB 3.0 Ports
- HDMI Port
- Type-C Ports (one for charge only, one multifunction)
- Micro SD Card Slot
- Headphone Combo Jack
- Kensington Lock Slot

Multiple Ports for Greater Versatility

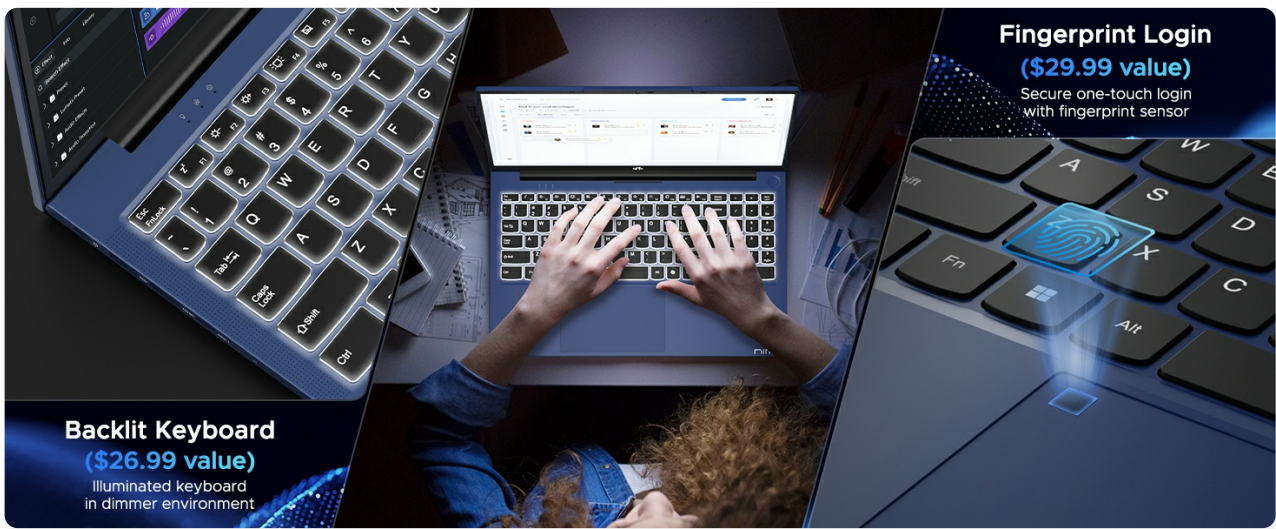
Consider multi-use scenarios for you



Multiple ports provide greater versatility for various usage scenarios.

4.4 Audio and Webcam

Enjoy clear audio with the integrated sound system. The laptop also features a 2.0 MP rear webcam, suitable for video calls and online meetings. A built-in privacy camera switch allows you to easily disable the webcam when not in use, ensuring your privacy.



The privacy-focused camera convenience allows you to easily disable the webcam.

4.5 Battery and Charging

The NIMO laptop is powered by a Lithium Polymer battery, offering an average battery life of 5 hours. It supports 65W PD fast charging via the Type-C port, allowing for quick power replenishment.





Efficient charging provides significant usage time.

5. MAINTENANCE

To ensure the longevity and optimal performance of your NIMO laptop, consider the following maintenance tips:

- **Cleaning:** Regularly clean the screen with a microfiber cloth and a specialized screen cleaner. Use compressed air to clear dust from keyboard keys and vents.
- **Software Updates:** Keep your Windows 11 operating system and drivers updated to ensure security and performance.
- **Battery Care:** Avoid completely draining the battery frequently. For long-term storage, charge the battery to about 50-60%.
- **Physical Protection:** Use a protective sleeve or case when transporting the laptop to prevent scratches and impacts.

6. TROUBLESHOOTING

Here are some common issues and their potential solutions:

Problem	Possible Solution
Laptop does not power on.	Ensure the charger is properly connected and the power outlet is functional. Try a different outlet. If the battery is completely drained, allow it to charge for a while before attempting to power on.
Screen is blank or black.	Check if the laptop is powered on. Adjust screen brightness. Connect to an external monitor to check if the display output is working.
Wi-Fi connection issues.	Restart your router and modem. Check Wi-Fi settings on the laptop to ensure Wi-Fi is enabled and connected to the correct network. Update wireless drivers.
Slow performance.	Close unnecessary applications. Check for background processes. Ensure sufficient free space on the SSD. Run a virus scan.

7. SPECIFICATIONS

Feature	Detail
Brand	NIMO
Model Name	Nimo N151
Screen Size	15.6 Inches
Screen Resolution	1920 x 1080 pixels
Max Screen Resolution	1920x1080 Pixels
Processor	3.4 GHz pentium_other (Intel Pentium 4 Cores N100)
RAM	8 GB DDR4 (3200 MHz)
Hard Drive	256 GB SSD (Solid State)
Graphics Coprocessor	Integrated Graphics
Chipset Brand	Intel
Wireless Type	802.11a/b/g/n/ac (Wi-Fi 6 & Bluetooth 5.2)
USB Ports	1 x USB 2.0, 3 x USB 3.0
Average Battery Life	5 Hours
Operating System	Windows 11 Home
Item Weight	3.8 pounds
Product Dimensions	14.07 x 8.98 x 0.76 inches
Rear Webcam Resolution	2 MP
Special Feature	Backlit Keyboard, Fingerprint Reader, HD Audio, Memory Card Slot, Numeric Keypad

8. WARRANTY AND SUPPORT

NIMO Laptops are designed for performance and durability, backed by comprehensive support:

- **2-Year Manufacturer's Warranty:** Your NIMO laptop is covered by a 2-Year Manufacturer's Warranty from Nimo Direct Inc. This warranty ensures quality and provides support for any manufacturing defects.
- **90-Day Hassle-Free Returns:** Shop confidently with a 90-Day Hassle-Free Returns policy, allowing you to return the product if it does not meet your expectations.
- **Professional Customer Assistance:** Our expert support team is available to provide quick resolutions or replacements. For any product-related questions or assistance, you can contact our professional after-sales team.

Privacy-Focused Camera Convenience

Stay in control with a built-in privacy camera switch
- easily disable your 2.0M webcam when-not in use.



NIMO is committed to providing excellent after-sales services.

ALL-AROUND PROTECTION



2 Years Support



90 Days Return to Manufacture



Email: service@nimopc.com



24 hour service

Contact our professional after-sales team via phone and live chat.

What is our after-sales service like?

We have a two-year warranty , and a 90-day return, and we also have professional technicians ready to help. If you have any questions, you can contact us at any time, and we will try our best to solve your problem.

Do you have any product-related questions?

We have a professional service team, and any product-related questions can be contacted by official website, email or telephone, and we will provide professional and high-quality customer service.

How to contact us?

You can contact us through our official website or product page, and we will reply to you as soon as we receive it and solve your confusion. Please feel free to ask us, and we will be at your service at any time.

Nimo products are covered by a 2-year support.



You may return any Nimo product for any reason within 90 days of purchase.