

[manuals.plus](#) /

› [roborock](#) /

› [roborock QV 35S Robot Vacuum and Mop Instruction Manual](#)

roborock Roborock QV 35S

roborock QV 35S Robot Vacuum and Mop User Manual

Model: Roborock QV 35S | Brand: roborock

1. SETUP AND INITIAL USE

Before first use, ensure all packaging materials are removed from the robot and the dock. Place the multifunctional dock on a hard, level surface against a wall, ensuring adequate clearance around it for the robot's operation.



The roborock QV 35S robot vacuum and its multifunctional dock, shown with the accompanying mobile application interface.

Fill the clean water tank and ensure the dirty water tank is empty. The dock automatically refills the robot's water tank and empties its dustbin, providing up to 7 weeks of hands-free cleaning.

Multifunctional Dock

With no compromise, this fully automated dock empties and washes the robot, so you can focus on what truly matters.



Mop Self-Washing



Air Drying



Auto Tank Refilling



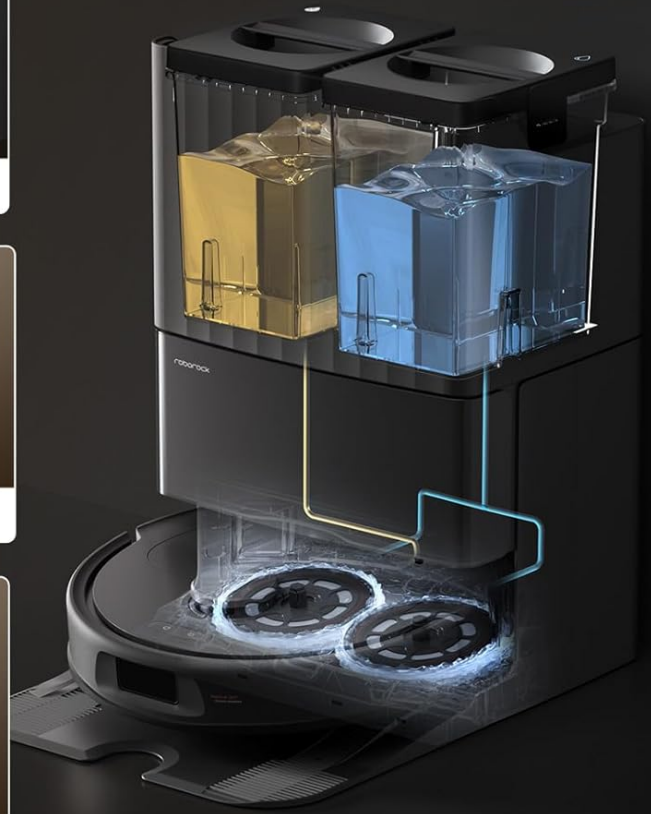
Auto Dust Emptying



Detachable Dock Base



30% Faster Charging*



*Compared to the Roborock S7. Based on Roborock internal testing

Detailed view of the multifunctional dock's capabilities, including automatic mop washing, air drying, water tank refilling, and dustbin emptying. The dock base is detachable for easy cleaning.

Connect the dock to power. Place the robot on the dock to begin initial charging and mapping. Download the Roborock app and follow the on-screen instructions to connect your device via 2.4G Wi-Fi.

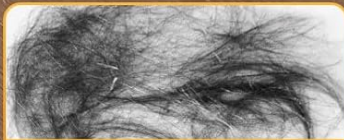
An overview video demonstrating the Roborock QV 35S Robot Vacuum and Mop, highlighting its features and initial setup process.

2. OPERATING INSTRUCTIONS

The roborock QV 35S features 10,000Pa HyperForce suction, effectively capturing embedded dirt, debris, and pet hair from various floor types including carpets and hard floors. It can vacuum and mop simultaneously or perform tasks individually based on app settings.

10,000 Pa HyperForce Suction

Designed for superior cleaning performance, effortlessly removing hair and debris from floor crevices and deep in carpets.



Buried hair and fur



Pet food



Cereal and crumbs

*Based on Roborock internal testing under Max+ mode with a full battery according to IEC 62885-2:2021/5.11 standards.

The robot vacuum demonstrating its 10,000Pa HyperForce suction power, effectively cleaning various debris from hard floors.

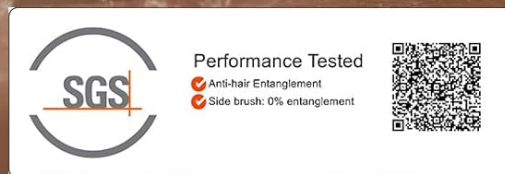
The dual anti-tangle system, featuring a rubberized floating main brush and an arc-shaped side brush, minimizes hair tangles, making it ideal for homes with pets. The side brush is SGS-certified for a 0% hair tangling rate.

Dual Anti-Tangle System

Say goodbye to hair tangles with the specially designed rubberized floating main brush and unique arc-shaped side brush, ensuring efficient performance.



0%
Hair Tangle Rate for
side brush



Close-up view of the robot's underside, showcasing the dual anti-tangle system designed to prevent hair from wrapping around the brushes.

Dual mopping pads spin up to 200 RPM, effectively removing stubborn stains. The mopping module can lift 10 mm to avoid dampening carpets. Water flow levels are adjustable via the app for different floor types.

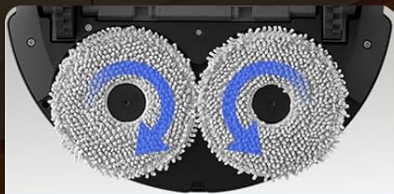
Leave Impeccable Floors

200 RPM high speed mopping with 30-level water flow for a streak-free clean.

200 RPM
Spinning Speed

10 mm
Mops Lifting

30-level
Water Flow



Dual Spinning Mops



30-level Water Flow



*Based on Roborock internal testing, selecting extreme water flow in custom mode. Actual results may vary depending on usage conditions.

Illustration of the dual spinning mops in action, highlighting their high rotation speed, automatic lifting capability, and customizable water flow settings.

Reactive Tech Obstacle Avoidance, powered by structured light, helps the robot navigate around obstacles. PreciSense LiDAR Navigation and Mapping creates detailed maps for efficient route planning, supporting up to 4 floor maps.

PreciSense LiDAR Navigation & Mapping

6x

Faster Quick
Mapping

3D

Map Display

Multi-Floor

Mapping up to 4



*Based on Roborock internal testing compared to Clean & Mapping mode.
Actual results may vary depending on environmental conditions.

The robot utilizing its Reactive Tech Obstacle Avoidance system to detect and navigate around common household items on the floor.

All-in-One Roborock App

9:00

Bedroom
Quiet



10:00

Cloakroom
Balanced



13:00

Living room
Max



18:00

Bathroom
Turbo



**Customized Clean
As You Wish**

**Smart Suggestions for
No-Go Zones**

**Temporary
Cleaning & Skip**

**Selected Zones
Cleaning**

Visual representation of the robot's advanced LiDAR navigation and mapping capabilities, including fast mapping, 3D map display, and multi-floor support.

Customize cleaning via the Roborock app: set schedules, select specific rooms, initiate temporary cleaning, or define no-go zones. Roborock SmartPlan customizes cleaning based on room and floor types.

Smart Carpet Cleaning Strategies

Fully customizable on different types of carpets.

Vacuum Carpet First

Deep Carpet Cleaning

Carpet Boost



Carpet Boost

Boost suction power when on carpets.



Deep Carpet Cleaning

Clean your carpet twice for each room.

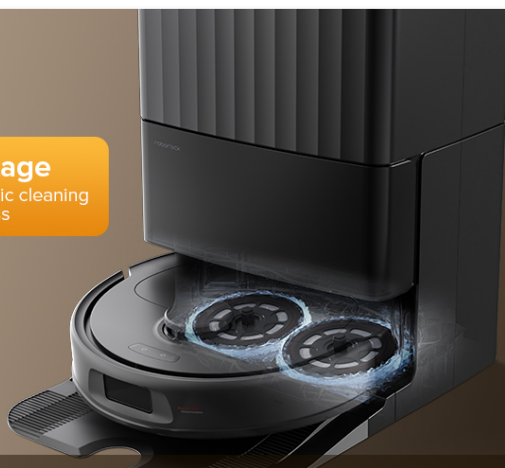


Vacuum Carpet First

Vacuum the carpet first (the mop is dry). Then start to mop.

The Roborock app interface, demonstrating various smart control features such as customized cleaning schedules, no-go zones, and temporary cleaning options.

3-Stage
dynamic cleaning
process



Auto Mop Washing

Say goodbye to manual mop cleaning

3 drying
durations
available



Self-Drying

Automatic mop drying after washing

An illustration of the robot's smart carpet cleaning strategies, including vacuuming carpets first, deep cleaning, and boosting suction on carpets.

A video demonstrating how to initiate cleaning using the physical buttons on the Roborock QV 35S robot vacuum.

3. MAINTENANCE AND CARE

Regular maintenance ensures optimal performance. The detachable dock base allows for easy cleaning of accumulated dirt. The upgraded large filter minimizes clogging.



The detachable dock base is shown being removed for thorough cleaning, preventing dirt buildup over time.

Empty the dustbin and clean the filter regularly. The dock automatically empties the robot's dustbin into a disposable dust bag, which needs replacement approximately every 7 weeks depending on usage.

A video guide on how to clean the dustbin and filter of the Roborock QV 35S robot vacuum, ensuring proper maintenance.

The brush roller and side brush should also be checked periodically for tangled hair or debris and cleaned as needed. The anti-tangle design helps minimize this, especially for pet owners.

4. TROUBLESHOOTING

Obstacle Avoidance: While equipped with Reactive Tech Obstacle Avoidance, the robot may still run over very small or low-lying objects like thin cords or tiny toys. Ensure the cleaning area is clear of such items for optimal performance.

Wi-Fi Connectivity: The robot only supports 2.4G Wi-Fi. Ensure your router is configured to support this band if you experience connection issues.

Cleaning Performance: If cleaning performance decreases, check the dustbin, filter, and brushes for clogs or wear. Ensure the water tanks are filled correctly and the mop pads are clean. The Roborock app provides smart maintenance tips and alerts for common issues.

5. SPECIFICATIONS

Feature	Detail
Brand	roborock
Model Name	Roborock QV 35S
Suction Power	10,000Pa HyperForce
Dock Features	All-in-One Dock for Hands-Free Cleaning, Mop Self-Washing, Cold Air Drying, Auto Dust Emptying, Auto Tank Refilling, Detachable Dock Base, 30% Faster Charging
Brushes	Dual Anti-Tangle Brushes (rubberized floating main brush, arc-shaped side brush)
Mopping System	Dual Lifiable Spinning Mops (200 RPM, 10mm auto mop lifting, 30 adjustable water flow levels)
Navigation	PreciSense LiDAR Navigation & Mapping, Reactive Tech Obstacle Avoidance

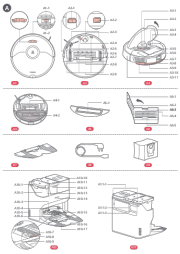





Control Method	App (Roborock app), Amazon Alexa, Google Home, Siri Shortcuts
Battery Life	180 minutes
Dimensions	13.78"L x 19.17"W x 20.43"H
Weight	31.5 pounds

6. WARRANTY AND SUPPORT

For detailed warranty information and technical support, please refer to the official Roborock user manual available as a PDF download. You can typically find this document on the product's Amazon page or the official Roborock website.

User Manual (PDF): [Download Here](#)

Related Documents - Roborock QV 35S

	<p>Roborock S7 Max Ultra Robot Vacuum and Mop Combo: Components and Assembly Guide</p> <p>A comprehensive guide detailing the components and assembly steps for the Roborock S7 Max Ultra robot vacuum and mop combo, featuring its docking station and accessories.</p>
	<p>Roborock S8 Pro Ultra Robotic Vacuum Cleaner User Manual</p> <p>Comprehensive user manual for the Roborock S8 Pro Ultra robotic vacuum cleaner, detailing safety precautions, installation, operation, app connectivity, maintenance, troubleshooting, and technical specifications.</p>
	<p>Roborock Saros 10 Robotic Vacuum Cleaner User Manual</p> <p>Comprehensive user manual for the Roborock Saros 10 Robotic Vacuum Cleaner with Refill and Drainage System. This guide covers setup, operation, maintenance, troubleshooting, and safety instructions for optimal performance.</p>
	<p>Roborock Q7 Robot Vacuum and Mop User Manual - Comprehensive Guide</p> <p>Explore the Roborock Q7 Robot Vacuum and Mop User Manual for detailed instructions on setup, operation, maintenance, and troubleshooting. Learn to maximize your cleaning experience with this advanced robotic cleaner.</p>
	<p>- Roborock S5 User Manual</p> <p>Comprehensive user manual for the Roborock S5 robot vacuum and mop, detailing setup, operation, maintenance, troubleshooting, and safety guidelines.</p>
	<p>Roborock Qrevo C Pro Robotic Vacuum Cleaner User Manual</p> <p>Comprehensive user manual for the Roborock Qrevo C Pro robotic vacuum cleaner, covering setup, operation, maintenance, troubleshooting, and technical specifications. Learn how to install, connect, use, and maintain your device for optimal performance.</p>

