

UP2000-14S

Ultra Power UAV Charger UP2000-14S Instruction Manual

Model: UP2000-14S

1. PRODUCT OVERVIEW

The Ultra Power UP2000-14S is a dual-channel intelligent charger designed for LiPo/LiHV batteries with 6-14 cells. It supports a maximum charge power of 2000W and a maximum charge current of 30A. This charger is suitable for various applications requiring efficient and reliable battery charging.



Image 1.1: Front view of the Ultra Power UP2000-14S charger, showing the display screen, control buttons, and battery connection ports.

Key Features:

- **Dual Channel Charging:** Supports simultaneous charging of two 6-14S LiPo/LiHV batteries.
- **Adjustable Charging Current:** Current can be set to 5A, 10A, 15A, 20A, 25A, or 30A.
- **Multiple Working Modes:** Includes Balance Charge mode and Storage mode.
- **Comprehensive Protection:** Features over-voltage, over-current, reverse polarity, and over-temperature protection.
- **LCD Display:** A 3.2-inch high-definition LCD provides real-time charging data.



Image 1.2: Diagram illustrating the charger's key features, including AC input, adjustable current, battery type compatibility, fast charging capability, multiple protection, and durable design.

2. SAFETY INSTRUCTIONS

Read all safety warnings and instructions before using this product. Failure to follow these instructions may result in electric shock, fire, or serious injury.

- Always use the charger in a well-ventilated area, away from flammable materials.
- Do not expose the charger to moisture, rain, or extreme temperatures.
- Ensure the input voltage matches the charger's specifications (AC 100V-240V).
- Connect batteries correctly, observing polarity. Incorrect connection can damage the charger and battery.
- Do not attempt to charge damaged or swollen batteries.
- Keep the charger away from children and pets.
- Unplug the charger from the power outlet when not in use.
- Do not disassemble or modify the charger. Refer all servicing to qualified personnel.

Wide compatibility, suitable for more fields

LiPo/LiHV Specific intelligent charger: photography/fire rescue/surveying/agriculture



Specifications

Input Voltage:	AC 100V - 240V
Charge Power:	AC 110V: One Channel Output 1200W / Two Channels Output 600Wx2 AC 220V: One Channel Output 1500W / Two Channels Output 1000Wx2
Discharge Power:	70W Max.
Battery Type:	LiPo4.20V/LiHV4.35V/LiHV4.40V/LiHV4.45V/LiHV4.50V/Intelligent Battery
Charge Current:	5A/10A/15A/20A/25A/30A
Balance Current:	1.5A/Cell Max.
Battery Cells Count:	6-14S
Charging Mode:	Charge / Storage / Intelligent Battery
Dimensions:	265x200x140 mm
Weight:	4.6 KG

Image 2.1: Visual representation of the charger's safety features, including over-current, over-voltage, short-circuit, over-heat, and reverse polarity protection.

3. PACKAGE CONTENTS

Verify that all items listed below are included in your package. If any items are missing or damaged, contact your retailer.

- UP2000-14S Charger x1
- Power Cord x1 (US standard plug)
- Adaptor Board x2
- Instruction Manual x1



UP2000-14S Chargerx1 Power Cordx1 Adaptor Boardx2 Manualx1

Image 3.1: The charger and its accessories, including the power cord, two adapter boards, and the instruction manual.

4. SETUP

4.1 Connecting Power

1. Ensure the power switch on the charger is in the 'OFF' position.
2. Connect the provided power cord to the AC input port on the back of the charger.
3. Plug the other end of the power cord into a suitable AC 100V-240V power outlet.

4.2 Connecting Batteries

1. Identify the correct battery type (LiPo/LiHV) and cell count (6-14S) for your battery.

2. Connect the main discharge plug of your battery to the AS150 Battery Port on the charger. Ensure correct polarity.
3. Connect the balance lead of your battery to the Balance Socket.
4. Repeat for the second channel if charging two batteries simultaneously.

Global AC input voltage 100V -240V

Built with wide voltage, borderless



Intuitive Operation Interface. Easy For Users To Get Started

Choosing correct charging current: 5A/10A/15A/20A/25A/30A



Image 4.1: Rear view of the charger, highlighting the AC input port, power switch, and cooling fans.

5. OPERATING INSTRUCTIONS

5.1 Powering On

Flip the power switch on the back of the charger to the 'ON' position. The LCD display will illuminate.

5.2 Navigating the Interface

The charger features an intuitive operation interface with buttons for navigation and selection. The LCD display shows real-time charging parameters.

UP2000-14S Intelligent Charger Can Support 4.50V Battery

Battery type: LiPo/LiHV (sustain: 4.20V/4.35V/4.40V/4.45V/4.50V)/Intelligent Battery



Two working modes, user-friendly

Balance Charging Mode: Users can select according to the mode, and the charger will automatically stop when it is full.

Storage Mode: Control the battery to the voltage state that is most suitable for long term storage to avoid battery failure due to prolonged non-use.

LCD Display Screen, Real-Time Charging Data, Clear At a Glance

3.2" high definition LCD display, the color of screen intelligently changes according to the charging status, clearly obtain the real-time charging data.



Image 5.1: Detailed view of the charger's operation buttons, LCD display screen, and battery connection ports.

5.3 Selecting Working Mode

The charger offers two primary working modes:

- **Balance Charge Mode:** This mode charges the battery to its full capacity while balancing the voltage of individual cells. Users can select this mode, and the charger will automatically stop when the battery is fully

charged.

- **Storage Mode:** This mode charges or discharges the battery to a specific voltage level suitable for long-term storage, preventing battery degradation due to prolonged full or empty states.

5.4 Adjusting Charging Current

Use the control buttons to select the desired charging current (5A, 10A, 15A, 20A, 25A, or 30A) based on your battery's specifications and recommended charge rate.

5.5 Starting and Stopping Charge

Press the 'Start/Stop' button to initiate the charging process. Press it again to stop charging at any time.

Safe to use avoid potential dangers



over-current
protection



over-voltage
protection



short-circuit
protection



over-heat
protection



reverse polarity
protection

Efficient, stable and reliable

After thousands of extreme tests, the software and hardware have been highly coordinated to deliver 100% of the charger's potential.

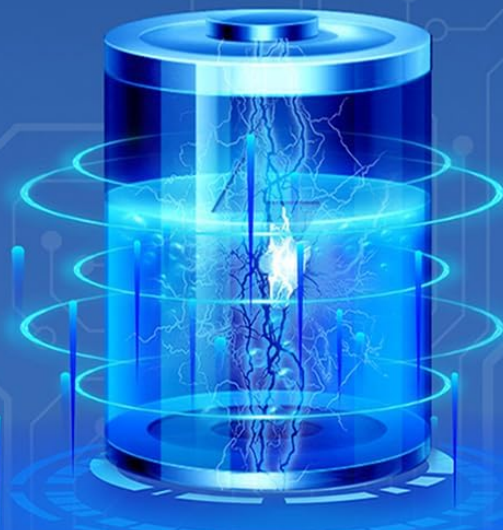


Image 5.2: The LCD display showing real-time charging data for two channels, including voltage, current, capacity, and charging time. It also illustrates the Balance Charging and Storage modes.

6. MAINTENANCE

- Keep the charger clean and free from dust. Use a dry, soft cloth for cleaning.
- Do not use abrasive cleaners or solvents.
- Ensure the cooling fans are not obstructed to maintain proper airflow.
- Store the charger in a cool, dry place when not in use.

7. TROUBLESHOOTING

- **Charger not powering on:** Check the power cord connection and ensure the power outlet is functional. Verify the power switch is in the 'ON' position.
- **Charging error displayed:** Check battery connections for correct polarity and secure fit. Ensure the battery type and cell count selected match the connected battery. Refer to the display for specific error codes if available.
- **Slow charging:** Verify the selected charging current is appropriate for your battery. Ensure the input power supply is stable.
- **Overheating:** Ensure the charger is in a well-ventilated area and cooling fans are not blocked. Reduce the charging current if necessary.

8. SPECIFICATIONS

Parameter	Value
Input Voltage	AC 100V-240V
Charge Power (AC 110V)	One Channel Output 1200W / Two Channels Output 600Wx2
Charge Power (AC 220V)	One Channel Output 1500W / Two Channels Output 1000Wx2
Charge Current	5A/10A/15A/20A/25A/30A
Discharge Power	140W (70Wx2)
Battery Type	LiPo / LiHV (4.20V/4.35V/4.40V/4.45V/4.50V) / Intelligent Battery
Balance Current	1.5A/cell Max.
Battery Cell Count	6-14S
Working Mode	Charge / Storage
Dimensions	256 x 200 x 140 mm (11"D x 6"W x 8"H)
Net Weight	4.6 KG

9. WARRANTY AND SUPPORT

This product comes with a **1-Year Manufacturer Warranty** from the date of purchase. This warranty covers defects in materials and workmanship under normal use.

The warranty does not cover damage caused by misuse, accident, unauthorized modification, or improper operation. Please retain your proof of purchase for warranty claims.

For technical support or warranty inquiries, please contact your retailer or the manufacturer's customer service.