



596.76532500

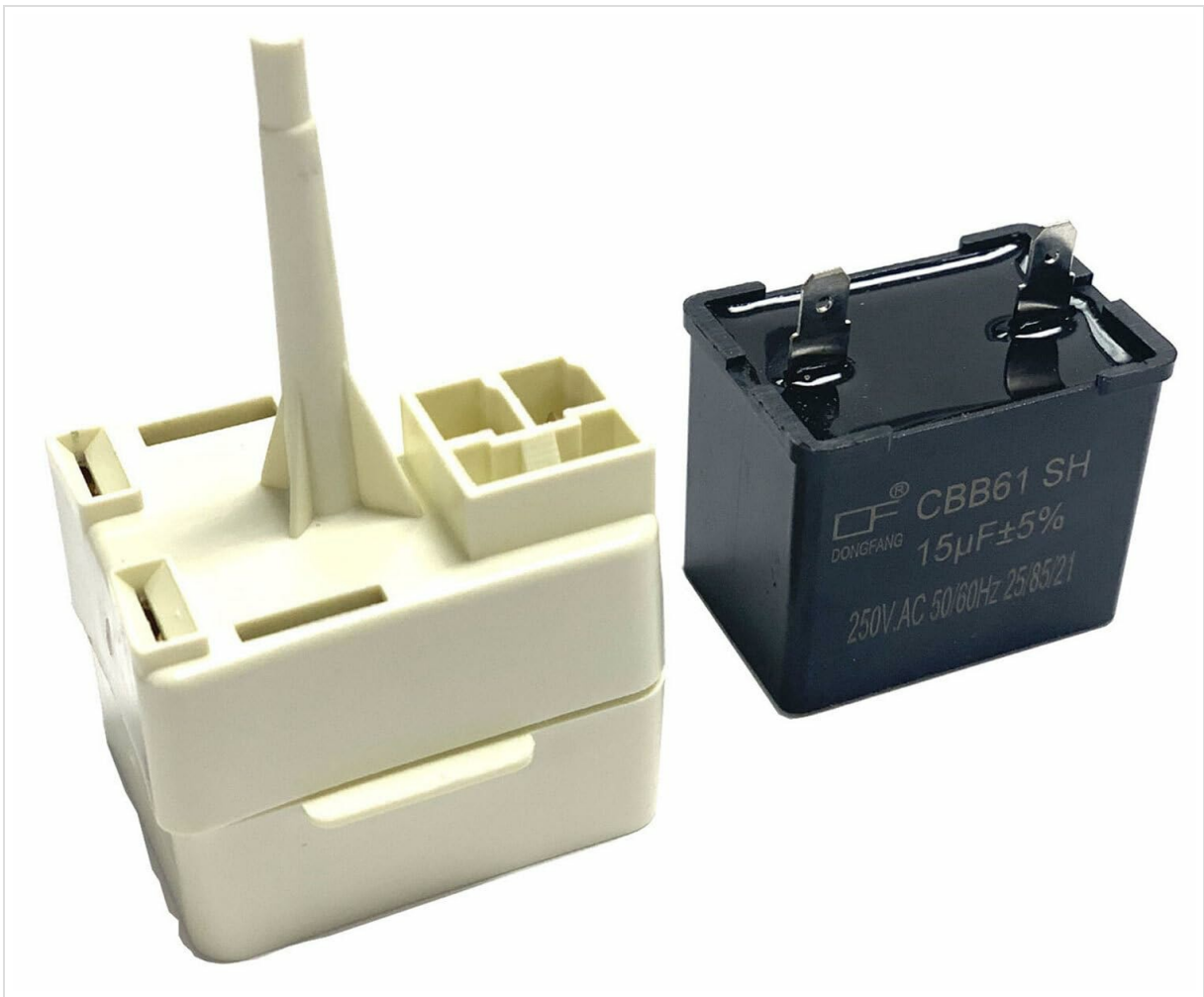
## Instruction Manual

### KENMORE 596.76532500 REFRIGERATOR START RELAY OVERLOAD CAPACITOR KIT

#### 1. Product Overview

---

This kit provides replacement components for the start relay, overload protector, and capacitor in Kenmore refrigerator model 596.76532500. These parts are crucial for the proper functioning of the refrigerator's compressor, enabling it to start and run efficiently. Replacing these components can resolve issues related to compressor starting failures or intermittent operation.



**Figure 1:** The Kenmore 596.76532500 Refrigerator Start Relay Overload Capacitor Kit. This image displays the two main components of the kit: a cream-colored start relay and a black rectangular overload capacitor. The relay has several connection points and a vertical plastic pin. The capacitor is labeled 'CBB61 SH 15µF±5% 250V.AC 50/60Hz'.

## 2. Compatibility

This replacement kit is specifically designed for Kenmore refrigerator model **596.76532500**. It is essential to verify your refrigerator's model number before installation to ensure proper fit and function. Appliance parts can appear similar across different models, but compatibility is critical for safe and effective operation. The part number for this kit is also **596.76532500**.

## 3. Installation and Setup

**Safety Warning:** Before attempting any installation or repair, always disconnect the refrigerator from its power source by unplugging it from the wall outlet. Failure to do so can result in electrical shock or serious injury.

Installation of this kit typically involves replacing the existing start relay, overload protector, and capacitor located near the compressor. Due to the electrical nature of these components and the potential for stored electrical charge in the capacitor, it is recommended that installation be performed by a qualified technician. If you choose to proceed, follow these general steps:

1. **Disconnect Power:** Unplug the refrigerator from the electrical outlet.
2. **Access Components:** Locate and remove the access panel at the back or bottom of the refrigerator to expose the compressor and its associated electrical components.
3. **Identify Parts:** Carefully identify the existing start relay, overload protector, and capacitor. Note their connections and orientation. Taking a photograph before disconnection can be helpful.

4. **Discharge Capacitor (if applicable):** If replacing a capacitor, ensure it is safely discharged before handling. Consult a professional if unsure.
5. **Remove Old Parts:** Disconnect the wiring and carefully remove the old start relay, overload, and capacitor.
6. **Install New Parts:** Connect the new start relay, overload, and capacitor in the same manner as the old ones. Ensure all connections are secure.
7. **Secure Access Panel:** Reattach the access panel.
8. **Restore Power:** Plug the refrigerator back into the electrical outlet.
9. **Test Operation:** Monitor the refrigerator to ensure the compressor starts and runs correctly.

Refer to your refrigerator's specific service manual for detailed, model-specific instructions.

## 4. Operation

---

The start relay, overload protector, and capacitor are internal components that facilitate the operation of the refrigerator's compressor. Once installed, they operate automatically as part of the refrigerator's cooling cycle. The start relay provides a temporary boost to help the compressor motor start, while the overload protector safeguards the compressor from overheating. The capacitor stores and releases electrical energy to assist in motor starting and running efficiency.

## 5. Maintenance

---

These components are generally maintenance-free once installed. Regular maintenance of the refrigerator, such as cleaning condenser coils and ensuring proper ventilation, can help prolong the life of all internal components, including the start relay kit. If the refrigerator exhibits symptoms of compressor starting issues again, these components may need to be re-inspected or replaced.

## 6. Troubleshooting

---

If your refrigerator is experiencing issues after replacing these parts, consider the following common troubleshooting steps:

- **Compressor Not Starting:** Ensure all electrical connections to the new relay, overload, and capacitor are secure and correctly wired. Verify that the refrigerator is receiving power.
- **Clicking Sound, No Start:** A clicking sound followed by no compressor start often indicates a faulty start relay or overload protector, or an issue with the compressor itself. If the new parts are correctly installed, the compressor may be the underlying problem.
- **Refrigerator Not Cooling:** If the compressor is running but the refrigerator is not cooling, the issue may lie with other components of the sealed system (e.g., refrigerant leak, evaporator fan) rather than the start relay kit.
- **Incorrect Part:** Double-check that the installed kit is indeed the correct replacement for Kenmore model 596.76532500.

For persistent issues, consult a professional appliance repair technician.

## 7. Specifications

---

Component	Description
Product Type	Refrigerator Start Relay Overload Capacitor Kit
Compatible Model	Kenmore 596.76532500
Part Number	596.76532500
Capacitor Rating	15 $\mu$ F $\pm$ 5% 250V.AC 50/60Hz (as labeled on component)
Manufacturer	Fricparts (Generic)

## 8. Warranty and Support

---

As this is a replacement part, warranty coverage is typically provided by the seller or manufacturer of the specific replacement kit. Please refer to your purchase documentation or contact the seller (Frigore) directly for information regarding warranty terms, return policies, and technical support. Keep your proof of purchase for any warranty claims.