

Ulefone Armor X16

Ulefone Armor X16 Rugged Smartphone User Manual

Model: Armor X16

Brand: Ulefone

1. INTRODUCTION

This manual provides essential information for the proper use and maintenance of your Ulefone Armor X16 Rugged Smartphone. Please read it thoroughly before operating your device.

1.1 Package Contents

- 1x Ulefone Armor X16 Rugged Phone
- 1x AC Power Charger (33W)
- 1x Type-C to Type-C Data Cable (100cm)
- 1x Protective Film (Pre-installed)
- 1x Tempered Glass Screen Protector
- 1x SIM Needle
- 1x Lanyard
- 1x Multi-language User Manual



Figure 1: Ulefone Armor X16 Rugged Smartphone and included accessories.

2. SETUP

2.1 Inserting SIM and MicroSD Cards

The Ulefone Armor X16 supports a 3-card slot configuration (Nano-SIM + Nano-SIM + microSD) for simultaneous use. To insert the cards:

1. Locate the SIM card tray on the side of the device.
2. Use the provided SIM needle to gently eject the tray.
3. Place your Nano-SIM cards and microSD card into their respective slots on the tray. Ensure they are correctly oriented.
4. Carefully reinsert the tray into the phone until it is flush with the device body.

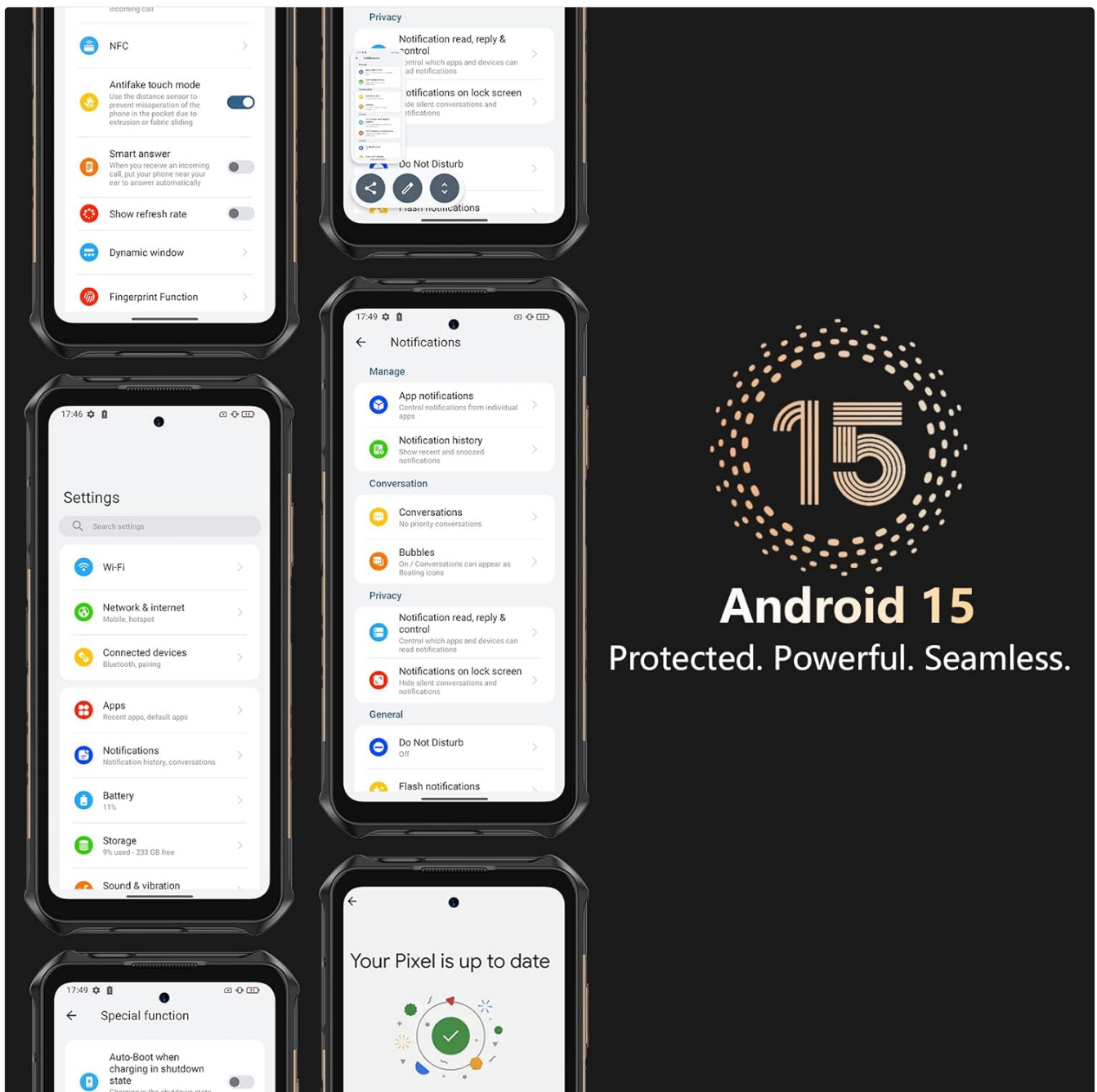


Figure 2: Side view of the device showing the SIM card tray.

Video 1: Ulefone Armor X16 Unboxing, demonstrating SIM card insertion and initial setup steps.

2.2 Initial Power On

Press and hold the Power button located on the side of the device until the Ulefone logo appears. Follow the on-screen prompts to complete the initial setup, including language selection, Wi-Fi connection, and Google account setup.

3. OPERATING YOUR DEVICE

3.1 Display Features

The Armor X16 features a 6.56-inch Fluid Display with 720 x 1612 resolution and a 90Hz refresh rate. It offers up to 910 nits maximum brightness for improved outdoor visibility. The display is protected by Corning Gorilla Glass 5, providing enhanced durability against drops and scratches. Widevine L1 certification allows for high-definition streaming on platforms such as Amazon Prime Video and Netflix.

6.56" 90Hz Gaming Display



**6.56-inch**
Large Display

**720 x 1612**
Resolutions

**90 Hz**
High Refresh Rate

**910 nits**
Max Brightness

Corning Gorilla Glass 5

4X Stronger than Glass 4



Widevine L1 Certified

Access HD Videos on Netflix, Disney+



Figure 3: Key features of the Ulefone Armor X16 display.

3.2 Battery and Charging

The device is equipped with a 10360mAh battery, offering extended usage times: up to 555 hours standby, 56 hours talk time, 42 hours music playback, and 13 hours video playback. It supports 33W PD fast charging.



Figure 4: Battery capacity and charging speed.

3.3 Camera Features

The Armor X16 features a versatile camera system:

- **48MP Main Camera:** Utilizes an OV48B sensor with an f/1.9 aperture for clear images.
- **20MP Infrared Night Vision Camera:** Equipped with a Sony IMX350 sensor and f/1.8 lens, enhanced by the Ulefone NightElf 2.0 algorithm for visibility in complete darkness.
- **2MP Macro Camera:** For close-up photography of small objects.
- **16MP Front Camera:** Suitable for selfies and video calls.
- **Underwater Camera Mode:** Allows for photography and videography underwater.



Figure 5: Overview of the device's multi-camera setup.

3.4 AI Features

The device integrates Google Gemini as an AI assistant for queries, brainstorming, and real-time assistance. An AI Recorder is also included, designed to capture voice and video calls, providing instant transcripts and summaries, particularly useful for meetings. *Note: Third-party app audio recording functionality depends on the app's features and permissions.*

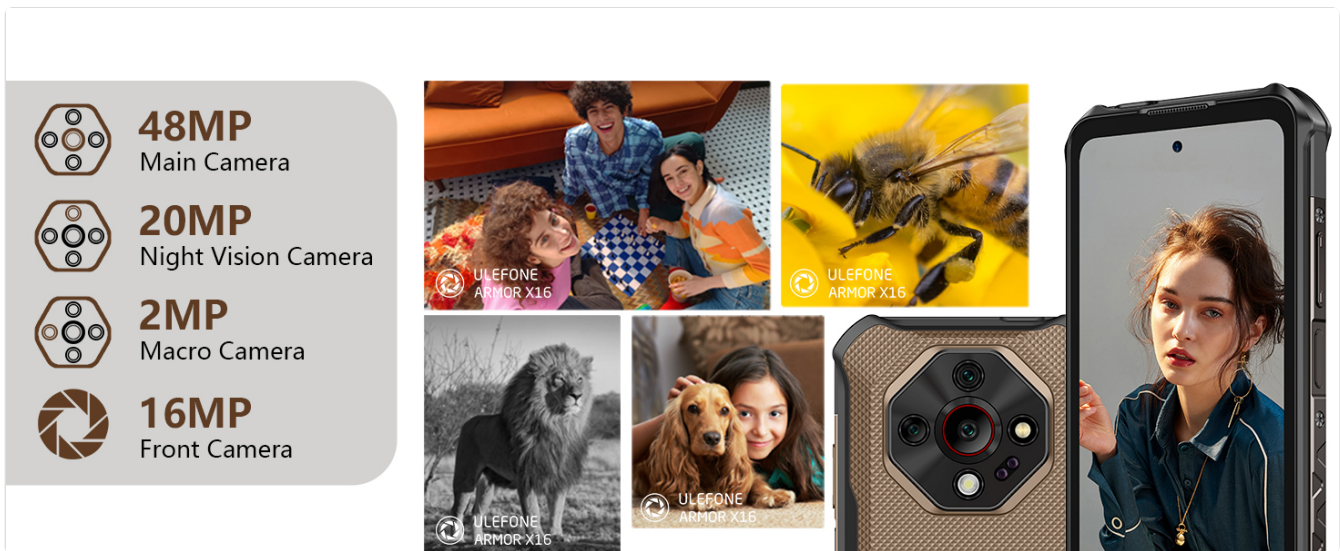


Figure 6: Google Gemini and AI Recorder in action.

3.5 Connectivity

The Ulefone Armor X16 supports dual 4G global networks (FDD-LTE: B1/2/3/4/5/7/8/12/13/17/18/19/20/25/26/28A/28B/32/66/71; TDD-LTE: B34/38/39/40/41; WCDMA: B1/2/4/5/6/8/19; GSM: B2/3/5/8; CDMA: BC0/BC1/BC10). It also includes Bluetooth 5.2, NFC for mobile payments, and comprehensive GPS (GPS+GLONASS+BEIDOU+Galileo+QZSS) for accurate navigation.

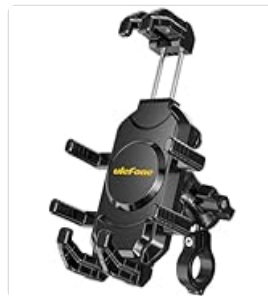


Figure 7: NFC and Google Pay features.

3.6 Special Features

- **Custom Key:** A programmable side button for quick access to specific functions.
- **3.5mm Headphone Jack:** For wired audio connectivity.
- **Face Unlock + Fingerprint ID:** Multiple biometric security options.
- **Gloves Mode:** Enhances touch sensitivity for use with gloves.
- **IR Blaster:** Allows the device to function as a universal remote control.
- **Headset-free FM:** Enables FM radio listening without requiring a headset as an antenna.
- **Built-in Flashlight:** A separate flashlight with 133 lumens brightness, adjustable via the quick-setting menu.

Caution: Do not stare directly into the flashlight.



Figure 8: Flashlight, Face Unlock, and Gloves Mode.



Figure 9: Custom Key and other utility features.

4. DURABILITY AND PROTECTION

4.1 Rugged Design

The Ulefone Armor X16 is built to withstand harsh environments, boasting IP69K, IP68, and MIL-STD-810H certifications. This ensures resistance to high-pressure water jets, submersion in water up to 2 meters for 30 minutes,

dust ingress, and drops.



Figure 10: Device showcasing its rugged certifications.

Video 2: Official Ulefone Armor X16 Rugged Phone overview, highlighting its durability and features.

5. MAINTENANCE

5.1 Cleaning Your Device

Due to its rugged and waterproof design, the Armor X16 can be cleaned with water. Use a soft cloth to wipe down the device. Ensure all port covers are securely closed before exposing the device to water.

5.2 Software Updates

Your device runs on Android 15, which includes features like advanced theft detection and Private Space for data security. Regularly check for and install system updates to ensure optimal performance, security, and access to the latest features. Updates can typically be found in **Settings > System > System update**

6. TROUBLESHOOTING

6.1 Common Issues and Solutions

- **Device is slow or unresponsive:** Close unused applications, clear cache, or restart the device. If issues persist, consider a factory reset (back up your data first).
- **Network connectivity problems:** Ensure SIM cards are correctly inserted. Check network settings (Settings > Network & internet). Restart the device or contact your service provider.
- **Battery drains quickly:** Reduce screen brightness, disable unnecessary features (Wi-Fi, Bluetooth, GPS) when not in use, and limit background app activity.
- **Camera quality not as expected:** Ensure lenses are clean. Check lighting conditions. For night vision, ensure sufficient darkness for optimal performance.
- **Difficulty with TalkBack or accessibility features:** If you encounter issues during setup or daily use, consult the Android accessibility settings or Ulefone's official support resources for detailed guidance.

7. SPECIFICATIONS

Feature	Specification
Model Name	Armor X16
Operating System	Android 15.0
CPU Model	MediaTek Helio G91
CPU Speed	2 GHz
RAM Memory Installed Size	12 GB (6GB RAM + 6GB Dynamic RAM)
Memory Storage Capacity	128 GB (Expandable to 2TB via microSD)
Screen Size	6.56 Inches
Resolution	720 x 1612
Refresh Rate	90 Hz
Battery Capacity	10360 Milliamp Hours
Phone Talk Time	56 Hours
Main Camera	48MP
Night Vision Camera	20MP
Macro Camera	2MP
Front Camera	16MP
Connectivity Technologies	Bluetooth, Infrared, NFC, USB, Wi-Fi
GPS	GPS+GLONASS+BEIDOU+Galileo+QZSS
Audio Jack	3.5 mm
Product Dimensions	6.81 x 3.27 x 0.67 inches

Item Weight

13.9 ounces (394 Grams)

8. WARRANTY AND SUPPORT



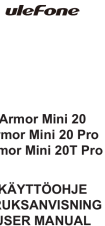


8.1 Warranty Information

Please refer to the Warranty Card included in your product package for detailed information regarding warranty coverage and terms. Keep your proof of purchase for warranty claims.

8.2 Customer Support

For further assistance, technical support, or inquiries, please visit the official Ulefone website or contact their customer service department. Contact details can typically be found in the included user manual or on the Ulefone support page.

Related Documents - Armor X16

	<p>Ulefone Power Armor 19 User Manual - Rugged Smartphone Guide</p> <p>Official user manual for the Ulefone Power Armor 19 rugged smartphone. Learn about installation, features, network bands, safety precautions, FCC/CE compliance, and more.</p>
	<p>Ulefone Armor Mini 20 Pro Series User Manual</p> <p>Comprehensive user manual for the Ulefone Armor Mini 20 Pro Series, covering setup, features, safety information, and troubleshooting.</p>
	<p>Ulefone Armor Mini 20 Series User Manual</p> <p>Comprehensive user manual for the Ulefone Armor Mini 20, Armor Mini 20 Pro, and Armor Mini 20T Pro smartphones, covering safety instructions, features, operation, and specifications.</p>
	<p>Ulefone Armor X8i Rugged Smartphone - Specifications and Features</p> <p>Detailed specifications and features of the Ulefone Armor X8i rugged smartphone, including its MediaTek processor, 3GB RAM, 32GB storage, 5.7-inch HD+ screen, 5080mAh battery, and IP68/IP69K rating.</p>
	<p>Ulefone Armor 3 User Manual: Features, Setup, and Safety Guide</p> <p>Comprehensive user manual for the Ulefone Armor 3 rugged smartphone. Learn about installation, device features, basic operations, and essential safety precautions.</p>

uleFone

Armor X16 Pro

**KÄYTTÖOHJE
BRUKSANVISNING
USER MANUAL**

1

[Ulefone Armor X16 Pro User Manual](#)

Comprehensive user manual for the Ulefone Armor X16 Pro smartphone, detailing safety instructions, features, specifications, and operational guidance.