

Manuals.plus /

- › EDJO /
- › EDJO K399 Ergonomic Wireless Keyboard User Manual

EDJO K399

EDJO K399 Ergonomic Wireless Keyboard User Manual

Model: K399

1. INTRODUCTION

The EDJO K399 Ergonomic Wireless Keyboard is designed to provide a comfortable and efficient typing experience. Its wave-shaped key layout and integrated wrist rest aim to reduce strain during extended use. This keyboard features 2.4GHz wireless connectivity and is compatible with both Mac and Windows operating systems.



Image 1.1: The EDJO K399 Ergonomic Wireless Keyboard, showcasing its curved design and integrated wrist rest.

2. PACKAGE CONTENTS

Please verify that all items are present in your package:

- 1 x EDJO K399 Wireless Keyboard
- 1 x USB Receiver

3. SETUP INSTRUCTIONS

Follow these steps to set up your EDJO K399 Wireless Keyboard:

1. **Install Batteries:** Open the battery compartment on the underside of the keyboard. Insert the required batteries (not included, typically AA or AAA) according to the polarity indicators.
2. **Locate USB Receiver:** The USB receiver is stored in a dedicated slot within the keyboard's battery compartment for safekeeping. Carefully remove it.
3. **Connect USB Receiver:** Plug the USB receiver into an available USB-A port on your computer, laptop, or compatible device.
4. **Power On Keyboard:** Locate the power switch on the keyboard (usually on the top right or underside) and slide it to the 'ON' position. The keyboard should automatically connect to your device.

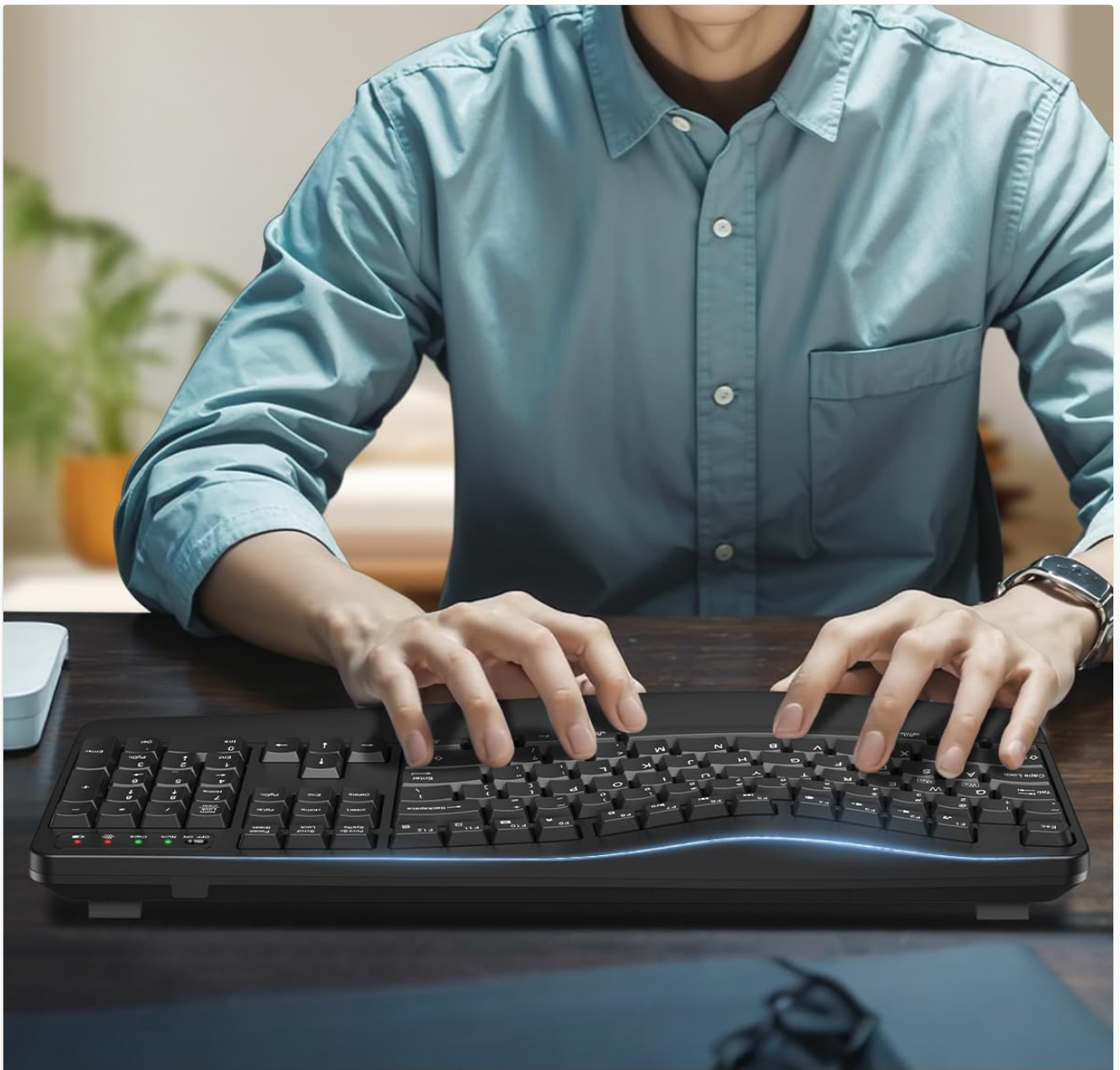


Image 3.1: Illustration showing the USB receiver stored in the battery compartment and icons for 2.4G connection, 33ft wireless range, and compatibility with Windows, Mac OS, Linux, and Chrome OS.

4. OPERATING INSTRUCTIONS

4.1 Basic Typing and Ergonomic Design

The EDJO K399 features a wave-shaped key layout and an integrated palm rest to promote a natural typing posture and reduce wrist and hand strain. The keys are designed with a crater mechanism for accurate and responsive feedback.



CURVED ERGO STRUCTURE

Promotes Natural Typing Posture
And Reduces Typing Muscle Fatigue

Image 4.1: A user demonstrating natural typing posture on the EDJO K399 keyboard, highlighting its curved ergonomic structure.



Image 4.2: The wide palm rest and foldable stand of the EDJO K399 keyboard, designed for increased comfort and reduced wrist fatigue. The foldable stand allows for adjustable tilt angles (8° and 12°).

4.2 Multimedia Shortcut Keys

The keyboard includes 12 combined multimedia keys for quick access to various functions:

- F1: Music
- F2: Volume Down
- F3: Volume Up

- F4: Mute
- F5: Previous Track
- F6: Next Track
- F7: Play/Pause
- F8: Stop
- F9: Browser
- F10: Email
- F11: My Computer
- F12: Calculator



Image 4.3: Visual representation of the 12 combined multimedia keys and their functions.

4.3 System Layout Switching (Mac/Windows)

The EDJO K399 keyboard supports dual system layouts for Mac and Windows. You can switch between them with a single touch:

- **For Windows:** Press the **Fn + Q** keys simultaneously. The Win/Mac indicator light will turn red.
- **For Mac OS:** Press the **Fn + W** keys simultaneously. The Win/Mac indicator light will turn green.

MAC OS + WINDOWS LAYOUT



WINDOWS: Press **Fn+Q** Key
Activate: Win, Alt, Num Lock
The Win/Mac Light Will Turn **Red**



MAC OS: Press **Fn+W** Key
Activate: option, cmd, clear
The Win/Mac Light Will Turn **Green**



Image 4.4: Instructions for switching between Windows (Fn+Q, red light) and Mac OS (Fn+W, green light) layouts.

4.4 Indicator Lights

The keyboard features several LED indicator lights:

- **Low Power Indicator:** Illuminates when battery power is low.
- **Mac OS & Windows Indicator:** Shows current operating system layout (Red for Windows, Green for Mac).
- **Caps Lock Indicator:** Illuminates when Caps Lock is active.
- **Num Lock Indicator:** Illuminates when Num Lock is active.

12 COMBINED MULTIMEDIA KEYS

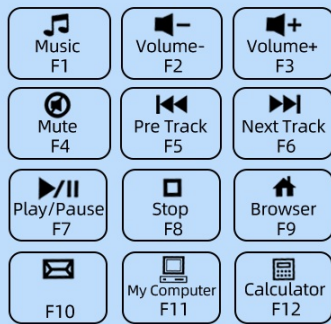


Image 4.5: Close-up view of the keyboard's indicator lights, including Low Power, Mac OS & Windows, Caps Lock, and Num Lock.

5. MAINTENANCE

5.1 Cleaning

To clean your keyboard, use a soft, lint-free cloth slightly dampened with water or a mild cleaning solution. Avoid excessive moisture. Do not immerse the keyboard in liquid. The keyboard is designed to be spill-resistant, but it is not waterproof.

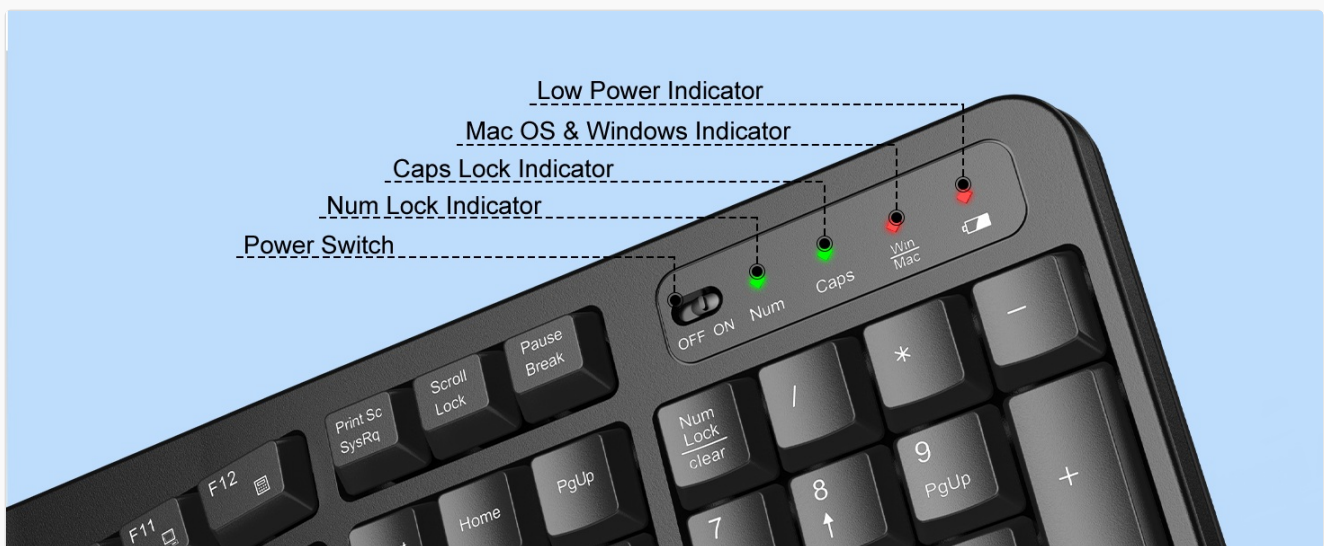


Image 5.1: The EDJO K399 keyboard demonstrating its spill-resistant properties, made from scratch-resistant ABS material with a stable double-sided PCB board and non-fading keycap letters.

5.2 Battery Replacement

When the low power indicator light illuminates, replace the batteries promptly to ensure uninterrupted operation.

6. TROUBLESHOOTING

- **Keyboard not responding:**
 - Ensure the keyboard is powered on.
 - Check battery levels and replace if necessary.

- Verify the USB receiver is securely plugged into a working USB port.
- Try plugging the USB receiver into a different USB port.
- Restart your computer.
- **Lag or intermittent connection:**
 - Ensure the keyboard is within the 33ft wireless range of the USB receiver.
 - Minimize obstructions between the keyboard and the receiver.
 - Avoid placing the receiver near other wireless devices that may cause interference.
- **Keys not typing correctly (e.g., 'Z' types 'Y'):**
 - Ensure the correct system layout (Mac or Windows) is selected using Fn+Q or Fn+W.

7. SPECIFICATIONS

Feature	Detail
Model Number	K399
Brand	EDJO
Connectivity Technology	2.4GHz Wireless (USB-A Receiver)
Wireless Range	Up to 33 feet (10 meters)
Keyboard Description	Membrane
Compatible Devices	Laptop, PC, Smart TV (Windows, Mac OS, Linux, Chrome OS)
Special Features	Ergonomic Design, Wave Keys, Integrated Wrist Rest, Adjustable Tilt, 12 Multimedia Keys, Spill-Resistant
Product Dimensions	17.6 x 8.7 x 1.4 inches (44.7 x 22.1 x 3.6 cm)
Item Weight	1.65 pounds (0.75 kg)
Material	Plastic (ABS)
Color	Black

8. WARRANTY AND SUPPORT

EDJO is committed to providing quality products and customer satisfaction. For any inquiries, issues, or technical assistance, please contact our dedicated support team.

- **Customer Service:** Our team is available to provide expert assistance.
- **Response Time:** Expect a reply within 24 hours.
- **Replacement Policy:** 365-day replacement for eligible issues.
- **Technical Support:** Lifetime technical support is provided.

To contact support, please refer to your purchase platform or the EDJO official website for contact details.



Image 8.1: EDJO customer support information, highlighting various support services available.