

Pinailon B0F9WPSK2R

Pinailon 5-in-1 Smart Dynamic Cupping Therapy Massager (Model B0F9WPSK2R) Instruction Manual

Comprehensive guide for safe and effective use of your cupping therapy device.

[Product Overview](#) [Safety Information](#) [Package Contents](#) [Setup](#) [Operating](#)
[Instructions](#) [Modes & Levels](#) [Maintenance](#) [Troubleshooting](#) [Specifications](#) [Warranty & Support](#)

PRODUCT OVERVIEW

The Pinailon 5-in-1 Smart Dynamic Cupping Therapy Massager (Model B0F9WPSK2R) is an advanced device designed for personal massage therapy. It integrates multiple functions to provide a comprehensive wellness experience, targeting muscle pain, knots, and soreness. This device offers adjustable suction, heat, and red light therapy for effective relief and improved circulation.

- **5-in-1 Functionality:** Combines cupping, dynamic cupping, red light therapy, heat therapy, and cellulite reduction.
- **Adjustable Settings:** Features 12 levels of suction and heating for personalized intensity.
- **Red Light Therapy:** Utilizes red light to support muscle recovery and circulation.
- **Portable Design:** Lightweight, compact, and rechargeable for convenient use at home, gym, or while traveling.
- **Safety Features:** Includes a built-in 15-minute timer for safe and effective sessions.

IMPORTANT SAFETY INFORMATION

Please read all safety warnings and instructions carefully before using this product. Failure to follow these instructions may result in electric shock, fire, or serious injury.

General Precautions:

- Do not use on broken skin, open wounds, or areas with poor blood circulation.
- Avoid use over eyes, mucous membranes, or sensitive areas.
- Do not use for more than 15 minutes continuously on a single area. Beginners should limit use to 3 minutes per area.
- Keep out of reach of children.
- Consult a healthcare professional before use if you have any medical conditions, are pregnant, or have a pacemaker.
- Discontinue use immediately if you experience discomfort, pain, or adverse reactions.

Legal Disclaimer:

Statements regarding this product have not been evaluated by the FDA and are not intended to diagnose, treat, cure, or prevent any disease or health condition. This product is for personal wellness and relaxation purposes only.

PACKAGE CONTENTS

Verify that all items are present and in good condition upon opening the package.

- Cupping Massage Device x 1
- Cupping Cup x 2 (different sizes)
- Guasha Cup x 1
- USB-C Charging Cable x 1
- User Manual x 1



Image: Pinailon 5-in-1 Smart Dynamic Cupping Therapy Massager and its included accessories.

This image displays the main cupping device along with two additional cupping cups of varying sizes, a Guasha cup, a USB-C charging cable, and the user manual, all neatly arranged as they would appear in the product packaging.

SETUP GUIDE

1. Charging the Device:

1. Before first use, fully charge the device using the provided USB-C cable.
2. Connect the USB-C cable to the charging port on the device and the other end to a compatible USB power adapter (not included).
3. The indicator light will show charging status and turn solid when fully charged.

2. Attaching the Cupping Cup:

1. Select the desired cupping cup size (small, medium, or Guasha) based on the treatment area.
2. Align the cup with the main unit and twist it clockwise until it locks securely into place.
3. Ensure the cup is firmly attached to prevent air leakage during operation.

OPERATING INSTRUCTIONS

Follow these steps for a safe and effective cupping session.

1. **Prepare Skin:** Cleanse the skin area where you intend to apply the device. For best results and to ensure a good seal, apply a small amount of massage oil or lotion to the skin.
2. **Power On:** Press and hold the "On" button (usually indicated by a power symbol) on the device for 1.5 seconds to turn it on. The LED display will illuminate.
3. **Select Mode/Settings:**
 - Use the temperature adjustment button (often indicated by wavy lines) to select your desired heat level (1-12).
 - Use the suction strength button (often indicated by up/down arrows or a wave symbol) to select your desired suction level (1-12).
 - The device may have different modes (e.g., continuous suction, dynamic breathing cupping). Refer to the user manual for specific mode selection.
4. **Apply to Skin:** Place the cupping cup firmly onto the desired treatment area, ensuring full contact with the skin to create a seal.
5. **Start Therapy:** The device will automatically begin the selected therapy mode. Monitor the sensation and adjust settings as needed.
6. **Duration:** The device has a built-in 15-minute timer and will automatically shut off. For beginners, do not exceed 3 minutes on any single area.
7. **Release Suction:** To release the suction at any time, press the quick-release button (often indicated by a bell or unlock symbol). This will immediately release the pressure.

8. **Power Off:** After your session, press and hold the "On" button to turn off the device.

Image: Detailed view of the device's control panel, highlighting the various buttons and LED display for easy operation.

The control panel features clearly labeled buttons for adjusting temperature, suction, and a quick-release function. The central LED display shows the current settings.



Image: Visual guide demonstrating the five simple steps to operate the cupping device, from powering on to releasing suction.

This image illustrates the user-friendly process: 1. Press and hold "On" button. 2. Press temperature adjustment. 3. Place cup on skin and press gently. 4. Massage for 3-5 minutes, then press pressure release. 5. Press and hold "On" button to turn off.

MODES AND LEVELS

The Pinailon Smart Dynamic Cupping Therapy Massager offers a range of customizable settings to suit your needs.

Suction Levels (1-12):

- Adjust the suction intensity from level 1 (gentle) to level 12 (strong) to match your comfort and therapeutic requirements.
- Lower levels are ideal for relaxation and sensitive areas, while higher levels provide deeper tissue massage.

Heat Levels (1-12):

- The device features advanced PI conductive heating technology with a temperature range of 38°C to 50°C (100.4°F to 122°F).
- Levels 1-6 (35°C-45°C) offer comfortable relaxation.
- Levels 7-9 (45°C-50°C) provide soothing warmth.
- Levels 10-12 (50°C-60°C) are for deep tissue therapy.
- Heat therapy helps to break down lactic acid in muscles and relieve pain.

Red Light Therapy:

- Integrated red light therapy works in conjunction with cupping to promote blood circulation and aid in muscle recovery.

Dynamic Cupping:

- This mode provides alternating suction and release, mimicking traditional cupping movements for enhanced therapeutic effect.



Image: Visual representation of how red light and heat therapy work together to relieve deep muscle tension and stimulate blood flow.

This diagram illustrates the internal workings of the device, showing how the red light and heat penetrate the skin to improve circulation and reduce muscle tension, with different temperature ranges for various levels of therapy.



Image: A comparison chart detailing the advantages of the Pinailon intelligent cupping machine over traditional cupping methods, including adjustable heating and suction levels, red light therapy, and an auto-shutoff timer.

This image clearly outlines the superior features of the Pinailon device, such as 12 adjustable heating levels, 12 adjustable suction levels, red light therapy, heat therapy, an auto-shutoff timer, and 3 sizes of cups, all of which are absent in traditional cupping.

CARE AND MAINTENANCE

Proper care ensures the longevity and hygiene of your cupping device.

- **Cleaning:** After each use, detach the cupping cup from the main unit. Wipe the cup and the contact surface of the main unit with a soft, damp cloth or an alcohol wipe. Ensure no liquid enters the main unit's charging port or buttons.
- **Drying:** Allow all parts to air dry completely before reassembling or storing.
- **Storage:** Store the device in a cool, dry place away from direct sunlight and extreme temperatures. Keep it in its original packaging or a protective case to prevent damage.
- **Battery Care:** To maintain battery health, charge the device regularly, even if not in frequent use. Avoid completely draining the battery before recharging.

TROUBLESHOOTING

If you encounter any issues with your device, refer to the following common problems and solutions.

Problem	Possible Cause	Solution
Device does not turn on.	Low battery or device not charged.	Charge the device fully using the provided USB-C cable. Ensure the charging cable and adapter are working correctly.
Weak or no suction.	Improperly attached cup, air leakage, or dry skin.	Ensure the cupping cup is securely twisted onto the main unit. Apply massage oil or lotion to the skin to create a better seal. Check for any cracks or damage to the cup.

Problem	Possible Cause	Solution
Device stops unexpectedly.	15-minute auto-shutoff activated or low battery.	This is a safety feature; the device will turn off after 15 minutes. If it stops before, check the battery level and recharge if necessary.
Heat function not working.	Heat setting is too low or device malfunction.	Increase the heat level using the temperature adjustment button. If the issue persists, contact customer support.

PRODUCT SPECIFICATIONS

- **Product Dimensions:** 5.3 x 3.4 x 7 inches
- **Item Weight:** 0.85 Pounds (13.6 ounces)
- **Batteries:** 1 Nonstandard Battery (included)
- **Power Source:** Battery Powered
- **Material:** Plastic
- **Brand:** Pinailon
- **Model (ASIN):** B0F9WPSK2R
- **Manufacturer:** Pinailon
- **Temperature Range:** 38°C to 50°C (100.4°F to 122°F)
- **Suction Levels:** 12 levels
- **Heat Levels:** 12 levels
- **Timer:** Built-in 15-minute auto-shutoff

WARRANTY AND CUSTOMER SUPPORT

For warranty information, technical assistance, or customer service inquiries, please refer to the contact details provided in your product packaging or visit the official Pinailon website.

Customer Service:

- Email: support@protoco.us
- Tel 1: +1 6264203418 (U.S.) Mon-Fri: 9:00-17:00 (PST)
- Tel 2: +1 6264203417 (U.S.) Mon-Fri: 17:00-24:00 (PST)

VISUAL AIDS AND DEMONSTRATIONS

Product in Use:



5-IN-1

**SMART CUPPING
THERAPY MASSAGER**

- 

Red light therapy
- 

Dynamic suction
- 

Heater therapy
- 

Cupping
- 

Cellulite remove

Image: The Pinailon 5-in-1 Smart Dynamic Cupping Therapy Massager in its red variant, showcasing its sleek design.

This image provides a clear view of the main cupping device, highlighting its compact and ergonomic design in a vibrant red color.

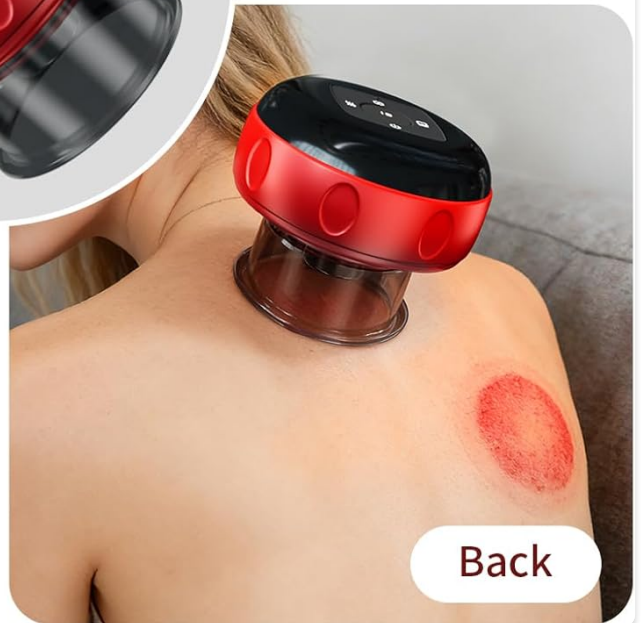
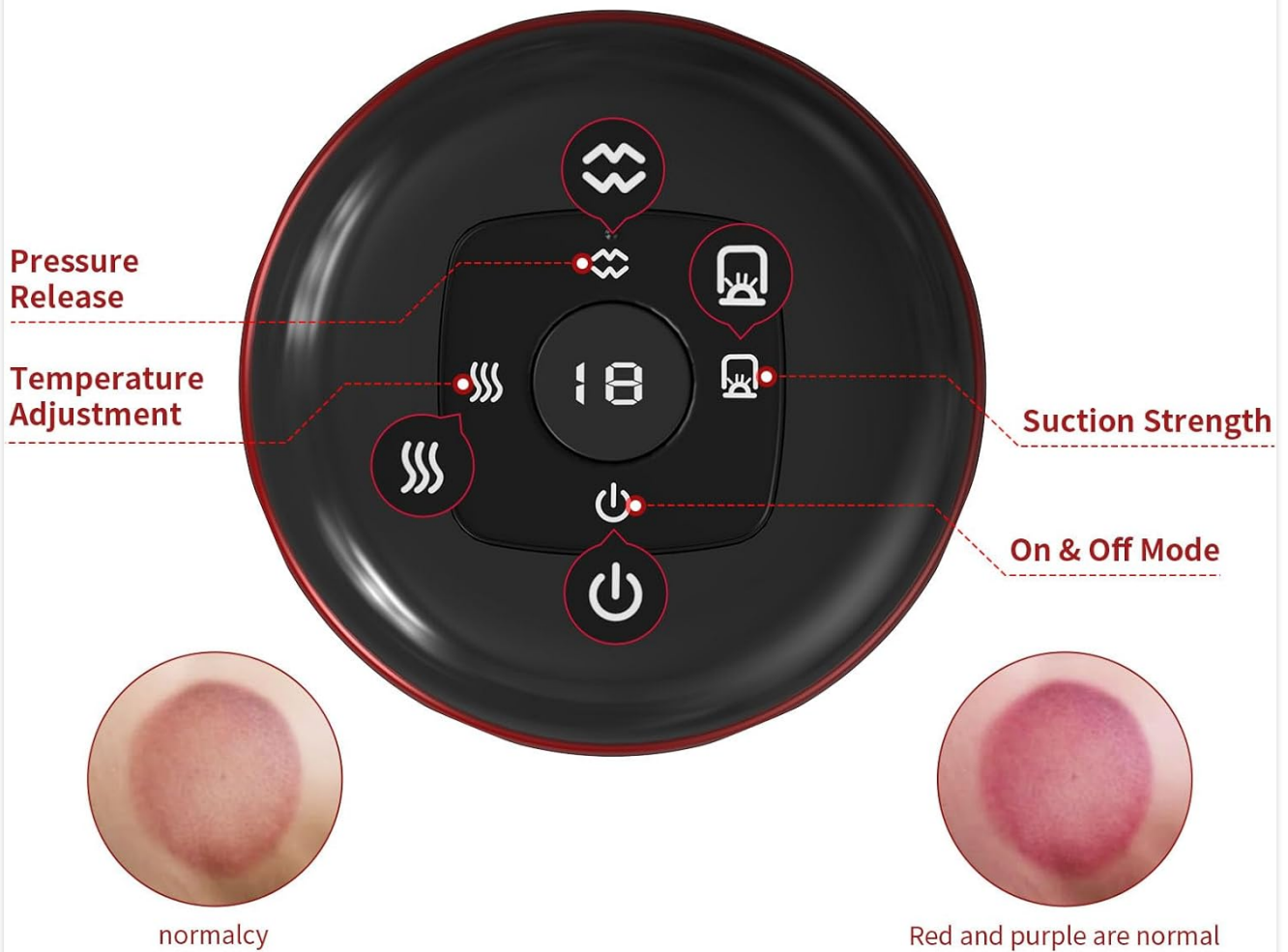


Image: The cupping device applied to a person's shoulder, demonstrating the suction and how it lifts the skin for therapy. This image shows the device actively engaged on a user's shoulder, illustrating the visible effect of the cupping suction on the skin.

LED display and remote control



The initial time for use should be limited to 3 to 5 minutes.

Image: The cupping device applied to a person's thigh, demonstrating its versatility for use on larger muscle groups. This image captures the device in action on a user's thigh, highlighting its adaptability for various body parts and the resulting skin lift.

Portable Cupping Therapy Device

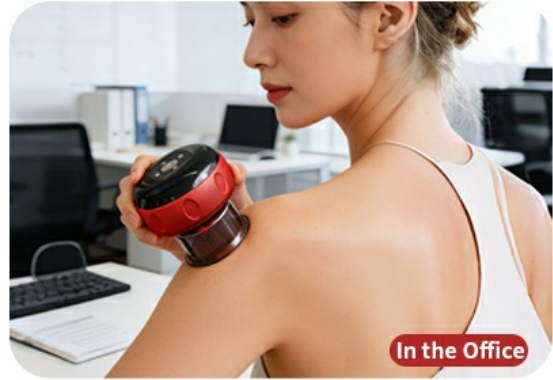


Image: A collage showcasing the portable nature of the cupping device, with scenes of it being used comfortably at home, in an office setting, and during a gym workout.

This visual demonstrates the device's versatility and portability, allowing users to enjoy cupping therapy in various environments, from the comfort of their home to a professional setting or during exercise.

Official Product Videos:

Your browser does not support the video tag.

Video: UBALANCE Cupping Kit for Massage Therapy. This video demonstrates the unboxing and basic operation of a similar cupping device, showing its components and how to attach the cups.

This video provides a visual guide to the unboxing experience and initial setup of a cupping kit, including how to handle the device and its various cups.

Your browser does not support the video tag.

Video: Cupping Kit for Massage Therapy. This video shows the device being used on a leg, demonstrating the suction and release functions.

This video illustrates the practical application of the cupping device on a leg, showcasing the suction and release mechanism in real-time.

Your browser does not support the video tag.

Video: Smart Dynamic Cupping Therapy Set. This video highlights the smart dynamic features of the cupping therapy set, showing its application and benefits.

This video demonstrates the smart dynamic cupping features, providing a visual overview of how the device operates and its therapeutic effects.

Your browser does not support the video tag.

Video: Tisscare Intelligent Breathing Cupping Massage Instrument. This video offers a detailed review and demonstration of the intelligent breathing cupping massage instrument, including its various settings and application.

This video provides an in-depth look at the intelligent breathing cupping massage instrument, covering its features, how to adjust settings, and practical usage.

© 2026 Pinailon. All rights reserved.
For further assistance, please contact customer support.