

## Feelfunn FWC002-20BL-USZX

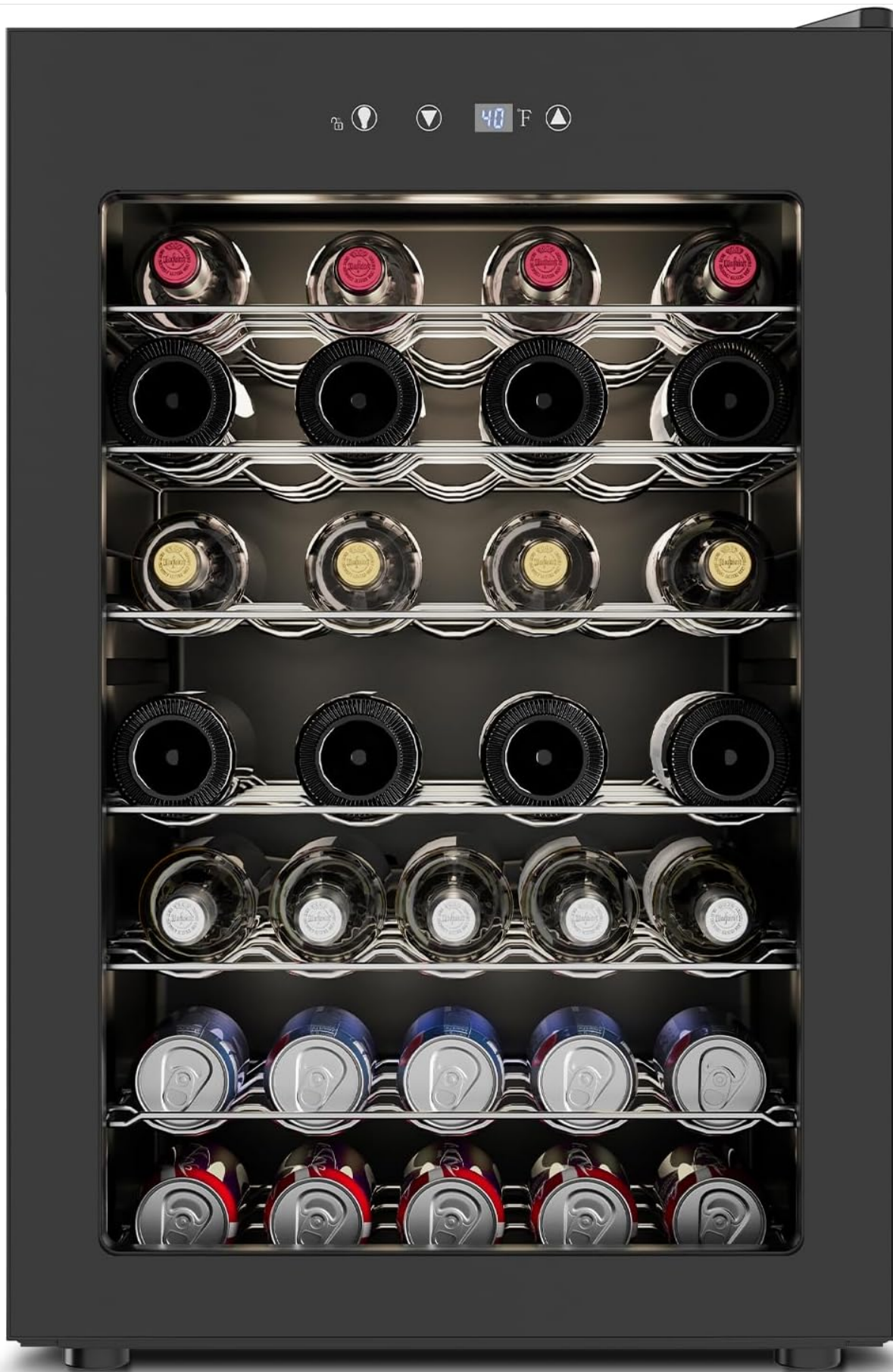
# Feelfunn 45-Bottle Mini Wine Cooler Refrigerator - Instruction Manual

Model: FWC002-20BL-USZX

## 1. INTRODUCTION

Thank you for choosing the Feelfunn 45-Bottle Mini Wine Cooler Refrigerator. This appliance is designed to provide optimal storage conditions for your wine and beverages, ensuring they are kept at their ideal serving temperatures. Please read this manual thoroughly before installation and operation to ensure proper use and maintenance.

Key features include a compact design with a large capacity, precise temperature control, a stylish double-layer glass door, quiet operation, and energy efficiency.



*Image: The Feelfunn 45-Bottle Mini Wine Cooler Refrigerator. The black unit features a transparent glass door, revealing multiple shelves neatly organized with various wine bottles and beverage cans. The internal blue LED lighting is active, highlighting the contents.*

## 2. IMPORTANT SAFETY INFORMATION

To reduce the risk of fire, electric shock, or injury when using your appliance, follow these basic precautions:

- Read all instructions before using the appliance.
- Do not touch cold surfaces immediately after the appliance has been plugged in.
- Never clean appliance parts with flammable fluids. The fumes can create a fire hazard or explosion.
- Do not store or use gasoline or other flammable vapors and liquids in the vicinity of this or any other appliance.
- Unplug the appliance from the outlet before cleaning or making any repairs.
- Ensure proper grounding.
- Keep the mini wine fridge upright for at least 24 hours before initial use to allow the coolant fluid to settle.

## 3. SETUP

### 3.1 Unpacking

Carefully remove all packaging materials, including the foam base and any tape. Inspect the cooler for any damage during transit. Keep packaging materials until you are satisfied with the product.

### 3.2 Placement

Place the cooler on a flat, stable surface away from direct sunlight and heat sources (e.g., stoves, heaters). Ensure adequate ventilation around the unit. This model is designed for freestanding installation.

# Compact Design Expansive Possibilities

Store up to  
**45**  
Bottles

6 Removable  
stainlesssteel  
Wire Shelves



31.5" (H)

21.7" (D)

20.3" (W)



White and  
Sparkling wine  
**41°F–53.6°F**



Red wine  
**57.2°F–61°F**

*Image: This image illustrates the compact design and dimensions of the wine cooler. The unit measures 20.3 inches in width, 21.7 inches in depth, and 31.5 inches in height, with wine bottles placed alongside to provide a sense of scale for its capacity.*

### 3.3 Initial Power-On

After placing the cooler in its desired location, allow it to stand upright for at least 24 hours before plugging it into a power outlet. This allows the refrigerant to settle, preventing potential damage to the cooling system.

### 3.4 Door Reversibility

The door of this wine cooler is reversible, allowing it to open from either the left or right side to suit your space and preference. Refer to the detailed instructions in the included user manual for steps on how to reverse the door swing.

## 4. OPERATING INSTRUCTIONS

### 4.1 Temperature Control

The cooler features an easy touch control panel located at the top of the door. Use the ▲ (Up) and ▼ (Down) buttons to adjust the internal temperature. The temperature range is 40°F to 61°F (4°C to 16°C).



*Image: A detailed view of the wine cooler's easy touch control panel. It features a digital temperature display (showing 40°F), along with up/down arrows for temperature adjustment, and a button to control the interior LED light. A lock icon indicates the control panel's security feature.*

## 4.2 Interior LED Light

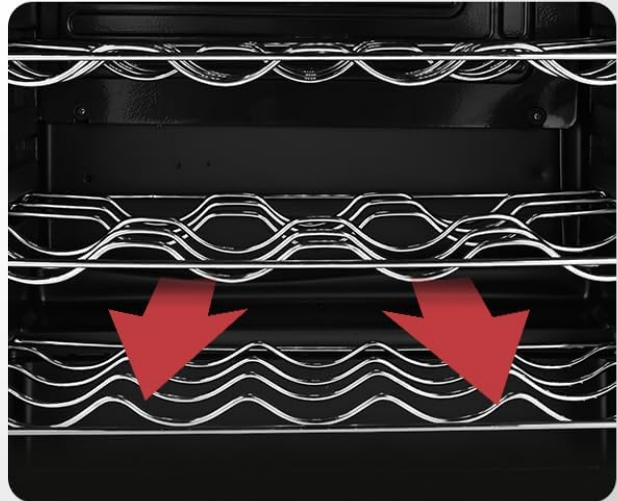
Press the light bulb icon on the control panel to turn the interior blue LED light on or off. This light illuminates the contents, making it easy to view your collection.

## 4.3 Loading Bottles and Cans

The cooler includes full-width sliding shelves that can be adjusted or removed to accommodate various sizes of wine bottles and beverage cans. Arrange items to allow for proper air circulation.

### Removable Shelves

Moveable dividers let you customize shelf space, adapting to tall bottles or compact cans with a simple slide

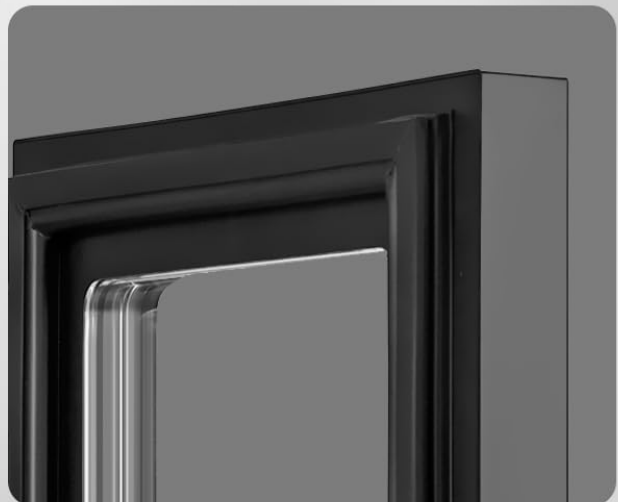


### LED Soft Light

Gentle glow illuminates without harming, showcasing your wines in perfect clarity.

### Air-Tight seal

Equipped with strong sealing to keep the temperature constant and the wine fresh.



*Image: This image is a collage highlighting key features: removable shelves for flexible storage, a soft blue LED light for interior illumination, and a close-up of the door's air-tight seal designed to maintain internal temperature.*

#### 4.4 Dual-Layer Tempered Glass Door

The double-layer tempered glass door with a sealing strip helps prevent cold air from escaping and keeps warm air out. It also offers UV protection for your beverages.



*Image: This diagram illustrates the dual-layer tempered glass door, highlighting its ability to protect contents from UV rays and maintain internal temperature stability.*

#### 4.5 Advanced Cooling System

The 360° circulating duct cooling system ensures every bottle or can stays evenly chilled. The high-efficiency compressor operates quietly, at less than 38 dB, making it suitable for various living spaces.

# Advanced Cooling Tech

## Silent Air Circulation



*Image: This image presents a diagram of the wine cooler's advanced cooling technology, specifically the 360° circulating duct cooling system, which ensures even temperature distribution between 40°F and 61°F throughout the unit.*

# Low Noise & Energy Saving



38 dB



0.44 kWh/Day



*Image: This image depicts the wine cooler in a living room environment, emphasizing its low noise operation (less than 38 dB) and energy efficiency (0.44 kWh/Day). A couple is shown enjoying wine near the unit, suggesting its quiet performance.*

## 5. MAINTENANCE

### 5.1 Cleaning

Regularly clean the interior and exterior of your wine cooler. Unplug the unit before cleaning. Use a soft cloth with a mild detergent and water. Avoid abrasive cleaners or solvents that could damage the surfaces.

### 5.2 Defrosting

This appliance features manual defrost. Over time, frost may accumulate on the interior cooling surfaces. To defrost, unplug the unit and remove all contents. Allow the frost to melt naturally. Wipe away excess water with a clean cloth. Do not use sharp objects to remove frost.

## 6. TROUBLESHOOTING

If you experience issues with your wine cooler, consult the following table for common problems and solutions:

Problem	Possible Cause	Solution
Appliance does not operate	Not plugged in; circuit breaker tripped; temperature set too high.	Ensure plug is secure; reset circuit breaker; lower temperature setting.
Temperature is not cold enough	Door not closed properly; frequent door openings; poor ventilation; excessive items inside.	Check door seal; reduce door openings; ensure adequate space around unit; do not overfill.
Excessive noise	Appliance not level; vibrating against wall/cabinet.	Adjust leveling feet; move unit slightly away from contact points.
Frost buildup	High humidity; door left open.	Ensure door is sealed; perform manual defrost as needed.

## 7. SPECIFICATIONS

Feature	Detail
Brand Name	Feelfunn
Model Info	FWC002-20BL-USZX
Product Dimensions	21.7"D x 20.3"W x 31.5"H
Capacity	4.5 Cubic Feet (Up to 45 bottles)
Annual Energy Consumption	438 Kilowatt Hours Per Year
Installation Type	Freestanding
Special Features	Adjustable Shelves, LED Interior Light
Color	Black
Voltage	115 Volts
Defrost System	Manual
Number Of Doors	1
Shelves	6

## **8. WARRANTY AND CUSTOMER SUPPORT**

Your Feelfunn wine cooler comes with a 1-year warranty. For any questions, technical assistance, or warranty claims, please contact our customer support team. We offer 24/7 customer support to ensure your satisfaction. Please refer to the contact information provided on the product packaging or the official Feelfunn website for the most up-to-date support details.