

IsEasy 4019402

IsEasy 90cm Wall-Mounted Range Hood Instruction Manual

Model: 4019402

Brand: IsEasy

INTRODUCTION

Thank you for choosing the IsEasy 90cm Wall-Mounted Range Hood. This manual provides essential information for the safe installation, operation, and maintenance of your new appliance. Please read these instructions carefully before use and keep them for future reference.

IMPORTANT SAFETY INFORMATION

To reduce the risk of fire, electric shock, or injury, observe the following:

- Read all instructions before using this appliance.
- Installation must be carried out by a qualified technician in accordance with local regulations.
- Ensure the power supply is disconnected before any installation, maintenance, or cleaning.
- Do not flambé under the range hood.
- Regularly clean grease filters to prevent grease accumulation.
- This appliance is for domestic use only.
- Keep children away from the appliance during operation.

SETUP AND INSTALLATION

The IsEasy 90cm Range Hood is designed for wall-mounted installation. Proper installation is crucial for optimal performance and safety.

Product Dimensions

The overall dimensions of the range hood are approximately 38.6 cm (depth) x 89.5 cm (width) x 34 cm (height).

The adjustable chimney can extend from 40 cm to 75 cm.

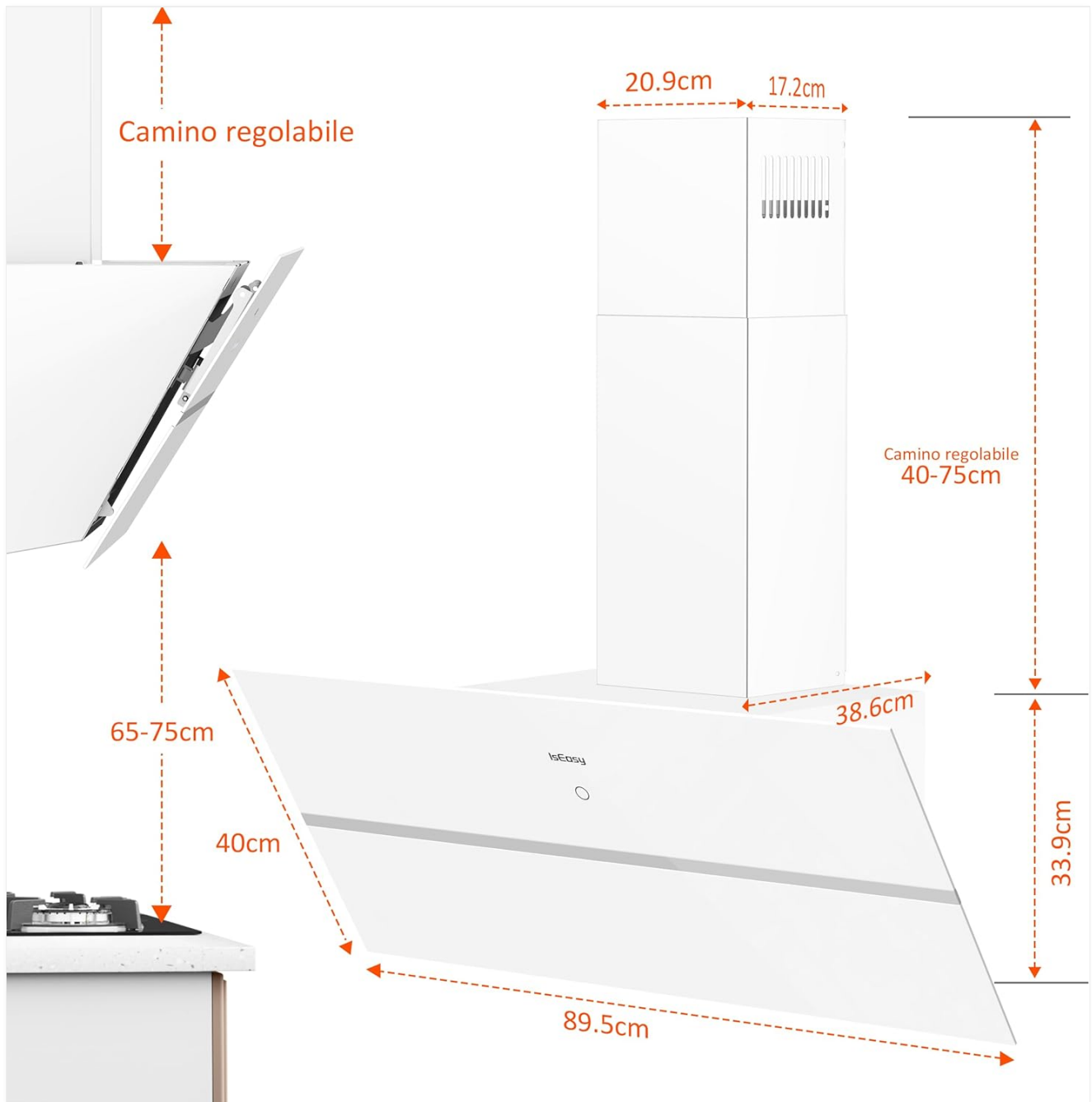


Image: Detailed dimensions of the IsEasy 90cm range hood, including the main unit and the adjustable chimney. The image shows a width of 89.5cm, depth of 38.6cm, and height of 33.9cm for the main body, with a recommended installation height of 65-75cm above the hob. The adjustable chimney ranges from 40-75cm in height.

Ensure a minimum distance of 65-75 cm between the cooking surface and the bottom of the range hood for efficient extraction and safety.

Included Accessories

The package includes all necessary components for installation:

- Mounting screws and wall plugs
- Mounting brackets for the chimney
- Exhaust pipe (2 meters) for ducted mode
- Activated carbon filters for recirculation mode



Image: A clear display of all accessories included with the IsEasy range hood. This includes the main hood unit, adjustable chimney sections, mounting hardware (screws, wall plugs, brackets), a flexible exhaust duct, and two activated carbon filters.

Installation Steps (Summary)

1. Mark the drilling points on the wall according to the provided template.
2. Drill holes and insert wall plugs.
3. Mount the main body of the range hood securely to the wall.
4. Install the exhaust pipe or carbon filters depending on the chosen ventilation mode.
5. Attach the adjustable chimney sections.
6. Connect the appliance to the power supply.

Note: For detailed installation instructions, please refer to the separate installation guide provided with your product.

OPERATING INSTRUCTIONS

The IsEasy range hood features intuitive touch controls for easy operation.

Control Panel Overview

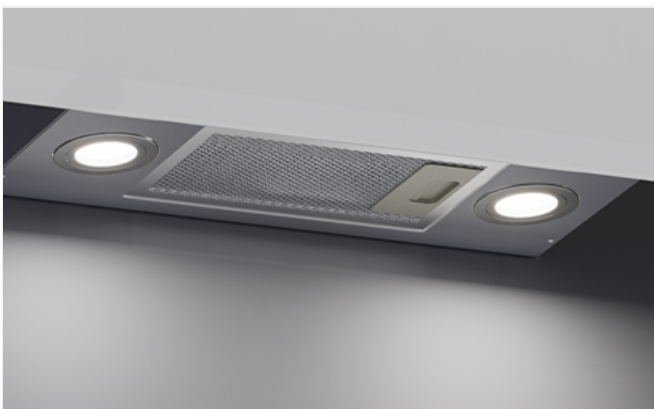



 1-9minuti

**Funzione di spegnimento
 ritardato da 1 a 9 minuti**

Image: Close-up of the IsEasy range hood's touch control panel. It highlights buttons for delayed shutdown (1-9 minutes), increasing/decreasing fan speed, digital display/power on/off, and light on/off.

- **Power On/Off:** Touch the central button to turn the hood on or off.
- **Fan Speed Adjustment:** Use the '+' and '-' buttons to select one of the 4 available fan speeds. The digital display will show the current speed level.
- **Light Control:** Touch the light bulb icon to turn the LED lights on or off.
- **Delayed Shutdown:** Activate the timer function (1-9 minutes) to allow the hood to continue operating for a set period after cooking, then automatically switch off.
- **Memory Function:** The hood remembers the last fan speed setting used.



Luci LED 3W a risparmio energetico

1.5W*2 Le luci a LED possono illuminare la tua zona cottura in qualsiasi momento.

Supporto staffa

Struttura di supporto fissa per asta del gas, fissata a 45°, aumenta lo spazio di aspirazione dell'aria



Image: The range hood operating with the delayed shutdown function activated, indicated by a timer icon and '1-9min' on the control panel. This feature allows the hood to absorb residual fumes after cooking.

Ventilation Modes

The IsEasy range hood supports two ventilation modes:

- **Ducted (Exhaust) Mode:** Air is extracted from the kitchen and expelled outside through the 2-meter exhaust pipe. This mode requires an external vent.
- **Recirculation Mode:** Air is filtered through activated carbon filters to remove odors and then recirculated back into the kitchen. This mode is suitable when external venting is not possible.



Image: Diagram illustrating the two operating modes of the range hood: recirculation mode (left) where air passes through carbon filters and is returned to the kitchen, and exhaust mode (right) where air is expelled outside via a duct. Both modes show smoke being drawn into the hood.

LED Lighting

The hood is equipped with two 1.5W LED lights (total 3W) to illuminate your cooking area effectively.



Luci LED a risparmio energetico da 3 W

illumina la tua zona cottura in qualsiasi momento

Image: The underside of the IsEasy range hood showing the two integrated 1.5W LED lights illuminating the cooking surface below. The image emphasizes the energy-saving aspect of the 3W LED lighting.

Quiet Operation

The IsEasy range hood operates with a maximum noise level of 61 dB, ensuring a quiet kitchen environment.



Image: An image depicting a quiet kitchen environment with the IsEasy range hood operating, highlighting its low noise level of 61dB. A woman and child are comfortably interacting in the kitchen.

MAINTENANCE

Regular maintenance ensures the longevity and efficient operation of your range hood.

Cleaning the Aluminum Grease Filters

The hood is fitted with a 5-layer aluminum grease filter. These filters should be cleaned regularly, ideally every 2-4 weeks depending on usage, to maintain optimal performance.

- To access the filters, gently open the glass panel. The panel is supported by gas springs and opens up to a 45-degree angle.
- Remove the aluminum filters by releasing their latches.
- The filters can be washed by hand with warm soapy water or placed in a dishwasher.
- Ensure filters are completely dry before re-installing.



Image: The IsEasy range hood with its front glass panel open at a 45-degree angle, revealing the internal aluminum grease filters. An inset image shows the gas spring support mechanism that holds the panel open for easy access to the filters.

Replacing Activated Carbon Filters (Recirculation Mode Only)

If using the hood in recirculation mode, the activated carbon filters need to be replaced periodically (typically every 3-6 months, depending on usage). These filters are not washable.

- Follow the steps to open the glass panel and remove the aluminum filters.
- Locate and remove the old carbon filters.
- Install new carbon filters, ensuring they are securely in place.
- Re-install the aluminum filters and close the glass panel.

Exterior Cleaning

Clean the exterior surfaces of the hood with a soft cloth and a mild, non-abrasive detergent. Avoid using harsh chemicals or abrasive cleaners that could damage the finish.

TROUBLESHOOTING

Before contacting customer service, please check the following common issues:

Problem	Possible Cause	Solution
Hood does not turn on	No power supply; power cord disconnected.	Check power connection and circuit breaker.
Low suction power	Grease filters are clogged; carbon filters are saturated (recirculation mode); exhaust duct is blocked or too long.	Clean or replace filters; check exhaust duct for obstructions.

Problem	Possible Cause	Solution
Excessive noise	Loose components; fan obstruction; incorrect installation of ducting.	Check for loose parts; ensure no objects are in the fan; verify ducting installation.
Lights not working	LED bulbs faulty; electrical connection issue.	Contact qualified service personnel for bulb replacement or electrical check.

SPECIFICATIONS

Feature	Detail
Brand	IsEasy
Model Number	4019402
Mounting Type	Wall-mounted
Control Type	Touch
Light Source Type	LED (2 x 1.5W)
Filter Type	5-layer Aluminum Baffle Filter
Ventilation Type	Recirculating or Ducted (Exhaust)
Airflow Capacity	Up to 571 m ³ /h
Noise Level	61 dB (maximum)
Fan Speed Levels	4
Delayed Shutdown Timer	1-9 minutes
Product Dimensions (W x D x H)	89.5 cm x 38.6 cm x 34 cm
Adjustable Chimney Height	40-75 cm
Color	White

WARRANTY INFORMATION

Please refer to your purchase documentation or the manufacturer's official website for detailed warranty terms and conditions. Keep your proof of purchase for any warranty claims.

CUSTOMER SUPPORT

For technical assistance, spare parts, or any questions regarding your IsEasy range hood, please contact IsEasy customer support through their official website or the contact information provided in your product packaging.

