



[Manuals.plus](#) /

> [SHPAI](#) /

> SHPAI 10x14FT Lean to Sunroom Enclosed Gazebo Instruction Manual

## SHPAI 10x14FT Lean to Sunroom

# SHPAI 10x14FT Lean to Sunroom Enclosed Gazebo Instruction Manual

Model: 10x14FT Lean to Sunroom | Brand: SHPAI

## 1. INTRODUCTION

---

Thank you for choosing the SHPAI 10x14FT Lean to Sunroom Enclosed Gazebo. This manual provides essential information for the safe assembly, operation, and maintenance of your new sunroom. Please read all instructions carefully before beginning assembly and retain this manual for future reference.

This sunroom is designed to provide an enclosed outdoor living space, featuring a galvanized steel sloping roof, detachable PC screens, and three sliding doors. It is intended for residential use on patios or decks.

## 2. SAFETY INFORMATION

---

- Always follow all assembly instructions provided in the separate assembly guide.
- Use caution when handling heavy components during assembly. It is recommended to have at least two people for assembly.
- Install the provided support poles at all times, especially in stormy or windy weather, to enhance structural stability and security.
- Ensure the sunroom is anchored securely to a stable surface using the pre-drilled anchoring base.
- Consult the manufacturer's guidelines for specific weight limits and structural integrity information.
- The galvanized steel roof blocks 99% of harmful UV rays. However, prolonged exposure to direct sunlight should still be limited.
- Regularly inspect all components for wear, damage, or loose connections. Address any issues promptly.

## 3. SETUP AND ASSEMBLY

---

Assembly of the SHPAI Lean to Sunroom is required. Please refer to the detailed assembly guide included with your product for step-by-step instructions, diagrams, and a complete parts list. The process can be time-consuming, and careful attention to detail is necessary.

## Key Assembly Considerations:

- **Site Preparation:** Choose a level and stable surface for installation, such as a patio or deck. Ensure adequate clearance around the sunroom.
- **Wall Mounting:** This sunroom is designed to be wall-mounted. Ensure the wall structure is capable of supporting the sunroom's weight and can be securely attached.
- **Roof Panels:** The plastic protective film on the roof panels can be tricky to remove. Exercise patience and care to avoid scratching the panels.
- **Support Poles:** The sunroom includes two extra detachable support poles. These are crucial for enhancing stability and improving wind resistance, especially in severe weather conditions. Always install these poles.
- **Anchoring:** Utilize the pre-drilled anchoring base to firmly secure the sunroom to the ground or deck. This enhances stability and safety.

# SHPAI 10X14FT

## LEAN to SUNROOM GAZEBO DIMENSION

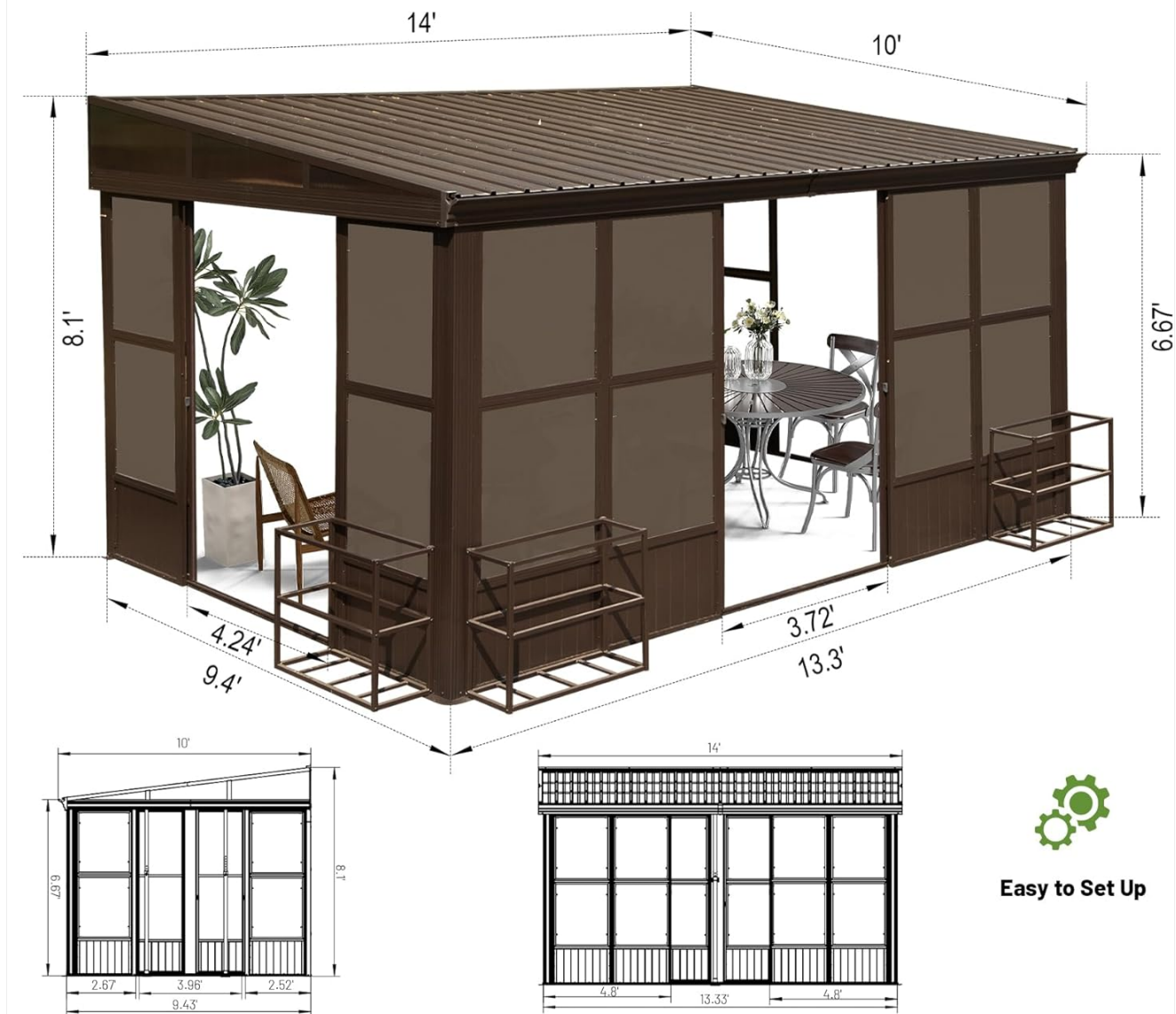


Figure 3.1: SHPAI 10x14FT Lean to Sunroom Gazebo Dimensions. The sunroom measures 168 inches (14 feet) in length, 120 inches (10 feet) in width, and 97.2 inches (8.1 feet) in height at the highest point.

# WALL-MOUNTED SUN ROOM

Against the wall and blends with your house perfectly



Figure 3.2: Detail of the wall-mounting mechanism, showing a bracket securely attaching the sunroom frame to an adjacent wall.

## 2 EXTRA DETACHABLE SUPPORT POLES ENSURE SAFETY & STABLE in SEVERE WEATHER

Please keep install the support poles all the time, especially in villainous weather

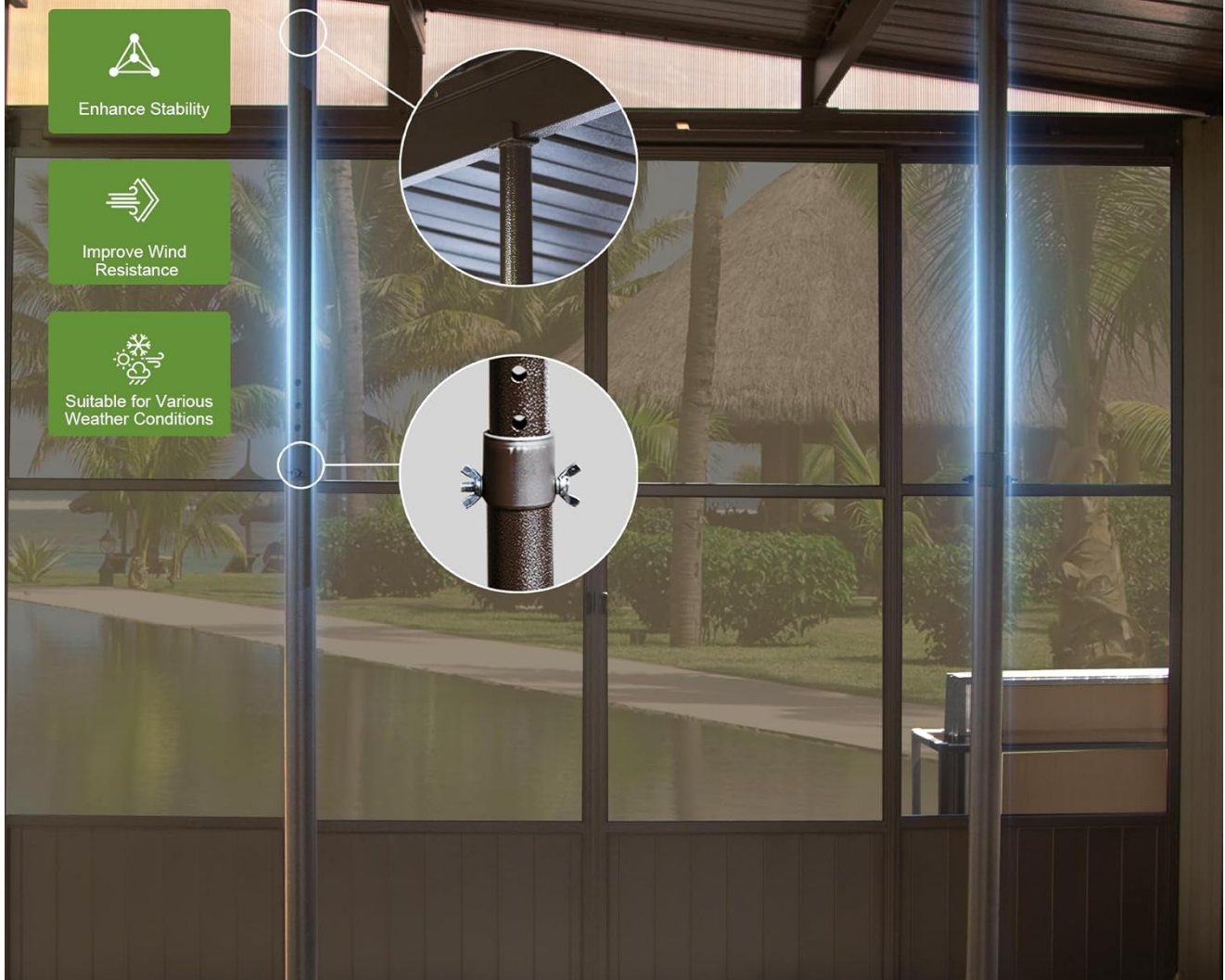


Figure 3.3: Detachable support poles for enhanced stability, particularly important in severe weather conditions.

## 4. OPERATING INSTRUCTIONS

### Sliding Doors:

The sunroom features three elegant sliding doors designed for smooth operation. To open or close, gently slide the doors along their heavy-duty tracks. The doors are equipped with secure locking mechanisms to maintain insulation and security. These doors allow for seamless connection between indoor and outdoor spaces and can be adjusted to maximize airflow in warmer weather or provide insulation in cooler temperatures.

# 3

## SLIDING DOORS of SHPAI WALL MOUNTED SOLARIUM GAZEBO



Figure 4.1: The sunroom's sliding doors, featuring a convenient door handle and smooth sliding track for easy access.

### Detachable PC Screens and Mesh Screens:

The sunroom is equipped with tea-colored polycarbonate (PC) windows that block UV rays, provide shade, and offer privacy. These panels are removable, allowing for conversion of the space. High-density mesh screens are integrated to keep pests out while ensuring air circulation and unobstructed views. The removable panels can be stored on the three included storage shelves when not in use.

# Detachable Screen Windows

User friendly



Waterproof



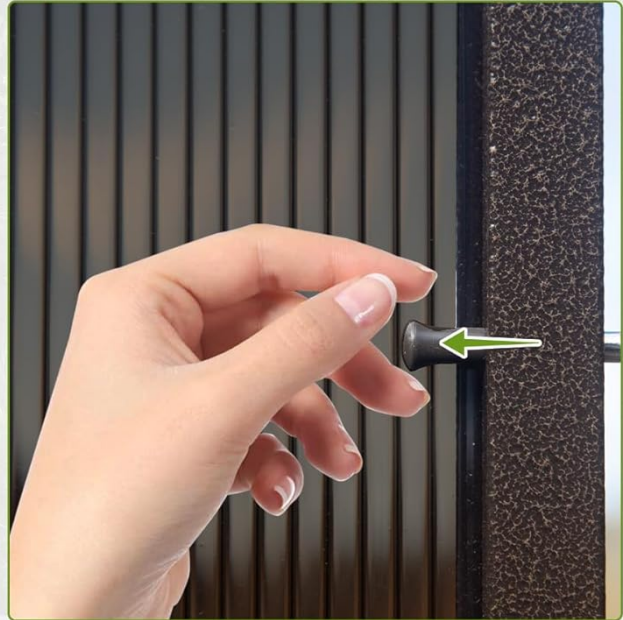
Anti-UV



Windproof



Privacy  
Protect



## Breathable Air Fresh Mesh Screens



Air Ventilation



Enjoy landscapes



Keep Bugs Out

Figure 4.2: Detachable screen windows offering privacy and UV protection, alongside breathable mesh screens for ventilation and insect control.



## 3 STORAGE SHELVES

**Easily place the removable PC panels and keep outdoor tidy**

Figure 4.3: Three storage shelves provided for convenient and tidy storage of the removable PC panels.

### **Versatility:**

This 10'x14' enclosed sunroom offers a multi-functional retreat. It can be adapted for various uses, including a dining area, poolside cabana, home office, yoga studio, plant nursery, or spa enclosure. The customizable layout allows you to configure the space to suit your lifestyle and needs throughout the year.

## **5. MAINTENANCE**

---

### **Roof and Gutter System:**

The sunroom features a galvanized steel sloping roof and an upgraded gutter system designed to prevent water and snow accumulation. Regularly clear the gutters of leaves and debris to ensure efficient water drainage. The galvanized steel construction is UV-resistant, rust-resistant, and corrosion-resistant, requiring minimal maintenance.

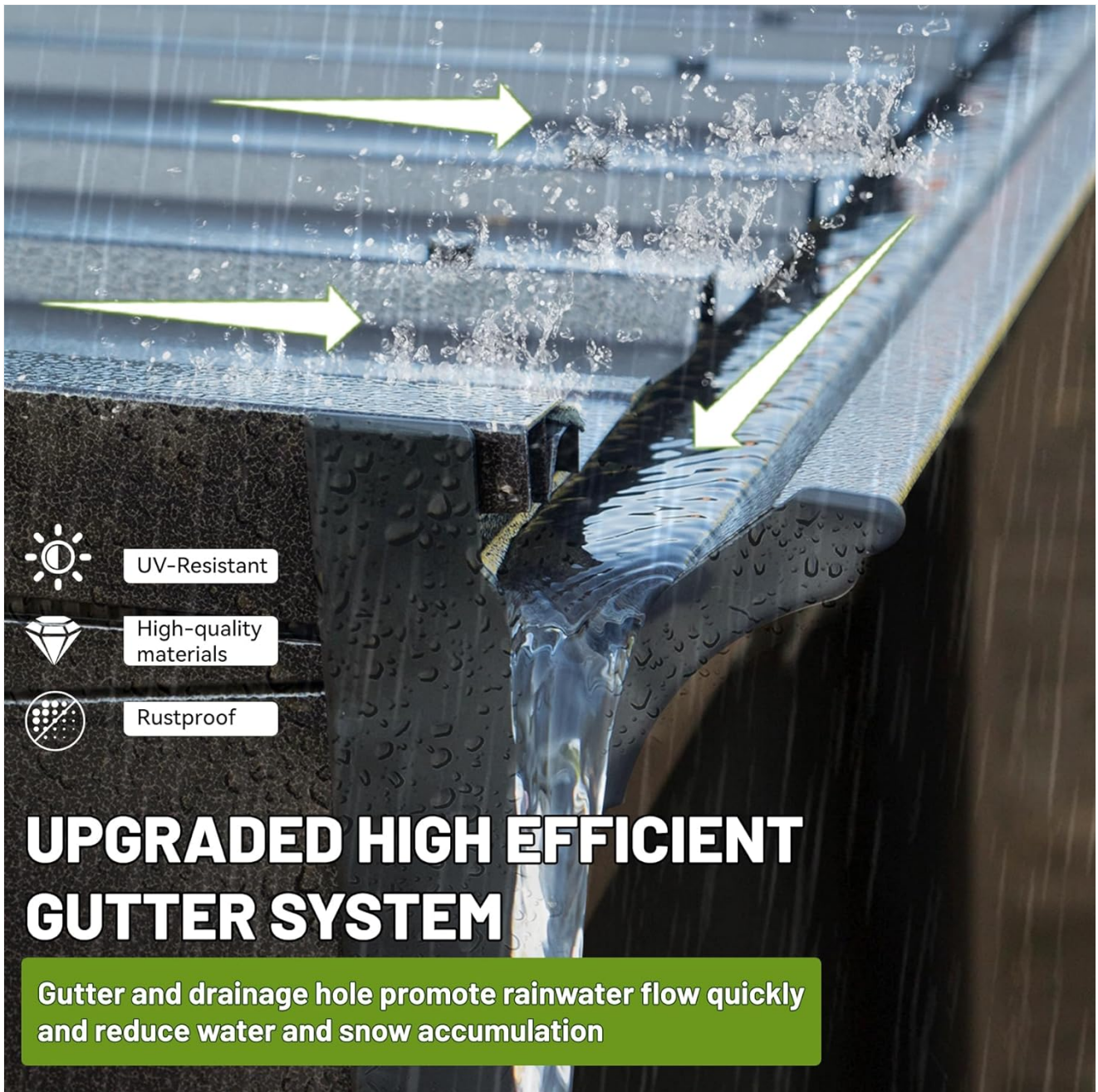


Figure 5.1: The upgraded high-efficiency gutter system, designed to promote rainwater flow and reduce accumulation.

### Frame:

The industrial-grade galvanized steel frame is powder-coated for weather resistance and color retention. This frame is designed to be maintenance-free. Periodically wipe down the frame with a damp cloth to remove dirt and dust. Avoid using harsh chemicals or abrasive cleaners that could damage the finish.

# PREMIUM POWDER COATED METAL FRAME



Robust



Corrosion  
-resistant



All Weather Use



Fade-resistant

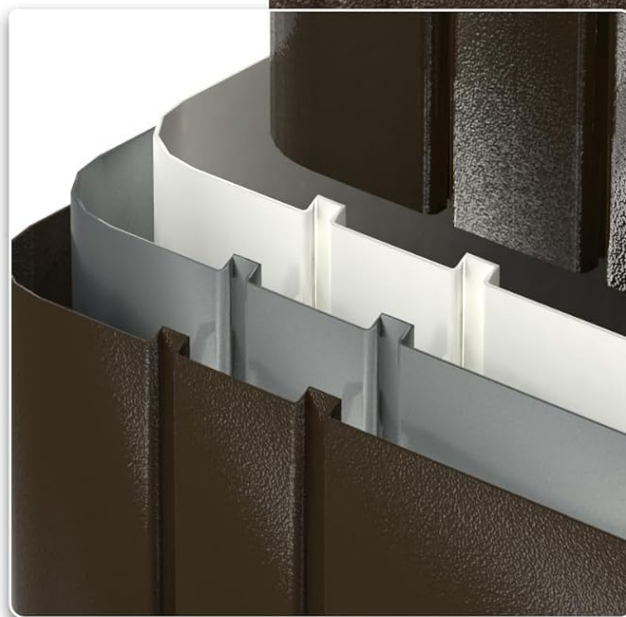


Figure 5.2: Illustration of the premium powder-coated metal frame, highlighting its robust, corrosion-resistant, and fade-resistant properties for all-weather use.

## Screens and Panels:

Clean the PC screens and mesh screens with a soft cloth and mild soap and water. Rinse thoroughly with clean water. Avoid using abrasive materials or strong detergents that may scratch or damage the surfaces.

## 6. TROUBLESHOOTING

- **Water Accumulation on Roof:** Ensure the gutter system is clear of debris. Verify that the roof panels are correctly installed and sealed according to the assembly instructions.
- **Difficulty Sliding Doors:** Check the tracks for any obstructions (dirt, debris). Clean the tracks thoroughly. Ensure the doors are properly aligned on their tracks.
- **Sunroom Instability:** Confirm that the sunroom is securely anchored to the ground or deck. Ensure all bolts and fasteners are tightened. Verify that the two extra support poles are installed, especially during windy conditions.

- **Pests Entering Sunroom:** Inspect mesh screens for any tears or gaps. Ensure all sliding doors and detachable panels are fully closed and properly sealed when desired.

## 7. SPECIFICATIONS

---

<b>Brand</b>	SHPAI
<b>Model</b>	10x14FT Lean to Sunroom
<b>Material</b>	Metal Frame + Steel Roof
<b>Style</b>	Modern, Classic
<b>Product Dimensions (L x W x H)</b>	168"L x 120"W x 97.2"H
<b>Item Weight</b>	539 Pounds
<b>Frame Material</b>	Metal
<b>Water Resistance Level</b>	Water Resistant
<b>Shape</b>	Rectangular
<b>Ultraviolet Light Protection</b>	99% UV-proof, UPF 50+
<b>Assembly Required</b>	Yes
<b>Color</b>	Dark Brown with Steel Roof

## 8. WARRANTY AND SUPPORT

---

### Warranty Information:

For detailed warranty information regarding your SHPAI 10x14FT Lean to Sunroom Enclosed Gazebo, please refer to the specific warranty documentation included with your purchase or contact SHPAI customer service directly. Warranty terms typically cover manufacturing defects and material flaws under normal use.

### Customer Support:

Should you require assistance with assembly, have questions about operation, or need to report a missing or damaged part, please contact SHPAI customer service. Have your product model number (10x14FT Lean to Sunroom) and purchase details ready when contacting support for faster service.

Contact information for SHPAI customer service can typically be found on the product packaging, the original purchase invoice, or the official SHPAI website.