



Manuals.plus /

› Gudsunal /

› Gudsunal C6003B-UK Ceramic Electric Hob User Manual

Gudsunal C6003B-UK

Gudsunal C6003B-UK Ceramic Electric Hob User Manual

Model: C6003B-UK

1. IMPORTANT SAFETY INFORMATION

Read all instructions carefully before using the appliance. Keep this manual for future reference. Improper installation, adjustment, alteration, service, or maintenance can cause injury or property damage. Refer to this manual. For assistance or additional information, consult a qualified installer, service agency, or the manufacturer.

- **Electrical Safety:** Ensure the appliance is correctly earthed. Do not operate with wet hands. Disconnect power before cleaning or maintenance.
- **Burn Hazard:** The hob surface remains hot after use. Do not touch hot surfaces. Use oven mitts.
- **Child Safety:** This appliance is not intended for use by persons (including children) with reduced physical, sensory or mental capabilities, or lack of experience and knowledge, unless they have been given supervision or instruction concerning use of the appliance by a person responsible for their safety. The child lock feature should always be engaged when not in use.
- **Fire Hazard:** Never leave cooking unattended. Do not store flammable materials on or near the hob.
- **Proper Use:** This appliance is for domestic cooking purposes only. Do not use it for other purposes, such as heating a room.

2. WHAT'S IN THE BOX

Carefully unpack the box and ensure all items are present and undamaged. If any items are missing or damaged, contact customer support immediately.

- Gudsunal Ceramic Electric Hob
- User Manual
- Installation Kits
- Cut-out Size Chart
- 4 Rubber Feet
- Sealing Tape

3. PRODUCT OVERVIEW

The Gudsunal C6003B-UK is a 4-zone ceramic electric hob designed for efficient and safe cooking. It features a sleek ceramic glass surface, touch controls, and multiple safety functions.

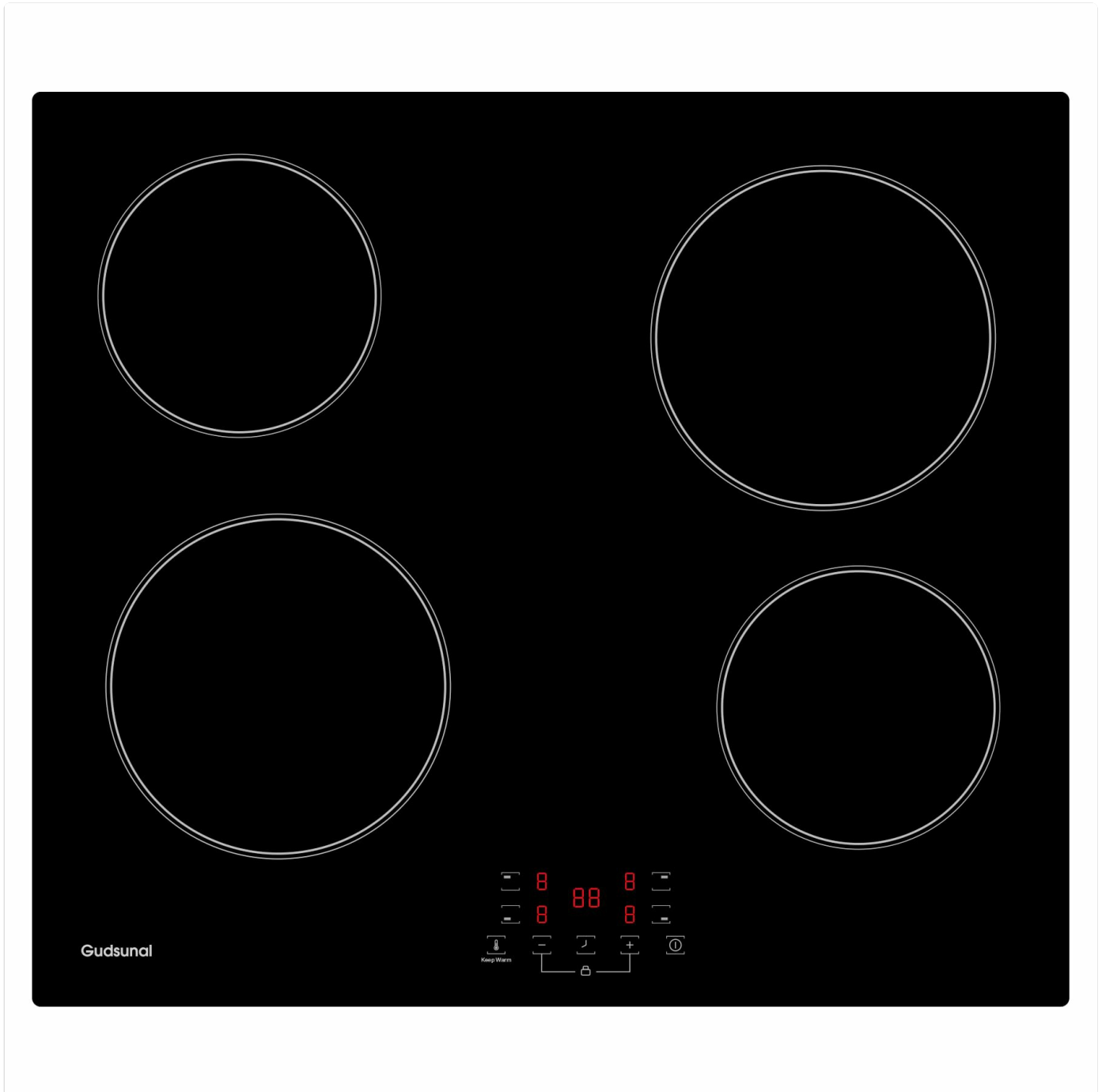


Image 1: Gudsunal C6003B-UK Ceramic Electric Hob. This image shows the top view of the hob, highlighting its four cooking zones and the touch control panel located at the front.

Key Features:

- **4 Cooking Zones:** Versatile cooking options with a total power output of 6000W.
- **9 Power Levels:** Precise control for various cooking needs, from simmering to boiling.
- **Keep Warm Function:** Maintain ideal food temperature with a dedicated setting for each zone.
- **Digital Timer:** Integrated timer for accurate cooking duration.
- **Child Lock:** Prevents accidental operation, enhancing safety.
- **Residual Heat Indicator:** Alerts when the hob surface is still hot after use.
- **Automatic Shut-off:** Safety feature to prevent overheating.

- **Durable Ceramic Glass:** Advanced shatterproof ceramic glass surface, compatible with all types of cookware (non-induction).

4. INSTALLATION

Installation should be performed by a qualified technician in accordance with local regulations and safety standards. Ensure the power supply is disconnected before beginning installation.

4.1. Preparation:

- Ensure the countertop material is heat-resistant.
- Verify the integrated hole dimensions: 56 cm (width) x 49 cm (depth).
- Ensure adequate ventilation space beneath the hob.

4.2. Steps:

1. Cut an opening in the countertop according to the specified dimensions (56x49 cm). Refer to the included "Cut-out Size Chart" for precise measurements.
2. Apply the provided sealing tape around the edge of the hob's underside to prevent liquid ingress.
3. Insert the hob into the cut-out opening. Ensure it sits flush with the countertop.
4. Secure the hob from underneath using the provided installation kits and rubber feet.
5. Connect the hob to the main electrical supply. This appliance requires a hardwired connection. Ensure wiring is done by a qualified electrician.
6. After installation, check that the hob is stable and properly earthed.

5. OPERATING INSTRUCTIONS

This section details how to use your ceramic electric hob. All controls are touch-sensitive.

5.1. Powering On/Off:

- To turn on, touch the **Power** button. The display will show "0" for all zones.
- To turn off, touch and hold the **Power** button until all indicators turn off.

5.2. Selecting a Cooking Zone and Setting Power Level:

1. Place appropriate cookware on the desired cooking zone.
2. Touch the **Zone Selection** button for the desired zone. The indicator for that zone will flash.
3. Use the "+" or "-" buttons to adjust the power level from 1 to 9.
4. To change the power level for another zone, repeat steps 2 and 3.

5.3. Keep Warm Function:

- After selecting a cooking zone, touch the **Keep Warm** button. The zone will maintain a low temperature to keep food warm without further cooking.

5.4. Timer Function:

1. Select the desired cooking zone and set its power level.
2. Touch the **Timer** button. The timer display will flash.
3. Use the "+" or "-" buttons to set the desired cooking time (up to 99 minutes).
4. The timer will start counting down. When the time expires, the cooking zone will automatically turn off, and an audible signal will sound.

5.5. Child Lock:

- To activate, touch and hold the **Child Lock** button for a few seconds. An indicator light will illuminate, and the controls will be locked.
- To deactivate, touch and hold the **Child Lock** button again until the indicator light turns off.

5.6. Residual Heat Indicator:

- After a cooking zone is turned off, the display may show an "H" (Hot) indicator. This means the surface is still hot and care should be taken. The "H" will disappear when the surface has cooled to a safe temperature.

6. CLEANING AND MAINTENANCE

Regular cleaning and proper maintenance will ensure the longevity and optimal performance of your hob.

6.1. Daily Cleaning:

- Always ensure the hob is cool and disconnected from the power supply before cleaning.
- Wipe the ceramic glass surface with a soft cloth and a mild detergent.
- For stubborn stains, use a specialized ceramic hob cleaner and a non-abrasive sponge.
- Rinse with clean water and dry thoroughly with a soft, clean cloth to prevent water marks.

6.2. Avoiding Damage:

- Do not use abrasive cleaners, scouring pads, or harsh chemicals, as these can scratch or damage the ceramic surface.
- Avoid dropping heavy or sharp objects on the hob surface.
- Do not slide rough-bottomed cookware across the surface, as this can cause scratches.
- Clean up spills immediately, especially sugary liquids, to prevent them from burning onto the surface and causing permanent damage.

7. TROUBLESHOOTING

If you encounter issues with your hob, refer to the following table for common problems and solutions. If the problem persists, contact customer support.

| Problem | Possible Cause | Solution |
|------------------------------|--|--|
| Hob does not turn on. | No power supply; Child lock activated. | Check circuit breaker; Deactivate child lock. |
| Cooking zone not heating. | Incorrect power level set; Cookware not suitable (though hob is compatible with all types, ensure it's flat-bottomed and covers the zone). | Increase power level; Ensure cookware is appropriate and centered. |
| "H" indicator remains on. | Residual heat. | This is normal. Wait for the hob to cool down. |
| Hob automatically shuts off. | Overheating protection activated; Timer expired. | Allow hob to cool; Check timer settings. |
| Controls unresponsive. | Child lock activated; Moisture on control panel. | Deactivate child lock; Wipe control panel dry. |

8. SPECIFICATIONS

Technical details for the Gudsunal C6003B-UK Ceramic Electric Hob.

- **Model Number:** C6003B-UK
- **Brand:** Gudsunal
- **Type:** Ceramic Electric Hob
- **Number of Heating Elements:** 4
- **Total Power Output:** 6000 W
- **Power Levels:** 9
- **Product Dimensions (L x W x H):** 59 x 52 x 4.9 cm
- **Integrated Hole Dimensions (W x D):** 56 x 49 cm
- **Weight:** 9 kg
- **Power Source:** Corded Electric (Hardwired)
- **Special Features:** Automatic Shut-off, Safety Lock (Child Lock), Hot Surface Indicator, Adjustable Temperature, Timer.
- **Surface Material:** Ceramic Glass
- **Overall Material:** Metal
- **Burner Type:** Sealed
- **Ignition System Type:** Electronic

9. WARRANTY AND SUPPORT

For warranty information, please refer to the documentation provided at the time of purchase or contact your retailer. For technical support, spare parts, or service inquiries, please contact Gudsunal customer service through their official website or the contact details provided in your purchase documentation.

Please retain your proof of purchase for any warranty claims.

