

GODOX Godox V1N

GODOX V1N TTL Flash for Nikon Cameras Instruction Manual

Model: Godox V1N

- Setup
- Operating  
Instructions
- Maintenance  
Warranty &  
Support
- Troubleshooting
- Specifications

PRODUCT OVERVIEW

The GODOX V1N TTL Flash is a high-performance round head camera flash designed for Nikon cameras. It features a powerful 76Ws output, 2.4G wireless X system, 1/8000 HSS, and a long-lasting 2600mAh lithium battery. Its innovative round flash head provides soft and even light, making it ideal for various photography styles including portrait, wedding, event, and travel photography.



Image: GODOX V1N TTL Flash with its distinctive round head and red accent ring, highlighting its design and key features.

SETUP

1. Battery Installation

The GODOX V1N uses a 7.2V/2600mAh lithium battery. To install or replace the battery:

1. Locate the battery compartment on the side of the flash unit.
2. Press the battery release button and slide the battery cover open.
3. Insert the lithium battery, ensuring the contacts align correctly.
4. Close the battery cover until it clicks securely into place.



**Front Curtain Sync**



**Rear Curtain Sync**



## Flash Exposure Compensation

Image: Close-up view of the GODOX V1N flash unit showing the battery compartment and the removable lithium battery.

### 2. Mounting the Flash to Your Camera

To attach the GODOX V1N to your Nikon camera's hot shoe:

1. Ensure the flash is powered off.
2. Slide the flash's mounting foot into the camera's hot shoe.
3. Rotate the locking ring on the flash unit clockwise until it is securely tightened. Do not overtighten.

## Wireless Control & Abundant Functions

- Built-in Godox 2.4G wireless X system offers all-in-one function and great compatibility.



Image: The GODOX V1N flash unit securely attached to a camera's hot shoe, demonstrating the mounting process.

### 3. Powering On/Off

Press and hold the power button (usually marked with a green circle) on the flash unit to turn it on or off. The LCD screen will illuminate upon power-on.

## OPERATING INSTRUCTIONS

---

The GODOX V1N offers various modes and settings for versatile lighting control. Refer to the detailed video below for a visual guide on common operations.

Video: This video provides a comprehensive operational tutorial for Godox flashes, demonstrating how to navigate menus, adjust settings, and utilize various flash modes. While featuring a V860III, many functions are similar to the V1N.

### 1. Flash Modes (TTL, Manual, Multi)

- **TTL (Through-The-Lens) Mode:** The flash automatically adjusts its output for correct exposure. Press the 'MODE' button to cycle through modes until 'ETTL' is displayed.
- **Manual (M) Mode:** Allows you to manually set the flash power output (e.g., 1/1, 1/2, 1/4, etc.). Press 'MODE' until 'M' is displayed, then use the dial to adjust power.
- **Multi (Stroboscopic) Mode:** Fires a series of rapid flashes to capture multiple movements in a single exposure.

Press 'MODE' until 'MULTI' is displayed, then set flash frequency and number of flashes.

## 2. Adjusting Exposure and Zoom

- **Exposure Compensation:** In TTL mode, use the '+/-' button and dial to fine-tune flash exposure.
- **Zoom Adjustment:** Press the 'ZOOM' button and turn the dial to adjust the focal distance of the light head, matching your lens's focal length for optimal light spread.

## 3. Sync Modes and FEB

- **High-Speed Sync (HSS):** Allows the flash to synchronize with shutter speeds faster than the camera's native sync speed. Press the 'SYNC' button to activate.
- **Rear-Curtain Sync:** Fires the flash just before the shutter closes, creating a motion blur effect behind the subject. Press 'SYNC' repeatedly to select.
- **Flash Exposure Bracketing (FEB):** Automatically shoots three images at different flash exposures. Press the 'FEB' button to activate.

## 4. Wireless Control

The GODOX V1N features a built-in 2.4G wireless X system for off-camera flash control. It can act as both a transmitter and a receiver.

1. Access the wireless settings via the menu.
2. Set the flash to Transmitter (Tx) or Receiver (Rx) mode.
3. Ensure all units (flash and trigger) are set to the same channel and ID for seamless communication.





Image: Diagram illustrating the GODOX V1N's wireless control capabilities, showing it interacting with other Godox flash units and triggers.

## 5. Modeling Lamp

The V1N includes a 10-level SMD LED modeling lamp for pre-visualization of lighting effects. Press the 'MODEL' button to activate and adjust its brightness.

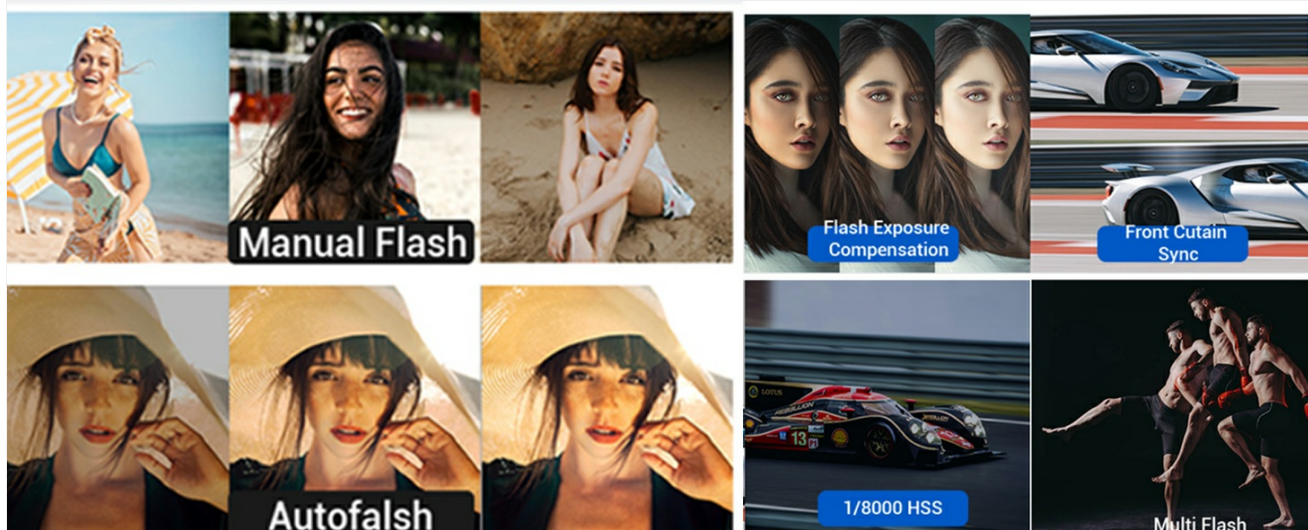


Image: A visual representation of the GODOX V1N's various features, including its round head, magnetic mount, and modeling lamp, alongside examples of its application in different photography scenarios.

## MAINTENANCE

---

Proper maintenance ensures the longevity and optimal performance of your GODOX V1N flash unit.

- **Cleaning:** Regularly wipe the flash unit with a soft, dry cloth. For stubborn dirt, use a slightly damp cloth and then dry thoroughly. Avoid harsh chemicals or abrasive materials.
- **Battery Care:** Store the lithium battery in a cool, dry place when not in use. If storing for extended periods, charge the battery to about 50% capacity every few months to maintain its health.
- **Storage:** When not in use, store the flash in its protective case in a dust-free environment. Avoid extreme temperatures and high humidity.

## TROUBLESHOOTING

---

Here are some common issues and their solutions for the GODOX V1N flash unit.

- **Flash not firing:** Check battery level, ensure the flash is securely mounted, and verify flash mode and wireless settings (if applicable).
- **Inconsistent exposure:** Ensure TTL mode is selected or manual power is set correctly. Check for obstructions between the flash and subject.
- **Wireless communication issues:** Verify that all units are on the same channel and ID. Ensure no strong interference sources are nearby.

## Resetting Flash Parameters

If you encounter persistent issues or wish to revert all settings to factory defaults:

1. Long-press the second and third buttons simultaneously (often 'SYNC' and 'FEB' or similar) until 'RESET' appears on the display.
2. Confirm the reset to restore default parameters.

## Locking the Control Panel

To prevent accidental changes to settings during use, you can lock the control panel:

1. Long-press the 'MENU' button until 'LOCKED' appears on the display.

2. Repeat the process to unlock the control panel.

Clearing Menu Settings

To clear specific menu settings without a full reset:

1. Navigate to the custom function (C.Fn) menu.
2. Long-press the 'CLEAR' button (indicated on the display) until 'OK' appears to clear the menu settings.

SPECIFICATIONS

Feature	Detail
Brand	GODOX
Model Number	Godox V1N
Compatible Mountings	ISO (Nikon)
Camera Flash Type	External
Flash Sync Speed	1/8000s (HSS)
Connectivity Technology	2.4G Wireless
Power Output	76Ws
Battery	7.2V/2600mAh Lithium-ion
Full Power Shots	Approx. 480
Recycle Time	Approx. 1.5s
Item Weight	1.98 pounds
Package Dimensions	8.86 x 8.15 x 4.06 inches

WARRANTY & SUPPORT

GODOX products are designed for reliability and performance. For warranty information, please refer to the documentation included with your purchase or visit the official GODOX website. For technical support, troubleshooting assistance, or service inquiries, please contact GODOX customer service through their official channels.