

IHFMPFKJ T420HW04 V0 42T06-C03

IHFMPFKJ T-CON Board T420HW04 V0 42T06-C03 Instruction Manual

Model: T420HW04 V0 42T06-C03

1. INTRODUCTION

This instruction manual provides essential information for the installation, operation, and maintenance of the IHFMPFKJ T-CON Board, model T420HW04 V0 42T06-C03. This board is a critical component for display equipment, specifically designed for various 42-inch television models, including those from Changhong, TCL, and Hisense. It is intended to replace a faulty T-CON board to restore proper display functionality.

2. SAFETY INFORMATION

Warning: Always disconnect the television from the power source before attempting any installation or repair. Working with electronic components can be hazardous and may result in electric shock or damage to the equipment if not performed correctly. If you are not confident in performing the installation, seek assistance from a qualified technician.

- Ensure the TV is unplugged from the wall outlet.
- Discharge any residual power by pressing the power button on the TV for a few seconds after unplugging.
- Handle the T-CON board by its edges to avoid touching sensitive components and static discharge.
- Use appropriate tools for disassembly and reassembly.

3. PRODUCT OVERVIEW

The T-CON (Timing Controller) board is responsible for processing video signals from the main board and converting them into a format that the LCD panel can understand. It synchronizes the data and clock signals to ensure a clear and stable image display. This specific model, T420HW04 V0 42T06-C03, is designed for compatibility with a range of 42-inch TV panels.



Figure 3.1: Top view of the T-CON Board T420HW04 V0 42T06-C03, showing various integrated circuits and connectors.



Figure 3.2: Angled perspective of the T-CON Board, highlighting its compact design and component layout.

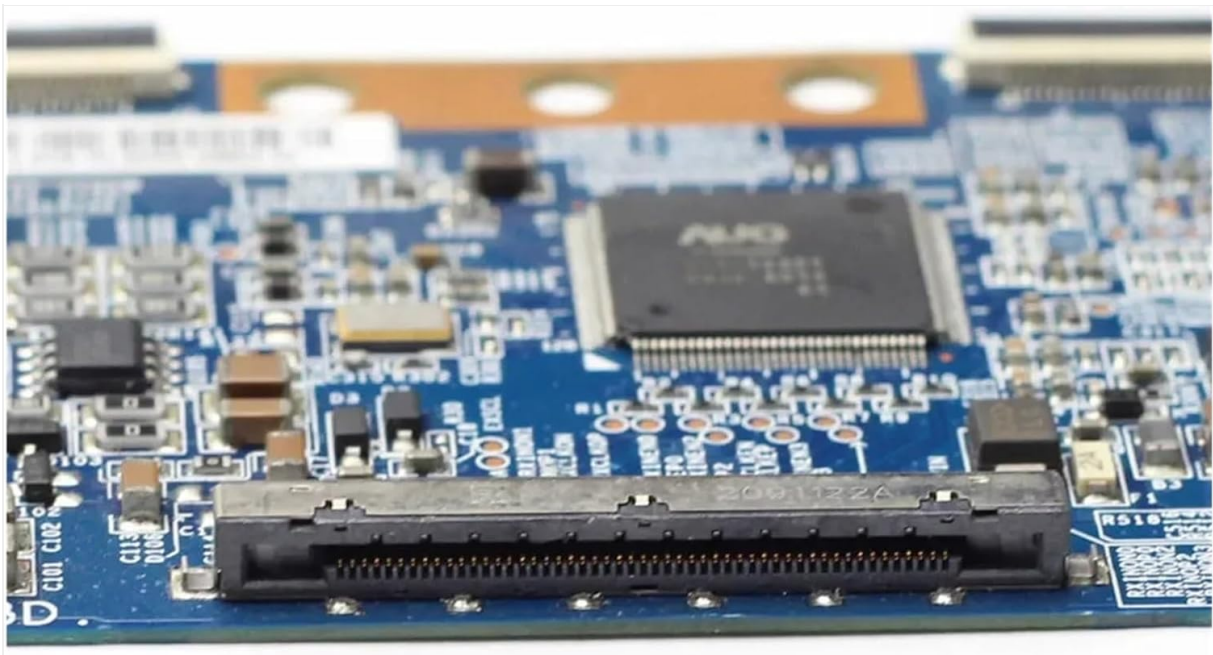


Figure 3.3: Detailed view of a ribbon cable connector on the T-CON Board, crucial for connecting to the LCD panel.

4. SPECIFICATIONS

Feature	Detail
Model Number	T420HW04 V0 42T06-C03
Brand	IHFMPFKJ

Feature	Detail
Compatibility	Changhong, TCL, Hisense, and other 42-inch TV models using T420HW04 V0 or 42T06-C03 boards.
Item Weight	1.76 ounces (approximately 50 grams)
Package Dimensions	0.39 x 0.39 x 0.39 inches (1 x 1 x 1 cm) <i>-Note: These dimensions appear to be placeholder values and may not reflect the actual product size.</i>
Included	T-CON Board with Cables

5. SETUP AND INSTALLATION

Replacing a T-CON board requires careful handling and basic technical knowledge. It is recommended that this procedure be performed by individuals experienced in electronics repair.

1. Preparation:

- Ensure the television is completely disconnected from all power sources and external devices.
- Place the TV face down on a soft, clean surface to prevent screen damage.
- Gather necessary tools, such as screwdrivers, plastic prying tools, and an anti-static wrist strap.

2. Access the T-CON Board:

- Carefully remove the back cover of the television. The exact procedure varies by TV model.
- Locate the existing T-CON board. It is typically a rectangular circuit board positioned at the top or bottom center of the LCD panel, often covered by a metal shield.

3. Disconnect the Old Board:

- Gently disconnect the ribbon cables (LVDS cables) connecting the T-CON board to the main board and the LCD panel. These usually have small locking mechanisms that need to be carefully unlatched.
- Unscrew any mounting screws securing the old T-CON board.
- Carefully remove the old T-CON board.

4. Install the New Board:

- Position the new IHFMPFKJ T-CON Board (T420HW04 V0 42T06-C03) in the same location as the old one.
- Secure it with the appropriate screws.
- Reconnect all ribbon cables. Ensure they are fully seated and their locking mechanisms are engaged. Improper connection can lead to display issues.

5. Reassembly and Testing:

- Before fully reassembling the TV, temporarily connect the power cable and turn on the TV to check if the display is functioning correctly.
- If the display is normal, disconnect power again and reattach the back cover of the television.
- Reconnect all external devices and power.

Note: This product variant includes the necessary cables for installation. Ensure all connections are firm and correct.

6. OPERATING INSTRUCTIONS

Once correctly installed, the T-CON board operates automatically as an integral part of your television's display system. It requires no user interaction for its function. Its primary role is to ensure the accurate and timely transmission of video data to the LCD panel, resulting in a clear and stable picture.

After installation, you may need to access your TV's service menu (if available and you have the expertise) to fine-tune display parameters such as brightness, contrast, and resolution, to optimize viewing comfort. Refer to your television's specific user manual for instructions on accessing and adjusting these settings.

7. MAINTENANCE

The IHFMPFKJ T-CON Board is a sealed electronic component and does not require routine user maintenance. To ensure its longevity and optimal performance:

- Keep the television in a clean, dust-free environment.
- Ensure adequate ventilation around the television to prevent overheating.
- Avoid exposing the television to extreme temperatures or humidity.
- Do not attempt to clean the T-CON board directly with liquids or abrasive materials.

8. TROUBLESHOOTING

If you experience display issues after replacing the T-CON board, consider the following troubleshooting steps:

- **No Picture or Distorted Image:**
 - Verify that all ribbon cables (LVDS cables) are securely connected to both the T-CON board and the LCD panel. Ensure the locking mechanisms are properly engaged.
 - Check for any visible damage to the ribbon cables or connectors.
 - Confirm that the new T-CON board is the correct model for your television.
- **Incorrect Colors or Brightness:**
 - Access your TV's picture settings menu and perform a factory reset or adjust individual parameters like brightness, contrast, and color balance.
 - Ensure the input source is functioning correctly.
- **Intermittent Display Issues:**
 - Re-check all connections for looseness.
 - Ensure the TV is not overheating.

Replacing a faulty T-CON board is a common solution to restore normal TV operation, extend the TV's lifespan, and provide a more economical repair option compared to purchasing a new television. If issues persist, professional diagnosis is recommended.

9. WARRANTY AND SUPPORT

For warranty information or technical support regarding your IHFMPFKJ T-CON Board T420HW04 V0 42T06-C03, please refer to the seller's return policy or contact the manufacturer directly through their official channels. Keep your purchase receipt as proof of purchase.

