

[Manuals.plus](#) /

› [Zingbabu](#) /

› Zingbabu 3 Gallon Fish Tank with Filter and LED Light (Model ZB-ZJYG20-30) Instruction Manual

Zingbabu ZB-ZJYG20-30

Zingbabu 3 Gallon Fish Tank with Filter and LED Light

Model: ZB-ZJYG20-30

INTRODUCTION

Thank you for choosing the Zingbabu 3 Gallon Fish Tank, Model ZB-ZJYG20-30. This desktop aquarium starter kit is designed to provide a healthy and engaging environment for small freshwater fish. It features an integrated filtration system, multi-color LED lighting, and a durable, transparent acrylic construction for a 360-degree view. Please read this manual thoroughly before setup and operation to ensure proper use and maintenance of your aquarium.

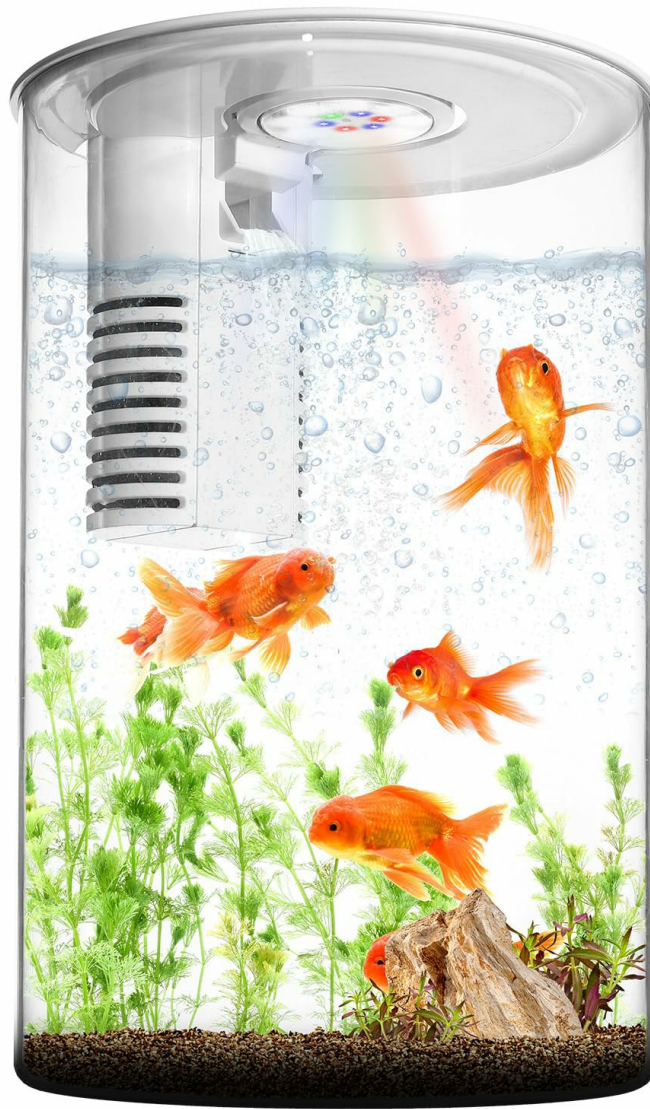


Image: The Zingbabu 3 Gallon Fish Tank, showcasing its compact design and integrated lighting.

PRODUCT FEATURES

- **All-in-One Design:** A compact 3-gallon tank with a built-in filter and full-spectrum LED light, eliminating the need for additional equipment. Ideal for betta fish, guppies, or other small freshwater species.
- **7-Color LED Lighting:** Energy-efficient LED system with 5050 high-brightness bulbs and waterproof, glare-free convex lenses. Choose from daylight white, cool blue, emerald green, warm amber, aqua teal, violet purple, or ruby red to customize ambiance.
- **Advanced Dual Fence Filtration:** Features a two-end fence inlet, dual filter screens, and an outlet designed to mimic natural river flow, enhancing water purification and aeration. High-density mesh effectively traps debris.
- **Durable Acrylic Construction:** Premium impact-resistant, round tank with glass-like clarity. It is 100% leak-proof and made from non-toxic materials, ensuring pet safety. Curved edges prevent injury, making it suitable for various environments.

SAFETY INFORMATION

This aquarium is constructed from high-quality, impact-resistant acrylic, designed to be 100% leak-proof and non-toxic for aquatic life. The curved edges minimize the risk of injury. Always ensure the tank is placed on a stable, level surface away from direct sunlight or heat sources. Keep electrical components, such as the power adapter, dry and away from water to prevent electrical hazards. Do not submerge the power adapter in water.

SETUP INSTRUCTIONS

1. **Unpack Components:** Carefully remove all items from the packaging. Verify that all parts are present: acrylic tank, filter unit with LED light, filter media, and power adapter.
2. **Position the Tank:** Place the tank on a sturdy, level surface capable of supporting the weight of 3 gallons of water plus decorations. Ensure it is near a power outlet but away from direct sunlight, drafts, or heat sources.
3. **Install Filter Media:** The filter unit contains two slots for filter media. Gently slide the provided filter sponges into these slots.
4. **Place Filter Unit:** Insert the filter unit into the designated area within the tank. Ensure it is securely seated.
5. **Add Substrate and Decorations (Optional):** Rinse any gravel, sand, or decorations thoroughly before placing them in the tank.
6. **Fill with Water:** Slowly fill the tank with dechlorinated water to the recommended level, typically just below the filter unit's outlet. Use a water conditioner to remove chlorine and chloramines.
7. **Connect Power:** Plug the power adapter into the filter unit and then into a wall outlet. The LED light and filter pump will activate.
8. **Cycle the Tank:** Before adding fish, allow the tank to cycle for several days to a few weeks to establish beneficial bacteria. Consult a local aquarium expert for proper cycling procedures.



Image: Close-up view of the filter unit, showing its design and placement within the tank.

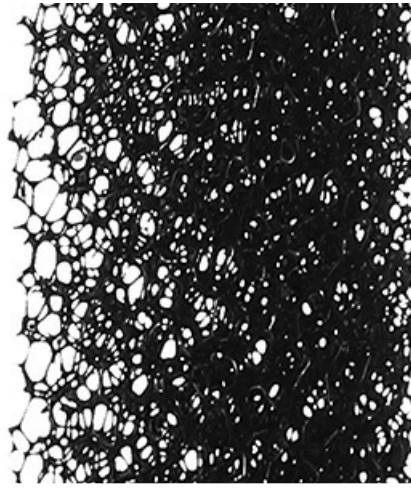


Image: Detailed view of the high-density filter media, designed to trap debris.

OPERATING INSTRUCTIONS

LED Lighting Control

The Zingbabu fish tank features a multi-color LED lighting system controlled by a remote. The remote allows you to select from 7 distinct colors and adjust brightness levels.

- **Power On/Off:** Use the power button on the remote to turn the lights on or off.
- **Color Selection:** Press the color buttons (Red, Green, Blue, White, etc.) to choose your desired light color. Available colors include daylight white, cool blue, emerald green, warm amber, aqua teal, violet purple, and ruby red.
- **Brightness Adjustment:** Use the brightness up/down buttons to increase or decrease the light intensity.
- **Mode Selection:** The remote may include buttons for various lighting modes such as Flash, Strobe, Fade, or Smooth, which cycle through colors or effects.

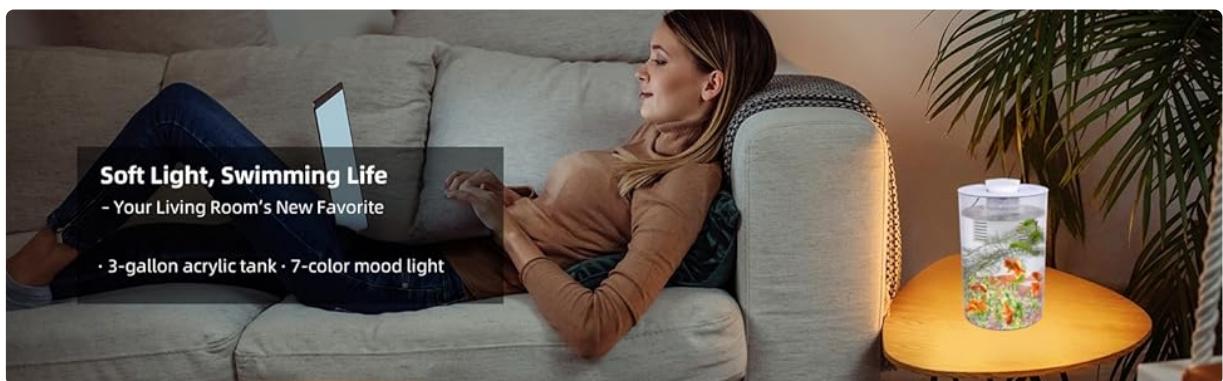


Image: The remote control for the LED lighting, illustrating various color and mode options.



Image: Examples of different lighting effects and brightness levels achievable with the LED system.

Filtration System

The integrated dual fence filtration system continuously circulates and purifies the water. Water is drawn through the base of the filter, passes through the filter media to trap debris, and is then released back into the tank via an outlet designed to create a gentle flow, mimicking natural river conditions and providing aeration.

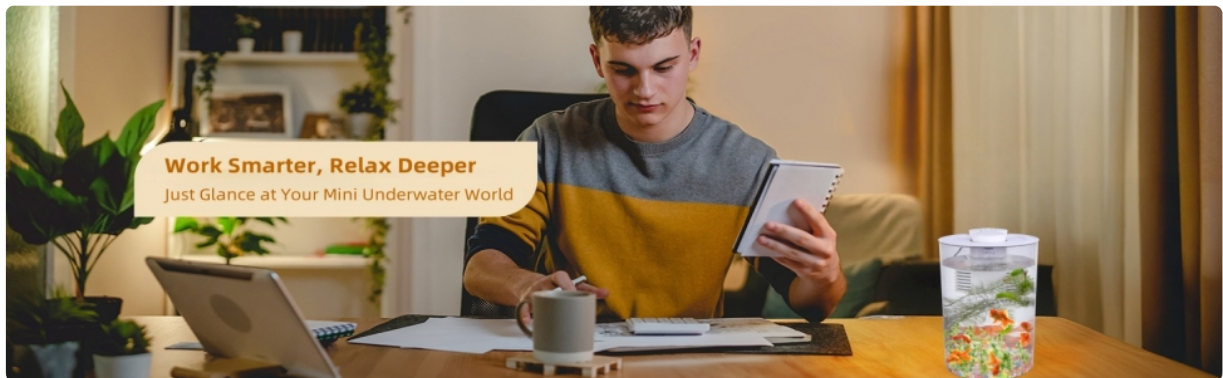


Image: Diagram showing the water circulation path through the filter, from inlet to outlet.



Image: The filter unit actively circulating water and generating small bubbles for aeration.

MAINTENANCE

- **Regular Water Changes:** Perform partial water changes (25-30%) weekly or bi-weekly, depending on fish load and water quality. Always use dechlorinated water.
- **Filter Media Cleaning/Replacement:** The filter sponges should be rinsed regularly (e.g., weekly) in

old tank water to remove trapped debris without destroying beneficial bacteria. Replace filter media every 2-4 weeks or as needed, depending on water clarity and flow rate.

- **Tank Cleaning:** Wipe down the inside and outside of the acrylic tank as needed to remove algae or water spots. Avoid abrasive cleaners that can scratch the acrylic.
- **Check Water Parameters:** Periodically test water parameters (ammonia, nitrite, nitrate, pH) to ensure a healthy environment for your fish.

TROUBLESHOOTING

Problem	Possible Cause	Solution
Filter not working / Weak flow	Clogged filter media, air in pump, power issue.	Clean or replace filter media. Ensure pump is fully submerged and free of air. Check power connection.
LED lights not working	Power issue, remote battery dead, LED unit malfunction.	Check power connection. Replace remote battery. Ensure LED unit is properly connected.
Cloudy water	New tank syndrome (bacterial bloom), overfeeding, insufficient filtration, dirty filter media.	Perform partial water change. Reduce feeding. Clean/replace filter media. Ensure proper tank cycling.
Unpleasant odor	Accumulation of waste, decaying food, poor water quality.	Perform water change and gravel vacuuming. Remove uneaten food. Clean filter.

SPECIFICATIONS

Model: ZB-ZJYG20-30

Tank Volume: 3 Gallons

Material: Acrylic

Shape: Cylindrical

Item Dimensions (L x W x H): Approximately 12 x 8.75 x 8.5 inches (Package Dimensions)

Item Weight: 9.6 ounces

Lighting: 7-Color LED (Daylight White, Cool Blue, Emerald Green, Warm Amber, Aqua Teal, Violet Purple, Ruby Red)

Filtration: Advanced Dual Fence Filtration System

Included Components: Tank, Filter Unit with LED Light, Filter Media, Power Adapter

Special Features: Eye Protection, Self Cleaning, Transparent, 360° View

WARRANTY INFORMATION

This Zingbabu product comes with a **one-year warranty** from the date of purchase. This warranty covers manufacturing defects and malfunctions under normal use. It does not cover damage caused by misuse, accidents, unauthorized modifications, or improper maintenance. Please retain your proof of purchase for warranty claims.

CUSTOMER SUPPORT

For any questions, concerns, or technical assistance regarding your Zingbabu 3 Gallon Fish Tank, please contact our customer support team. Refer to the product packaging or the retailer's website for the most current contact information. When contacting support, please have your product model number (ZB-ZJYG20-30) and proof of purchase available.