

Nelko PP01

Nelko PP01 Portable Photo Printer Instruction Manual

1. INTRODUCTION

Thank you for choosing the Nelko PP01 Portable Photo Printer. This compact inkjet printer allows you to print vivid, full-color, sticky-backed photos directly from your smartphone. Please read this manual carefully before use to ensure proper operation and to maximize your printing experience. Always prioritize safety and follow all instructions provided.

2. WHAT'S IN THE BOX

Your Nelko PP01 Portable Photo Printer package includes the following items:

- 1 x Nelko PP01 Mini Photo Printer
- 1 x Ink Cartridge
- 20 x Photo Paper
- 1 x USB Cable
- 1 x User Manual
- 1 x Guide Card



Image: The Nelko PP01 Portable Photo Printer and its included accessories, neatly arranged. This includes the printer unit, an ink cartridge, a pack of photo paper, a USB-C cable, a user manual, and a guide card.

3. SETUP

3.1. Charging the Printer

Before first use, ensure the printer is fully charged. Connect the provided USB cable to the printer's charging port and a compatible USB power adapter (not included). The indicator lights will show charging status.

3.2. App Download & Bluetooth Connection

1. Download the "Nelko" APP from Google Play Store (for Android) or the App Store (for iOS).
2. Turn on the power button on the right side of the printer.
3. Turn on Bluetooth on your smartphone.
4. Open the Nelko APP and connect to the printer via Bluetooth.

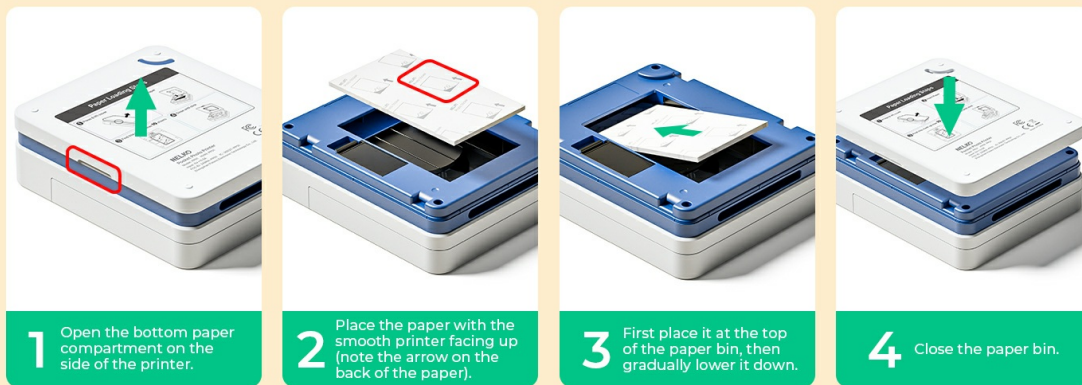


Image: A smartphone screen displaying the Nelko app, with arrows pointing to the printer and the Bluetooth connection icon, illustrating the seamless Bluetooth 5.0 connectivity.

Video: A step-by-step tutorial demonstrating how to connect the Nelko PP01 printer to an Android smartphone via the Nelko app's Bluetooth function.

3.3. Loading Photo Paper

1. Open the bottom paper compartment on the side of the printer.
2. Place the 2x3" photo paper with the smooth surface facing downwards. Ensure the first paper is at the bottom.
3. Gently lower the paper into the bin.
4. Close the paper bin.



Image: A visual guide showing the four steps to correctly load photo paper into the Nelko PP01 printer's bottom compartment.

3.4. Installing Ink Cartridge

1. Turn on the printer.
2. Pull up the top cover and wait for the ink cartridge tray to center.
3. Tear off the ink cartridge packaging and protective tape.
4. Do not touch the chip and nozzles of the ink cartridge.
5. Place the ink cartridge into the designated slot.
6. Close the top cover.



Image: An exploded view of the Nelko PP01 printer showing the placement of the ink cartridge and paper bin, highlighting its internal components.

4. OPERATING THE PRINTER

4.1. Basic Printing Steps

1. Ensure the printer is charged, paper is loaded, and the ink cartridge is installed.
2. Connect your smartphone to the printer via the Nelko APP (Bluetooth).
3. Select a photo from your smartphone gallery within the Nelko APP.
4. Use the app's editing features if desired.
5. Tap the "Print" button for instant printing.

Image: A person using the Nelko app on a smartphone to edit and print a photo, with the Nelko PP01 printer actively printing a small photo.

Video: A detailed tutorial on how to use the Nelko PP01 Portable Photo Printer, covering basic printing functions and app navigation.

4.2. Using the Nelko App Features

The Nelko app offers various features to enhance your photos before printing:

- **Editing Tools:** Adjust brightness, contrast, and other photo parameters.
- **Creative Options:** Add frames, filters, graffiti, and interesting borders.
- **Stickers & Text:** Personalize your snaps with cool stickers and funny text.
- **Collages:** Create multi-photo layouts for scrapbooking or journaling.
- **AI Image Generation:** Utilize AI to create unique images from text prompts.



Image: A smartphone screen showcasing the Nelko Mini Print app's various editing features, including border, crop, pattern, text, filter, graffiti, mosaic, and brightness adjustments.



Image: A smartphone screen demonstrating the AI Image Generation feature within the Nelko app, where users can input text prompts to create unique images.

5. MAINTENANCE

- If the printer is idle for a long time, fully charge it before use.
- Wipe the ink cartridge head vertically to prevent clogging.

6. TROUBLESHOOTING

6.1. Print Quality Issues

- **Resolution:** The printer's resolution is 600x600 dpi.
- **Environmental Conditions:** Print under recommended temperature and humidity conditions.
- **Ink Cartridge:** If the ink cartridge has been exposed to air for a long time and the ink has dried up, use a lint-free paper or wet wipe to gently wipe the nozzle plate vertically. Do not touch the contacts or wipe back and forth.
- **Low Battery:** If the machine is running low on battery, fully charge it before printing.

6.2. Paper Jam Issues

- Ensure the number of photo papers does not exceed 10.
- Place the photo papers flat without any wrinkles.
- Avoid using damp, wrinkled, curled, or damaged paper.
- Carefully check if there are any paper scraps inside the printer. Paper scraps may cause paper jams.

6.3. Paper Recognition Issues

- Reload the paper and place the first paper at the bottom.



Image: A frequently asked questions (FAQ) section for the Nelko PP01 Photo Printer, addressing common issues like print quality, paper size, and paper jams.

Video: A comprehensive FAQ video for the Nelko Smartphone Photo Printer, providing solutions to common user queries and operational challenges.

7. SPECIFICATIONS

Feature	Detail
Brand	Nelko
Model Name	PP01
Printing Technology	Inkjet
Connectivity Technology	Bluetooth

Printer Output	Color
Maximum Color Print Resolution	600 dpi
Print Media	Glossy photo paper
Sheet Size	52x90mm (2x3 inches)
Max Input Sheet Capacity	30
Item Weight	1.08 pounds (0.49 kg)
Product Dimensions	6.65 x 4.5 x 1.9 inches
Batteries	1 x 9V battery (included)

8. WARRANTY & SUPPORT

For warranty information, technical support, or further assistance, please refer to the full user manual included in your product packaging or visit the official Nelko website. You can also find additional tutorial videos and FAQs within the Nelko APP.