

Manuals+

[Q & A](#) | [Deep Search](#) | [Upload](#)

manuals.plus /

› [Kohree](#) /

› [Kohree RV Fresh Water Pump 7GPM 70PSI \(Model KR2134\) - Instruction Manual](#)

Kohree KR2134

Kohree RV Fresh Water Pump 7GPM 70PSI (Model KR2134) - Instruction Manual

Brand: Kohree | Model: KR2134

INTRODUCTION

This manual provides essential information for the safe and efficient operation, installation, and maintenance of your Kohree 7GPM 70PSI 12V DC Fresh Water Pump. Please read these instructions thoroughly before installation and use to ensure optimal performance and longevity of the product.

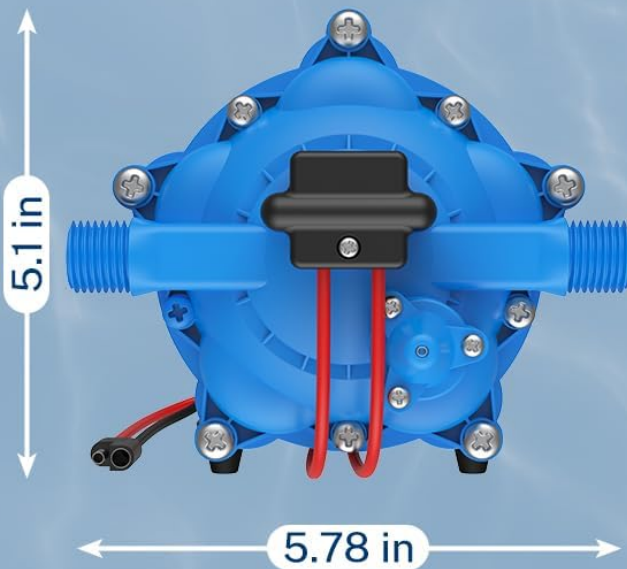
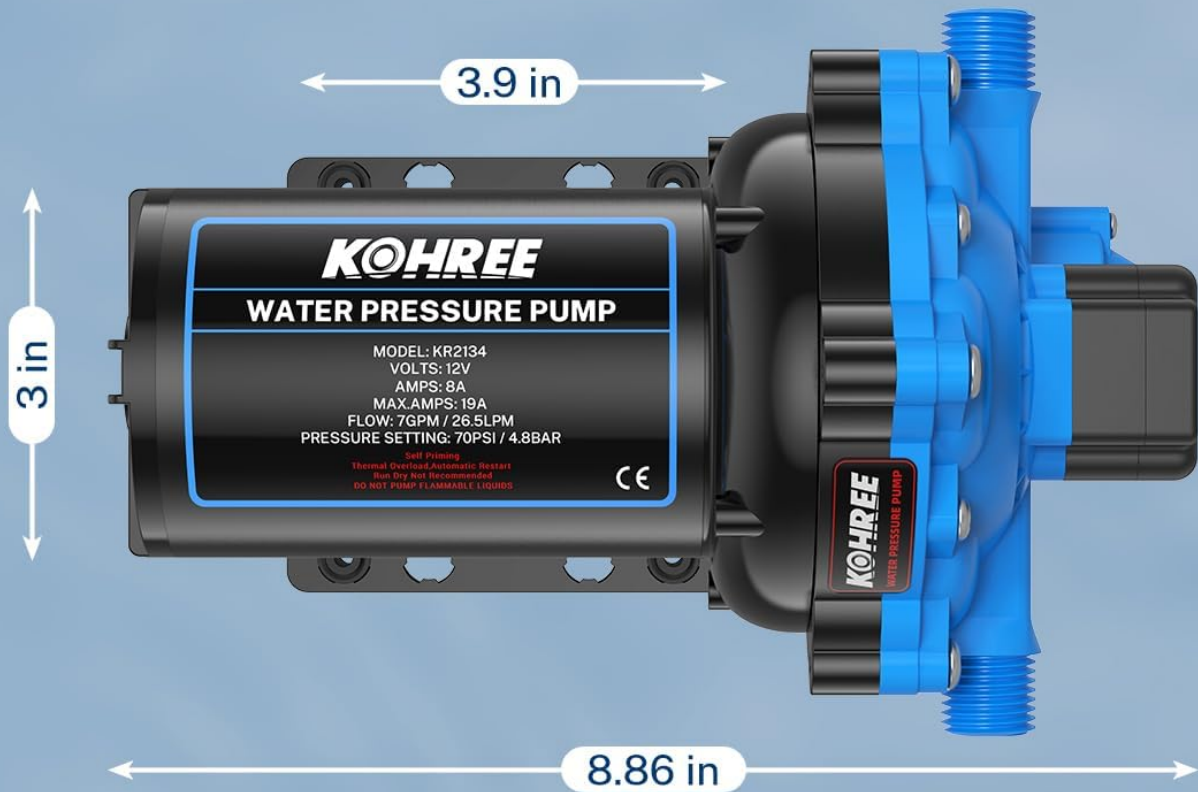


Image: The Kohree RV Fresh Water Pump, blue and black, shown with its included accessories: three hose adapters, two strainers, and a roll of Teflon tape.

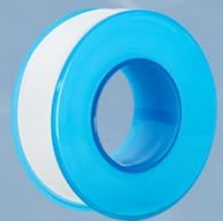
PACKAGE CONTENTS

- 1 x Kohree 12V RV Water Pump
- 3 x Hose Adapters (1/2 inch outer diameter)
- 2 x Strainers (50 mesh)
- 1 x Teflon Tape

Product Size



50 Mesh Strainer



Teflon Tape



Outer Diameter: 1/2"

Image: A diagram illustrating the dimensions of the Kohree water pump (approximately 12"L x 5.51"W x 4.72"H) and close-ups of the 50 mesh strainer, Teflon tape, and 1/2 inch outer diameter hose adapters.

SAFETY INFORMATION

- Always disconnect power before performing any installation or maintenance.
- Wear appropriate personal protective equipment, such as gloves, when handling electrical connections.
- Ensure all connections are secure and leak-proof to prevent water damage or electrical hazards.

- Do not operate the pump with flammable liquids.
- The pump is designed for fresh water use only.

SETUP AND INSTALLATION

1. **Mounting:** Secure the pump in a dry, accessible location using the mounting feet. The pump features a metal base with rubber feet for anti-vibration.
2. **Plumbing Connections:**
 - Connect the inlet side of the pump to your fresh water tank using appropriate hoses and one of the provided hose adapters.
 - Install the 50 mesh strainer on the inlet side to prevent debris from entering the pump.
 - Connect the outlet side of the pump to your RV's water distribution system.
 - Use the included Teflon tape on all threaded connections to ensure a leak-proof seal.
3. **Electrical Connections:**
 - Connect the pump to a 12V DC power source. The pump requires an 18-amp fuse for protection.
 - Ensure correct polarity: red wire to positive (+), black wire to negative (-).
 - Verify all electrical connections are tight and insulated.
4. **Priming:** The pump is self-priming up to 10 feet vertically and 155 feet horizontally. Open a faucet in your system to allow air to escape and the pump to draw water.



Image: Components for installation, including the 50 mesh strainer, various hose adapters, and Teflon tape, essential for secure and leak-free connections.

OPERATING INSTRUCTIONS

The Kohree water pump features an automatic start-stop function controlled by a heavy-duty pressure switch. When a faucet is opened, the pump will automatically turn on to provide water flow. When all faucets are closed, the pump will build pressure and automatically shut off.

- Ensure the water tank has sufficient water before operating the pump to prevent dry running for extended periods.
- The pump is designed to run dry for short periods without damage, thanks to its thermal overload protection.
- The pump delivers a flow rate of 7 gallons per minute (GPM) at a pressure of 70 PSI.



Image: A visual comparison showing improved water flow from a faucet after installing the Kohree 7GPM 70PSI water pump.

MAINTENANCE

- **Strainer Cleaning:** Regularly inspect and clean the 50 mesh strainer to prevent blockages and maintain optimal water flow.
- **Leak Inspection:** Periodically check all plumbing connections for leaks. Re-apply Teflon tape or tighten connections as needed.
- **Winterization:** In freezing temperatures, ensure the pump and water lines are properly drained or winterized according to your RV's recommendations to prevent damage.
- **General Inspection:** Check the pump for any signs of wear or damage. Ensure the mounting is secure and the electrical connections are intact.

TROUBLESHOOTING

If you encounter issues with your Kohree water pump, refer to the following common troubleshooting steps:

- **Pump Not Running:**
 - Check the 12V DC power supply and fuse. Ensure the fuse is not blown (an 18-amp fuse is recommended).
 - Verify all electrical connections are secure.
 - Ensure there is water in the tank and the inlet strainer is not clogged.
- **Pump Runs Continuously (Does Not Shut Off):**
 - Check for leaks in the plumbing system (faucets, connections, water heater). Even small leaks can cause the pump to cycle.
 - Ensure all faucets are completely closed.
 - A faulty pressure switch can cause continuous running. Refer to the video below for testing the pressure switch.
- **Low Water Flow or Pressure:**
 - Check the inlet strainer for clogs.
 - Inspect hoses for kinks or obstructions.
 - Ensure the water tank is not empty.

Testing a Faulty Pressure Switch

If your pump runs continuously or fails to activate, the pressure switch may be faulty. The following video demonstrates how to test the pressure switch. **Caution: This test involves connecting to the power supply. Please be cautious and wear gloves for**

safety.

Your browser does not support the video tag.

Video: A demonstration by Kohree on how to test if the pressure switch of the water pump is faulty. The video shows opening the pressure switch casing, unplugging one wire, and touching it to the other to see if the pump responds, indicating a faulty switch if it starts working.

SPECIFICATIONS


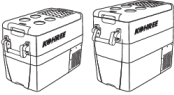




Feature	Detail
Brand	Kohree
Model Number	KR2134
Material	Plastic
Product Dimensions	12"L x 5.51"W x 4.72"H
Power Source	Corded Electric
Maximum Flow Rate	7 Gallons Per Minute (GPM)
Maximum Lifting Height	10 Feet
Voltage	12 Volts (DC)
Pressure Setting	70 PSI
Amperage	7.0 Amps (Max 18A fuse recommended)
Item Weight	7.41 pounds
Special Features	Self-Priming, Five Chamber Diaphragm, Heavy Duty Pressure Switch, Thermal Overload Protection, Runs Dry Safely (short periods)

WARRANTY AND SUPPORT

Specific warranty details are not provided in this manual. For warranty information, technical support, or assistance with your Kohree water pump, please contact Kohree customer service directly or visit their official website. Keep your purchase receipt for warranty claims.

You can often find contact information on the product packaging or through the retailer where the product was purchased.

Related Documents - KR2134

<div><div><div>KOHPREE</div><div>User Manual</div><div></div><div>CAR REFRIGERATOR WITH COMPRESSOR <small>To operate and keep for worldwide car travels</small></div></div></div>	<p>KOHPREE Car Refrigerator User Manual: Features, Operation, and Troubleshooting</p> <p>Comprehensive user manual for the KOHPREE Car Refrigerator with Compressor. Learn about its features, installation, operation, temperature settings, battery protection, troubleshooting, and warranty information.</p>
<div><div><div>KOHPREE</div><div>User Manual</div><div></div><div>CAR REFRIGERATOR WITH COMPRESSOR <small>To operate and keep for worldwide car travels</small></div></div></div>	<p>KOHPREE Car Refrigerator User Manual</p> <p>Comprehensive user manual for the KOHPREE Car Refrigerator, detailing its features, operation, installation, troubleshooting, and warranty information. Suitable for trucks, RVs, camping, and household use.</p>
<div><div><div></div></div></div>	<p>KOHPREE HY1704 RV Leveler User Manual and Technical Specifications</p> <p>This document provides instructions and technical details for the KOHPREE HY1704 RV Leveler, including setup, usage, and FCC compliance information.</p>
<div><div><div></div></div></div>	<p>KOHPREE Car Refrigerator User Manual: Features, Operation, and Troubleshooting Guide</p> <p>Explore the KOHPREE Car Refrigerator user manual for detailed information on its features, operation, safety guidelines, troubleshooting tips, and warranty. Learn how to use your portable dual-zone cooler effectively for travel and home.</p>
<div><div><div><div>KOHPREE</div><div>User Manual</div><div></div><div>CAR REFRIGERATOR WITH COMPRESSOR <small>To operate and keep for worldwide car travels</small></div></div></div></div>	<p>KOHPREE Car Refrigerator User Manual: Features, Operation, and Troubleshooting</p> <p>Comprehensive user manual for the KOHPREE Car Refrigerator with Compressor. Learn about its features, installation, operation, temperature settings, battery protection, troubleshooting, and warranty information.</p>
<div><div><div><div>KOHPREE</div><div>User Manual</div><div></div><div>CAR REFRIGERATOR WITH COMPRESSOR <small>To operate and keep for worldwide car travels</small></div></div></div></div>	<p>KOHPREE Car Refrigerator User Manual</p> <p>Comprehensive user manual for the KOHPREE Car Refrigerator, detailing its features, operation, installation, troubleshooting, and warranty information. Suitable for trucks, RVs, camping, and household use.</p>