

**MTW5840TW0**

# Generic Replacement Parts for Maytag MTW5840TW0 Washer Agitator Cam Dogs Kit

Instruction Manual

## 1. PRODUCT OVERVIEW

This instruction manual provides detailed guidance for the installation and maintenance of the Generic Replacement Parts Kit for Maytag MTW5840TW0 Washer Agitator Cam Dogs. This kit is designed to restore proper agitator function in compatible washing machines by replacing worn or damaged cam dogs and associated components.

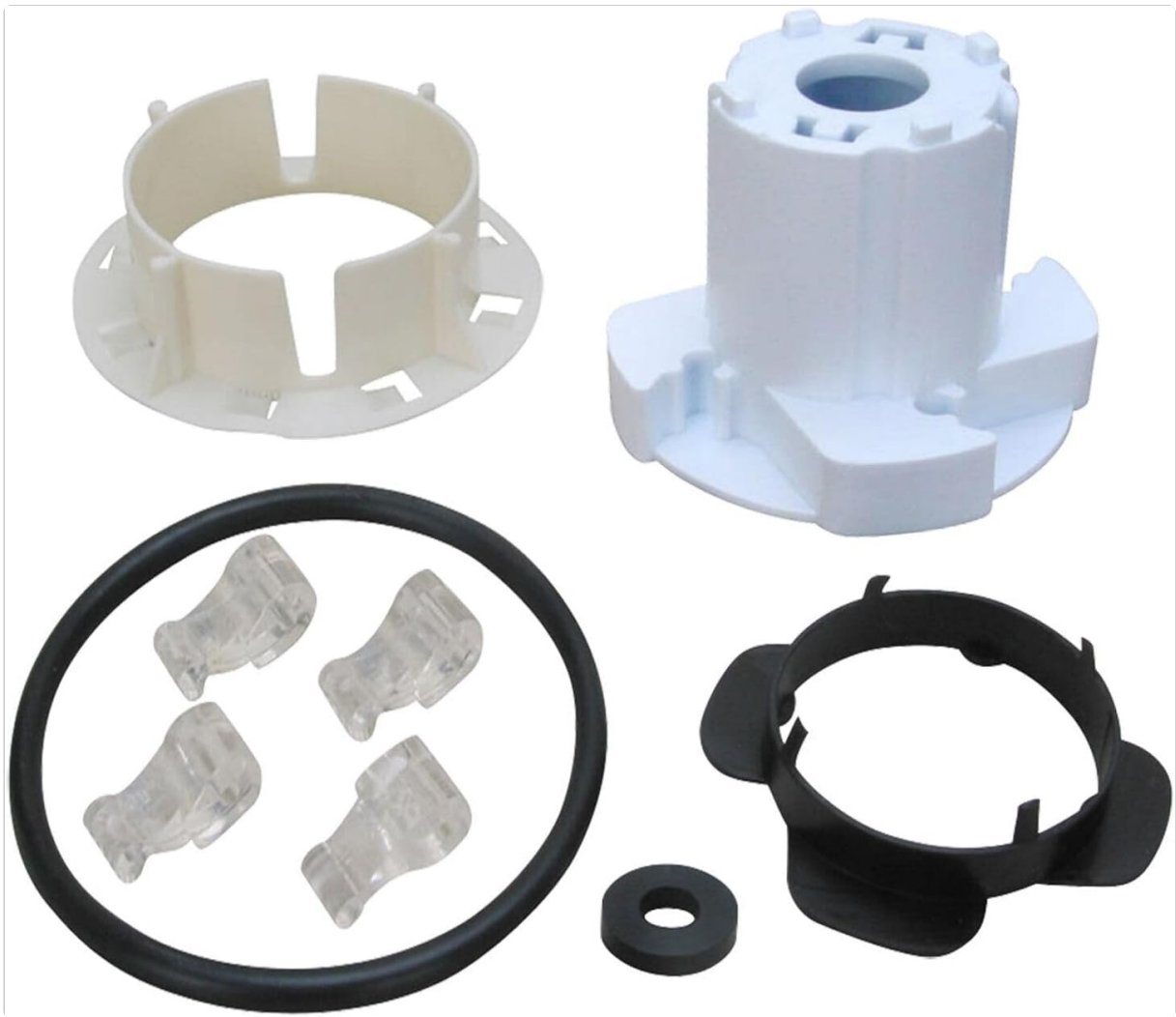
## 2. SAFETY INFORMATION

- Always disconnect power to the washing machine by unplugging it from the electrical outlet before attempting any repairs or installations to prevent electric shock.
- Wear appropriate personal protective equipment, such as gloves and eye protection, during installation to prevent injury.
- If you are unsure about any step in the installation process, consult a qualified appliance repair technician.
- Keep small parts away from children to prevent choking hazards.

## 3. PACKAGE CONTENTS

The kit includes the following components:

- Agitator Cam (white plastic)
- Drive Block (white plastic)
- Cam Dogs (4 clear plastic pieces)
- Rubber O-ring (black)
- Washer (black rubber)



*The image above displays all components included in the replacement kit.*

## 4. SETUP AND INSTALLATION

### Compatibility Check

Before beginning, verify that your washing machine model is **Maytag MTW5840TW0**. Appliance parts can appear similar, so confirming the model number is crucial for correct fitment.

### Tools Required

You may need a screwdriver, pliers, and potentially a socket wrench, depending on your specific washing machine configuration.

### Installation Steps

1. **Disconnect Power:** Unplug the washing machine from the electrical outlet to prevent electric shock.
2. **Access Agitator:** Open the washing machine lid. The agitator is the central column in the wash tub.
3. **Remove Agitator Cap:** Locate and remove the agitator cap, usually by prying it off or unscrewing it.
4. **Remove Agitator Bolt:** Inside the agitator, there is typically a bolt securing it to the transmission shaft. Use the appropriate tool to remove this bolt.
5. **Remove Agitator:** Carefully pull the agitator straight up and out of the wash tub. It may require some force.
6. **Disassemble Agitator Base:** Once the agitator is removed, you will see the agitator cam and cam dogs at its base. Disassemble the old components. Note the orientation of the existing parts.

7. **Install New Cam Dogs:** Place the new cam dogs into their designated slots in the agitator base. Ensure they are oriented correctly to engage with the drive block.
8. **Install New Agitator Cam and Drive Block:** Assemble the new agitator cam and drive block according to the original configuration. The rubber O-ring and washer should be placed as per the original setup to ensure a proper seal and fit.
9. **Reinstall Agitator:** Carefully lower the agitator back onto the transmission shaft, aligning it properly.
10. **Secure Agitator:** Reinstall and tighten the agitator bolt.
11. **Replace Agitator Cap:** Place the agitator cap back into position.
12. **Reconnect Power:** Plug the washing machine back into the electrical outlet.
13. **Test Functionality:** Run a short wash cycle to ensure the agitator is functioning correctly.

## 5. OPERATING INSTRUCTIONS

This kit provides replacement parts for the agitator mechanism. No specific operating instructions are required beyond the normal operation of your Maytag MTW5840TW0 washing machine. After installation, ensure the agitator moves freely and effectively during wash cycles.

## 6. MAINTENANCE

Regularly inspect the agitator cam dogs for signs of wear or damage. If the agitator's performance diminishes, or if you hear unusual noises during agitation, inspect these components. Keep the area around the agitator clean and free from debris that could interfere with its movement.

## 7. TROUBLESHOOTING

### Agitator Not Moving or Moving Weakly

- **Check Cam Dogs:** Ensure the cam dogs are installed correctly and are not worn or broken. Worn cam dogs are a common cause of agitator malfunction.
- **Verify Agitator Bolt:** Confirm the agitator bolt is securely tightened. A loose bolt can prevent proper agitator engagement.
- **Inspect Drive Block:** Ensure the drive block is correctly seated and not damaged.
- **Power Supply:** Confirm the washing machine has power and is not in a paused or error state.

### Unusual Noises During Agitation

- **Loose Parts:** Check for any loose components within the agitator assembly.
- **Foreign Objects:** Inspect the wash tub and agitator for any foreign objects that may be causing obstruction or noise.
- **Worn Components:** If noises persist, the agitator cam dogs or other internal agitator components may be excessively worn and require replacement.

## 8. SPECIFICATIONS

- **Product Type:** Washer Agitator Cam Dogs Replacement Kit
- **Compatible Model:** Maytag MTW5840TW0
- **Manufacturer:** Fricparts
- **Part Number:** FRIC-PL-APP-TP-22052025-004463

- **Kit Components:** Agitator Cam, Drive Block, 4 Cam Dogs, Rubber O-ring, Washer
- **Color:** Black/White (referring to the components in the kit)

## 9. WARRANTY INFORMATION

No specific warranty information is provided with this product data. Please refer to the seller or manufacturer's website for details regarding warranty coverage, if any.

## 10. CUSTOMER SUPPORT

For further assistance or inquiries regarding this replacement kit, please contact the seller directly through the platform where the purchase was made. Provide your order number and the product's part number (FRIC-PL-APP-TP-22052025-004463) for efficient support.