



Manuals.plus /

› Fricparts /

› Fricpart-109554 Agitator Cam Dogs Kit for KitchenAid KAWS850LQ1 Washer - Instruction Manual

**Fricparts FRIC-PL-APP-TP-22052025-004330**

# Fricpart-109554 Agitator Cam Dogs Kit for KitchenAid KAWS850LQ1 Washer - Instruction Manual

Compatible Washer Model: KAWS850LQ1 | Part Number: FRIC-PL-APP-TP-22052025-004330

Brand: Fricparts

## 1. PRODUCT OVERVIEW

---

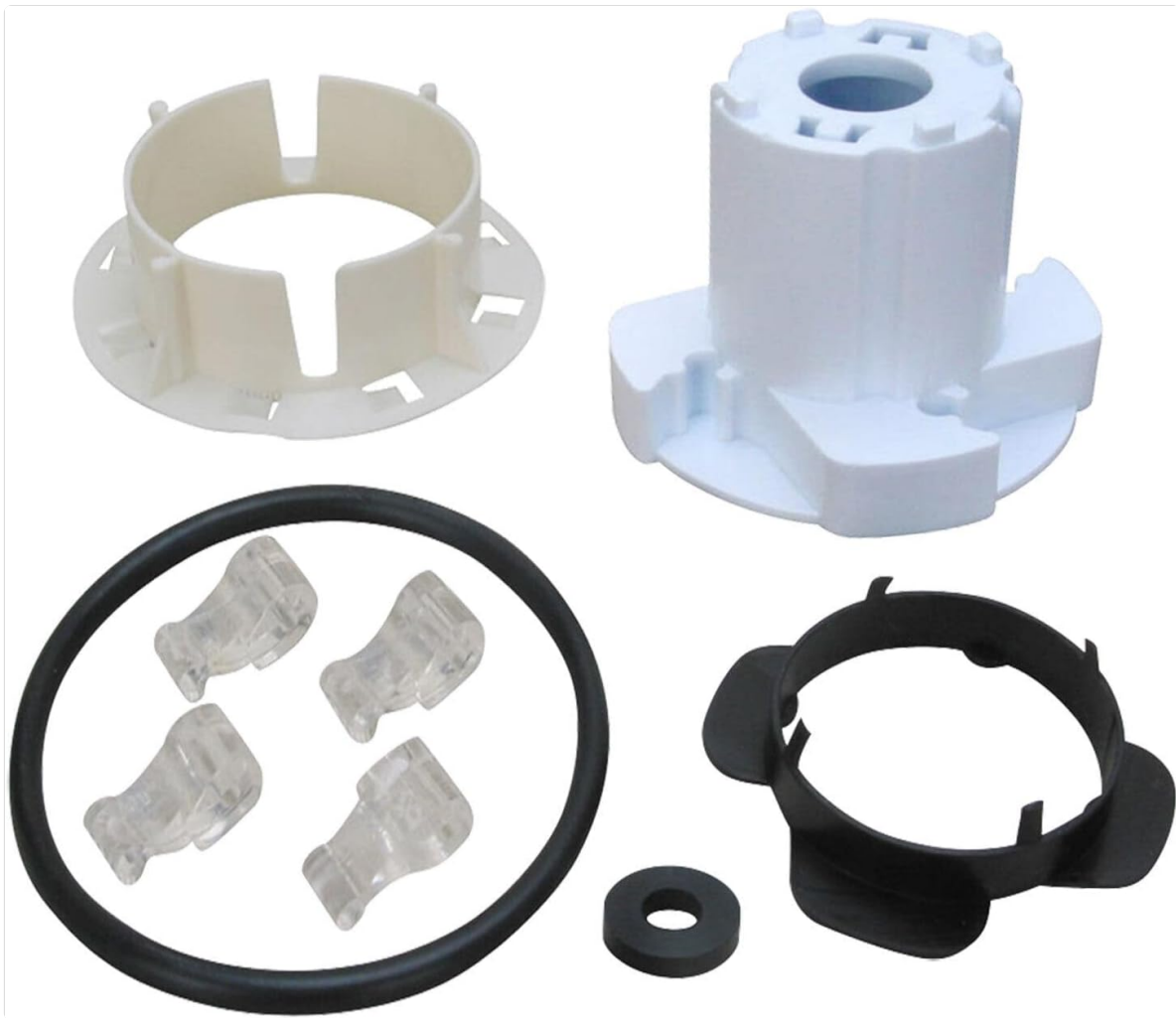
This instruction manual provides guidance for the installation and maintenance of the Fricpart-109554 Agitator Cam Dogs Kit, designed as a replacement part for KitchenAid KAWS850LQ1 washing machines. This kit is essential for the proper functioning of your washer's agitator.

**Important:** Before proceeding with any repair, ensure your washing machine is disconnected from the power supply to prevent electrical shock.

## 2. KIT COMPONENTS

---

The Fricpart-109554 Agitator Cam Dogs Kit includes the following components:



**Image 1:** Overview of the Fricpart-109554 Agitator Cam Dogs Kit. The kit typically includes an agitator cam, a drive block, four cam dogs, a washer/seal, and a retainer ring. These components work together to allow the agitator to move in one direction and freewheel in the other, creating the washing action.

- **Agitator Cam:** A white plastic component, often with a wider base and a narrower top, designed to engage with the cam dogs.
- **Drive Block:** A white plastic component, typically cylindrical with internal splines, that connects the agitator to the transmission shaft.
- **Cam Dogs (4 pieces):** Small, clear plastic pawls that fit into the agitator cam and engage with the drive block.
- **Washer/Seal:** A black rubber O-ring or washer, used for sealing or spacing.
- **Retainer Ring:** A black plastic ring that secures the cam dogs and cam in place.

### 3. SETUP AND INSTALLATION

This section outlines the general steps for replacing the agitator cam dogs. Specific procedures may vary slightly depending on your exact washer model. Refer to your washer's service manual for detailed instructions if available.

1. **Disconnect Power:** Unplug the washing machine from the electrical outlet.
2. **Remove Agitator Cap:** Locate and remove the agitator cap, usually by prying it off or unscrewing it.
3. **Remove Fabric Softener Dispenser (if applicable):** If your agitator has a fabric softener dispenser, remove it.

4. **Remove Agitator Bolt:** Use a socket wrench to remove the bolt securing the agitator to the transmission shaft.
5. **Remove Agitator:** Carefully pull the agitator straight up and out of the washer tub. This may require some force.
6. **Disassemble Agitator Base:** Invert the agitator. You will see the old cam dogs and cam assembly at the base. Remove the retainer ring, then the old cam dogs and cam.
7. **Clean Area:** Clean any debris or residue from the agitator base.
8. **Install New Components:**
  - Place the new agitator cam into position.
  - Insert the four new cam dogs into their respective slots in the cam. Ensure they are oriented correctly.
  - Place the new drive block over the cam dogs and cam.
  - Secure the assembly with the new retainer ring and washer/seal if provided.
9. **Reinstall Agitator:** Carefully lower the agitator back onto the transmission shaft, aligning the splines.
10. **Secure Agitator Bolt:** Reinstall and tighten the agitator bolt.
11. **Reinstall Dispenser and Cap:** Replace the fabric softener dispenser (if applicable) and the agitator cap.
12. **Reconnect Power:** Plug the washing machine back into the electrical outlet.

**Note:** Appliance parts can look similar. Always verify compatibility with your specific washer model (KAWS850LQ1) before installation.

## 4. OPERATING PRINCIPLES (POST-INSTALLATION)

---

After successful installation, the new agitator cam dogs kit will restore the proper washing action of your KitchenAid KAWS850LQ1 washer. The cam dogs allow the agitator to rotate freely in one direction (typically clockwise during agitation) and engage the transmission shaft to move the clothes in the opposite direction (counter-clockwise). This differential movement creates the necessary turbulence for effective cleaning.

If the agitator is not moving correctly or is only spinning in one direction, re-check the installation of the cam dogs and ensure they are seated properly.

## 5. MAINTENANCE

---

The agitator cam dogs are wear-and-tear components. Regular maintenance is generally not required beyond ensuring proper installation. However, if you notice a decline in agitation performance or hear unusual noises from the agitator, inspect the cam dogs for wear, cracks, or breakage. Replacement is recommended if any damage is observed.

To prolong the life of your agitator components:

- Avoid overloading the washing machine, as excessive weight can put strain on the agitator mechanism.
- Ensure no foreign objects (e.g., coins, small toys) are left in pockets, as these can fall into the agitator mechanism and cause damage.

## 6. TROUBLESHOOTING

---

Problem	Possible Cause	Solution
Agitator not moving or only spinning in one direction.	Worn, broken, or incorrectly installed cam dogs.	Inspect cam dogs. Replace if damaged. Ensure correct installation as per Section 3.
Loud clicking or grinding noise during agitation.	Damaged cam dogs or agitator cam.	Disassemble and inspect all components of the kit. Replace any damaged parts.
Poor washing performance.	Agitator not creating sufficient water movement.	Verify agitator movement. If weak or inconsistent, check cam dogs for wear.

## 7. SPECIFICATIONS

---

- **Part Number:** FRIC-PL-APP-TP-22052025-004330 (Fricpart-109554)
- **Compatible Washer Model:** KitchenAid KAWS850LQ1
- **Manufacturer:** Fricparts
- **Material:** Durable plastic and rubber components
- **Color:** Black/White (as per components)
- **Item Package Quantity:** 1 kit

## 8. WARRANTY AND SUPPORT

---

For warranty information or technical support regarding this replacement part, please contact the retailer or manufacturer directly. Keep your purchase receipt as proof of purchase.

It is recommended to consult a qualified appliance technician if you are unsure about any installation steps or encounter persistent issues after replacing the parts.