

[Manuals.plus](#) /

> [Samsung](#) /

> Samsung 65 Inch QLED TV Q7F (Model QA65Q7FAAUXSA) User Manual

Samsung QA65Q7FAAUXSA

Samsung 65 Inch QLED TV Q7F User Manual

Model: QA65Q7FAAUXSA

1. INTRODUCTION

This manual provides essential information for the safe and efficient use of your Samsung 65 Inch QLED TV Q7F (Model QA65Q7FAAUXSA). Please read it thoroughly before operating the device and retain it for future reference.



Image 1.1: Front view of the Samsung 65 Inch QLED TV Q7F, showcasing its slim design and vibrant display.

2. SAFETY INFORMATION

Always follow basic safety precautions when using this television to reduce the risk of fire, electric shock, and injury.

- Do not expose the TV to rain or moisture.
- Do not block ventilation openings.
- Ensure proper grounding for the power cord.
- Keep the TV away from direct sunlight, heat sources, and extreme temperatures.
- Use only specified attachments and accessories.
- Unplug the TV during lightning storms or when unused for long periods.

3. PACKAGE CONTENTS

Verify that all items are present in the box:

- Samsung 65 Inch QLED TV Q7F
- User Manual (this document)
- Remote Control
- Power Cable
- TV Stand Components (if included)

شحن بالطاقة الضوئية صنع ليديم طويلاً

Charged by light built to last

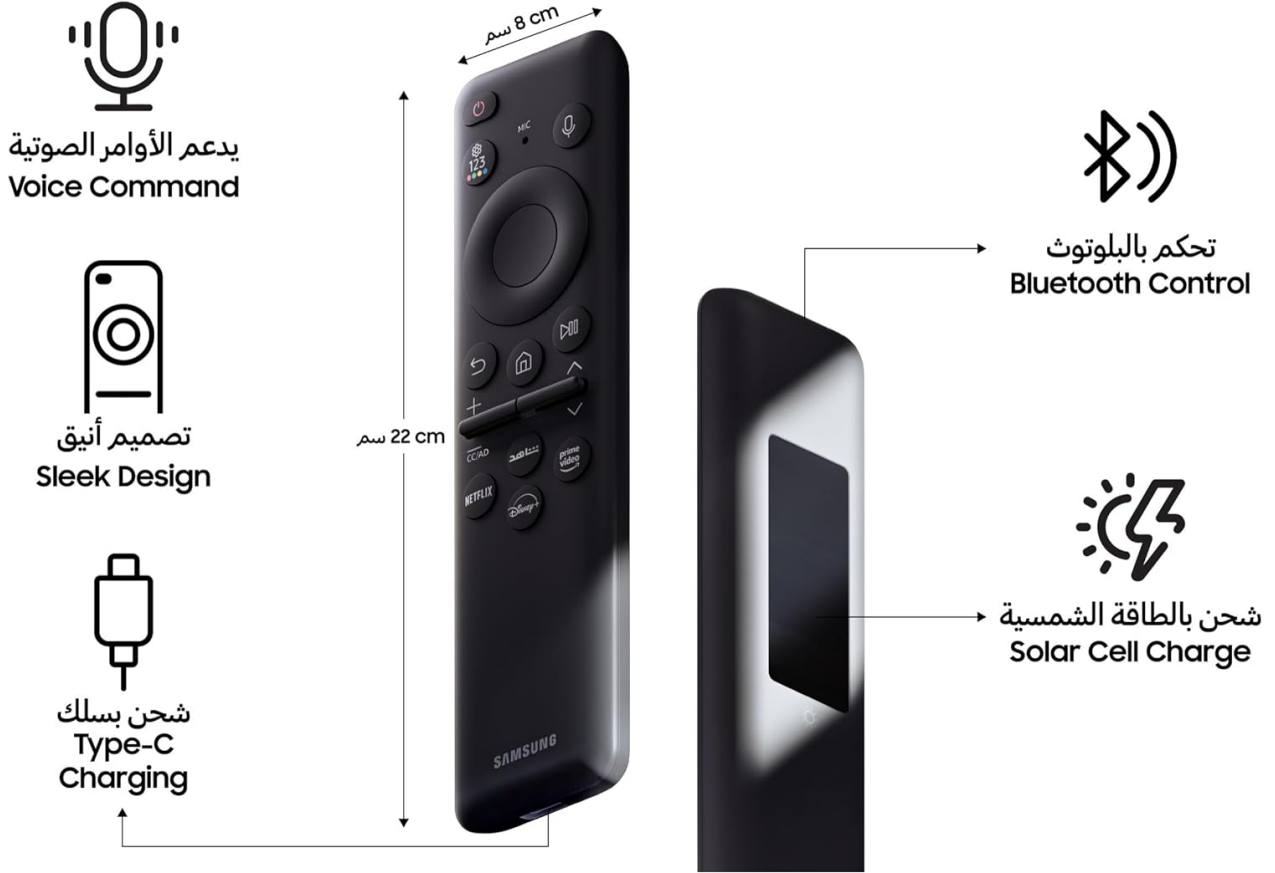


Image 3.1: The included remote control, featuring voice command, Bluetooth connectivity, and solar cell charging.

4. SETUP

4.1 Unpacking

1. Carefully remove the TV from its packaging.
2. Place the TV face down on a soft, flat surface to prevent screen damage.

4.2 Stand Installation (Optional)

If you choose to use the included stand:

1. Attach the stand base to the TV following the instructions in the separate stand assembly guide.
2. Ensure all screws are securely tightened.

4.3 Wall Mounting (Optional)

For wall mounting, use a VESA-compliant wall mount kit (sold separately). Refer to the wall mount kit's instructions for proper installation.



Image 4.1: Product dimensions for planning installation. The TV measures approximately 145.29 cm in width, 83.4 cm in height (without stand), and 6.06 cm in depth.

4.4 Connecting Peripherals

1. **Power:** Connect the power cable to the TV and then to a wall outlet.
2. **HDMI Devices:** Connect external devices (e.g., Blu-ray player, game console) to the HDMI ports.
3. **Network:** For internet access, connect an Ethernet cable to the LAN port or connect wirelessly via Wi-Fi during initial setup.

4.5 Initial Power On & First-Time Setup

1. Press the power button on the remote control or the TV.
2. Follow the on-screen instructions to select your language, country, and connect to your Wi-Fi network.
3. Complete the Smart Hub setup and channel scanning.

5. OPERATING YOUR TV

5.1 Remote Control Functions

Familiarize yourself with the remote control buttons for basic operations like power, volume, channel selection, and Smart Hub navigation.

5.2 Smart TV Features

- **Q4 AI Processor:** The integrated Q4 AI Processor optimizes viewing and sound experiences for 4K content. It enhances picture quality by analyzing and upscaling content to near-4K resolution.



Image 5.1: The Q4 AI Processor, designed to enhance picture and sound quality for 4K TVs.

- **100% Color Volume with Quantum Dot:** Quantum Dot technology delivers a wide spectrum of colors, maintaining accuracy at various brightness levels.

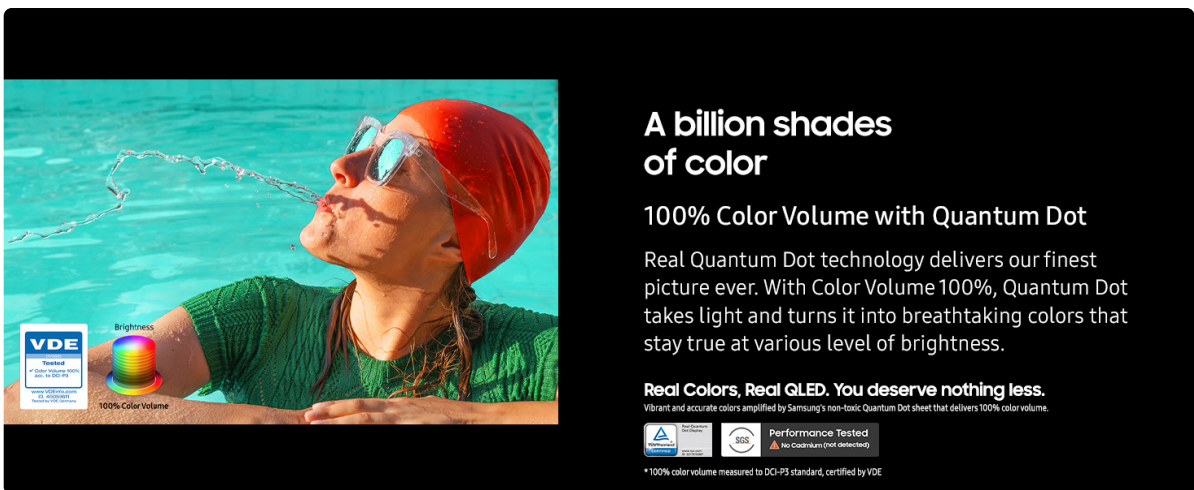


Image 5.2: Visual representation of 100% Color Volume with Quantum Dot, showing vibrant and accurate colors.

- **Samsung Knox Security:** Your TV is secured by Samsung Knox, protecting sensitive data, monitoring IoT devices, and blocking malicious apps and sites. Regular updates ensure ongoing security.

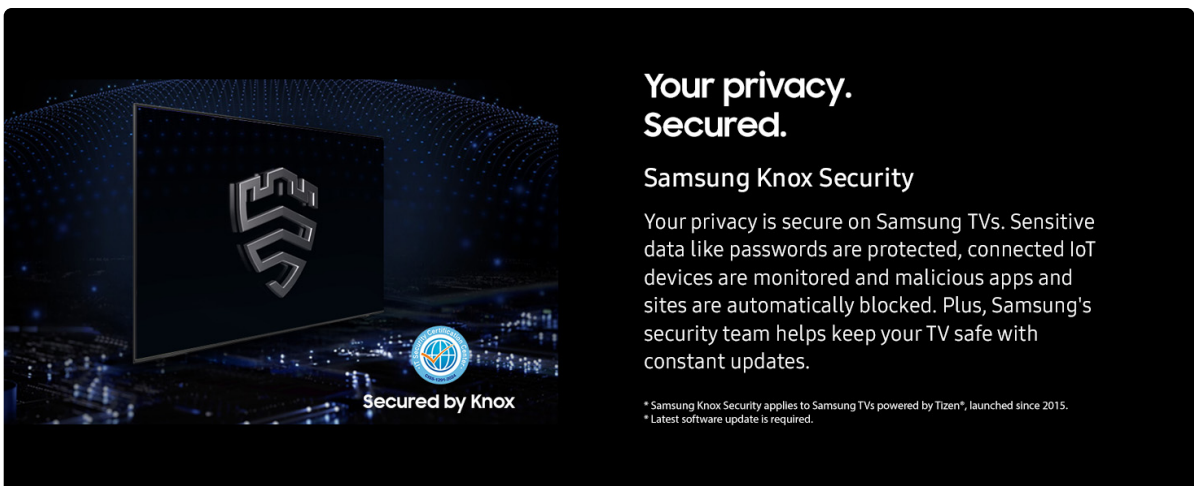


Image 5.3: Samsung Knox Security feature, emphasizing data protection and device monitoring.

- **Endless Free Content:** Access a variety of free channels, including Samsung TV Plus, offering news, sports, movies, and more.

Access a variety of channels for free

Endless Free Content

Access free channels, including Samsung TV Plus premium channels. Enjoy news, sports, movies, entertainment, music, kids' shows and more. With new content continuously added, there's always more to explore.

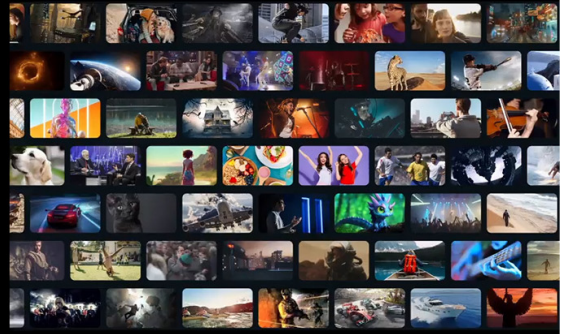
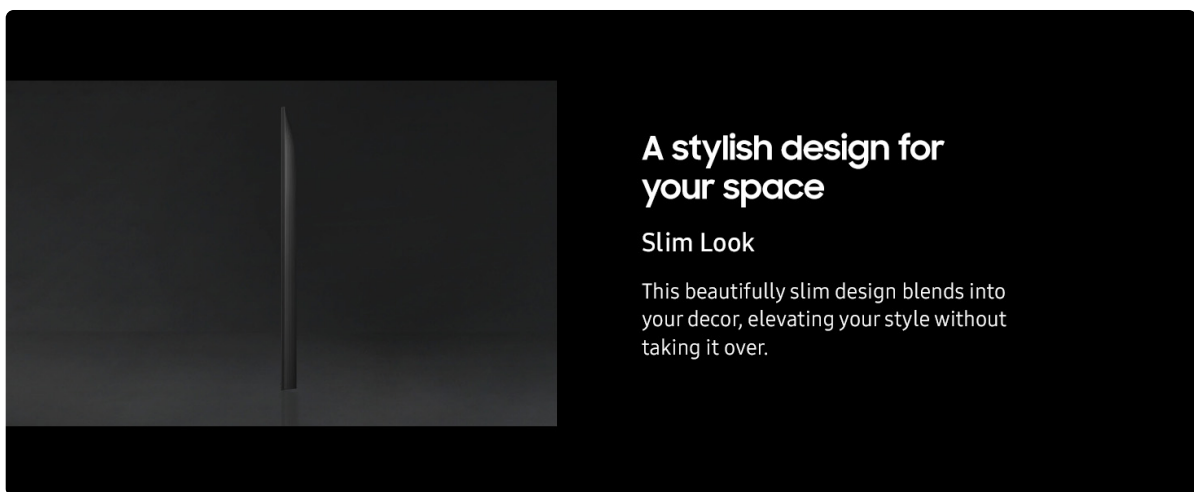


Image 5.4: A visual showing the wide range of free content available through Samsung TV Plus.

- **Slim Look:** The TV features a slim design that integrates seamlessly into your living space.



A stylish design for your space

Slim Look

This beautifully slim design blends into your decor, elevating your style without taking it over.

Image 5.5: The slim profile of the TV, designed to blend with modern decor.

- **SmartThings:** Connect and manage compatible smart home devices directly from your TV using the built-in SmartThings hub.

Connect and manage your smart home devices, all from your TV

SmartThings


With a built-in smart hub, your TV can connect and control smart devices — even those requiring Matter and HCA compatibility. You can also get notifications about your devices straight from the screen, including a 3D Map View that shows your entire smart home system at a glance.

* Available technology, functions and features may vary by country, service provider, network environment or product, and are subject to change without notice.
* Requires a Wi-Fi, Bluetooth or other wireless network connection and login to Samsung account.
* Connected devices are sold separately.
* Use of calm technology requires agreement to privacy notices from both SmartThings and the auto-registered device.
* TV and mobile device must be connected to SmartThings to use 3D Map View function. For a detailed list of supported devices, visit <https://partners.smartthings.com/supported-devices>.
* UI is subject to change without prior notice.



Image 5.6: The SmartThings interface on the TV, demonstrating control over various smart home devices.

- **7 Years OS Upgrade:** Enjoy up to 7 years of new TV experiences with free OS upgrades for products released in 2025.




Enjoy 7 years of new TV experiences for free

One UI Tizen

* Content and services may vary by region and are subject to change without notice.
 * Agreement to Smart Hub Terms and Conditions and Privacy Policy is required before use.
 * Some content and services require registration and subscription.
 * Requires Samsung account.
 * Tizen OS upgrades will be supported for up to 7 years starting from 2025, for products released in the year 2025.
 * Please note that the upgrade does not cover hardware-related performance, features or durability.

Image 5.7: A graphic highlighting the 7-year OS upgrade policy for enhanced TV experiences.

- **Quantum HDR:** Experience enhanced detail and contrast with Quantum HDR, which provides dynamic tone mapping for deeper blacks and more vibrant imagery.



Wider range of contrast on a cinematic scale

Quantum HDR

Experience the full power of every image with Quantum HDR, which brings out detail and contrast. The dynamic tone mapping of HDR10+ creates deeper blacks, more vibrant imagery and details that always shine through.

* The range of Quantum HDR luminance is based on internal testing standards and is subject to change according to viewing conditions or specifications.

Image 5.8: A visual comparison illustrating the wider range of contrast provided by Quantum HDR compared to SDR.

- **4K Upscaling:** The TV's powerful 4K upscaling technology converts lower-resolution content to near-4K quality.

Watch your favorite content in 4K

4K Upscaling

Our powerful 4K upscaling technology ensures you get up to 4K resolution for the content you love.

* Viewing experience may vary according to types of content and format.
 * Upscaling may not apply to PC connection and Game Mode.




Image 5.9: An image depicting a user enjoying content, highlighting the benefit of 4K upscaling.

- **AI Energy Mode:** This mode intelligently analyzes light levels and usage patterns to adjust brightness, helping to manage energy consumption.

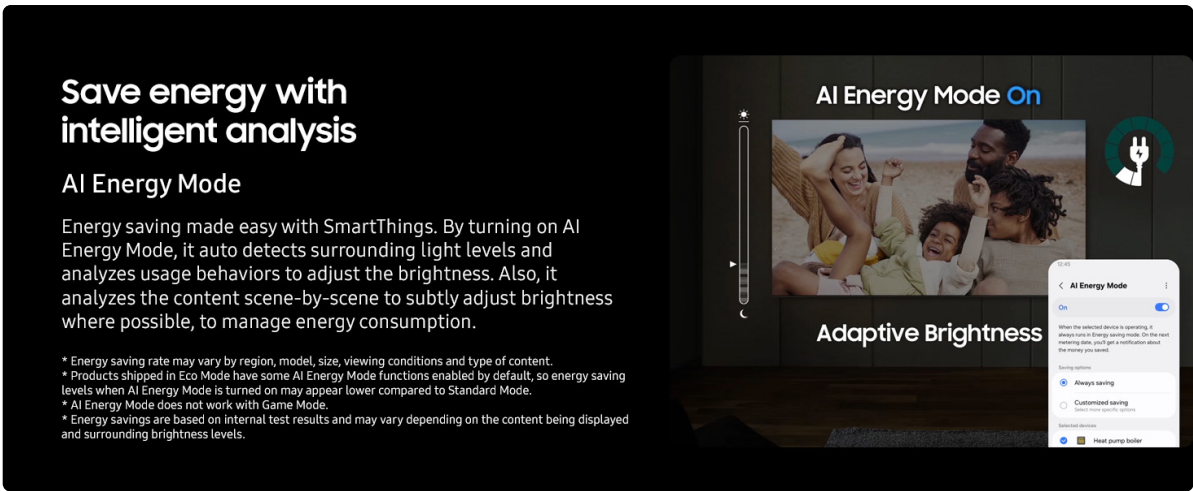


Image 5.10: The AI Energy Mode interface, showing adaptive brightness settings for energy saving.

- **AI Auto Game Mode:** The TV can detect the type of game being played and automatically optimize settings for an enhanced gaming experience.

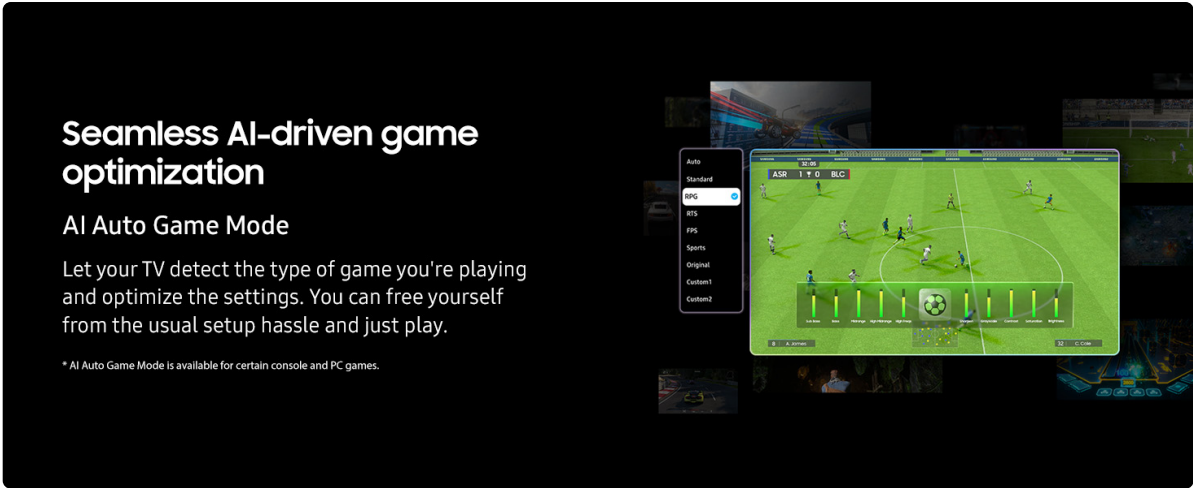


Image 5.11: The AI Auto Game Mode interface, displaying optimized settings for gaming.

6. MAINTENANCE

6.1 Cleaning Your TV

- Always unplug the TV before cleaning.
- Use a soft, dry microfiber cloth to gently wipe the screen and exterior surfaces.
- Do not use abrasive cleaners, waxes, or solvents.

6.2 Software Updates

Ensure your TV's software is up to date for optimal performance and security. You can usually check for updates via the TV's settings menu (e.g., Settings > Support > Software Update).

7. TROUBLESHOOTING

If you encounter issues with your TV, refer to the following common solutions:

Problem	Possible Solution
---------	-------------------

Problem	Possible Solution
No power	Check if the power cord is securely connected to the TV and the wall outlet. Ensure the outlet is functional.
No picture, but sound is present	Verify the correct input source is selected. Check HDMI cable connections.
No sound, but picture is present	Check volume levels and mute settings. Ensure audio cables are connected correctly.
Remote control not working	Check remote battery charge (for solar remote, ensure exposure to light). Ensure no obstructions between remote and TV.
Cannot connect to Wi-Fi	Restart your router and TV. Re-enter Wi-Fi password. Ensure TV is within range of the router.

For more complex issues, consult the full e-Manual accessible via your TV's settings or contact Samsung customer support.

8. SPECIFICATIONS

Feature	Detail
Brand	Samsung
Model Number	QA65Q7FAAUXSA
Screen Size	65 Inches / 166 cm
Display Technology	QLED
Resolution	4K
Refresh Rate	50Hz (Up to 60Hz)
Processor	Q4 AI Processor
Special Features	100% Color Volume with Quantum Dot, Samsung Knox Security, SmartThings
Connectivity Technology	Bluetooth, HDMI, Wi-Fi
Product Dimensions (D x W x H)	6.1 x 145.3 x 83.4 cm
Item Weight	23.8 kg
Included Components	TV, User Manual, Remote Control
Country of Origin	Egypt
First Available Date	22 May 2025

9. WARRANTY AND SUPPORT

Your Samsung TV comes with a manufacturer's warranty. For specific warranty terms and conditions, please refer to the warranty card included with your product or visit the official Samsung website for your region. For technical support, service requests, or further assistance, please contact Samsung customer service. Contact details can typically be found on the Samsung website or in the documentation provided with your TV.

© 2025 Samsung. All rights reserved.