

## Manuals+

[Q & A](#) | [Deep Search](#) | [Upload](#)

manuals.plus /

- › [Pawfly](#) /
- › [Pawfly WiFi Automatic Fish Feeder: User Manual \(Model Pawfly-2868\)](#)

## Pawfly Pawfly-2868

# Pawfly WiFi Automatic Fish Feeder: User Manual

Model: Pawfly-2868 | Brand: Pawfly

## 1. INTRODUCTION

This manual provides detailed instructions for the installation, operation, and maintenance of your Pawfly WiFi Automatic Fish Feeder. This device is designed to automate fish feeding in aquariums, offering convenience and real-time monitoring capabilities through a dedicated mobile application. Please read this manual thoroughly before using the product to ensure proper function and safety.

## 2. SAFETY INFORMATION

- Ensure the device is powered by a 5V2A USB power supply. Do not use power supplies with incorrect voltage or amperage.
- Keep the device and its power connections away from water to prevent electrical hazards.
- Do not attempt to disassemble or repair the device yourself. Contact customer support for assistance.
- This device is designed for indoor use only.
- Ensure the feeder is securely mounted to prevent it from falling into the aquarium.
- Only use dry fish food types as specified in the 'Food Compatibility' section.

## 3. PACKAGE CONTENTS

Verify that all items are present in the package:

- Pawfly WiFi Automatic Fish Feeder Main Unit
- Food Container
- Base with Sticker (for covered tanks)
- Support with Clamp (for rimless tanks)
- Camera with Cable

- USB-C Cable
- Small-Hole Portion Control Disc (0.2g per portion)
- Fan-Shaped Portion Control Disc (0.6g per portion)
- Disc Prying Sheet
- Desiccant Compartment
- Screws (for clamp installation)
- Instruction Manual



Image: All accessories included with the Pawfly WiFi Automatic Fish Feeder.

## 4. PRODUCT OVERVIEW

The Pawfly WiFi Automatic Fish Feeder integrates a food dispenser with a 2.5K HD camera for remote feeding and monitoring. It features a 230 mL food capacity and supports various dry food types. The device offers two installation methods and app-controlled scheduling.



Image: Main components of the Pawfly WiFi Automatic Fish Feeder, including the feeder unit, camera, and mobile app interface.

## Dimensions

# Wi-Fi Automatic Fish Feeder

Designed for 20-gallon and larger aquariums

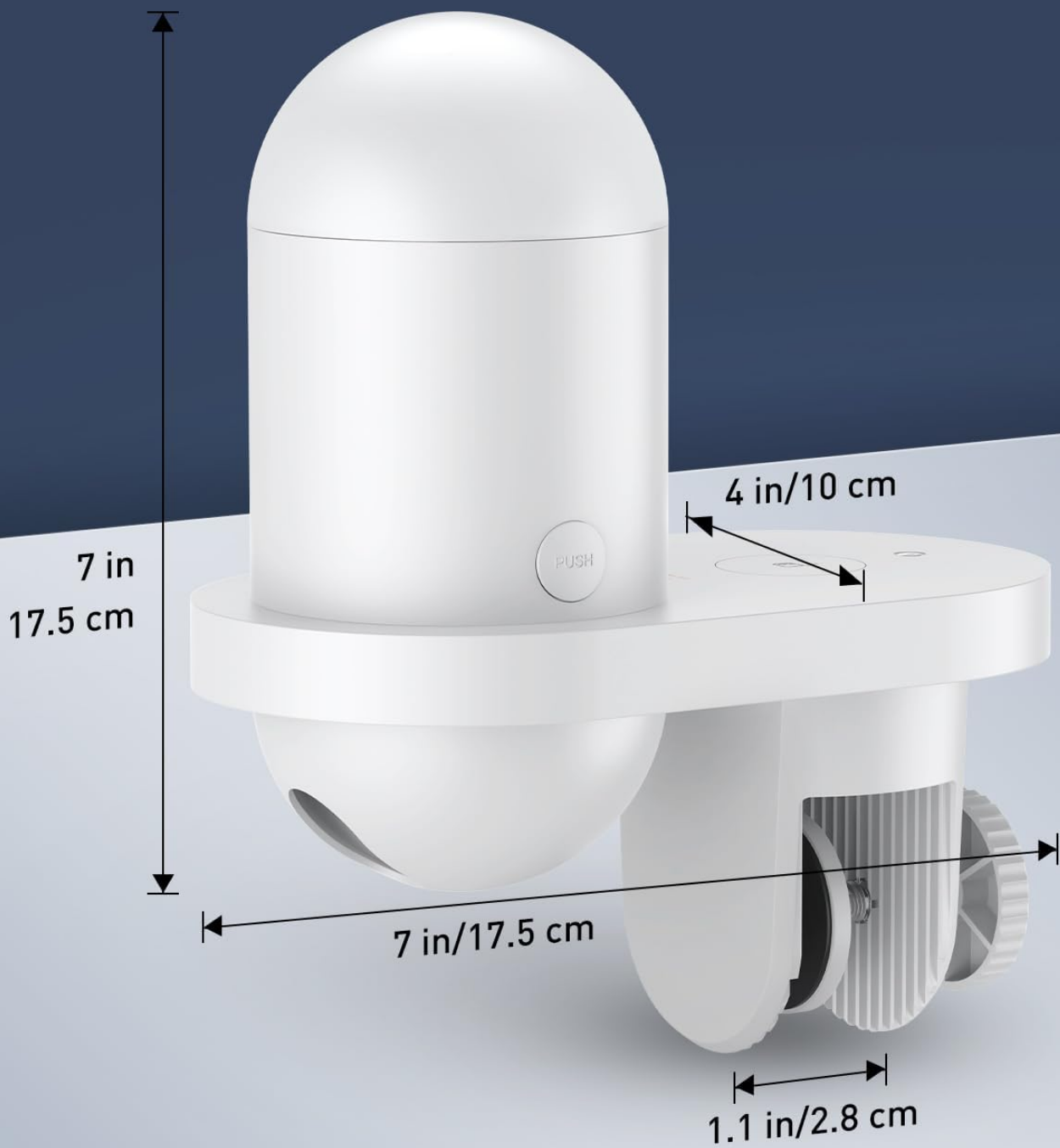


Image: The feeder unit measures approximately 7 inches (17.5 cm) in length, 4 inches (10 cm) in width, and 7 inches (17.5 cm) in height.

## 5. SETUP

### 5.1 Assembly

1. **Install the Fish Food Container:** Align the red (or white) dot on the food container with the straight line of the fish food outlet on the main unit. Press the lock button and twist to secure the container.
2. **Install the Clamp:** Attach the clamp to the main unit using the provided 4 screws. Ensure it is securely

fastened.

3. **Connect the Camera:** Connect the magnetic IO cable from the camera to the corresponding port on the main unit.
4. **Connect Power Supply:** Plug the USB-C cable into the feeder's power input port. Connect the other end to a 5V2A USB power adapter (not included). Do not plug into the wrong power input.

Video: Detailed assembly instructions for the Pawfly WiFi Automatic Fish Feeder, covering food container, clamp, camera, and power connection.

## 5.2 Mounting Methods

The feeder supports two installation methods:

- **For Rimless Tanks:** Mount the auto fish food dispenser on the tank wall using the attached support with a clamp.
- **For Covered Tanks:** Directly attach the feeder to the lid of a covered tank using the sticky base.

**NOTE: The clamp is not suitable for tanks with rims over 1 inch (2.5 cm) thick.**



Image: Visual guide for mounting the feeder on either a rimless tank with a clamp or a covered tank using the adhesive base.

## 5.3 App Connection Steps

The feeder works with 2.4 GHz/5GHz Wi-Fi networks within 50 feet of your router.

1. Press the feeder's Wi-Fi button for 8 seconds until you hear a "beep".
2. Ensure Bluetooth and Wi-Fi are enabled on your mobile device.
3. Download and open the "ICSee Home" app.
4. Tap "Add Device".
5. Tap the pop-up dialog box for device discovery.
6. Enter your Wi-Fi network name and password, then tap "Next Step".
7. Wait for approximately 10 seconds for a stable connection.
8. Name your device, then tap "Next Step".
9. Choose a device location, then tap "Next Step".
10. Turn on "Push Alarm", then tap "Complete".

## App Connection Steps

(Work with 2.4 GHz/5GHz Wi-Fi networks)

1. Press for 8 s until you hear a "beep"
2. Make sure Bluetooth & Wi-Fi are on
3. Download & open the "ICSee Home" app
4. Tap "Add Device"
5. Tap the pop-up dialog box
6. Enter Wi-Fi name & password, then tap "Next Step"
7. Wait for about 10 s for a stable connection
8. Name your device, then tap "Next Step"
9. Choose a device location, then tap "Next Step"
10. Turn on "Push Alarm", then tap "Complete"

Image: Visual steps for connecting the Pawfly feeder to your home Wi-Fi network via the ICSee Home app.

## 6. OPERATING INSTRUCTIONS

### 6.1 App Control and Scheduling

The "ICSee Home" app allows you to customize feeding schedules, portion sizes, and intervals. You can set up to 20 portions per feeding.

- **Feeding Schedules:** Create and manage multiple feeding times throughout the day.
- **Portion Sizes:** Adjust the amount of food dispensed per feeding.
- **Food Shortage Alerts:** Receive instant notifications on your phone when the food level is low.

### Simple Taps for Perfect Feeding Control

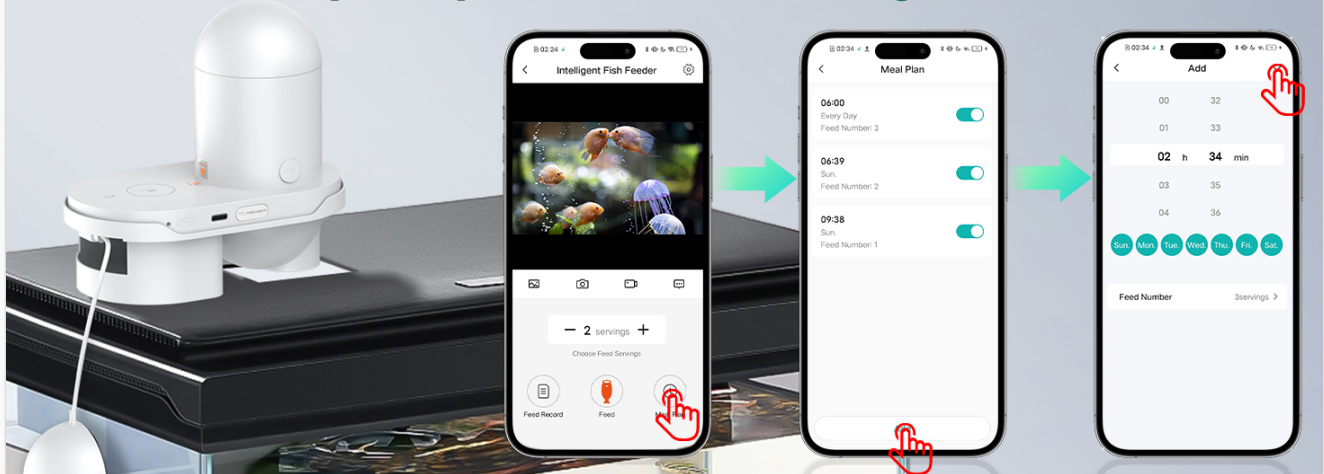


Image: The ICSee Home app interface for setting feeding schedules and adjusting portion sizes.

## Instant Alerts, Timely Refills, Happy Fish

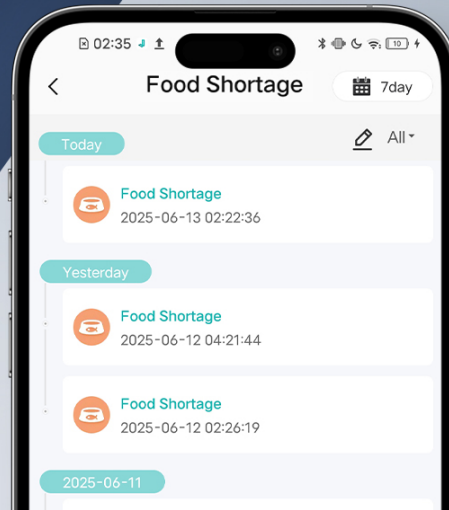


Image: The app provides instant alerts for low food levels, ensuring timely refills.

### 6.2 Real-Time Monitoring

The integrated 2.5K HD camera with infrared night vision allows you to monitor your fish and aquarium activities remotely, day or night.

- **Live View:** Access a sharp, vibrant live feed of your fish through the app.
- **Infrared Night Vision:** Monitor your aquarium even in low-light conditions.
- **Video Recording & Snapshots:** Capture moments and record video directly from the app.

## Cute Fish, Clear Views, Fun Stories Share with Everyone

-  Video Recording
-  Snapshot
-  Real-Time Video



Image: The camera provides clear views for monitoring and capturing fish activities.

Video: Demonstration of the Pawfly WiFi Automatic Fish Feeder in operation, showing remote feeding and live camera view.

### 6.3 Manual Feeding

In addition to scheduled feedings, you can manually dispense food by pressing the button on the feeder unit or through the app.

## 2 Food Releasing Methods

### Manual Feeding

Press the button on the feeder



### Auto Feeding

Set and operate with the App

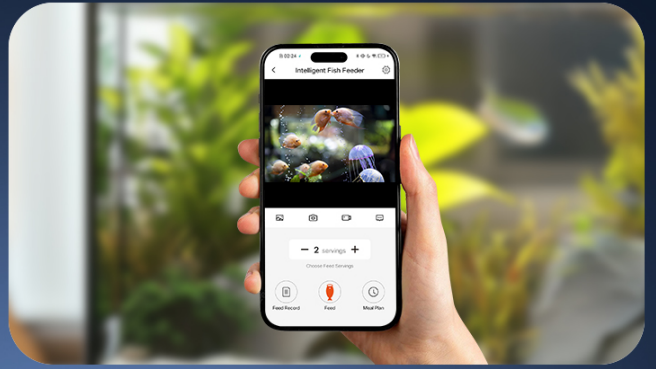


Image: The feeder supports both manual feeding via a physical button and automatic feeding controlled by the mobile app.

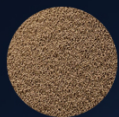
## 7. MAINTENANCE

### 7.1 Food Compatibility and Capacity

The 230 mL capacity food container is suitable for most dry fish food types. The normally closed food outlet helps keep food fresh.

- **Suitable Food:** Powder (diameter < 1 mm), Pellets (diameter 1-5 mm), Small Pillars (diameter  $\leq$  5 mm, length  $\leq$  13 mm).
- **Unsuitable Food:** Flakes (diameter  $\geq$  6 mm), Large Pillars (diameter  $\geq$  5 mm, length  $\geq$  13 mm), Irregular Food (e.g., mealworms, krill, centipedes).

### Suitable Fish Food



**Powder:** ✓  
Diameter  $\leq$  1 mm



**Pellet:** ✓  
Diameter 1-5 mm



**Small Pillar:** ✓  
Diameter  $\leq$  5 mm; Length  $\leq$  13 mm

### Unsuitable Fish Food



**Flake:** ✗  
Diameter  $\geq$  6 mm



**Large Pillar:** ✗  
Diameter  $\geq$  5 mm; Length  $\geq$  13 mm



**Irregular Food:** ✗  
Mealworms, krill, centipedes, etc.

Image: Guide to suitable and unsuitable fish food types based on size and form.

### 7.2 Replacing Portion Control Discs

The feeder includes two interchangeable portion control discs for different feeding needs:

- **Small-Hole Disc:** Dispenses 0.2 g per portion, suitable for smaller fish or precise feeding.
- **Fan-Shaped Disc:** Releases 0.6 g per portion, ideal for larger appetites.

To replace a disc:

1. Rotate the food container cover left to remove it.

2. Pull out the currently installed disc.
3. Slide in the desired new disc.
4. Rotate the cover right to restore it.

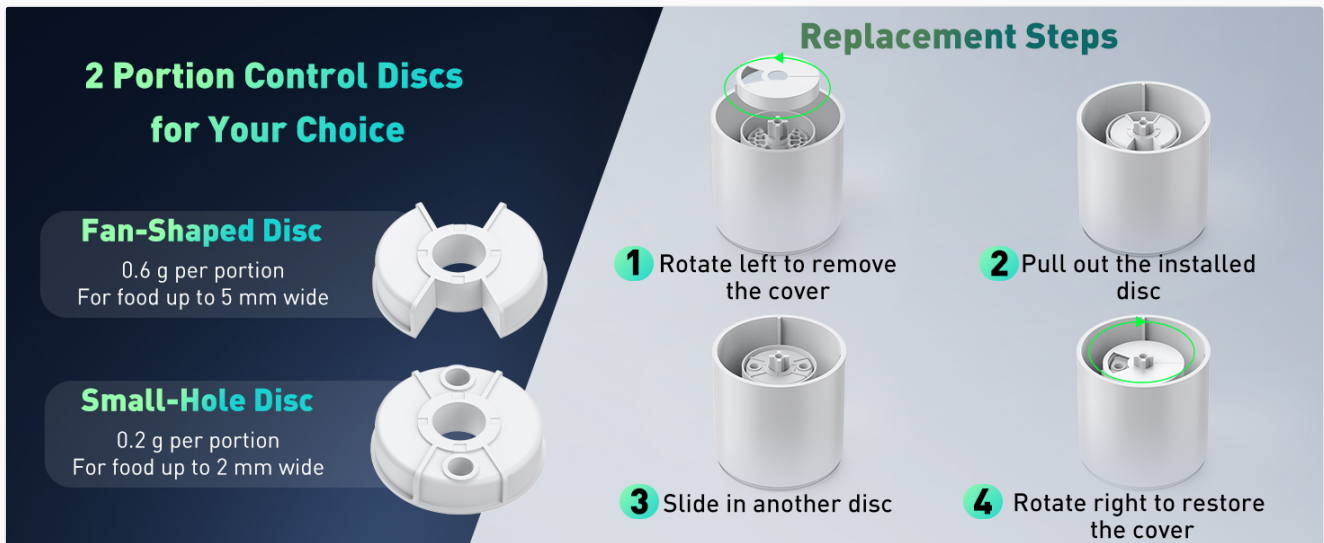


Image: Instructions for replacing the portion control discs to adjust feeding amounts.

### 7.3 Cleaning

Regular cleaning of the food container and dispensing mechanism is recommended to prevent clogs and maintain hygiene. Ensure the device is unplugged before cleaning. Wipe the exterior with a damp cloth. The food container can be detached and rinsed with water, ensuring it is completely dry before reassembly.

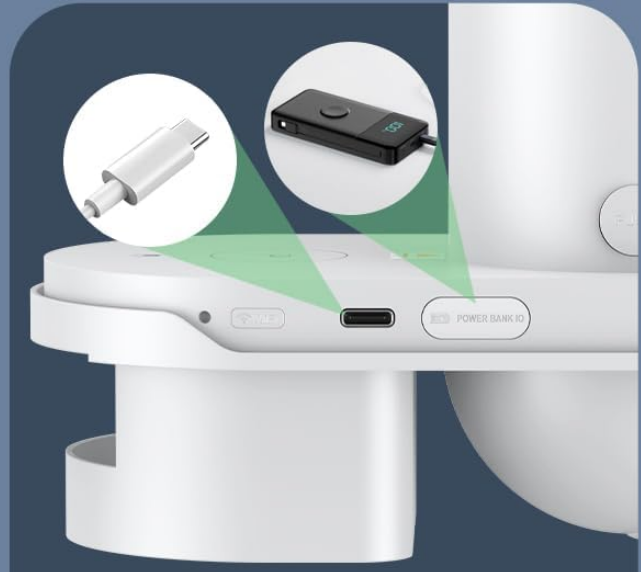
### 7.4 Moisture Control

The feeder includes a desiccant compartment to help keep the fish food dry and fresh. Replace the desiccant as needed.

## Ergonomic & Moisture-Proof



Manual Feeding Button



DC Input Port & Backup Power Port



Desiccant Compartment



Normally-Closed Food Outlet

Image: Features like the desiccant compartment and normally-closed food outlet contribute to moisture prevention and food freshness.

### 8. TROUBLESHOOTING

- **Device not powering on:** Ensure the USB-C cable is securely connected to a 5V2A power adapter and the feeder. Check the power outlet.
- **Cannot connect to Wi-Fi:** Verify your Wi-Fi network is 2.4 GHz/5GHz and within 50 feet of the feeder. Ensure correct Wi-Fi password. Try resetting the feeder by holding the Wi-Fi button for 8 seconds.

- **Food not dispensing:** Check if the food container is properly installed and contains enough food. Ensure the correct portion control disc is in place and not jammed. Clean the dispensing mechanism if necessary.
- **Camera not working:** Ensure the camera cable is securely connected to the main unit. Check app settings for camera access.
- **App notifications not received:** Check app notification settings on your phone and within the "ICSee Home" app. Ensure the feeder is connected to Wi-Fi.

## 9. SPECIFICATIONS

Feature	Detail
Model Name	Pawfly-2868
Brand	Pawfly
Dimensions (LxWxH)	7 x 4 x 6.7 inches (17.5 x 10 x 17.5 cm)
Item Weight	1.65 pounds (0.75 Kilograms)
Material	Plastic
Color	White
Food Capacity	230 mL
Camera Resolution	2.5 K HD
Night Vision	Infrared
Power Source	USB Powered (5V2A adapter not included)
Wi-Fi Compatibility	2.4 GHz/5GHz
App Control	ICSee Home
Special Features	Durable, Timer, Food Shortage Alert

## 10. WARRANTY AND SUPPORT

### 10.1 Warranty Information

The Pawfly WiFi Automatic Fish Feeder (Model Pawfly-2868) comes with a **1-Year Warranty** from the date of purchase. This warranty covers manufacturing defects and malfunctions under normal use. It does not cover damage caused by misuse, accidents, unauthorized modifications, or improper installation.

### 10.2 Customer Support

For technical assistance, troubleshooting, or warranty claims, please contact Pawfly customer support through the following channels:

- **Email:** [support@pawfly.com](mailto:support@pawfly.com)
- **Website:** Visit the official Pawfly website for FAQs and additional resources.

Please have your product model number (Pawfly-2868) and proof of purchase ready when contacting support.

© 2025 Pawfly. All rights reserved.