

[Manuals.plus](#) /

› [GoveeLife](#) /

› GoveeLife WiFi Floating Pool Thermometer H5109 User Manual

## GoveeLife H5109

# GoveeLife WiFi Floating Pool Thermometer H5109 User Manual

Model: H5109

## 1. INTRODUCTION

---

Thank you for choosing the GoveeLife WiFi Floating Pool Thermometer H5109. This device allows you to monitor water temperature remotely via the Govee Home app, providing real-time data and alerts for various water environments. Please read this manual carefully to ensure proper setup and operation.

# Stärker und intelligenter

## GoveeLife H5109



VS

## Others



Verbindungsdistanz

328ft

Verbindungsdistanz

295ft

Accuracy

0.5°C

Accuracy

1°C

Battery Life

3 Jahre

Battery Life

1 Jahr

Smart

Alexa+APP

Smart

None

*Image: GoveeLife H5109 WiFi Floating Pool Thermometer.*

## 2. PRODUCT FEATURES

- **Remote Monitoring:** Connects to a gateway for real-time water temperature data via the app, with a connection distance of up to 100 meters. Supports pairing with multiple sensors.
- **IPX7 Waterproof:** Designed for excellent water resistance, ensuring accurate temperature measurement even when fully submerged.
- **Data Storage & Export:** Provides 20 days of online data display and allows export of records for the past two years.

- **Long Battery Life:** Powered by two AAA batteries, offering both standard and power-saving modes for extended use.
- **Easy Installation:** Includes a rope to prevent floating away and is suitable for various water environments.



*Image: Comparison of GoveeLife H5109 features against other thermometers.*



*Image: IPX7 Waterproof design of the thermometer.*



*Image: Fast and accurate temperature sensing.*

## Comment connecter le capteur ?



Image: 24/7 Smart Alert notification on smartphone.



Image: Data storage and export functionality.

### 3. PACKAGE CONTENTS

Ensure all items are present in the package:

- GoveeLife H5109 Floating Pool Thermometer
- WiFi Gateway
- 2 x AAA Batteries
- Rope
- Rubber Ring (pre-installed or separate)

# Präzise Temperaturüberwachung, sogar aus 100 m Entfernung



*Image: GoveeLife H5109 Thermometer, Gateway, Batteries, and Rope.*

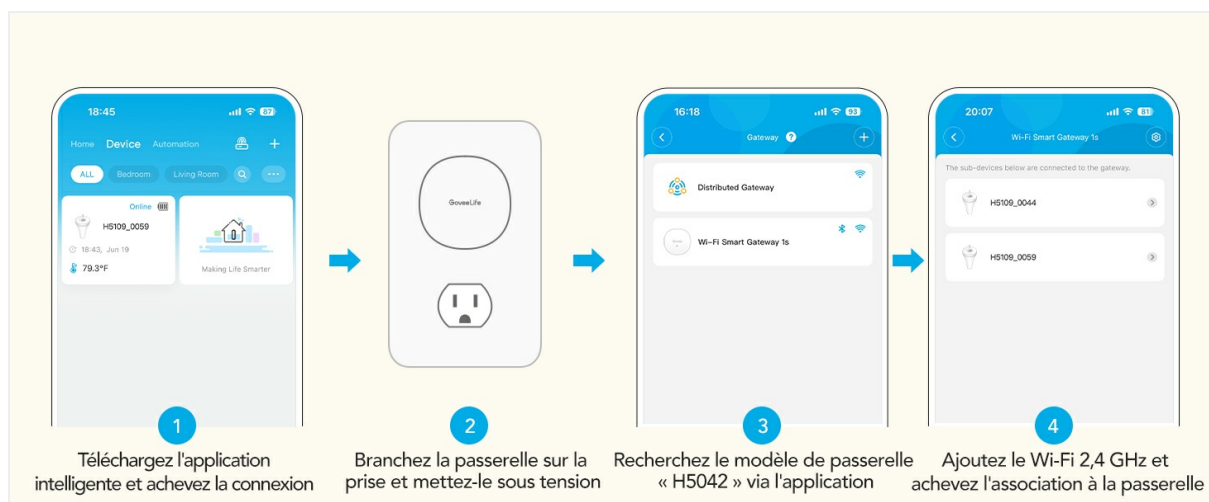
## 4. SETUP GUIDE

### 4.1. Thermometer Assembly and Battery Installation

1. Unscrew the bottom cap of the thermometer.
2. Insert 2 AAA batteries, ensuring correct polarity (+/-).
3. If not pre-installed, place the rubber ring around the thermometer body.
4. Align the marks on the upper and lower edges, then securely screw the cap back on to ensure a

watertight seal.

5. Attach the provided rope to the thermometer's loop if desired.



*Image: Steps for sensor assembly and pairing.*

## 4.2. Govee Home App Installation and Gateway Connection

1. Download the Govee Home app from the App Store (iOS) or Google Play (Android).
2. Register or log in to your Govee Home account.
3. Plug the WiFi Gateway into a power outlet.
4. In the app, tap the '+' icon in the top right corner, search for the gateway model (e.g., H5042), and follow the on-screen instructions to connect it to your 2.4GHz WiFi network.
5. Once the gateway is connected, add the H5109 thermometer as a sub-device within the app.



*Image: Steps for app and gateway connection.*

## 5. OPERATING INSTRUCTIONS

### 5.1. Monitoring Temperature

Once connected, place the thermometer in the water. The current temperature will be displayed on the thermometer's screen and in the Govee Home app. You can view historical data and trends within the app.

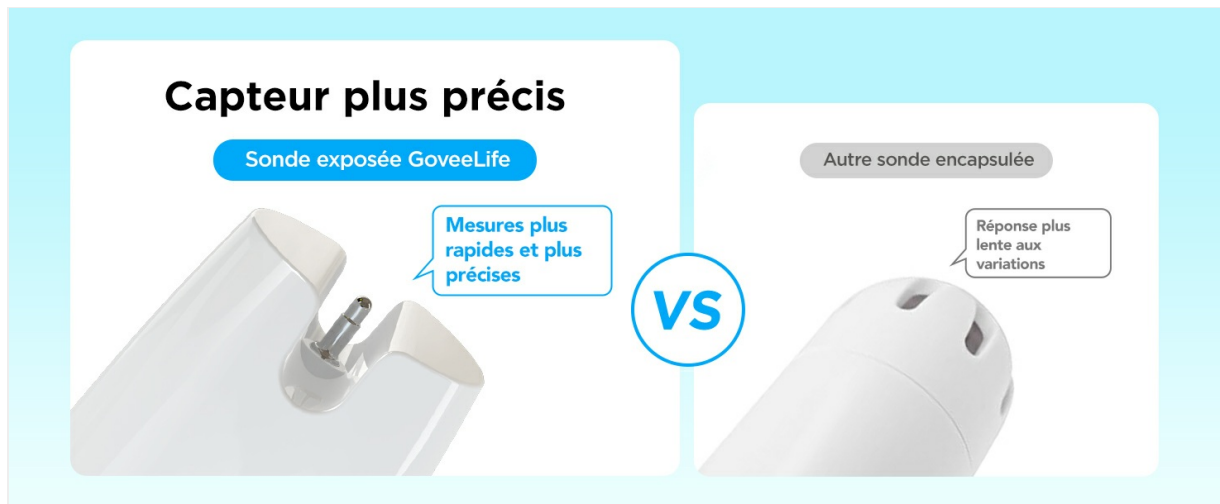


Image: Precise temperature monitoring from a distance.

## 5.2. Setting Alerts

Use the Govee Home app to set custom temperature ranges. If the water temperature goes above or below your set limits, you will receive instant notifications on your smartphone.

## 5.3. Data Export

The app stores up to 20 days of online data. For longer periods, you can export up to two years of historical data to a CSV file for analysis on your computer.

## 5.4. Applicable Scenarios

The GoveeLife H5109 is suitable for various applications:

- Swimming Pools
- Spas and Hot Tubs
- Baby Bathtubs
- Fish Ponds and Aquariums
- Ice Baths



Image: Suitable for multiple water environments.

## 6. MAINTENANCE

## 6.1. Cleaning

Wipe the thermometer with a soft, damp cloth as needed. Do not use abrasive cleaners or solvents.

## 6.2. Battery Replacement

When the battery indicator in the app or on the device shows low power, replace the 2 AAA batteries. Ensure the cap is securely tightened after replacement to maintain the waterproof seal.

# Für mehrere Szenarien geeignet

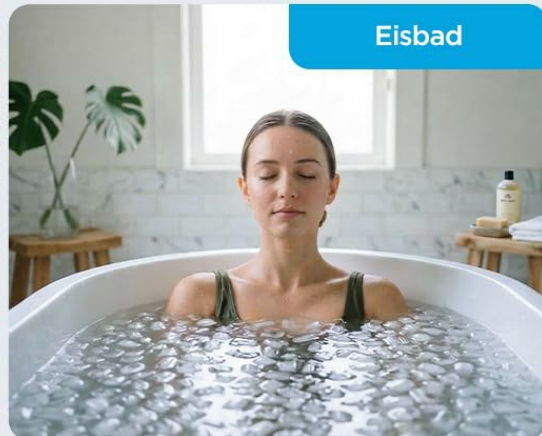
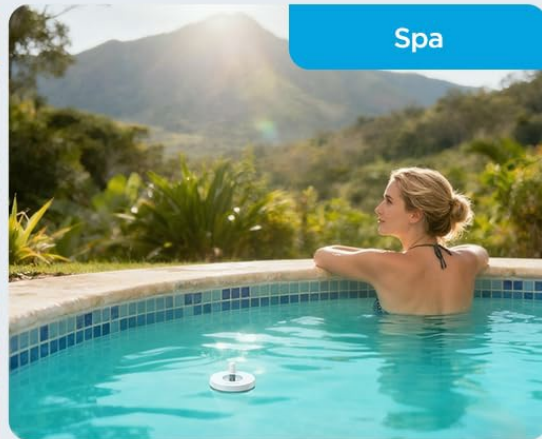


Image: Battery compartment for AAA batteries.

## 7. TROUBLESHOOTING

## 7.1. Device Not Connecting to App/Gateway

- Ensure the gateway is powered on and connected to a 2.4GHz WiFi network.
- Check if the thermometer batteries are correctly installed and have sufficient power.
- Make sure the thermometer is within the 100m range of the gateway. Obstacles can reduce range.
- Restart the gateway and the thermometer, then try pairing again.

## 7.2. Inaccurate Temperature Readings

- Ensure the thermometer is fully submerged in the water and not exposed to direct sunlight or other heat sources that could affect its reading.
- Verify that the thermometer's sensor is clean and free from debris.
- Compare the reading with another reliable thermometer to check for significant discrepancies.

## 7.3. Short Battery Life

- Ensure you are using high-quality AAA alkaline batteries.
- Check if the thermometer is operating in power-saving mode (if applicable via app settings).
- Extreme temperatures can affect battery performance.

## 8. SPECIFICATIONS

<b>Brand</b>	GoveeLife
<b>Model Name</b>	H5109
<b>Special Feature</b>	Alarm
<b>Color</b>	White
<b>Connectivity Technology</b>	Bluetooth, Wi-Fi (2.4GHz)
<b>Power Source</b>	Battery Powered (2 AAA included)
<b>Response Time</b>	2 seconds
<b>Usage</b>	Outdoor
<b>Smart Home Compatibility</b>	Compatible with smart home systems (e.g., Alexa)
<b>Material</b>	Acrylonitrile Butadiene Styrene
<b>Max Rated Temperature</b>	70 Degrees Celsius
<b>Waterproof Rating</b>	IPX7

## 9. WARRANTY AND SUPPORT

### 9.1. Warranty Information

GoveeLife products come with a limited warranty. Please refer to the official GoveeLife website or your purchase documentation for specific warranty terms and conditions.

## **9.2. Customer Support**

For technical assistance, troubleshooting, or product inquiries, please contact GoveeLife customer support through the Govee Home app or visit the official GoveeLife website for contact information.