



[Manuals.plus](#) /

› [Tribesigns](#) /

› Tribesigns 6-Tier Industrial Bookshelf User Manual

Tribesigns LD0020

Tribesigns 6-Tier Industrial Bookshelf User Manual

Model: LD0020

1. INTRODUCTION

Thank you for choosing the Tribesigns 6-Tier Industrial Bookshelf. This versatile and robust storage solution is designed to enhance various spaces, from living rooms to offices, providing ample storage and display opportunities. Crafted from high-quality MDF and metal, this bookshelf features a scratch-resistant and dirt-repellent surface, ensuring durability and easy maintenance.

This manual provides essential information for the safe assembly, operation, and maintenance of your new bookshelf. Please read it thoroughly before beginning assembly and keep it for future reference.



Figure 1: Tribesigns 6-Tier Industrial Bookshelf (Model LD0020)

2. SAFETY INFORMATION

To ensure safe use and prevent accidents, please adhere to the following safety guidelines:

- Always assemble the bookshelf on a clean, flat, and stable surface to prevent damage or injury.
- Ensure all screws and fasteners are securely tightened before use. Periodically check and re-tighten as necessary.
- Do not overload the shelves. Refer to the "Specifications" section for maximum weight capacity per shelf.
- For enhanced stability and safety, especially in households with children or pets, utilize the provided anti-tip kit to secure the bookshelf to a wall.
- Keep small parts and packaging materials away from children to prevent choking hazards.

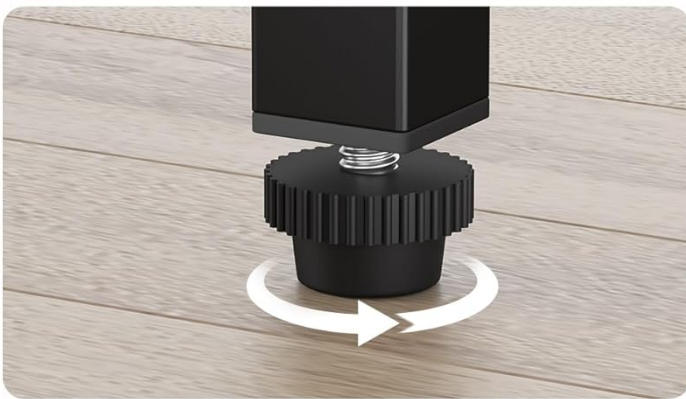


Anti-Tip Kit

Effectively prevent the shelf from falling down and ensure the stability of the bookshelf

Easy to Clean Around

The bottom of the bookshelf has some space from the ground, which is moisture-proof and the floor is easy to clean



Adjustable Feet

Stable and convenient adjustable feet help the bookshelf stay stable in a variety of environments

Figure 2: Key Safety and Design Features including Anti-Tip Kit and Adjustable Feet.

The anti-tip kit effectively prevents the shelf from falling down and ensures the stability of the bookshelf. The adjustable feet help the bookshelf stay stable on uneven surfaces. The space under the bookshelf allows for easy cleaning and provides moisture protection.

3. PRODUCT SPECIFICATIONS

Table 1: Tribesigns 6-Tier Industrial Bookshelf Specifications

Feature	Detail
Brand	Tribesigns
Model Number	LD0020
Color	Brown
Overall Dimensions (L x W x H)	80 x 30 x 181 cm (31.5 x 11.8 x 71.3 inches)

Feature	Detail
Weight	35 kg (77 lbs)
Maximum Weight Capacity	50 kg (110 lbs) total
Material	Laminated Wood (MDF) and Metal
Number of Shelves	6 (Note: Product description states 6, feature bullets state 7 levels. Assuming 6 based on visual and main description.)
Shelf Type	Tiered Shelf
Special Features	Space-saving, Scratch-resistant, Dirt-repellent, Adjustable Feet, Anti-tip Kit



Figure 3: Product Dimensions Overview.

4. ASSEMBLY AND SETUP

The Tribesigns bookshelf is designed for straightforward assembly. While specific tools are typically included or standard household tools are sufficient, always refer to the detailed assembly instructions provided in the product packaging for precise steps and component identification.

4.1. Before You Begin

- Unpack all components and verify against the parts list in your product packaging.
- Ensure you have a clear, spacious, and clean area for assembly.
- Gather any necessary tools (e.g., screwdriver, Allen wrench - usually provided).

4.2. Assembly Steps (General Guidance)

1. **Frame Assembly:** Connect the metal frame components using the provided screws and fasteners. Do not fully tighten screws until all parts are aligned.
2. **Shelf Installation:** Slide or secure the laminated wood shelves into the designated slots or onto the support brackets within the metal frame.
3. **Final Tightening:** Once all components are in place and aligned, carefully tighten all screws to secure the structure.
4. **Attach Anti-Tip Kit:** Secure the anti-tip kit to the top rear of the bookshelf and then to a wall stud using appropriate wall anchors (if not provided, use suitable hardware for your wall type). This step is crucial for stability.
5. **Adjust Feet:** Use the adjustable feet at the bottom of the bookshelf to level the unit on uneven floors, ensuring maximum stability.

Note: For detailed, step-by-step assembly instructions and diagrams, please refer to the specific manual included in your product packaging.

5. OPERATING INSTRUCTIONS

The Tribesigns 6-Tier Industrial Bookshelf is designed for versatile storage and display. To ensure optimal performance and longevity:

- **Weight Distribution:** Distribute weight evenly across the shelves. Place heavier items on lower shelves to enhance stability.
- **Capacity:** Do not exceed the maximum weight capacity of 50 kg (110 lbs) for the entire unit. Avoid placing excessively heavy single items on any one shelf.
- **Placement:** Position the bookshelf on a flat, stable surface. Use the adjustable feet to compensate for minor floor irregularities.
- **Ventilation:** If placing electronic devices, ensure adequate ventilation to prevent overheating.

6. MAINTENANCE AND CARE

Proper care will help maintain the appearance and extend the life of your Tribesigns bookshelf:

- **Cleaning:** The laminated wood surface is scratch-resistant and dirt-repellent. Wipe surfaces regularly with a soft, damp cloth. Avoid abrasive cleaners or harsh chemicals that could damage the finish.
- **Spills:** Immediately wipe up any spills to prevent staining or water damage to the wood.
- **Sunlight Exposure:** Avoid prolonged exposure to direct sunlight, which can cause fading or discoloration over time.

- **Temperature and Humidity:** Maintain a stable room temperature and humidity level to prevent warping or cracking of the wood.
- **Hardware Check:** Periodically check all screws and fasteners to ensure they remain tight. Re-tighten if necessary.

7. TROUBLESHOOTING

If you encounter any issues with your bookshelf, consider the following common solutions:

- **Wobbling/Instability:**
 - Ensure all assembly screws are fully tightened.
 - Adjust the leveling feet at the bottom of the unit to compensate for uneven flooring.
 - Verify the anti-tip kit is securely installed to the wall.
- **Missing Parts:**
 - Carefully check all packaging materials and the box for any small components that might be overlooked.
 - If parts are genuinely missing, contact Tribesigns customer support with your model number and a description of the missing items.
- **Damage During Assembly:**
 - If any component is damaged during assembly, stop and contact customer support for assistance. Do not force damaged parts.

8. WARRANTY AND SUPPORT

Tribesigns is committed to providing quality products and customer satisfaction. While specific warranty details are typically provided with your purchase documentation, our team is ready to assist you with any issues or questions you may have regarding your bookshelf.

For support, please contact Tribesigns customer service through the retailer where you purchased the product or directly via the contact information provided in your product packaging or on the official Tribesigns website. Please have your model number (LD0020) and purchase details ready when contacting support.

We appreciate your business and hope you enjoy your new Tribesigns bookshelf!