

Manuals.plus /

- › JOYING /
- › JOYING Android Radio 10.1 Inch Car Stereo User Manual (Model JY-UTS08N8)

## JOYING JY-UTS08N8

# JOYING Android Radio 10.1 Inch Car Stereo User Manual

Model: JY-UTS08N8

## INTRODUCTION

This manual provides detailed instructions for the installation, operation, and maintenance of your JOYING Android Radio 10.1 Inch Car Stereo, Model JY-UTS08N8. Please read this manual thoroughly before using the product to ensure proper function and safety.

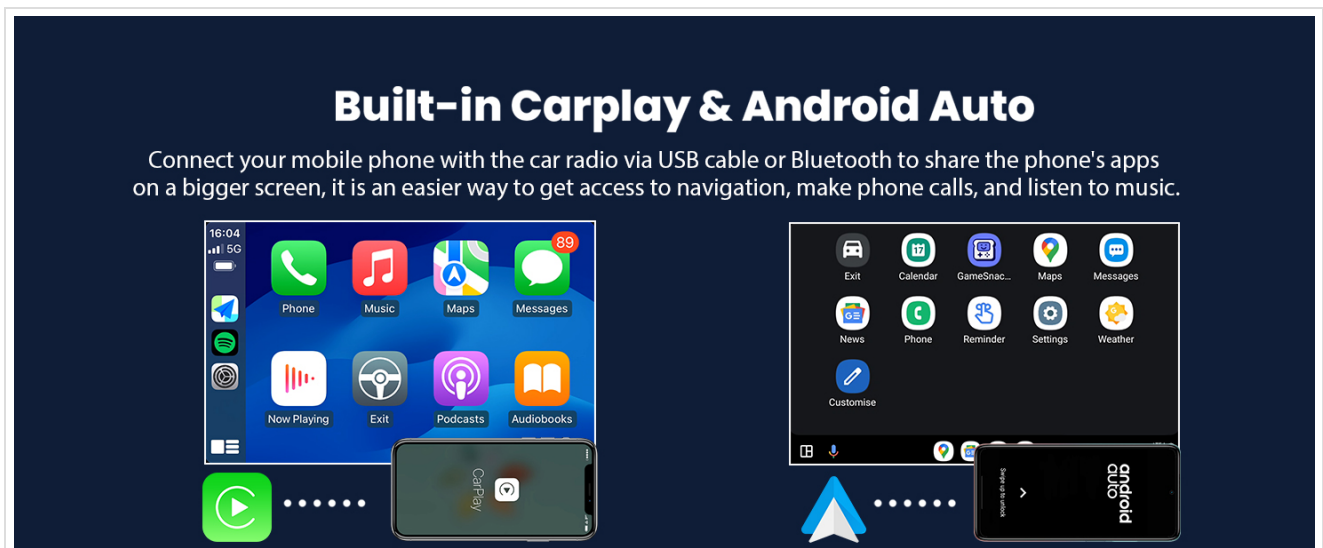




Image: Overview of the JOYING 10.1-inch Single Din Car Radio, highlighting its Android 13 operating system, Qualcomm Snapdragon 6125 processor, Octa Core 2.0GHz, and IPS screen with 1280x800 resolution.

## PACKAGE CONTENTS

Verify that all items listed below are included in your package. If any items are missing or damaged, please contact customer support.

			
Single Din Cage	Mounting Sleeve	Left & Right Bracket	
			
Plastic Trim Out	Extraction Keys	Installation Manual	WiFi Antenna *1
			
GPS Antenna *1	4G Antenna *2	External Mic*1	USB Cable *2
			
AR Cable*1	Screen Ribbon Cable*1	ISO Cable *1	User Manual

*Image: All included accessories, such as cables, antennas, and mounting hardware.*

- 10.1" Radio Unit
- Single Din Cage
- Mounting Sleeve
- Left & Right Brackets
- Plastic Trim Out
- Extraction Keys
- Installation Manual
- WiFi Antenna
- GPS Antenna
- 4G Antennas (x2)
- External Microphone
- USB Cables (x2)
- AR Cable
- Screen Ribbon Cable
- ISO Cable

- User Manual (this document)

## SETUP AND INSTALLATION

Professional installation is recommended. Ensure the vehicle's power is disconnected before beginning installation. Refer to the included Installation Manual for detailed wiring diagrams and specific vehicle requirements.

### Installation Considerations


- Depending on your car's specific model, you may require an additional installation frame kit, a special ISO harness, an amplifier adapter, or a CANbus decoder. These are not included and must be purchased separately if needed.
- The unit does not support the factory car GPS antenna, backup rear camera, Bluetooth, USB, or microphone. Only JOYING accessories are supported for these functions.
- DAB+ digital radio adapter, DVR, OBDII scanner, reverse camera, TPMS, and steering wheel controller are optional accessories and are not included in the standard package.

### Mounting the Unit


The unit features an upgraded installation structure allowing the fixing position of the left and right brackets to be extended or telescoped. This adaptability helps achieve the best fixing position for various car center consoles.

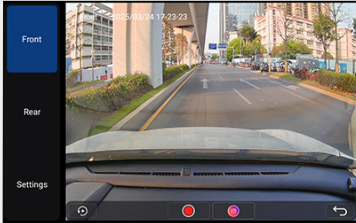
## Optional Accessories

( NOT included in the package )





**OBD2**  
(ASIN: B076CD78HT)  
Connected via Bluetooth to retrieve real-time data and trouble codes from your vehicle computer.






**AR Front Camera**  
(ASIN: B0CBX4N6V8)  
Record the front road in the background automatically while driving.





**AR Rear Camera**  
(ASIN: B0CBX39S8M)  
Switch to the reverse display automatically when reversing the car.



*Image: Illustration of the adjustable mounting brackets and their flexibility for different car consoles, part of a larger image showing multiple features.*

### Connecting Antennas and Cables

Connect the provided WiFi, GPS, and 4G antennas to their respective ports on the rear of the unit. Ensure all cables, including the ISO cable, USB cables, and external microphone, are securely connected according to the Installation Manual.

# Size & Package Contents

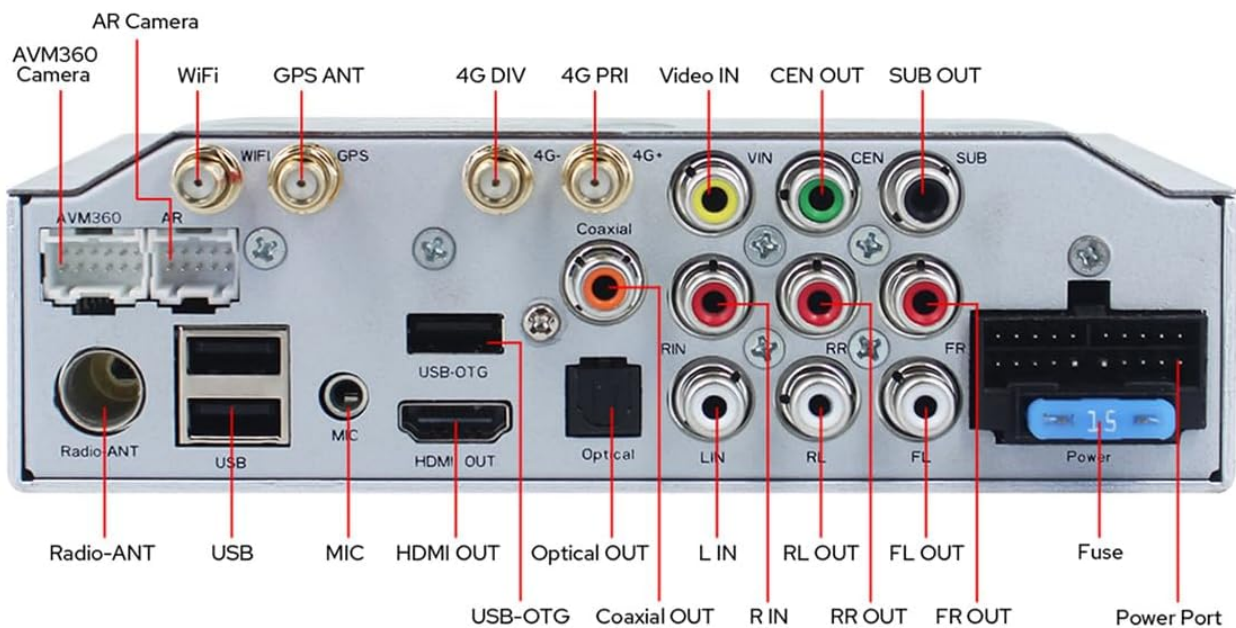
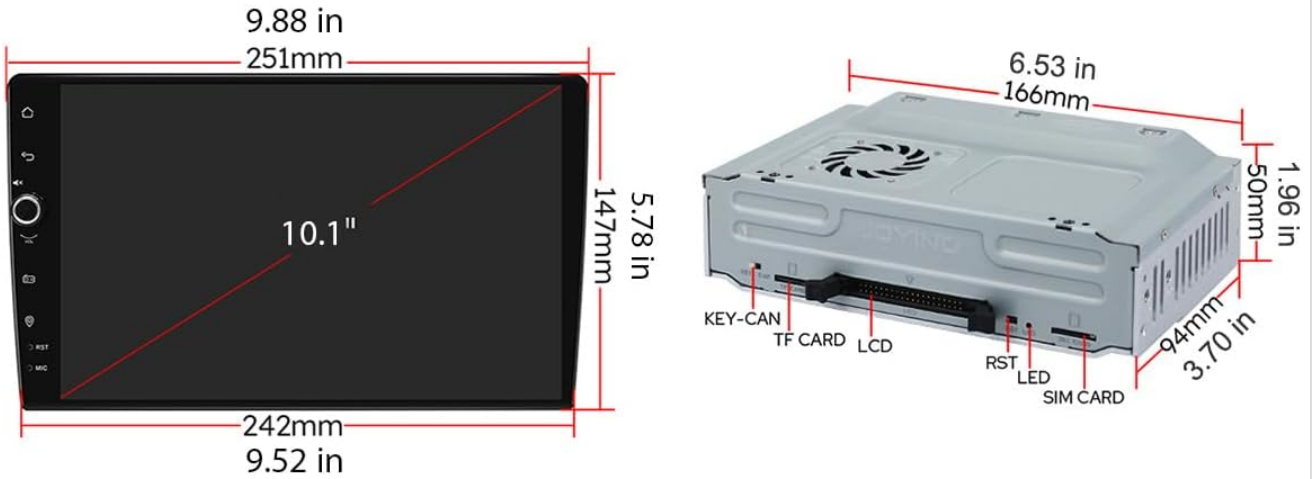


Image: Detailed view of the rear panel showing various input/output ports including Radio-ANT, USB, MIC, HDMI OUT, Optical, Coaxial, RCA, and Power.

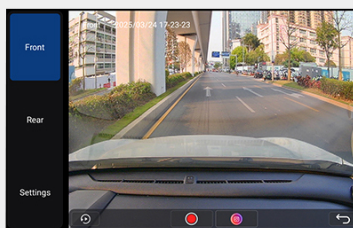
The unit features an independent WiFi antenna for stable signal quality and fast internet access. It supports 802.11a/b/g/n/AC standards across 2.4GHz/5GHz spectral bands.

## Optional Accessories

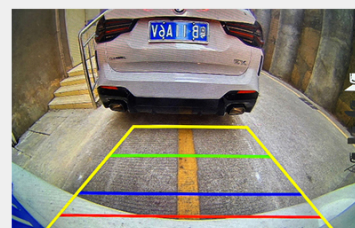
(NOT included in the package)



**OBD2**  
(ASIN: B076CD78HT)  
Connected via Bluetooth to retrieve real-time data and trouble codes from your vehicle computer.



**AR Front Camera**  
(ASIN: B0CBX4N6V8)  
Record the front road in the background automatically while driving.



**AR Rear Camera**  
(ASIN: B0CBX39S8M)  
Switch to the reverse display automatically when reversing the car.



Image: Close-up of the WiFi antenna connected to the unit, highlighting the improved signal, part of a larger image showing multiple features.

## OPERATING INSTRUCTIONS

### Power On and Initial Boot

The unit features a fast boot function. Once the car key is inserted, the unit will start up and enter the user interface within 2 seconds. The very first boot-up may take approximately 30-40 seconds.

### User Interface and Navigation

The system runs on Android, providing a familiar and customizable interface. Navigate using the capacitive touchscreen. The main screen displays various applications and widgets for quick access.



Image: The main screen of the JOYING Android Radio showing the launcher with navigation, media, and other application icons.

### CarPlay and Android Auto

Connect your mobile phone via USB cable or Bluetooth to utilize built-in Apple CarPlay or Android Auto. This allows you to access your phone's apps, navigation, make calls, and listen to music directly on the car stereo's screen.

## Cooling Upgraded

**Dual heat sink design:** Offers superior heat dissipation, improved temperature control, and enhanced performance stability.

**Set warning value for volume or CPU temp:**

When the CPU temperature or radio's volume rises and exceeds the warning value, the fan will be turned on automatically for cooling to avoid overheating.



Image: Side-by-side comparison of Apple CarPlay and Android Auto interfaces displayed on the unit.

## GPS Navigation

The unit includes precise GPS engines and an antenna for accurate positioning and real-time navigation. It supports BeiDou, GLONASS, and GPS satellite systems. Offline maps can be downloaded and used in supported areas. You can also synchronize mobile phone map data via CarPlay/Android Auto.

## Audio Features

Experience high-quality sound with the TDA7851 DSP chip and a 48-band graphic equalizer. The unit provides 4 audio outputs and 1 SUB output, supporting aftermarket amplifiers. For ultimate sound quality, utilize the Optical Fiber or Coaxial Digital Output if your external amplifier supports these inputs.

## Steering Wheel Control

Support steering wheel control, easy to switch songs, radio channel and adjust volume to provide you a safer and more enjoyable journey.

(Note: The car with CAN system needs to buy an extra canbus cable to keep this feature.)



Image: A user interacting with the music player on the car stereo, highlighting sound features and output options.

## Split-screen Multitasking

The unit supports split-screen functionality, allowing you to run two applications simultaneously. To activate, tap the recent apps icon, find the desired app, and tap the split-screen button. Then select the second app from recent apps.

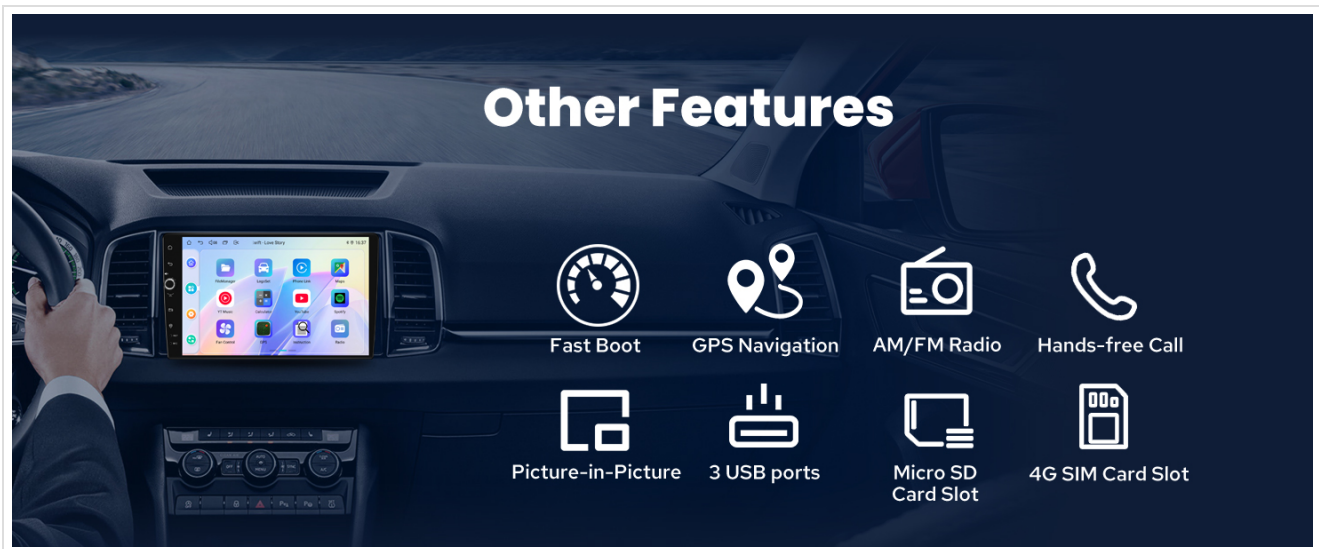


Image: A sequence of three images illustrating how to activate and use the split-screen feature.

## HDMI Output

The HDMI output provides a full digital image and sound-sending interface, allowing uncompressed audio and video signals to be output synchronously to external displays, such as rear-seat monitors. This enables passengers to watch movies while the driver uses navigation on the main screen.



Image: An in-car view showing the main unit displaying navigation and rear monitors playing video via HDMI output.  
Note: The HDMI cable is not included.

## Built-in 4G Module

Insert a SIM card into the unit for internet access. This module supports FDD-LTE (B2/B4/B5/B7/B12/B13/B14/B17/B25/B26/B38/B66/B71) and TDD-LTE (B41) types. Please note that it does not support making phone calls or sending SMS messages directly from the unit via the 4G module.

## Steering Wheel Control

The unit supports steering wheel controls, allowing you to easily switch songs, radio channels, and adjust volume for a safer driving experience. If your car has a CAN system, an additional CANbus cable may be required to enable this feature.

## WiFi Signal Upgraded

With an independent WiFi antenna, ensure stable signal quality and provide fast & smooth internet access.



**Standard: 802.11a/b/g/n/AC**  
**Spectral band: 2.4GHz/5GHz**

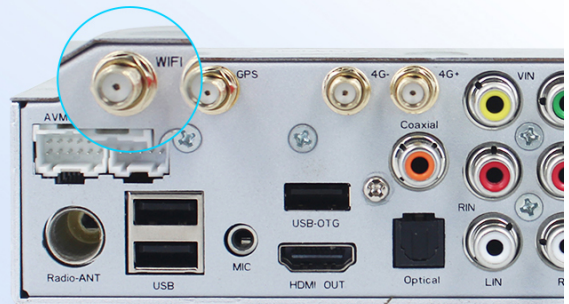


Image: A view of a car's steering wheel with controls, alongside the car stereo's interface for configuring steering wheel functions.

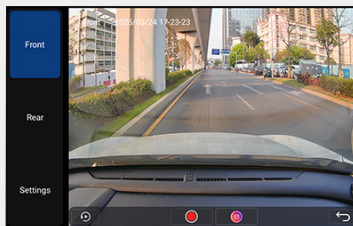
## Personalized Settings

Customize your unit with various personalized settings, including changing the car boot logo, selecting customizable wallpapers, and adjusting button colors to match your vehicle's interior lighting.

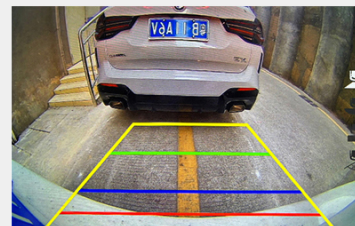
## Optional Accessories (NOT included in the package)



**OBD2**  
(ASIN: B076CD78HT)  
Connected via Bluetooth to retrieve real-time data and trouble codes from your vehicle computer.



**AR Front Camera**  
(ASIN: B0CBX4N6V8)  
Record the front road in the background automatically while driving.



**AR Rear Camera**  
(ASIN: B0CBX39S8M)  
Switch to the reverse display automatically when reversing the car.



Image: A collage of screenshots demonstrating the customization options for the car stereo's interface, including boot logo, wallpapers, and button lighting, part of a larger image showing multiple features.

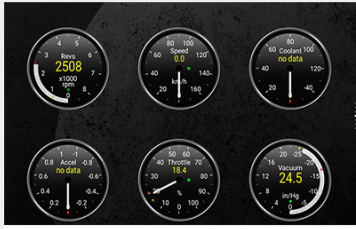
## MAINTENANCE

The JOYING Android Radio is designed for minimal maintenance. Keep the screen clean using a soft, dry, lint-free cloth. Avoid using harsh chemicals or abrasive materials.

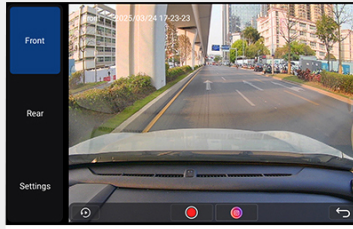
## Cooling System

The unit features a dual heat sink design for superior heat dissipation, improved temperature control, and enhanced performance stability. You can set a warning value for CPU temperature or radio volume. If the temperature or volume exceeds this value, the internal fan will automatically activate to prevent overheating.

## Optional Accessories ( NOT included in the package )



**OBD2**  
(ASIN: B076CD78HT)  
Connected via Bluetooth to retrieve real-time data and trouble codes from your vehicle computer.



**AR Front Camera**  
(ASIN: B0CBX4N6V8)  
Record the front road in the background automatically while driving.



**AR Rear Camera**  
(ASIN: B0CBX39S8M)  
Switch to the reverse display automatically when reversing the car.



Image: An internal view of the car stereo highlighting the dual heat sink and cooling fan, with a screen showing fan control settings, part of a larger image showing multiple features.

## TROUBLESHOOTING

If you encounter issues with your JOYING Android Radio, refer to the following common problems and solutions. For more complex issues, consult the included Installation Manual or contact customer support.

Problem	Possible Cause	Solution
Unit does not power on.	Incorrect wiring; Blown fuse; Insufficient power supply.	Check all power connections and fuses. Ensure the vehicle's ignition is on. Consult a professional for wiring verification.
No sound or distorted audio.	Speaker wires incorrectly connected; Volume too low; Audio settings misconfigured; External amplifier issue.	Verify speaker wire connections. Check volume levels and mute settings. Adjust equalizer and audio output settings. Ensure external amplifier is powered and connected correctly.
GPS signal is weak or inaccurate.	GPS antenna not properly installed or obstructed; Outdated map data.	Ensure the GPS antenna is securely connected and has a clear view of the sky. Update map data if necessary. Note: Does not support factory car GPS antenna.
Bluetooth connectivity issues.	Device not in pairing mode; Interference; Incorrect pairing procedure.	Ensure your mobile device's Bluetooth is on and in pairing mode. Delete previous pairings and try again. Move closer to the unit.
CarPlay/Android Auto not working.	Incorrect USB cable; Phone software issue; App permissions.	Use a high-quality USB data cable. Ensure your phone's software is updated. Check app permissions on your phone for CarPlay/Android Auto.

## SPECIFICATIONS

Below are the key technical specifications for the JOYING Android Radio 10.1 Inch Car Stereo (Model JY-UTS08N8).

<b>Feature</b>	<b>Detail</b>
Brand	JOYING
Model Name	Android Radio 10.1 Inch
Model Number	JY-UTS08N8
Operating System	Android
Screen Size	10.1 Inches
Display Type	LED, Capacitive Touchscreen
Memory Storage Capacity	128 GB
Connectivity Technology	Bluetooth, Ethernet, HDMI, USB, Wi-Fi
Supported Satellite Navigation	BeiDou, GLONASS, GPS
Audio Output Mode	Stereo (4 audio outputs, 1 SUB output)
Special Features	DSP, Equalizer, RCA, RDS, Rear View Camera Input, Built-in 4G Module, Optical Fiber and Coaxial Digital Output
Mounting Type	Panel Mount (Single Din)
Item Weight	1200 Grams

# Size & Package Contents

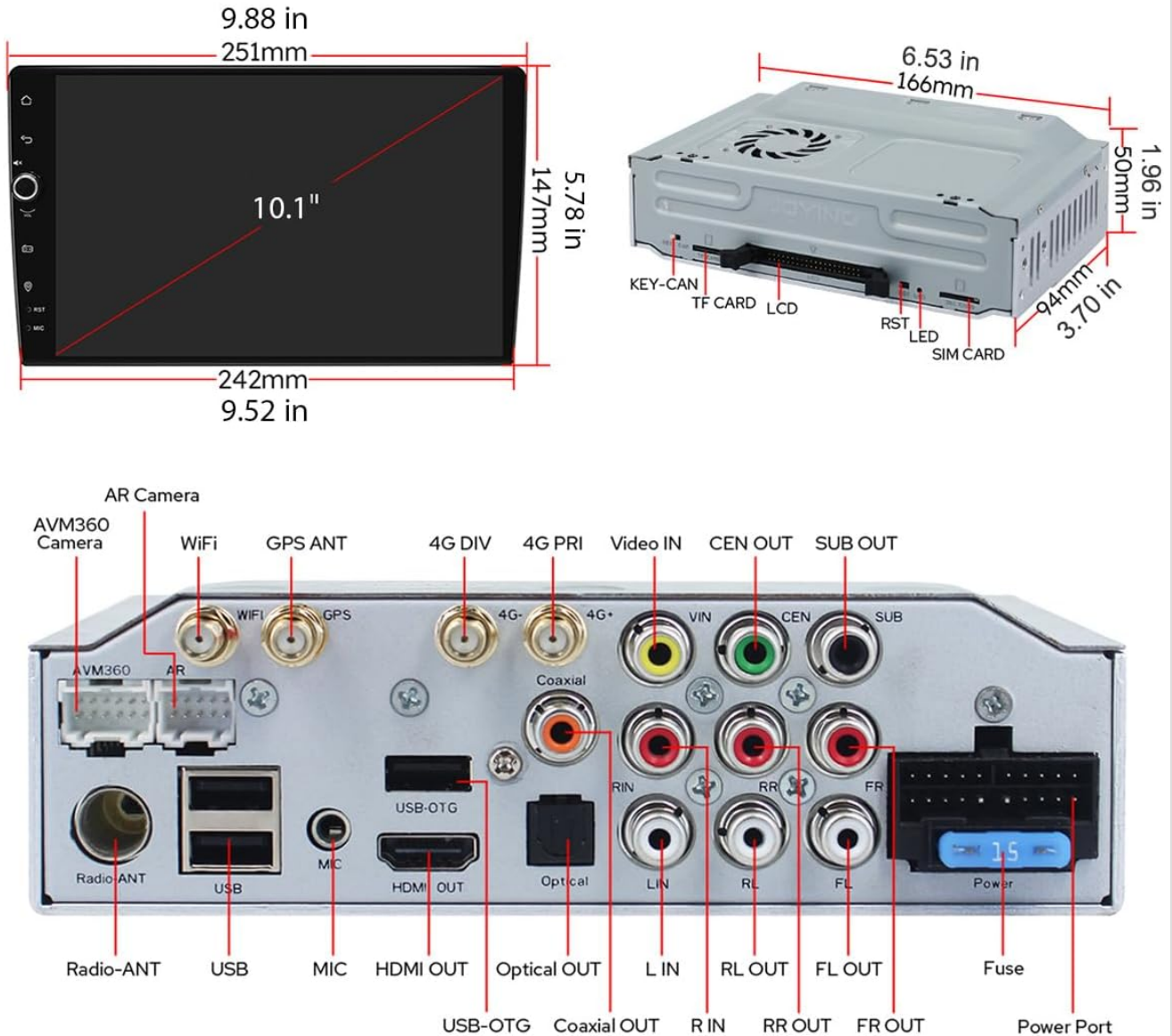


Image: Detailed diagram showing the dimensions of the 10.1-inch screen and the main unit, along with all rear panel connections.

## WARRANTY INFORMATION

The JOYING Android Radio 10.1 Inch Car Stereo (Model JY-UTS08N8) comes with a **2-year warranty** from the date of purchase. This warranty covers manufacturing defects and malfunctions under normal use. Please retain your proof of purchase for warranty claims. For detailed terms and conditions, refer to the warranty card included in your package or contact JOYING customer support.

## CUSTOMER SUPPORT

For further assistance, technical support, or inquiries regarding your JOYING Android Radio, please refer to the comprehensive Installation Manual included with your product. You may also visit the official JOYING website for FAQs, software updates, and contact information.

When contacting support, please have your product model number (JY-UTS08N8) and proof of purchase readily available.

