

VILTROX DC-A1

VILTROX DC-A1 7-inch Ultra-Bright Touchscreen Camera Field Monitor

Model: DC-A1 | Brand: VILTROX

1. INTRODUCTION

This manual provides detailed instructions for the proper setup, operation, and maintenance of your VILTROX DC-A1 7-inch Ultra-Bright Touchscreen Camera Field Monitor. Please read this manual thoroughly before using the product to ensure optimal performance and longevity.

The VILTROX DC-A1 is designed to enhance your filmmaking experience with its ultra-bright 2800-nit display, 4K HDMI input/output, and a suite of professional monitoring tools. Its robust design and intuitive controls make it suitable for various shooting environments.

2. WHAT'S IN THE BOX

Verify that all items listed below are included in your product package:

- VILTROX DC-A1 Field Monitor
- Sunshade Hood
- Monitor Mount (Cold Shoe Adapter)
- NP-F Type Battery
- USB-A to USB-C Cable
- HDMI to Mini HDMI Cable
- HDMI to HDMI Cable
- Carrying Case
- User Manual (this document)



Figure 2.1: Contents of the VILTROX DC-A1 package.

For a visual guide to the unboxing process and included accessories, please refer to the video below:

Video 2.1: VILTROX DC-A1 Open Box Video, demonstrating the package contents.

3. PRODUCT OVERVIEW

3.1 Display Features

The DC-A1 features a 7-inch Full HD IPS touchscreen with a resolution of 1920x1080. Its ultra-bright 2800-nit display ensures clear visibility even in direct sunlight. It offers a 170° wide viewing angle, full sRGB gamut, 1000:1 contrast ratio, and a 60Hz refresh rate for smooth, detailed playback.

Vibrant Clarity, Every Angle

7" Full HD IPS screen with 1920x1080 resolution and a 170° wide viewing angle-clear, sharp, and vibrant from any perspective. Full sRGB gamut deliver lifelike color fidelity, while a 1000:1 contrast ratio and 60Hz refresh rate ensure smooth, detailed playback even outdoors.

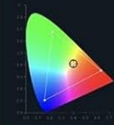


IPS

screen

8 Bit

Color Depth



sRGB/Rec.709

Coverage

1920x1080
resolution

170°

Ultra-Wide
Viewing Angle

60Hz

Refresh Rate



1000:1

Contrast Ratio

316 PPI

Figure 3.1: Key display specifications of the DC-A1 monitor.

3.2 Physical Components and Ports

The monitor is designed for portability, weighing approximately 348g with dimensions of 188 x 110 x 28mm. It includes a built-in cooling fan and vents to maintain optimal operating temperature.



Figure 3.2: Dimensions and weight of the DC-A1 monitor.



Figure 3.3: Internal cooling fan and vents for heat dissipation.

The monitor features multiple ports for connectivity and power:

- **HDMI In:** For receiving video signals from your camera.
- **HDMI Out:** For looping out video signals to another monitor or device.
- **3.5mm Headphone Jack:** For audio monitoring.
- **USB-C (Type-C In):** For power input.
- **DC In (12V):** For external DC power input.
- **USB-A:** For loading 3D LUTs and firmware updates.
- **NP-F Battery Slot:** For NP-F type batteries.



Figure 3.4: HDMI Input and Output ports.

3.3 Controls

The DC-A1 offers both full touchscreen operation and physical controls for quick adjustments:

- **Full Touchscreen:** Intuitive UI for finger-tip operation.
- **Side Dial:** A clickable dial for navigating menus and adjusting settings.
- **Custom Buttons (F1-F4):** Four customizable function buttons for quick access to frequently used features.
- **Power Switch:** A physical on/off switch for immediate power control.

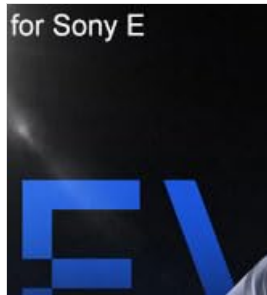


Figure 3.5: Side dial for menu navigation and adjustments.



Figure 3.6: Customizable function buttons.

4. SETUP

4.1 Battery Installation

To power the monitor using an NP-F type battery:

1. Ensure the monitor is powered off.
2. Align the NP-F battery with the battery slot on the back of the monitor.
3. Gently slide the battery into the slot until it clicks securely into place.
4. To remove, press the release button (if present) and slide the battery out.



Figure 4.1: NP-F battery slot on the rear of the monitor.

4.2 Mounting the Monitor

Use the included cold shoe adapter to mount the monitor to your camera's hot shoe or other compatible accessories:

1. Attach the monitor to the cold shoe adapter via the 1/4"-20 screw threads located on the bottom or side of the monitor.
2. Securely tighten the screw.
3. Slide the cold shoe adapter into your camera's hot shoe mount.
4. Tighten the locking mechanism on the cold shoe adapter to prevent rotation.



Figure 4.2: DC-A1 monitor mounted on a camera.

4.3 Connecting to Camera

Connect your camera to the monitor using the appropriate HDMI cable:

1. Ensure both the monitor and camera are powered off.
2. Connect one end of the HDMI cable to your camera's HDMI output port.
3. Connect the other end of the HDMI cable to the HDMI In port on the VILTROX DC-A1 monitor.
4. Power on the monitor and then your camera. The video feed should appear on the monitor.



Figure 4.3: HDMI cable connected to the monitor.

5. OPERATING INSTRUCTIONS

5.1 Powering On/Off

Use the physical power switch located on the side of the monitor to turn the device on or off. This provides immediate control over the monitor's power state.

5.2 Menu Navigation and Touchscreen Controls

The DC-A1 features a responsive touchscreen interface. Tap on icons to access various settings and monitoring tools. The side dial can also be used to navigate menus and confirm selections.



Figure 5.1: Touchscreen interface for adjusting monitor settings.

5.3 Professional Monitoring Tools

The monitor includes a comprehensive set of tools to assist with accurate exposure, focus, and color management:

- **Focus Peaking:** Highlights in-focus areas for precise manual focusing.
- **False Color:** Displays exposure levels using a color overlay.
- **Zebras:** Indicates overexposed areas with striped patterns.
- **Waveform:** Visualizes the luminance and chrominance levels of your video signal.
- **Histogram:** Shows the distribution of tones in your image.
- **3D LUT Support:** Allows you to load custom Look Up Tables for accurate color preview.
- **Vectorscope:** Displays color information and saturation.
- **Framing Guide Lines:** Assists with composition.
- **Anamorphic De-Squeeze:** Corrects the aspect ratio for anamorphic lenses.

Comprehensive Professional Monitoring Tools

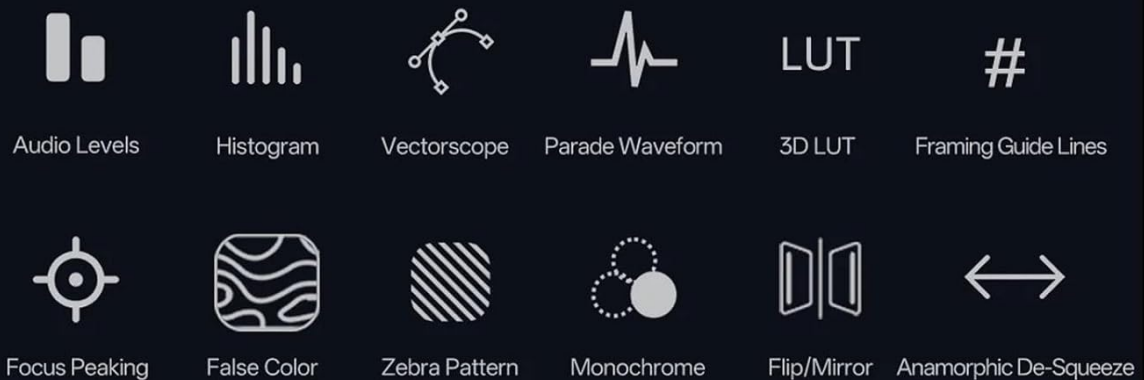


Figure 5.2: Professional monitoring tools available on the DC-A1.

For a detailed demonstration of the monitor's functions, settings, and screen features, please watch the video below:

Video 5.1: VILTROX DC-A1 Camera Monitor - Functions, Settings, and Screen Overview.

5.4 Sunshade Hood

The included sunshade hood can be easily attached to the monitor to reduce glare and improve visibility in bright outdoor conditions. It also acts as a screen protector when folded for transport.



Figure 5.3: Monitor with sunshade hood attached.

6. POWER OPTIONS

The VILTROX DC-A1 offers flexible power options for continuous operation:

- **NP-F Type Battery:** Insert a compatible NP-F battery into the rear slot. Some NP-F batteries can also be charged via USB-C directly.
- **USB-C (Type-C In):** Connect a USB-C power source (e.g., power bank, wall adapter) to the Type-C In port.

- **DC In (12V):** Connect a 12V DC power adapter to the DC In port for continuous power.

7. MAINTENANCE

7.1 Cleaning

- Use a soft, lint-free cloth to clean the screen and body of the monitor.
- For stubborn smudges, lightly dampen the cloth with water or a screen-safe cleaning solution.
- Avoid using harsh chemicals or abrasive materials, as these can damage the screen coating.

7.2 Storage

- When not in use, store the monitor in its protective carrying case.
- Keep the monitor in a cool, dry place away from direct sunlight and extreme temperatures.
- Remove batteries if storing for extended periods to prevent leakage.

8. TROUBLESHOOTING

- **No Signal:** Ensure HDMI cables are securely connected to both the camera and monitor. Verify the camera's HDMI output settings are correct.
- **Monitor Not Powering On:** Check battery charge level or external power connection. Ensure the power switch is in the 'On' position.
- **Screen Flickering/Distortion:** Try a different HDMI cable. Check for interference from other electronic devices.
- **Overheating:** Ensure cooling vents are not obstructed. Reduce screen brightness if operating in very hot environments.

9. SPECIFICATIONS

Feature	Specification
Brand	VILTROX
Model	DC-A1
Screen Size	7 Inches
Resolution	1920x1080 (FHD 1080p)
Brightness	2800 nits
Contrast Ratio	1000:1
Viewing Angle	170°
Refresh Rate	60Hz
Input/Output	HDMI In/Out (supports up to 4K 60Hz)
Power Input	NP-F Battery, USB-C, DC 12V
Item Weight	13.4 ounces (approx. 348g)

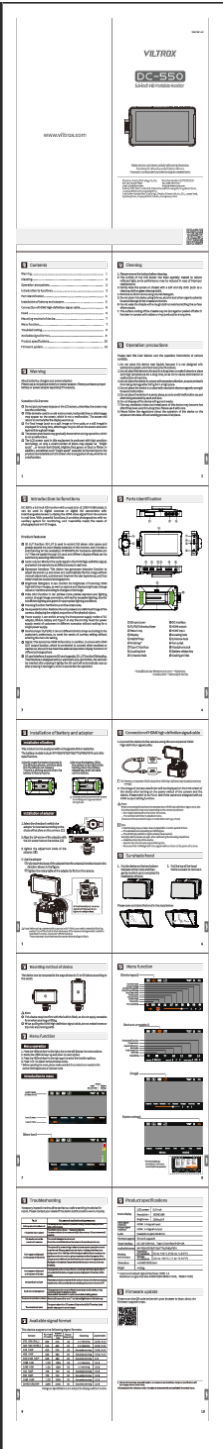
Feature	Specification
Package Dimensions	12.2 x 7.09 x 3.54 inches

10. WARRANTY AND SUPPORT

VILTROX products typically come with a limited manufacturer's warranty. Please refer to the warranty card included in your package for specific terms and conditions.

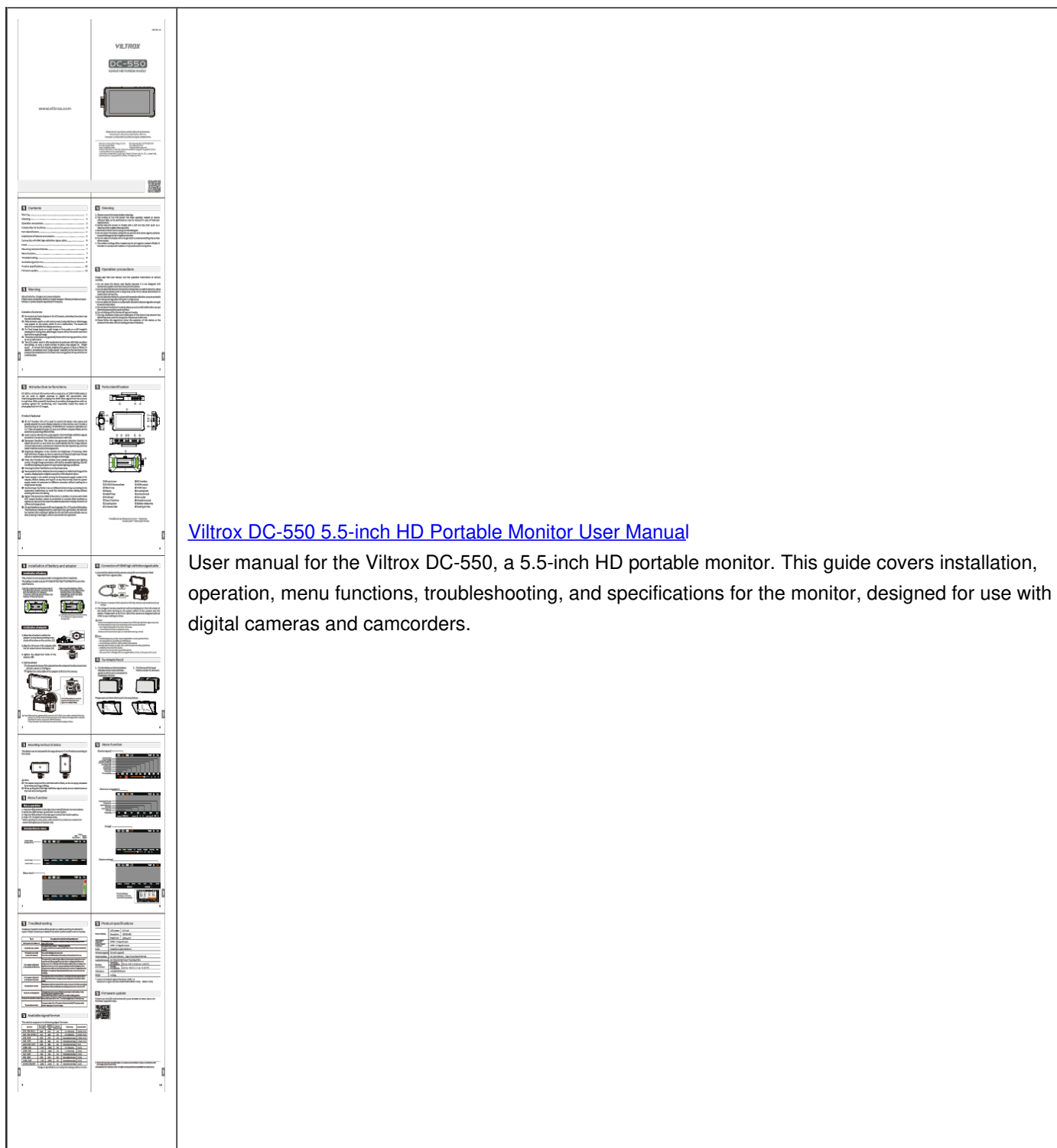
For technical support, troubleshooting assistance, or warranty claims, please contact VILTROX customer service through their official website or the contact information provided in your product documentation.

Related Documents - DC-A1



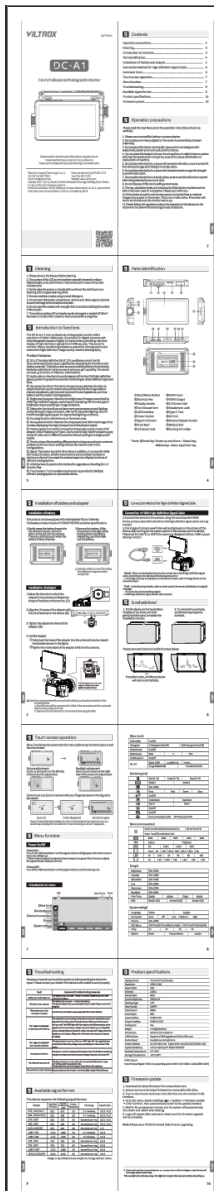
[Viltrox DC-550 5.5-inch HD Portable Monitor User Manual](#)

User manual for the Viltrox DC-550, a 5.5-inch HD portable monitor with 1920x1080 resolution, featuring 3D LUT, audio monitoring, gyroscope, brightness histogram, false color, focus peaking, de-squeeze, multiple power options, and shortcut keys. Includes installation, operation, menu functions, troubleshooting, specifications, and available signal formats.




[Viltrox DC-550 5.5-inch HD Portable Monitor User Manual](#)

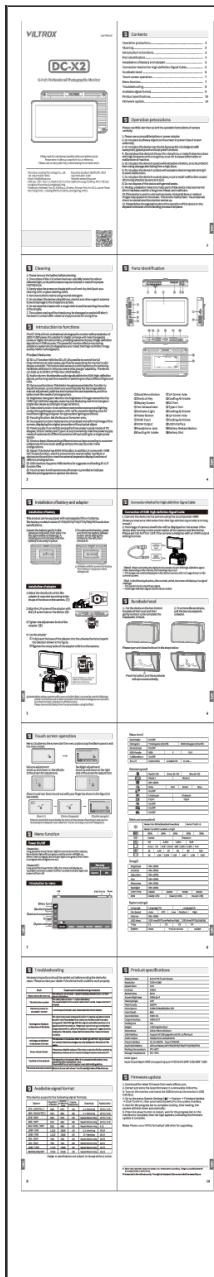
User manual for the Viltrox DC-550, a 5.5-inch HD portable monitor. This guide covers installation, operation, menu functions, troubleshooting, and specifications for the monitor, designed for use with digital cameras and camcorders.



[Viltrox DC-A1 7-Inch Professional Photography Monitor User Manual](#)

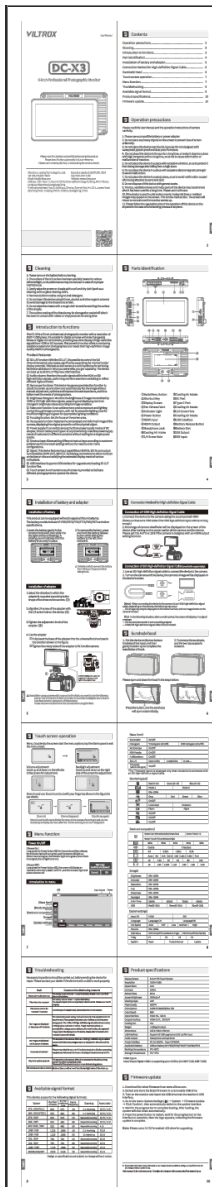
This manual provides detailed instructions for the Viltrox DC-A1, a 7-inch professional photography monitor. It covers setup, features, operation, troubleshooting, and specifications for optimal use in photography and videography.

	<div data-bbox="341 721 1219 750" data-label="Section-Header"> <h3>Viltrox DC-550 PRO 5.5-inch HD Portable Touchscreen Monitor User Manual</h3> </div> <div data-bbox="341 761 1468 871" data-label="Text"> <p>This user manual provides detailed instructions for the Viltrox DC-550 PRO, a 5.5-inch HD portable touchscreen monitor. Learn about its features, setup, operation, menu functions, troubleshooting, and specifications.</p> </div>
---	--



[Viltrox DC-X2 6-inch Professional Photography Monitor User Manual](#)

This user manual provides detailed instructions for the Viltrox DC-X2, a 6-inch professional photography monitor. It covers features such as 3D LUT, audio columns, gyroscope function, brightness histogram, false color, focus assist, and more. Learn about installation, operation, troubleshooting, and specifications.



[Viltrox DC-X3 6-Inch Professional Camera Monitor User Manual](#)

This manual provides comprehensive instructions for the Viltrox DC-X3, a 6-inch professional camera monitor. It covers features like 3D LUT, audio monitoring, gyroscope function, brightness histogram, false color, focus assist, and more. Learn about component identification, battery installation, signal connections, touchscreen operation, menu functions, troubleshooting, available signal formats, product specifications, and firmware updates.