

## VJIANGER W08

# VJIANGER 4K Digital Camera User Manual

Model: W08 (YL15-W08-C-Light Pink)

## 1. INTRODUCTION

This manual provides comprehensive instructions for operating your VJIANGER 4K Digital Camera. Please read this manual thoroughly before use to ensure proper operation and to maximize the camera's capabilities. This camera is designed for photography and vlogging, offering high-resolution imaging and versatile features for beginners and content creators.

## 2. PRODUCT OVERVIEW

The VJIANGER 4K Digital Camera (Model W08) is a compact and feature-rich device. Key components include:

- **64MP Photo Sensor:** For high-resolution still images.
- **4K Video Recording:** Capable of recording smooth 4K UHD 2160p videos.
- **3-inch 180° Flip Screen:** Ideal for vlogging and self-portraits.
- **18X Digital Zoom:** Allows for magnification of subjects.
- **Built-in Fill Light/Flash:** For improved low-light performance.
- **Internal Microphone and Speaker:** For audio recording and playback.
- **Wi-Fi Connectivity:** For easy transfer of photos and videos to smart devices.
- **Webcam Functionality:** Can be used as a PC camera.



Figure 2.1: VJIANGER 4K Digital Camera (Light Pink) and included accessories.



WD08 Digital Camera

## Standard Combo



Camera



Instructions



Lanyard



32GB Micro SD Card



Batteries



Type C cable

Figure 2.2: Standard Combo contents: Camera, Instructions, Lanyard, 32GB Micro SD Card, Batteries, Type-C Cable.

## 3. SETUP

### 3.1 Battery Installation

The camera requires 1 Lithium Ion battery (included). Ensure correct polarity when inserting the battery.

1. Open the battery compartment cover located on the side of the camera.
2. Insert the battery according to the polarity indicators (+/-) inside the compartment.
3. Close the battery compartment cover securely.



Figure 3.1: Location of memory card slot, data cable socket, and battery compartment.

## 3.2 Micro SD Card Installation

A 32GB Micro SD card is included. The camera supports Micro SD cards for storage.

1. Locate the memory card slot next to the battery compartment.
2. Insert the Micro SD card into the slot until it clicks into place.
3. To remove, gently press the card until it springs out.

## 3.3 Initial Charging

Before first use, fully charge the camera battery using the provided Type-C USB cable.

1. Connect the Type-C cable to the camera's data cable socket.
2. Connect the other end of the cable to a USB power adapter (not included) or a computer USB port.
3. The charging indicator will illuminate. It will turn off or change color when fully charged.

# 4. OPERATING INSTRUCTIONS

## 4.1 Power On/Off

Press and hold the power button to turn the camera on or off.

## 4.2 Focus Mode Adjustment

If images appear blurry, adjust the focus mode from "Fixed focus" to "Auto focus" in the camera settings.

Your browser does not support the video tag.

Video 4.1: Demonstrates how to change the focus mode from fixed to auto focus for clearer images. This video is provided by the seller.

## 4.3 Photo and Video Modes

The camera offers various modes for capturing content:

- **Photo Mode:** Standard still image capture.



- **Continuous Shooting:** Captures multiple photos in quick succession.
- **Timed Shooting:** Sets a delay before taking a photo.
- **Auto Shooting:** Automatic settings for ease of use.
- **Video Mode:** Records standard video.
- **Time-lapse Recording:** Captures frames at intervals to create a sped-up video.
- **Slow-motion Recording:** Records at a higher frame rate for slow-motion playback.
- **Loop Recording:** Continuously records, overwriting older footage when storage is full.



## Webcam Function & Live Streaming

Insert the USB cable and switch the camera to "PC Camera" mode, perfect for video calling, live streaming, blogging, vlogging, online teaching, etc

Figure 4.1: Overview of the camera's 9 multi-function modes, including Photo, Video, Continuous Shooting, Slow Motion Video, Timer, Auto, Time Lapse Video, Loop Video, and Video + Photo.

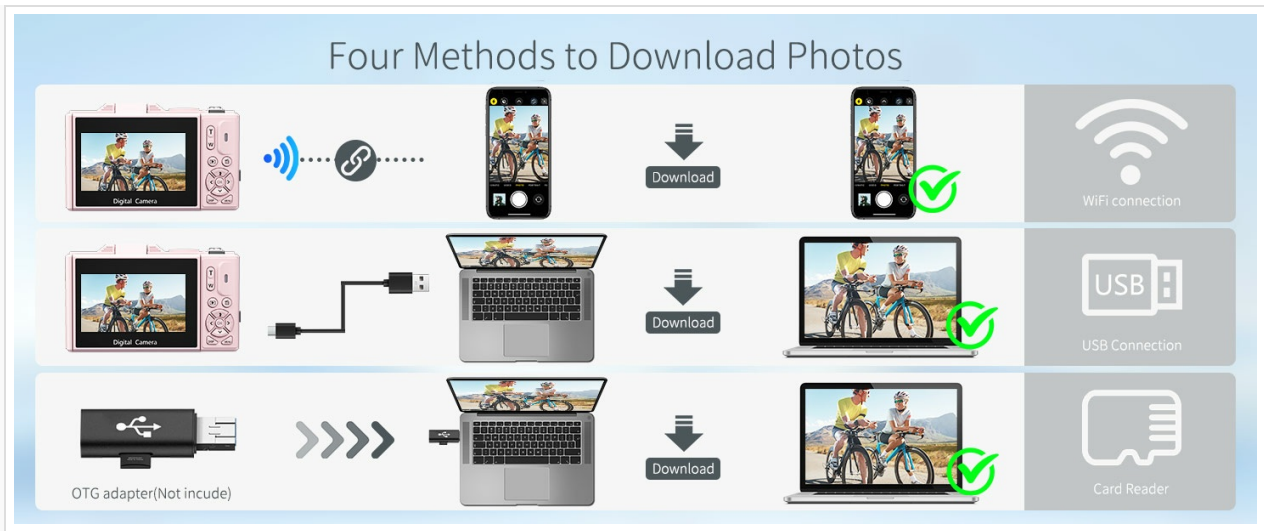


Figure 4.2: Detailed view of the four photography modes available.

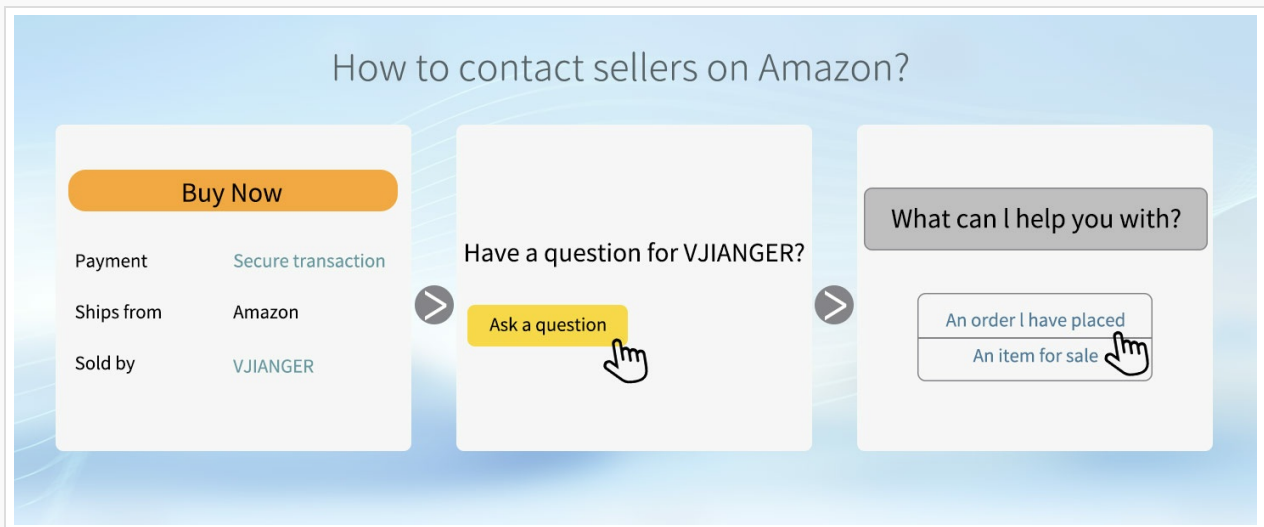


Figure 4.3: Detailed view of the four video modes available.

#### 4.4 Digital Zoom and Flash

Use the W/T buttons to control the 18X digital zoom. The built-in flash can be activated for low-light conditions.



Figure 4.4: The camera features 18X digital zoom with autofocus capabilities.

#### 4.5 Wi-Fi Connectivity and File Transfer



Connect the camera to your smartphone or tablet via Wi-Fi for easy photo and video transfer and remote control.

1. Enable Wi-Fi on the camera through the menu settings.
2. Download the companion app to your smart device.
3. Connect your device to the camera's Wi-Fi network.
4. Use the app to download files, control the camera remotely, or view playback.



Figure 4.5: Built-in Wi-Fi allows for quick and seamless content uploading and sharing.

Alternatively, you can transfer files via USB connection or by using a card reader:

- **USB Connection:** Connect the camera to a PC using the Type-C cable. Select "Mass Storage Mode" on the camera.
- **Card Reader:** Remove the Micro SD card and insert it into a card reader connected to your computer.

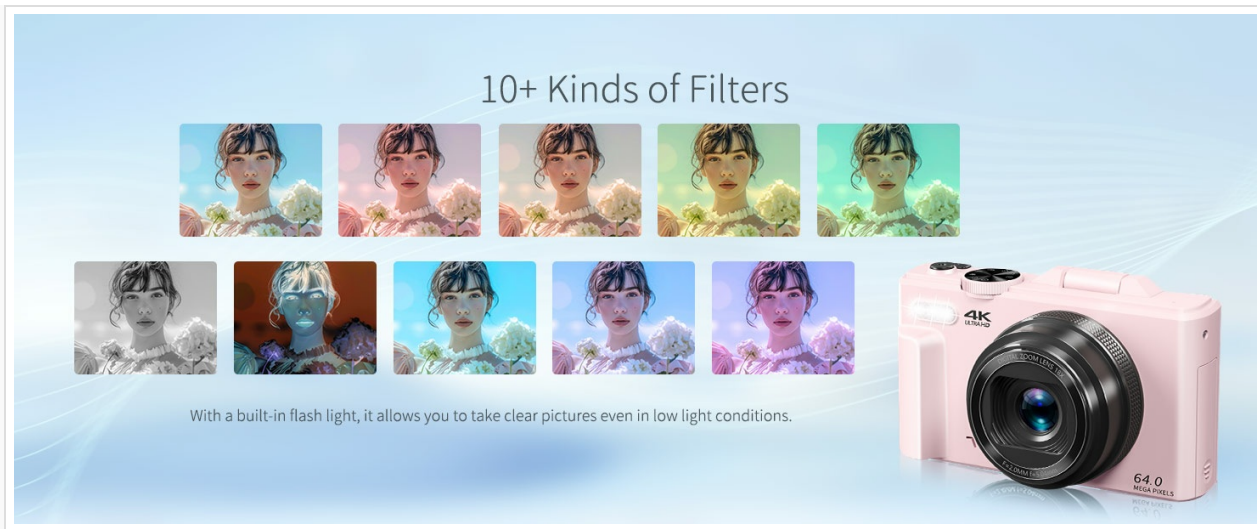


Figure 4.6: Various methods for downloading photos, including Wi-Fi, USB connection, and using an OTG adapter/card reader.

## 4.6 Webcam Functionality

The camera can function as a webcam for live streaming and video calls.

1. Connect the camera to your PC using the Type-C USB cable.
2. On the camera screen, select "PC Camera" mode.
3. Your computer should recognize the camera as a webcam.



# Multi-function Camera

## 9 Modes



Figure 4.7: The camera can be used as a webcam for video calls and live streaming by connecting it to a PC.

Your browser does not support the video tag.

Video 4.2: Demonstration of connecting the camera to a PC and selecting "PC Camera" mode to use it as a webcam. This video is provided by the seller.

## 5. MAINTENANCE

- **Cleaning:** Use a soft, dry cloth to clean the camera body. For the lens, use a specialized lens cleaning cloth and solution. Avoid abrasive materials.
- **Storage:** Store the camera in a cool, dry place away from direct sunlight and extreme temperatures. Remove the battery if storing for extended periods.
- **Battery Care:** To prolong battery life, avoid fully discharging the battery frequently. Charge it regularly.

## 6. TROUBLESHOOTING

Problem	Possible Cause	Solution
Blurry images/videos	Incorrect focus mode (Fixed Focus)	Change Focus Mode to "Auto focus" in settings. (Refer to Section 4.2)
Camera not turning on	Low or uncharged battery; incorrectly inserted battery.	Charge the battery. Ensure the battery is inserted with correct polarity.
Cannot transfer files	Incorrect USB mode selected; Wi-Fi not connected.	Ensure "Mass Storage Mode" is selected when connecting via USB. Verify Wi-Fi connection and app settings.
Poor sound quality in recorded videos	Environmental noise; microphone obstruction.	Record in quieter environments. Ensure microphone is not covered.

## 7. SPECIFICATIONS

Feature	Detail
Brand	VJIANGER
Model Name	W08
Effective Still Resolution	64 MP
Video Resolution	1080p, 4K UHD 2160p
Digital Zoom	18 x
Screen Size	3 Inches
Display Type	LCD
Connectivity Technology	Wi-Fi
Photo Sensor Technology	CMOS
Image Stabilization	Digital
External Memory Size	32 GB (Micro SD)
Battery Type	Lithium Ion
Battery Average Life	2 Hours
Form Factor	Compact
Material	Metal, Plastic

## 8. WARRANTY AND SUPPORT

For product support, warranty information, or to ask a question, please visit the VJIANGER store on Amazon or



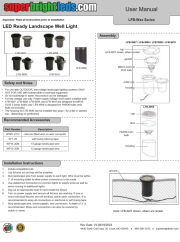
contact the seller directly through the Amazon platform.

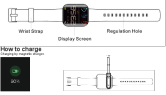
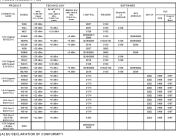
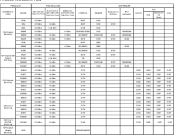
Visit VJIANGER  
Store



Figure 8.1: Guide on contacting the seller for support via Amazon.

Related Documents - W08

	<p><a href="#">Kenwood KSC-35S Rapid Charger Instruction Manual</a></p> <p>User guide and safety instructions for the Kenwood KSC-35S rapid battery charger, detailing charging procedures, status indicators, and specifications for compatible Kenwood battery packs. For ordering information, visit <a href="http://www.ameradio.com">http://www.ameradio.com</a>.</p>
	<p><a href="#">YORTOT W08 White Noise Machine User Manual - Features, Setup, and Troubleshooting</a></p> <p>Comprehensive user manual for the YORTOT W08 White Noise Machine. Learn about its features, how to set it up, adjust sounds, volume, night light, and understand power specifications and FCC requirements.</p>
	<p><a href="#">Super Bright LEDs Landscape Well Light User Manual</a></p> <p>User manual for Super Bright LEDs LFB-Wxx series landscape well lights, providing installation instructions, safety notes, and recommended accessories.</p>

<div><div>Smart Watch</div><div>User Guide</div><div></div><div>How to charge</div><div>Wearing method</div><div>On/off</div><div>Watch Operation</div></div>	<p><a href="#">Smart Watch User Guide</a></p> <p>User guide for the Smart Watch, covering setup, operation, app connectivity, and troubleshooting.</p>
<div><div>SALTO</div><div>Compliance</div><div></div></div>	<p><a href="#">SALTO Compliance Information for Access Control Products</a></p> <p>This document outlines the compliance details for various SALTO Systems access control products, including technical specifications, declarations of conformity for EU and UKCA, and legal warnings.</p>
<div><div>SALTO</div><div>Compliance</div><div></div></div>	<p><a href="#">SALTO Compliance and Product Information</a></p> <p>This document outlines SALTO Systems' compliance statements for various access control products, including EU and UKCA declarations of conformity. It details product specifications, technical data, and important safety warnings related to battery usage and electrical operation. The document also provides contact information and links to further compliance details.</p>