

NIMO Nimo N171

NIMO 17.3" IPS FHD Laptop User Manual

MODEL: NIMO N171

1. Introduction

Thank you for choosing the NIMO 17.3" IPS FHD Laptop. This manual provides essential information for setting up, operating, maintaining, and troubleshooting your device. Please read it carefully to ensure optimal performance and longevity of your laptop.

The NIMO N171 laptop features a 17.3-inch Full HD IPS display, powered by an Intel Core i3-1215U processor, 8GB of DDR4 RAM, and a 256GB PCIe SSD. It comes pre-installed with Windows 11 Home and includes a backlit keyboard with a fingerprint reader for enhanced security and convenience.



Image: NIMO 17.3 inch IPS FHD Laptop, showcasing its large display and sleek design.

2. Setup

2.1 Unboxing and Initial Inspection

Carefully remove all components from the packaging. Ensure the following items are present:

- 1 x Nimo N171 Laptop
- 1 x Type-C 65W PD Fast Charger
- 1 x User Manual (this document)
- Windows 11 Home (pre-installed)

Inspect the laptop for any physical damage. If any damage is found, contact customer support immediately.

2.2 Charging the Laptop

Before first use, fully charge the laptop battery. Connect the provided 65W Type-C PD Fast Charger to the laptop's Type-C charging port and then to a power outlet. The charging indicator light will illuminate.

65W Type-C PD Charger, One Charger for All

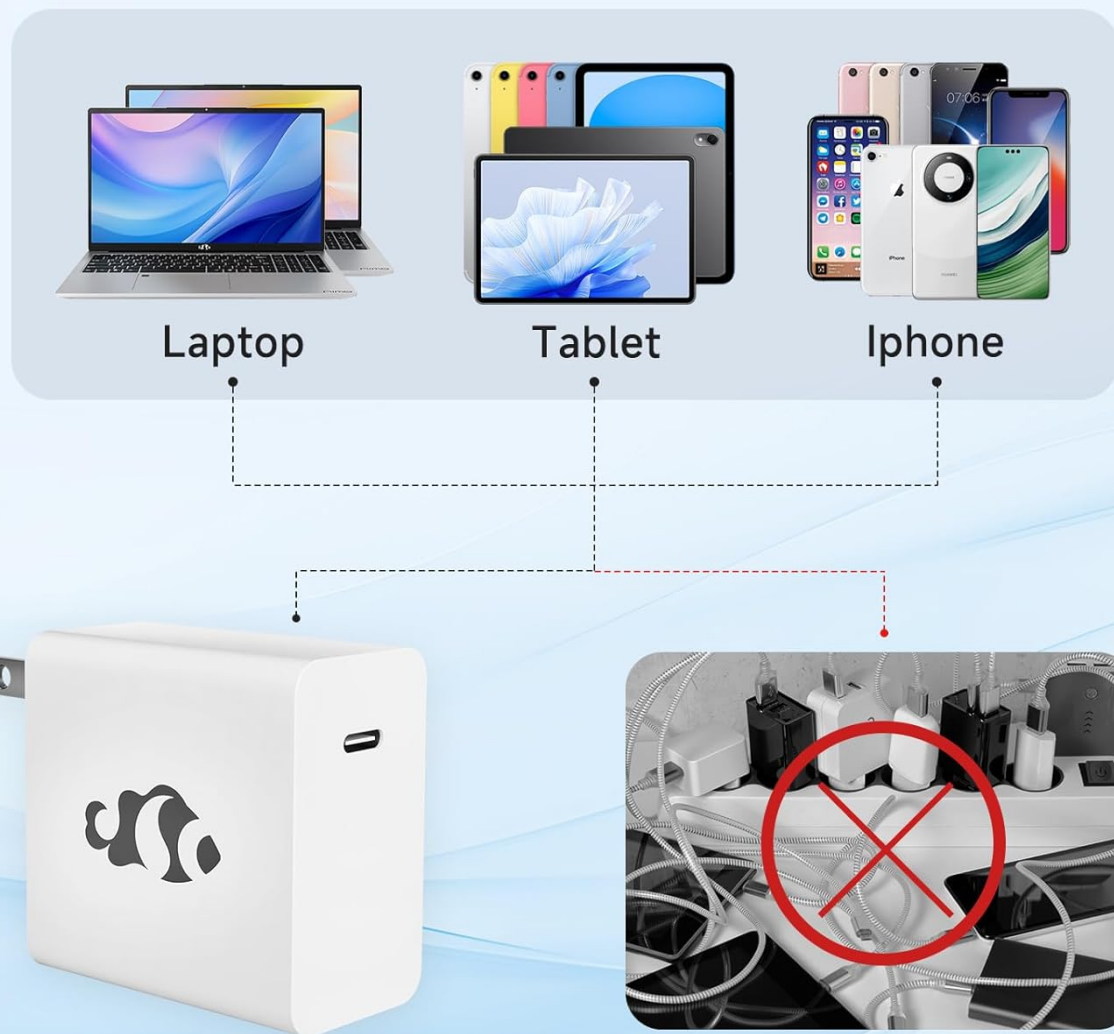


Image: The 65W Type-C PD Charger, illustrating its compact design and compatibility with various devices.

2.3 Initial Power On and Windows Setup

Press the power button located on the laptop. The laptop will boot up and guide you through the Windows 11 Home setup process. Follow the on-screen instructions to configure language, region, network, and user accounts.

3. Operating Instructions

3.1 Display and Visuals

The NIMO N171 features a 17.3-inch Full HD (1920x1080) IPS anti-glare display, offering wide viewing angles and vibrant colors. Adjust brightness using the function keys (Fn + Fx keys, refer to keyboard layout for specific keys).

17.3-inch FHD Widescreen for Visual Enjoyment



FHD 1920*1080



IPS



Bright View



Eye Protection



Image: The 17.3-inch FHD IPS display, highlighting its immersive viewing experience with narrow bezels.

3.2 Keyboard and Input

The laptop is equipped with a full-size backlit keyboard and a numeric keypad. The backlight can be toggled or adjusted using dedicated function keys. The touchpad supports multi-touch gestures for navigation.

Backlit and full keyboard

Easy to see and use keyboard in darkness



Backlit



Webcam Shield



Fingerprint



Numeric Keypad



Image: Close-up of the backlit keyboard and integrated fingerprint reader on the touchpad.

3.3 Fingerprint Reader

For secure and quick login, utilize the built-in fingerprint reader located on the touchpad. Configure your fingerprint in Windows Settings > Accounts > Sign-in options.

3.4 Webcam Privacy Shield

The integrated webcam features a physical privacy shield. Slide the cover to the left to open the camera and to the right to close it, ensuring your privacy when the camera is not in use.

3.5 Connectivity Ports

The laptop offers a variety of ports for connecting peripherals and external displays:

- **USB 3.2 Gen1:** High-speed data transfer.
- **USB 2.0:** Standard USB connectivity.
- **USB Type-C:** For data transfer and charging (65W PD).
- **Standard HDMI 1.4:** Connect to external monitors or TVs.
- **Micro SD Card Slot:** Expand storage or transfer files from memory cards.

- **Audio Jack:** Connect headphones or external speakers.
- **Kensington Lock Slot:** For physical security.

Multiple Ports for Greater Versatility

Consider multi-use scenarios for you



Image: Diagram illustrating the various connectivity ports on the NIMO laptop.

3.6 Battery Management

The laptop is equipped with a large capacity battery, providing up to 7 hours of usage. For optimal battery health, avoid frequently draining the battery completely and store the laptop in a cool, dry place.

Large Capacity Battery

Rechargeable battery life of up to 7 hours,
ready for business trip or traveling



Image: Visual representation of the laptop's battery capacity and typical usage scenarios.

4. Maintenance

4.1 Cleaning

Use a soft, lint-free cloth to clean the screen and exterior surfaces. For stubborn smudges, dampen the cloth slightly with water or a screen-safe cleaner. Avoid harsh chemicals or abrasive materials.

4.2 Software Updates

Regularly check for and install Windows updates to ensure your system has the latest security patches and performance improvements. You can find updates in Windows Settings > Windows Update.

4.3 Storage Management

Periodically review and manage your 256GB SSD storage. Delete unnecessary files, uninstall unused applications, and consider cloud storage for large files to maintain optimal system performance.

5. Troubleshooting

This section addresses common issues you might encounter with your NIMO laptop.

- **Laptop does not power on:** Ensure the charger is properly connected and the battery has sufficient charge. Try holding the power button for 10-15 seconds to perform a hard reset.
- **Screen is blank or flickering:** Restart the laptop. If connected to an external display, try disconnecting and reconnecting the HDMI cable.
- **Wi-Fi or Bluetooth connectivity issues:** Check if Wi-Fi/Bluetooth is enabled in Windows settings. Restart your router or the laptop. Update network drivers if necessary.
- **Slow performance:** Close unnecessary applications. Check for background processes consuming high resources (Task Manager). Ensure sufficient free storage space on the SSD.
- **Keyboard or touchpad not responding:** Restart the laptop. Ensure no external devices are interfering.

If you encounter persistent issues not covered here, please refer to the Warranty and Support section for assistance.

6. Specifications

Detailed technical specifications for the NIMO N171 Laptop:

Feature	Specification
Brand	NIMO
Model Name	Nimo N171G
Screen Size	17.3 Inches
Screen Resolution	1920 x 1080 pixels (FHD)
Processor	Intel Core i3-1215U (6 Cores, up to 4.4 GHz)
RAM	8 GB DDR4 (3200 MHz)
Hard Drive	256 GB PCIe SSD
Graphics Coprocessor	Integrated Graphics (Intel)
Operating System	Windows 11 Home
Wireless Type	802.11a/b/g/n/ac (Wi-Fi 6)
Bluetooth	Bluetooth 5.2
USB Ports	1x USB 2.0, 3x USB 3.0, 2x USB Type-C (1 for PD charging)
HDMI Port	HDMI 2.1
Webcam	2 MP Rear Webcam Resolution (with privacy shield)
Special Features	Fingerprint Reader, Backlit Keyboard, HD Audio, Memory Card Slot, Numeric Keypad
Average Battery Life	5-7 Hours
Item Weight	4.6 pounds
Product Dimensions	15.66 x 9.99 x 0.74 inches

7. Warranty and Support

NIMO is committed to providing high-quality products and customer satisfaction.

7.1 Manufacturer's Warranty

Your NIMO laptop is covered by a comprehensive **2-Year Manufacturer's Warranty** from Nimo Direct Inc. This warranty covers defects in materials and workmanship under normal use. Please retain your proof of purchase for warranty claims.



Image: Illustration of NIMO's 2-year support commitment.

7.2 90-Day Hassle-Free Returns

Nimo Direct Inc. offers a **90-Day Return Policy**. If you are not satisfied with your purchase, you may return the product within 90 days from the date of purchase. Please refer to the return policy details provided at the time of purchase or contact customer support.



Image: Visual representation of the 90-day return policy.

7.3 Customer Assistance

For any product-related questions, technical support, or warranty claims, please contact our professional customer service team:



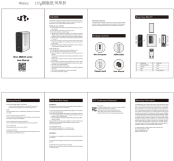


- **Email:** service@nimopc.com
- **Phone:** Refer to your product packaging or NIMO's official website for current phone support numbers.
- **Online:** Visit the official NIMO website for FAQs and additional support resources.

Our dedicated support team is available to assist you and resolve any issues promptly.



Image: Depiction of NIMO's professional customer assistance team.

Related Documents - Nimo N171

	<p>NIMO N171 Series Laptop User Manual and Safety Guide</p> <p>Comprehensive user manual for the NIMO N171 series laptop, covering product specifications, usage instructions, safety guidelines, troubleshooting, and warranty information.</p>
	<p>NIMO N175 Series Laptop User Manual and Safety Information</p> <p>Official user manual and safety guide for the NIMO N175 series laptop. Provides detailed information on product features, setup, operation, maintenance, troubleshooting, warranty, and regulatory compliance.</p>
	<p>Nimo MME2S Series Mini PC User Manual</p> <p>User manual for the Nimo MME2S series Mini PC, covering setup, operation, safety precautions, package contents, BIOS setup, FCC compliance, and warranty information.</p>
	<p>NIMO N157 Series Laptop User Manual</p> <p>User manual for the NIMO N157 series laptop, covering product schematic, instructions for use, safety guidelines, troubleshooting, warranty information, and FCC/IC compliance.</p>
	<p>NIMO N173 Series Notebook User Manual Setup, Safety & Troubleshooting Guide</p> <p>Comprehensive user manual for the NIMO N173 series notebook, covering product schematics, setup instructions, power supply, charging, cleaning, maintenance, safety guidelines, troubleshooting, and warranty information.</p>
	<p>NIMO N153 Series Laptop User Manual and Safety Guide</p> <p>This user manual provides comprehensive information for the NIMO N153 series laptop, including setup instructions, function key details, power supply and charging guidance, safety precautions, troubleshooting steps, warranty information, and FCC compliance statements.</p>