

EEW GP-SW290DC0310-IP44(US)

EEW Smart Color Changing Christmas Lights Instruction Manual

Model: GP-SW290DC0310-IP44(US)

1. INTRODUCTION

This manual provides detailed instructions for the safe and efficient use of your EEW Smart Color Changing Christmas Lights. Please read this manual thoroughly before installation and operation to ensure optimal performance and longevity of the product.



Image 1.1: Overview of the EEW Smart Color Changing Christmas Lights, including the string lights, remote control, and smartphone app interface.

2. PACKAGE CONTENTS

Verify that all items are present in the package:

- 1 x EEW Smart Color Changing String Lights (109ft, 300 LED)
- 1 x Remote Control
- 1 x UL Certified Adapter
- 1 x User Manual

3. SAFETY INFORMATION

- Ensure the power adapter is protected from water and moisture, especially during outdoor use.
- Do not attempt to modify or repair the lights or adapter. Contact customer support for assistance.
- Keep out of reach of children.
- Unplug the lights from the power source before cleaning or when not in use for extended periods.
- Use only the provided UL certified adapter.

4. SETUP GUIDE

4.1 App Installation and Bluetooth Connection

1. **Download the App:** Search for "Surplife" in the App Store (iOS) or Google Play Store (Android), or scan the QR code provided on the product packaging or quick start guide.
2. **Power On:** Plug in the EEW Smart Color Changing Christmas Lights to a power outlet.
3. **Open App:** Launch the "Surplife" app on your smartphone.
4. **Connect via Bluetooth:** The app will automatically detect nearby EEW Smart Color Changing Christmas Lights via Bluetooth. Follow the on-screen prompts to connect. Ensure your phone's Bluetooth is enabled.

4.2 Physical Installation

The lights are designed for both indoor and outdoor use. The string lights themselves are IP44 waterproof, making them resistant to splashes and rain. However, the adapter must be protected from direct water exposure.

- Carefully uncoil the string lights.
- Position the lights as desired, ensuring the adapter is in a dry, protected location.
- Secure the lights using appropriate fasteners if necessary.



99FT 300LED, Total Length 108.8FT

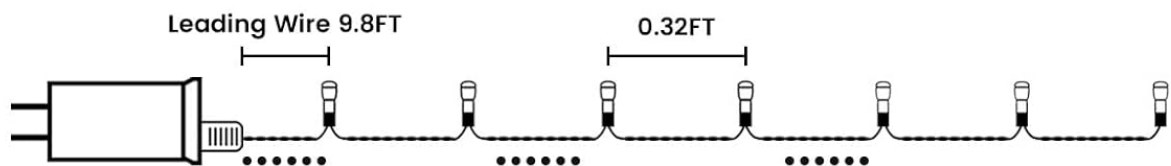


Image 4.1: Illustration of the various control methods: smartphone app, remote control, and the physical button on the adapter.

5. OPERATING INSTRUCTIONS

5.1 Remote Control Functions

The included remote control allows for basic operation of the lights:

- **ON/OFF:** Power the lights on or off.
- **Color Selection:** Choose from preset colors (Red, Green, Blue, White, etc.).
- **Mode Selection:** Cycle through various lighting modes (e.g., twinkle, fade, static).

- **Brightness Adjustment:** Increase or decrease the light intensity.
- **Timer:** Set a 4H, 6H, or 8H timer for automatic operation.

5.2 App Control Functions

The "Surplife" app provides advanced control and customization options:

- **Color Changing:** Access 16 million colors to customize your lighting.
- **Brightness & Speed Adjustment:** Precisely control the brightness and the speed of dynamic lighting effects.
- **Scene Modes:** Select from 73 vibrant built-in scene modes for various occasions (e.g., Christmas, Halloween, Party).
- **DIY Mode:** Create and save your own custom lighting effects by adjusting colors, running direction, and playback speed.
- **Timer Function:** Schedule specific on/off times for your lights, similar to an alarm clock.
- **Music Sync:** The lights can synchronize with music or ambient sounds, changing effects according to rhythm and beat.
- **Intelligent Voice Assistant:** Activate the smart assistant via voice commands to control light settings.
- **Group Control:** Control multiple sets of EEW Smart Color Changing Christmas Lights simultaneously through the app.

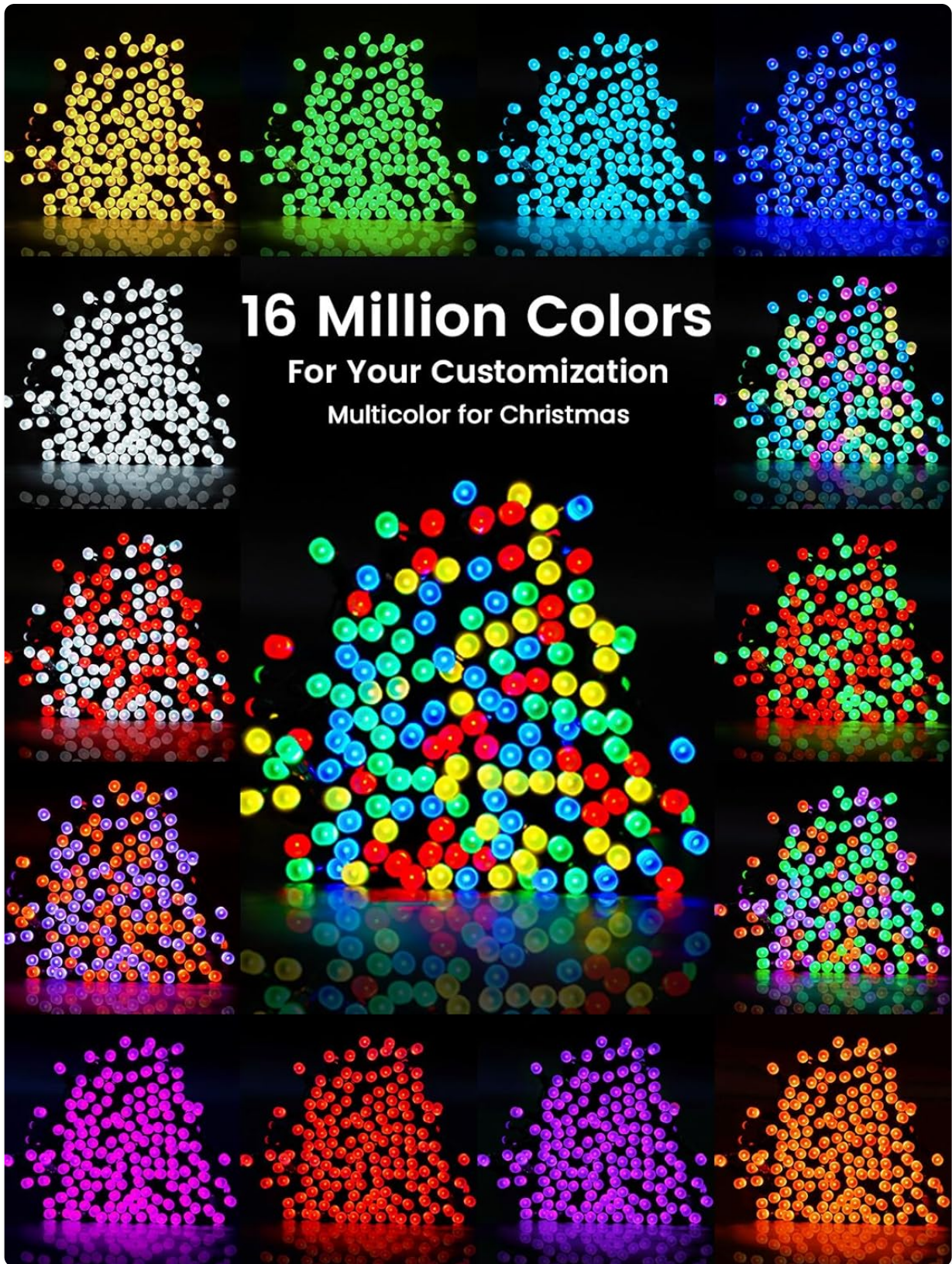


Image 5.1: Visual representation of the 16 million color options available for customization through the app.

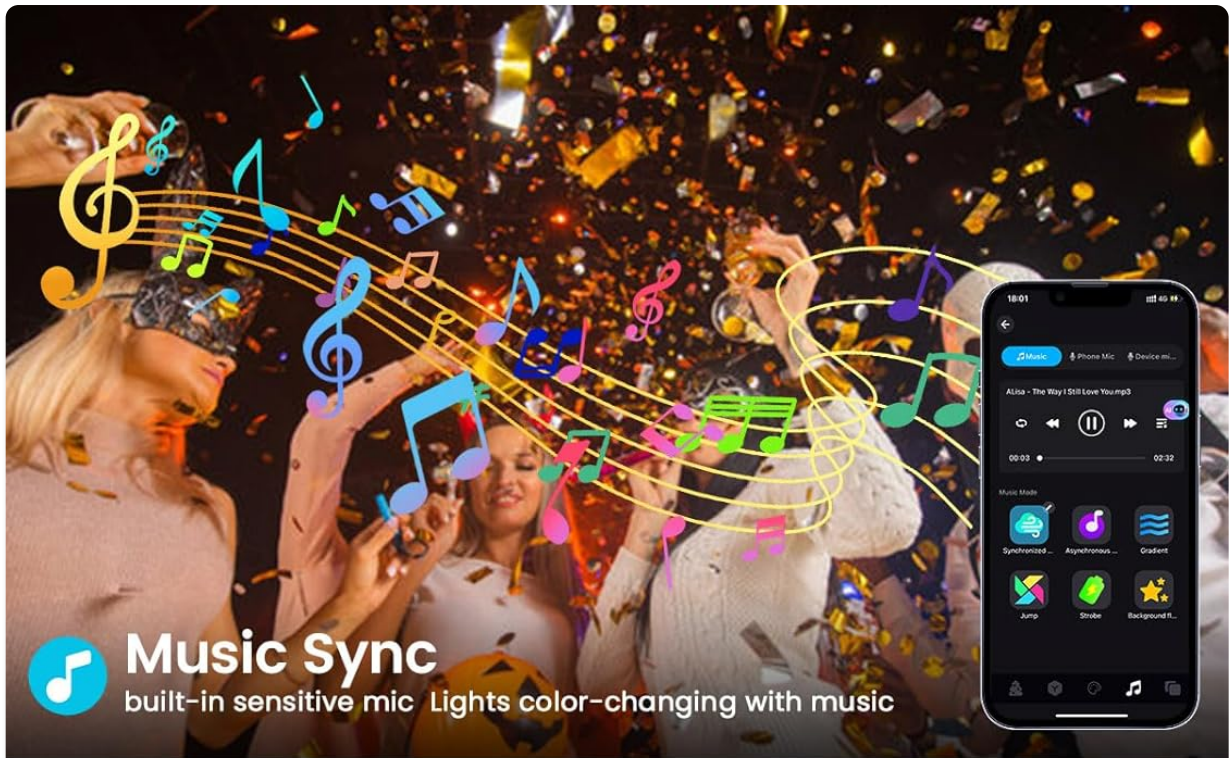


Image 5.2: Depiction of the Music Sync feature, where lights react to sound, and the Timer Function for scheduled operation.



Intelligent Voice Assistant

Trigger the smart assistant via voice command to explore more fun



Image 5.3: An example of using the Intelligent Voice Assistant to control the lights, shown with a Christmas tree display.



Image 5.4: An illustration of multiple light sets being controlled simultaneously through the app, demonstrating the group control feature on a house exterior.

6. MAINTENANCE

6.1 Waterproof Considerations

The string lights have an IP44 waterproof rating, meaning they are protected against solid objects larger than 1mm and against splashing water from any direction. This makes them suitable for outdoor use in various weather conditions like rain and snow.

Important:

- The power adapter is **not** fully waterproof and must be protected from direct exposure to water or heavy rain.
- Ensure all connections are secure and dry before plugging into a power source.



Image 6.1: Visual representation of the IP44 waterproof rating, showing the lights in rainy conditions and highlighting the need to protect the adapter from water.

6.2 Cleaning and Storage

- Before cleaning, always unplug the lights from the power source.
- Wipe the lights with a soft, dry cloth. Do not use harsh chemicals or abrasive cleaners.

- When storing, gently coil the lights to prevent tangling and damage. Store in a cool, dry place away from direct sunlight.

7. TROUBLESHOOTING

If you encounter issues with your EEW Smart Color Changing Christmas Lights, refer to the following common solutions:

Problem	Possible Cause	Solution
Lights do not turn on.	No power, loose connection, faulty adapter.	Check if the adapter is securely plugged into a working outlet. Ensure all connections are tight. Test the outlet with another device. If the issue persists, contact customer support.
Remote control not working.	Battery depleted, remote out of range, obstruction.	Replace the remote control battery. Ensure you are within the remote's operating range and there are no major obstructions. Point the remote directly at the receiver.
App cannot connect to lights.	Bluetooth off, lights not powered, app issue.	Ensure your phone's Bluetooth is enabled. Confirm the lights are powered on. Close and reopen the "Surplife" app. Restart your phone. If the problem continues, try resetting the lights by unplugging and replugging them after 10 seconds.
Lights are flickering or behaving erratically.	Unstable power, loose connection, interference.	Check power connections. Ensure the adapter is receiving stable power. Try moving the lights away from other electronic devices that might cause interference.

8. SPECIFICATIONS

Feature	Detail
Model Number	GP-SW290DC0310-IP44(US)
Brand	EEW
Color	RGB (Red, Green, Blue)
Light Source Type	LED
Number of Light Sources	300
Length	109 feet
Power Source	Corded Electric
Voltage	29 Volts
Water Resistance Level	IP44 Waterproof (lights only, adapter needs protection)

Feature	Detail
Indoor/Outdoor Usage	Indoor, Outdoor
Special Features	Color Changing, Dimmable, Timer, Music Sync, App Control, Remote Control
Material	Plastic
Item Weight	1.41 pounds
Manufacturer	NINGBO GOLDEN POWER ELECTRONIC CO., LTD

9. CUSTOMER SUPPORT

For any questions, technical assistance, or warranty inquiries regarding your EEW Smart Color Changing Christmas Lights, please contact our customer support team. We are committed to providing prompt and helpful service.

Please refer to the contact information provided on your product packaging or the official EEW website for the most up-to-date support details.