

Manuals+

[Q & A](#) | [Deep Search](#) | [Upload](#)

[manuals.plus](#) /

- › [PaiPaitek](#) /
- › [Paipaitek Dog Training Collar Receiver Replacement User Manual](#)

PaiPaitek PD520V

Paipaitek Dog Training Collar Receiver Replacement User Manual

Model: PD520V

INTRODUCTION

This manual provides comprehensive instructions for the Paipaitek Dog Training Collar Receiver Replacement, model PD520V. This device is designed to assist in humane dog training through vibration and beep modes, without the use of static shock. It is suitable for dogs weighing 5 to 150 pounds and is compatible exclusively with the Paipaitek PD520V training system. Please read this manual thoroughly before use to ensure proper operation and the safety of your pet.



Image: The Paipaitek Dog Training Collar Receiver, a black unit with a reflective strap, designed for humane training.

PRODUCT FEATURES

- **Humane Training:** Offers 10 levels of vibration and beep modes, eliminating the need for static shock.
- **Compact and Lightweight:** Weighs only 1.2 oz (34g) with dimensions of 1.8 x 1 inches (4.5 x 2.5 cm), ensuring comfort for your pet.
- **Extended Range:** Provides a 1600ft (487m) remote control distance for versatile training environments.
- **IPX7 Waterproof:** Allows the receiver to be submerged in water up to 1 meter for 30 minutes, suitable for swimming and wet conditions.
- **Long Battery Life:** Rechargeable battery offers up to 20 days of use on a single 2-hour charge, depending on frequency of use.
- **Versatile Application:** Effective for correcting various behaviors such as excessive barking, chasing, running away, and jumping.

NO SHOCK & NO PRONGS

No prongs digging into your dog's neck



Image: A comparison showing the smooth, prong-free design of the PaiPaiTek receiver versus traditional prong collars, highlighting its humane approach.

SETUP GUIDE

1. Charging the Receiver

Before first use, fully charge the receiver.

1. Locate the charging port on the receiver.
2. Connect the charging cable to the receiver and a suitable USB power adapter (not included).
3. The indicator light will show charging status (refer to LED indicator section for details). A full charge typically takes 2 hours.
4. Disconnect the charger once fully charged.

2. Attaching the Collar Strap

The receiver unit needs to be attached to a compatible collar strap.

3 Training Modes

**No shock collar more humane,
Choose the proper training mode for your dog**



Beep



Vibrate
(1-10 Levels)



Beep & Vibrate
(1-10 Levels)



Image: A four-step diagram illustrating how to thread the collar strap through the receiver unit for proper assembly.

1. Thread one end of the collar strap through the top slot of the receiver unit.
2. Loop the strap back through the buckle or adjuster.

3. Repeat for the other side of the receiver unit.
4. Ensure the receiver is securely positioned on the strap.

3. Fitting the Collar on Your Dog

Proper fit is crucial for the effectiveness and comfort of the collar.



Adjustable to fit the dog's neck

The collar is not easy to loosen

Image: The collar strap with the receiver unit, demonstrating its adjustable nature to fit various dog neck sizes securely without loosening.

- Place the receiver on your dog's neck, ensuring the unit is positioned centrally under the chin or on the side of the neck.
- Adjust the strap so it is snug but not too tight. You should be able to fit two fingers comfortably between the collar and your dog's neck.
- Trim any excess strap length if necessary, and use the provided clip or loop to secure the loose end.
- Do not leave the collar on your dog for more than 12 hours a day to prevent skin irritation.

OPERATING INSTRUCTIONS

The Paipaitek PD520V receiver operates in conjunction with a compatible remote transmitter (sold separately).



Image: The Paipaitek dog training collar receiver alongside its compatible remote transmitter, illustrating the complete training system.

1. Pairing the Receiver with the Remote (if necessary)

If your receiver is not responding to your remote, it may need to be paired. Refer to your remote's manual for specific pairing instructions. Generally, the process involves:

- Turn on the receiver.
- Press and hold the power button on the receiver until the indicator light flashes rapidly.
- Within a few seconds, activate a command (e.g., vibration or beep) on your remote.
- The receiver's light should become solid, indicating successful pairing.

2. Training Modes

The PD520V receiver supports three primary training modes:

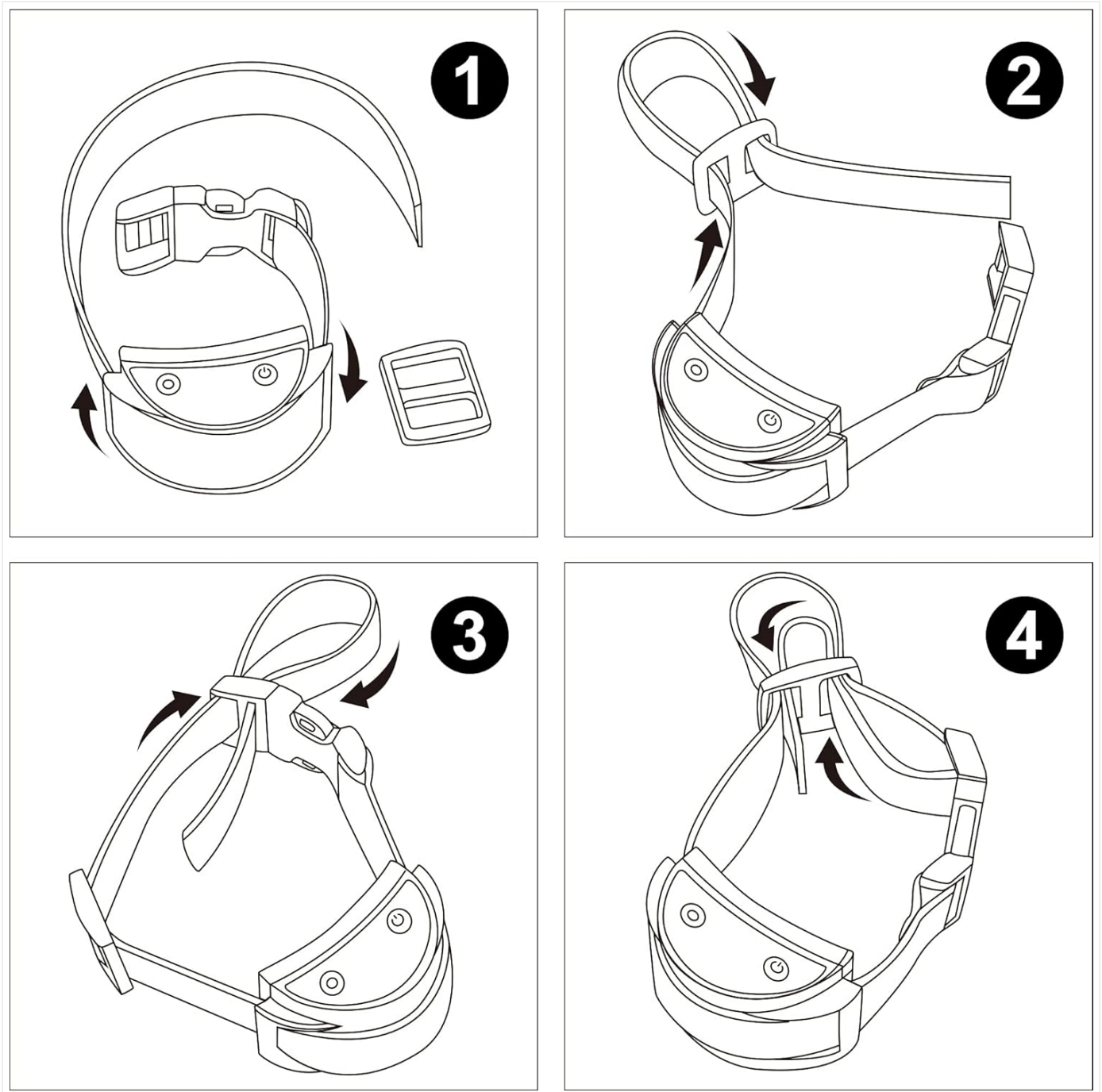


Image: An illustration showing the three available training modes: Beep, Vibrate (1-10 Levels), and Beep & Vibration (1-10 Levels), along with the remote and a dog wearing the collar.

- **Beep Mode:** Emits an audible tone. Useful for initial attention-getting or as a warning signal.
- **Vibration Mode (1-10 Levels):** Delivers a gentle vibration. The intensity can be adjusted from level 1 (mildest) to level 10 (strongest) via the remote. Start with lower levels and increase as needed.
- **Beep & Vibration Mode (1-10 Levels):** Combines an audible beep with vibration. This can be used for more pronounced cues or for dogs that respond better to a combined stimulus.

Always use the lowest effective level for training. Consistent and positive reinforcement training methods are recommended.

3. Waterproof Feature (IPX7)

The receiver is IPX7 waterproof, meaning it can withstand immersion in water up to 1 meter for 30 minutes. This allows your dog to wear it during swimming, bathing, or in rainy/snowy conditions.

IP67 WATERPROOF LEVEL



Image: A dog swimming with the Paipaitek collar, illustrating its IP67 waterproof capability for use in bathing, rain, or snow. While waterproof, it is recommended to dry the receiver thoroughly after exposure to water to prolong its lifespan.

MAINTENANCE

1. Cleaning the Receiver

Regular cleaning helps maintain the device's performance and hygiene.

- Wipe the receiver with a soft, damp cloth.
- Do not use harsh chemicals or abrasive cleaners.
- Ensure the charging port cover is securely closed before cleaning or exposing to water.

2. Battery Care

- Charge the receiver fully before long periods of inactivity.
- Recharge the battery at least once every 3 months to maintain battery health.
- Avoid exposing the receiver to extreme temperatures.

3. Skin Health

To prevent skin irritation or pressure sores on your dog's neck:

- Inspect your dog's neck daily for any signs of redness or irritation.
- Reposition the collar on your dog's neck every 1-2 hours.
- Remove the collar for several hours each day, ideally when the dog is unsupervised.
- If irritation occurs, discontinue use until the skin heals. Consult a veterinarian if irritation persists.

TROUBLESHOOTING

Problem	Possible Cause	Solution
Receiver not turning on.	Low battery; device off.	Charge the receiver fully. Press and hold the power button to turn on.
Receiver not responding to remote.	Not paired; out of range; remote battery low.	Ensure receiver is paired with the remote. Move closer to the dog. Check remote battery.
Vibration/Beep is weak or inconsistent.	Low battery; incorrect level setting.	Recharge the receiver. Adjust vibration level on the remote.
Collar causes skin irritation.	Too tight; worn for too long; poor hygiene.	Adjust fit. Remove collar periodically. Clean receiver and dog's neck regularly. Consult vet if persistent.

SPECIFICATIONS

Feature	Detail
Model Number	PD520V
Item Weight	1.2 ounces (approx. 34g)
Item Dimensions (LxWxH)	1.8 x 1 inches (receiver unit)
Waterproof Rating	IPX7
Battery Life (Receiver)	Up to 20 days (usage dependent)
Charging Time	Approx. 2 hours
Remote Range	1600 feet (approx. 487 meters)
Training Modes	Beep, Vibration (1-10 levels), Beep & Vibration (1-10 levels)
Compatible Dog Weight	5 - 150 lbs
Material	Plastic, Metal (internal components), Nylon (strap)

WARRANTY AND SUPPORT



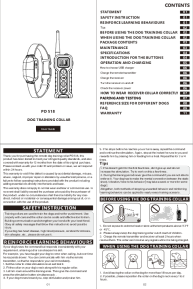



For information regarding warranty coverage, returns, or technical support, please refer to the purchase documentation or contact PaiPaitek customer service directly.

PaiPaitek Customer Service: Please visit the official PaiPaitek website or contact the seller through your purchase platform for the most up-to-date support information.



© 2025 PaiPaitek. All rights reserved.
This manual is for informational purposes only. Product specifications are subject to change without notice.

Related Documents - PD520V

	<p>PaiPaitek PD 526-TIO Dog Training Collar User Guide</p> <p>Comprehensive user guide for the PaiPaitek PD 526-TIO dog training collar, covering setup, operation, safety instructions, auto anti-barking function, maintenance, specifications, pairing, testing, and troubleshooting.</p>
	<p>PaiPaitek PD 526V Dog Training Collar User Manual</p> <p>Comprehensive user manual for the PaiPaitek PD 526V remote dog training collar. Learn about its features, specifications, how to effectively train your dog using sound and vibration modes, proper collar fitting, charging instructions, pairing procedures, troubleshooting, and safety guidelines.</p>
	<p>PD 518 Dog Training Collar User Guide</p> <p>Comprehensive user guide for the PD 518 Dog Training Collar, covering safety instructions, training techniques, operation, maintenance, specifications, and troubleshooting.</p>
	<p>PaiPaitek PD 520V Dog Training Collar: User Manual & Guide</p> <p>Learn how to effectively train your dog using the PaiPaitek PD 520V no-shock dog training collar. This user guide covers setup, operation, training tips, and troubleshooting for the PD 520V, PD 520V-1, and PD 520V-2 models.</p>
	<p>PaiPaitek PD 523-TIO Dog Training Collar User Guide</p> <p>Comprehensive user guide for the PaiPaitek PD 523-TIO Dog Training Collar, covering features, operation, safety instructions, maintenance, specifications, and troubleshooting.</p>
	<p>PaiPaitek PC 559-TIO Remote Cat Training Collar User Guide</p> <p>Comprehensive user guide for the PaiPaitek PC 559-TIO remote cat training collar, detailing its features, operation, training methods, and safety precautions. Includes information on pairing, charging, and testing the device.</p>

