



[Manuals.plus](#) /

› [TABU](#) /

› TABU 49QT (45L) Portable Car Refrigerator User Manual - Model EA45-C

TABU EA45-C

TABU 49QT (45L) Portable Car Refrigerator User Manual

Model: EA45-C

1. INTRODUCTION

Thank you for choosing the TABU 49QT (45L) Portable Car Refrigerator. This manual provides essential information for the safe and efficient operation, maintenance, and troubleshooting of your new appliance. Please read it thoroughly before use and retain it for future reference.

This portable refrigerator is designed for versatile use, offering both cooling and freezing capabilities with dual-zone temperature control. It is suitable for various applications including camping, travel, RV use, and as an extra storage solution at home.



Image 1.1: The TABU 49QT (45L) Portable Car Refrigerator in its closed state, showcasing its compact design with wheels and a handle for portability.

2. SAFETY INSTRUCTIONS

To ensure safe operation and prevent damage, please observe the following safety precautions:

- Read all instructions before operating the appliance.
- Do not operate the refrigerator if the power cord is damaged. Contact customer support for assistance.
- Ensure proper ventilation around the unit. Do not block air vents.
- Avoid placing the refrigerator in direct sunlight or near heat sources.
- Do not immerse the unit in water or expose it to heavy rain.

- Keep children away from the appliance, especially during operation.
- Disconnect power before cleaning or performing any maintenance.
- This appliance is not intended for use by persons with reduced physical, sensory, or mental capabilities unless supervised or instructed.
- The refrigerator is equipped with a 30° anti-tip design for stable operation on inclined or uneven terrain. However, avoid extreme angles to prevent damage or malfunction.

3. PRODUCT OVERVIEW

3.1 Key Features

- **Dual Zone Capacity:** Two independently adjustable temperature-controlled zones (29QT and 20QT) for simultaneous refrigeration and freezing.
- **Fast Cooling:** High-torque scroll compressor achieves -4°F (-20°C) within 15 minutes in MAX mode.
- **Low Energy Consumption:** Average power consumption of 45W.
- **Portability:** Equipped with two wheels and a retractable handle for easy transport.
- **User-Friendly Control:** Side-mounted LED control panel with child lock.
- **Quiet Operation:** Noise level below 42 dB.
- **Battery Protection System:** Prevents vehicle battery depletion.
- **Anti-Tip Design:** Maintains stable operation at maximum tilt angles of 30°.
- **Multiple Power Options:** Compatible with 12/24V DC and 110-240V AC.

3.2 Components



Image 3.1: Interior view of the refrigerator, illustrating the dual-zone design with a removable divider. One zone contains bottled beverages, and the other contains fresh fruit.

- Main Unit (Refrigerator/Freezer)
- Removable Divider (for dual-zone functionality)
- DC Power Cord (12/24V)
- AC Power Cord (110-240V)
- User Manual

4. SETUP

4.1 Unpacking

1. Carefully remove the refrigerator from its packaging.
2. Inspect the unit for any signs of damage. If damaged, do not operate and contact customer support.
3. Remove all packing materials, including any internal protective films or tapes.

4.2 Placement

- Place the refrigerator on a flat, stable surface.
- Ensure there is adequate space (at least 10 cm) around all sides for proper ventilation.
- Avoid placing the unit in direct sunlight or in areas with high ambient temperatures.
- For vehicle use, secure the refrigerator to prevent movement during transit. The anti-tip design supports up to 30° inclination.



Image 4.1: The portable refrigerator positioned in the trunk of a car, demonstrating its suitability for vehicle use and travel.

4.3 Power Connection

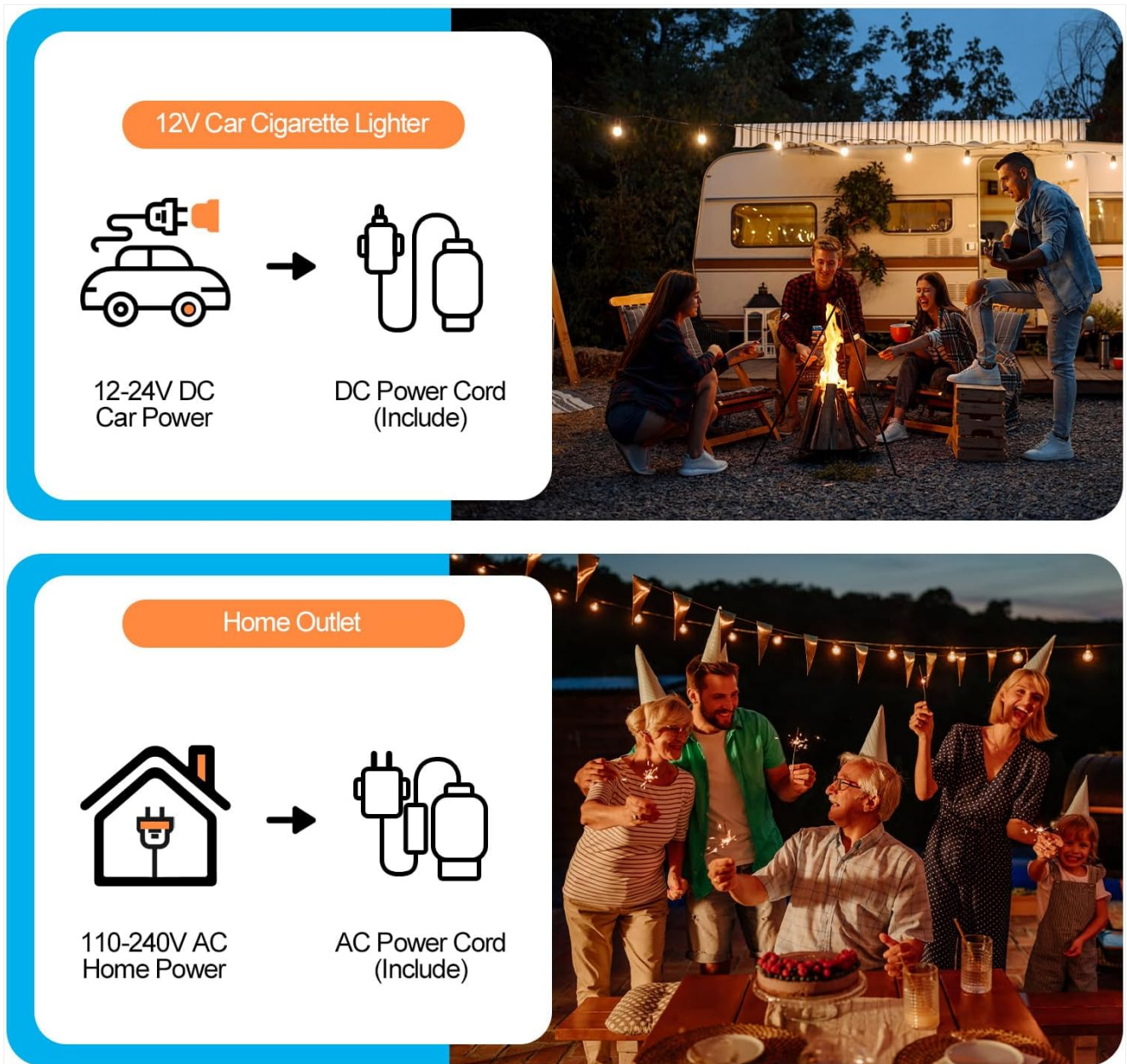


Image 4.2: A visual guide illustrating how to connect the refrigerator to a 12-24V DC car power source using the DC power cord, and to a 110-240V AC home outlet using the AC power cord.

- **DC Power (12/24V):** Connect the DC power cord to the refrigerator's DC input port and then to your vehicle's 12V or 24V cigarette lighter socket.
- **AC Power (110-240V):** Connect the AC power cord to the refrigerator's AC input port and then to a standard home wall outlet.
- Ensure the power source matches the voltage requirements of the refrigerator.

5. OPERATING INSTRUCTIONS

5.1 Control Panel

Touching Control Panel

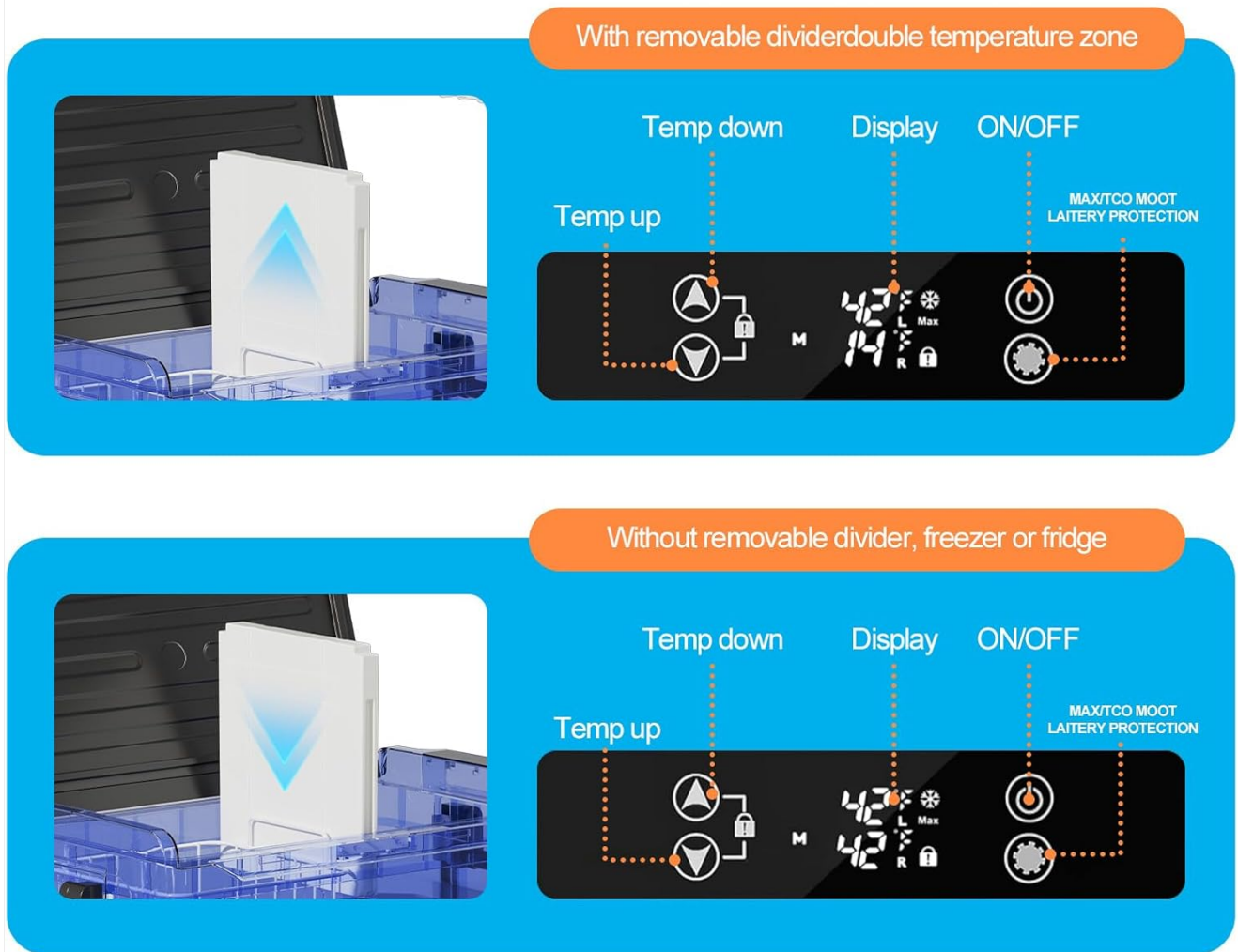


Image 5.1: Detailed diagram of the LED control panel, showing buttons for temperature adjustment (Temp up/down), display, ON/OFF, and mode selection (MAX/ECO, Battery Protection).

- **ON/OFF Button:** Press to turn the unit on or off.
- **Temp Up/Down Buttons:** Adjust the desired temperature for each zone.
- **Mode Button:** Toggle between MAX (fast cooling) and ECO (energy-saving) modes.
- **Battery Protection Button:** Adjust battery protection levels (High, Medium, Low) to prevent vehicle battery drain.
- **Child Lock:** The control panel features a child lock to prevent accidental changes to settings. Refer to the display for activation/deactivation instructions.

5.2 Temperature Setting

1. Press the ON/OFF button to power on the refrigerator.
2. Use the Temp Up and Temp Down buttons to set the desired temperature for each zone. The temperature range is -4°F to 68°F (-20°C to 20°C).
3. The display will show the current temperature and the set temperature.

5.3 Dual Zone Functionality

- The refrigerator comes with a removable divider to create two separate temperature zones.
- When the divider is in place, you can set different temperatures for the larger (29QT) and smaller (20QT)

compartments.

- If the divider is removed, the entire unit operates as a single zone, and the temperature setting will apply to the whole interior.



Image 5.2: An internal view highlighting the removable divider and a wire storage basket, demonstrating the flexibility for organizing contents and managing dual temperature zones.

6. MAINTENANCE

6.1 Cleaning

1. Always disconnect the power supply before cleaning.
2. Wipe the interior and exterior surfaces with a damp cloth and a mild detergent.
3. Do not use abrasive cleaners, harsh chemicals, or sharp objects, as these can damage the surfaces.
4. Ensure the unit is completely dry before reconnecting power.
5. The refrigerator features a bottom drain hole for easy cleaning and defrosting. Open the drain plug to allow water to escape.



Image 6.1: A visual representation of the bottom drain hole, indicating its function for convenient water drainage during cleaning or defrosting.

6.2 Defrosting

The refrigerator has a manual defrost system. If ice accumulates, turn off the unit, disconnect power, and allow the ice to melt naturally. Use the drain hole to remove water. Do not use sharp objects to remove ice.

6.3 Storage

When storing the refrigerator for an extended period, ensure it is clean, dry, and unplugged. Store it in a cool, dry place with the lid slightly ajar to prevent odors.

7. TROUBLESHOOTING

If you encounter issues with your TABU Portable Car Refrigerator, refer to the following table for common problems and solutions:

Problem	Possible Cause	Solution
Refrigerator not turning on	No power supply; Damaged power cord; Blown fuse in vehicle.	Check power connection; Try a different outlet/vehicle socket; Inspect power cord for damage; Check vehicle fuse.
Not cooling sufficiently	Temperature setting too high; Vents blocked; Excessive items inside; Door not sealed properly; Ambient temperature too high.	Lower temperature setting; Ensure clear ventilation; Do not overfill; Check door seal; Move to a cooler environment.
Unusual noise	Unit not level; Items inside rattling; Fan obstruction.	Ensure unit is on a flat surface; Secure items inside; Check for obstructions near the fan.
Error code on display	Internal malfunction.	Refer to the specific error code in the full manual (if available) or contact customer support.
Vehicle battery draining	Battery protection setting too low.	Adjust the battery protection setting to a higher level (e.g., 'High').

If the problem persists after attempting these solutions, please contact TABU customer support for further assistance.

8. SPECIFICATIONS

Feature	Detail
Model Number	EA45-C
Capacity	45 Liters (approx. 49 QT)
Fresh Food Capacity	27 Liters
Freezer Capacity	18 Liters
Temperature Range	-4°F to 68°F (-20°C to 20°C)
Power Input	DC 12V/24V, AC 110-240V

Feature	Detail
Annual Energy Consumption	45 Watts (average)
Noise Level	< 42 dB
Product Dimensions (D x W x H)	44D x 67W x 35H Centimetres (17.3"D x 26.4"W x 13.8"H)
Item Weight	16.8 Kilograms
Defrost System Type	Manual
Included Components	LED Digital Display, DC Power Cord, AC Power Cord



Image 8.1: Diagram illustrating the key dimensions of the portable refrigerator: 17.3 inches in height, 26.4 inches in width, and 13.8 inches in depth.

9. WARRANTY AND SUPPORT

For warranty information, product support, or to report any issues, please contact TABU customer service. Refer to your purchase documentation or the official TABU website for contact details.

Please have your model number (EA45-C) and proof of purchase ready when contacting support.