

Pyniro ZX-US-CLP4C

Pyniro Single Din Car Stereo (Model ZX-US-CLP4C) Instruction Manual

6.36 Inch CarPlay & Android Auto IPS Touchscreen Radio with Bluetooth and Backup Camera

1. INTRODUCTION

This manual provides detailed instructions for the installation, operation, and maintenance of your Pyniro Single Din Car Stereo, Model ZX-US-CLP4C. This unit features a 6.36-inch IPS touchscreen, wired and wireless Apple CarPlay and Android Auto compatibility, Bluetooth connectivity, FM radio, a customizable equalizer, and support for a backup camera. Please read this manual thoroughly before use to ensure proper functionality and safety.

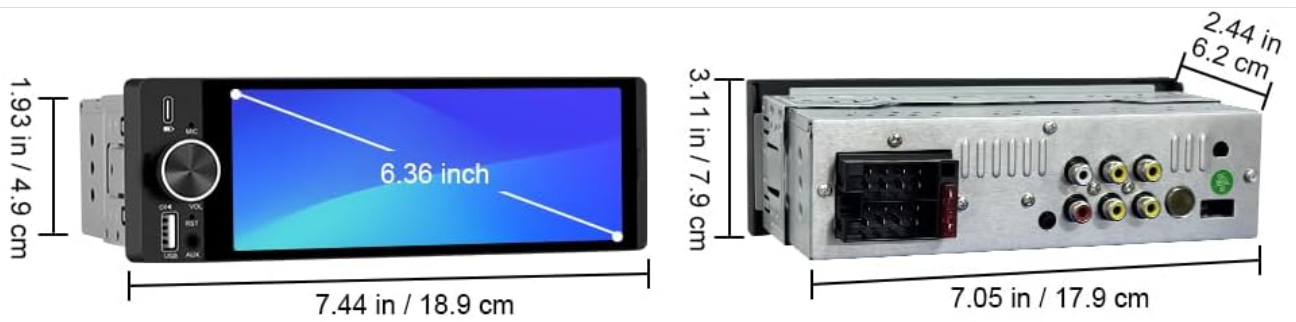
2. SAFETY INFORMATION

- Ensure all wiring is correctly connected and insulated to prevent short circuits or other hazards.
- This car stereo operates on 12-14.4V DC voltage, with a maximum current of 15A. Do not use with 24V systems (e.g., large trucks).
- Always prioritize safe driving. Do not operate the device in a way that distracts you from the road.
- Seek professional assistance for installation if you are unsure about any steps.

3. PACKAGE CONTENTS

Verify that all items are present in the package:

- 1 x Single Din Car Stereo Unit
- 1 x Screwdriver
- 1 x Power Cable
- 1 x Crowbar
- 1 x Microphone
- Screws for mounting
- 1 x Rear View Camera
- 1 x User Manual



Rear camera and cables



Power connector



Installation tools



External microphone



Installation tools



Manual

Image: Overview of the Pyniro Single Din Car Stereo unit, its dimensions, and all included accessories such as the rear camera, power connector, installation tools, external microphone, and user manual.

4. PRODUCT OVERVIEW

The Pyniro Single Din Car Stereo features a 6.36-inch IPS touchscreen for clear visuals and intuitive control. Key components include a volume knob, USB ports (Type-C for charging, USB-A for flash drives), and an AUX input.



Image: Front view of the Pyniro Single Din Car Stereo, highlighting the 6.36-inch IPS touchscreen, physical volume knob, microphone, USB ports, and AUX input.

Single Din Car Stereo with Apple Carplay Android Auto



Carplay



Android Auto



Bluetooth



DSP



Rearview Camera



Radio



Steering Wheel Controls



6,36 Inch

Image: The Pyniro Single Din Car Stereo integrated into a vehicle dashboard, illustrating its core features such as Apple CarPlay, Android Auto, Bluetooth, DSP, rearview camera support, FM radio, and steering wheel control compatibility.

5. INSTALLATION

5.1 Compatibility Check

This unit features a standard 1 DIN size. Before installation, refer to the provided dimensions and wiring diagrams to ensure compatibility with your vehicle's dashboard and electrical system. Professional installation is recommended if you are unfamiliar with car audio wiring.

5.2 Wiring Connections

Proper wiring is crucial for correct operation and to prevent damage. Use the provided wiring harness.

- **Yellow Wire (B+):** Connect to the positive terminal of the constant current battery (12V). This ensures the memory function works after the car is turned off.
- **Black Wire (GND):** Connect to the negative terminal of the battery.
- **Red Wire (ACC):** Connect to the car's ignition switch (ACC) to ensure the stereo turns on and off with the

vehicle.

- **Speaker Wires:** Connect according to the cable definition diagram (Violet, Violet/Black, Gray, Gray/Black, White, White/Black, Green, Green/Black).
- **Parking Sensor Control Wire (Pink):** Connect for parking brake detection if applicable.
- **Steering Wheel Key Control Wires (Orange, Brown):** Connect to your vehicle's steering wheel control wires (KEY1, KEY2) if supported.
- **Power Antenna Amplifier Power On (Blue):** Connect to power an external antenna amplifier if used.
- **Headlight Detection Wire (Green):** Connect to the headlight circuit for automatic display dimming.

Cable Definition Diagram

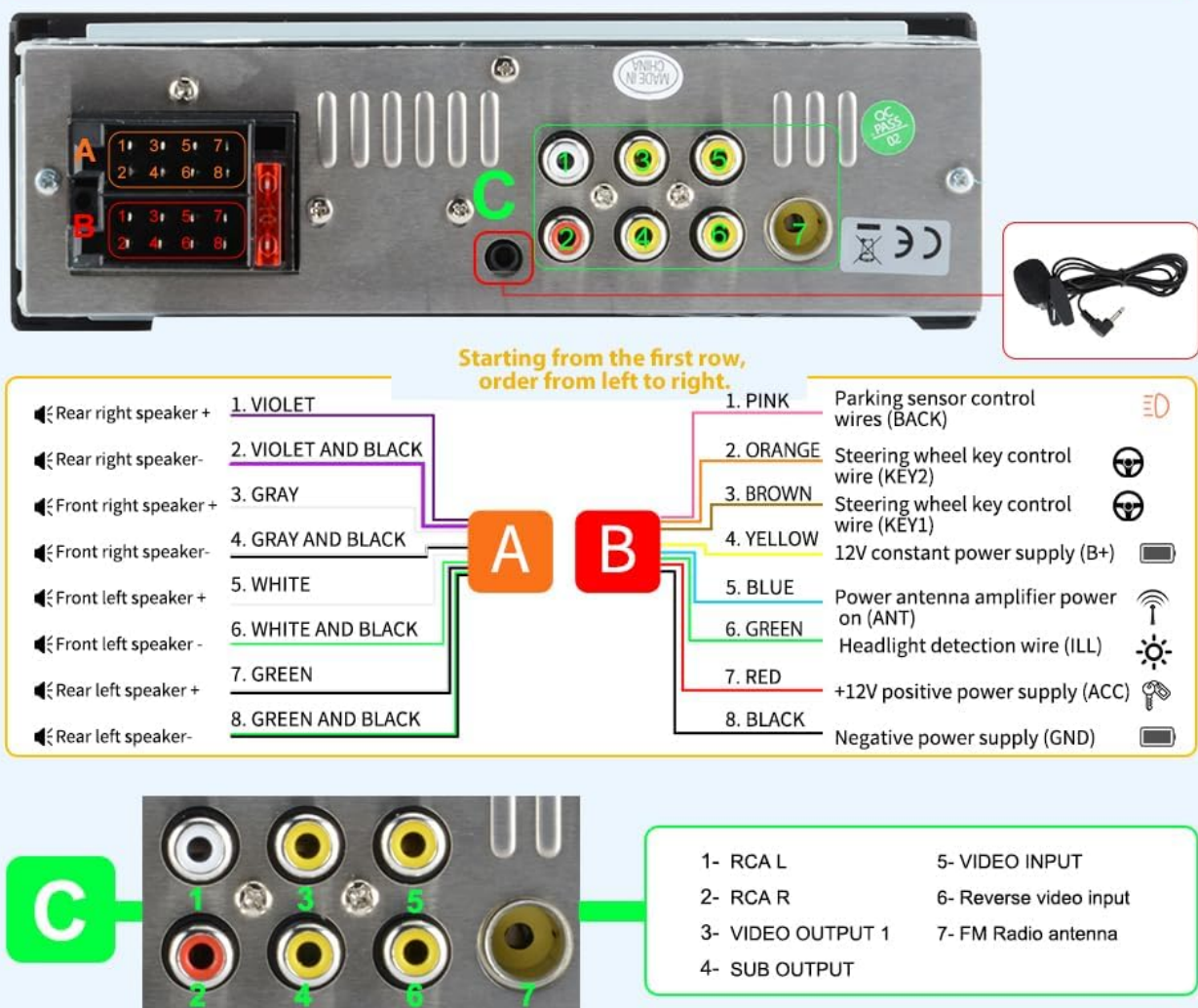


Image: Cable Definition Diagram. This diagram illustrates the wiring connections for the Pyniro car stereo, including speaker outputs, power inputs (B+, ACC, GND), and various control wires like steering wheel controls and parking sensor input.

5.3 Rear Camera Connection

The included waterproof HD backup camera enhances parking safety. Connect it as follows:

- Connect the camera's video output cable to the "Reverse Video Input" (RCA port 6) on the stereo.
- Connect the camera's red power wire to the positive wire of your car's reverse light.

- Connect the camera's black ground wire to the negative wire of your car's reverse light.
- Connect the trigger wire (usually a thin red wire extending from the RCA cable) to the "BACK" wire of the power harness. This signals the stereo to switch to the rear view when reversing.

The method to connect the rear camera

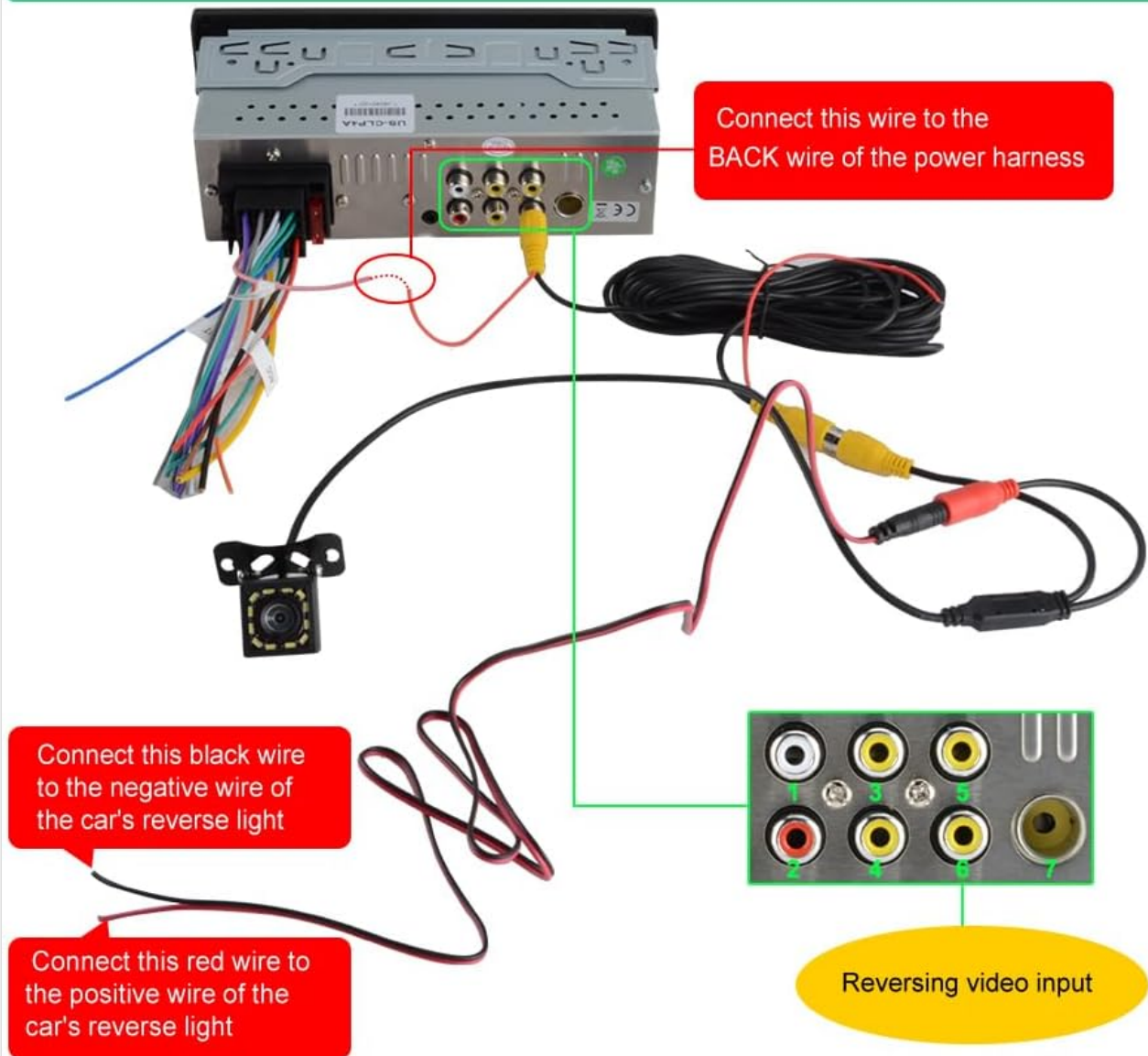


Image: Rear Camera Connection Method. This diagram details the wiring for the backup camera, showing connections to the stereo's video input and the car's reverse light circuit for automatic activation.

6. SETUP

6.1 Initial Power On

After completing all wiring, turn on your vehicle's ignition. The stereo should power on. If it does not, refer to the troubleshooting section.

6.2 Language and Time Settings

Navigate through the system settings to set your preferred language, time zone, and date format.

6.3 Bluetooth Pairing

To pair your smartphone via Bluetooth:

1. On the stereo, go to the Bluetooth menu.
2. Enable Bluetooth on your smartphone and search for available devices.
3. Select "Pyniro Car Stereo" (or similar name) from the list on your phone.
4. Confirm the pairing code if prompted.

6.4 CarPlay / Android Auto Setup

The unit supports both wired and wireless CarPlay and Android Auto.

- **Wireless Connection:** Ensure Bluetooth is paired. The system will prompt you to enable Wi-Fi for the wireless CarPlay/Android Auto connection. Follow the on-screen instructions.
- **Wired Connection:** Connect your smartphone to the stereo's USB-A port using a certified USB cable. The system should automatically detect and launch CarPlay or Android Auto.



Image: CarPlay and Android Auto support. This image shows the stereo screen with both CarPlay and Android Auto interfaces, highlighting features like voice assistant, Bluetooth, rearview camera, maps, and steering wheel controls.

7. OPERATING INSTRUCTIONS

7.1 CarPlay and Android Auto

Once connected, you can access navigation, music, calls, and messages directly on the stereo's touchscreen. Use voice commands (Siri or Google Assistant) for hands-free control.

7.2 Bluetooth Functions

After pairing, you can make and receive hands-free calls and stream high-quality audio from your smartphone. The system supports phonebook synchronization.

7.3 FM Radio

Access the FM radio function to tune into your favorite stations. The frequency range is 87.5MHz-108.0MHz.

7.4 Audio Equalizer (EQ)

Customize your audio experience using the built-in EQ. Adjust various frequency bands (e.g., 30Hz, 60Hz, 125Hz, 250Hz, 500Hz, 1KHz, 2KHz, 4KHz, 8KHz, 16KHz) to fine-tune the sound to your preference. Presets like Jazz, Classic, Rock, Pop, and Soft are available.

Bluetooth Music & Calls

After connecting to Bluetooth, you can also make calls or play music faster with the voice assistant function.



FM and EQ Equalizer function

FM: 87.5MHz-108.0MHz

You can set the sound of the EQ equalizer according to your own preference.



Image: Bluetooth Music & Calls, FM Radio, and EQ Equalizer Function. This image displays the user interfaces for Bluetooth music streaming, FM radio tuning, and the detailed graphic equalizer settings, allowing for personalized audio adjustments.

7.5 Backup Camera Display

When the vehicle is shifted into reverse, the system automatically displays the rear view from the connected camera. The camera provides clear 1080P night vision and a wide-angle view.

Supports rear view reversing camera

(NOTE: This rear view camera is included in the package, you no need to buy)



High Definition



Night Vision



Viewing Angle



WaterProof

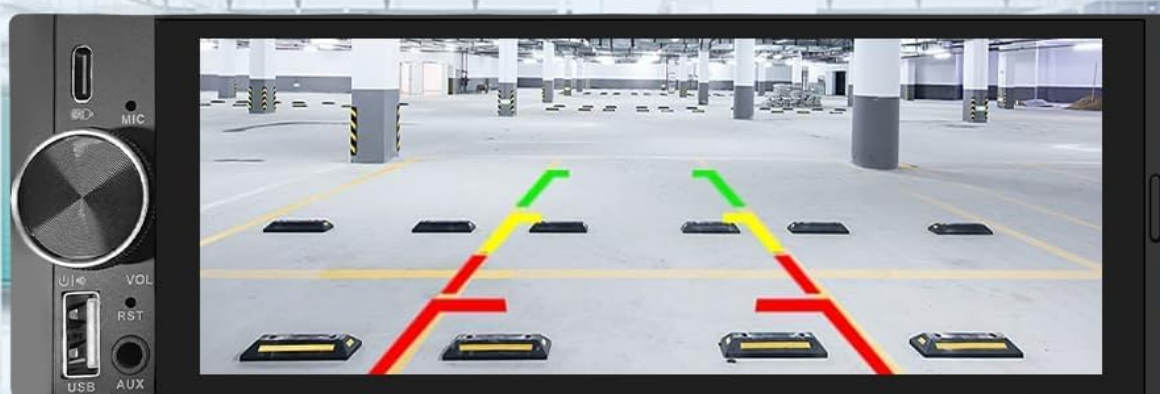


Image: Rear View Reversing Camera Support. The image shows the car stereo displaying the live feed from the backup camera, complete with parking guidelines, and highlights the camera's high definition, night vision, wide viewing angle, and waterproof capabilities.

7.6 USB Type-C Charging and USB-A Port

The Type-C port provides 2.1A fast charging for compatible devices. The USB-A port can be used for connecting flash drives to play media or for wired CarPlay/Android Auto connections.

7.7 Volume Knob

The intuitive volume knob allows for quick and easy audio adjustments, minimizing driver distraction.

8. MAINTENANCE

- Clean the touchscreen with a soft, lint-free cloth. Avoid abrasive cleaners.
- Keep the unit free from dust and moisture.
- Ensure all connections remain secure.

9. TROUBLESHOOTING

Problem	Possible Cause	Solution
Unit does not power on.	Incorrect wiring (Yellow, Black, Red wires).	Ensure Yellow (B+) is to constant 12V, Black (GND) to negative, and Red (ACC) to ignition switch. Check fuses.
Memory function does not work (settings reset).	Yellow (B+) and Red (ACC) wires are reversed or incorrectly connected.	Ensure the Yellow wire is connected to the positive terminal of the constant current battery.
Unit stays on after car is off.	Red (ACC) wire is incorrectly connected to constant power.	Ensure the Red wire is connected to the ACC (car key fob) for proper power management.
No sound or poor sound quality.	Incorrect speaker wiring; EQ settings.	Verify speaker connections. Adjust EQ settings.
CarPlay/Android Auto not connecting.	Bluetooth/Wi-Fi issues; faulty USB cable; phone compatibility.	Ensure Bluetooth is on and paired. For wireless, check Wi-Fi. For wired, use a certified USB cable. Restart phone and stereo.
Backup camera not displaying.	Incorrect camera wiring; faulty camera.	Check video input and trigger wire connections. Ensure camera is receiving power.

10. SPECIFICATIONS

- **Model Number:** ZX-US-CLP4C
- **Screen Size:** 6.36 inches
- **Screen Type:** IPS Touchscreen
- **Compatibility:** Apple CarPlay (Wired & Wireless), Android Auto (Wired & Wireless)
- **Connectivity:** Bluetooth, RCA, Wi-Fi, USB Type-C (Charging), USB-A (Data/Charging), AUX Input
- **Controller Type:** Touch Screen, Steering Wheel Controls (SWC), Physical Buttons
- **Audio Output Mode:** Stereo
- **Power Supply:** 12-14.4V DC, Max 15A
- **Item Weight:** 1.7 pounds (0.77 Kilograms)
- **Package Dimensions:** 8.03 x 5.16 x 4.37 inches
- **Included Camera:** Waterproof HD Backup Camera (1080P Night Vision)

11. WARRANTY AND SUPPORT

Your Pyniro Single Din Car Stereo comes with a**2-Year Warranty**. This warranty covers component repair or replacement for valid cases.

For technical assistance, troubleshooting, or warranty claims, please contact our dedicated support team:






- **Email Support:** radio-servicio@hotmail.com
- **Online Platform:** Refer to the official Pyniro website for additional resources and online support.

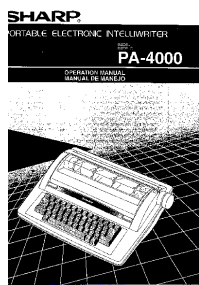
Our 24/7 support team is available to assist you with any inquiries.



© 2025 Pyniro. All rights reserved.

Related Documents - ZX-US-CLP4C

	<p>Skymen Ultrasonic Cleaner Instruction Manual and Specifications</p> <p>Comprehensive instruction manual, operation steps, maintenance, troubleshooting, and product specifications for Skymen ultrasonic cleaners, including models ZX-008, ZX-009, ZX-010, ZX-S, ZX-PLUS, ZX-T, ZX-ST, and ZX-MECHANICAL series.</p>
	<p>Carlo Milano Extensible Stair Safety Gate (85cm High) - User Manual & Installation Guide</p> <p>Comprehensive user manual and installation guide for the Carlo Milano Extensible Stair Safety Gate (85cm high). Covers technical specifications, product variants (ZX-6830 to ZX-6841), scope of delivery, optional accessories, assembly instructions, troubleshooting, and safety guidelines. Features detailed steps for mounting and usage.</p>
	<p>Levitating Bluetooth Speaker User Manual</p> <p>User manual for the Levitating Bluetooth Speaker by Zhaoqing Zhixuan Technology Co., LTD. Includes operating instructions, product list, and important safety information.</p>
	<p>ZX and ZX2 Refurbishment Guide for Zumtobel Lighting Systems</p> <p>A guide on how to refurbish Zumtobel ZX and ZX2 continuous-row lighting systems without altering existing infrastructure. Details history, trunking types, and refurbishment options for ZX C, ZX2 C, ZX MIREL, ZX2 MIREL, ZX C LINE, and ZX2 C LINE luminaires.</p>
	<p>revolt Magnetische Gaming-Powerbank PB-810.ips – 10000mAh Qi/MagSafe USB-C PD Ladegerät & Konsole</p> <p>Bedienungsanleitung für die revolt Magnetische Gaming-Powerbank PB-810.ips. Erfahren Sie mehr über technische Daten, Funktionen, Laden, Gaming und Sicherheitshinweise für dieses 10000mAh Qi/MagSafe USB-C PD Ladegerät.</p>



[SHARP PA-4000 Portable Electronic Intelliwriter Operation Manual](#)

Comprehensive operation manual for the SHARP PA-4000 Portable Electronic Intelliwriter, covering setup, features, troubleshooting, and specifications.