

[manuals.plus](#) /

› [SOOMFON](#) /

› [SOOMFON Stream Controller SE User Manual](#)

SOOMFON CN002-BN1

SOOMFON Stream Controller SE User Manual

Model: CN002-BN1

1. INTRODUCTION

The SOOMFON Stream Controller SE is a versatile control deck designed for content creators, streamers, and gamers. It features 6 customizable LCD macro keys, 3 changeover buttons, and 3 knobs, providing tactile control and visual feedback for various applications. This manual provides comprehensive instructions for setting up, operating, and maintaining your Stream Controller SE.



Image: The SOOMFON Stream Controller SE, a black device with six square LCD keys and three rotary knobs, designed for stream control.

2. WHAT'S IN THE BOX

Upon unboxing your SOOMFON Stream Controller SE, please verify that all the following items are included:

- Stream Controller SE x1
- USB 2.0 Type-A to Type-C Cable x1
- User Manual x1
- Removable Adhesive x1



Packing List

Stream Controller SE ×1

USB 2.0 Type-A to Type-C Cable ×1

User Manual ×1

Removable Adhesive ×1



Image: The packaging contents of the Stream Controller SE, including the device, USB-C cable, user manual, and removable adhesive.

3. SETUP GUIDE

3.1 Connecting the Device

1. Connect the provided USB-C cable to the Stream Controller SE.
2. Connect the other end of the USB-A cable to an available USB port on your PC or Mac.
3. The device is compatible with Windows 10 (64-bit or higher) and MacOS Catalina 10.15 (or higher).

3.2 Software Installation

The SOOMFON Stream Controller SE requires dedicated software for full functionality and customization. The software is designed for easy installation and operation.

- Download the latest software from the official SOOMFON website (refer to the included user manual for the specific URL).
- Follow the on-screen instructions to complete the installation.
- Once installed, launch the software to begin customizing your Stream Controller SE.

3.3 Using the Removable Stand

The Stream Controller SE comes with a removable 40° stand, allowing you to adjust the viewing angle for optimal comfort and visibility. You can also use the included removable adhesive to secure the device to your desktop, preventing slippage even without the stand.



Removable Stand

45° detachable stand for effortless key pressing and clear visibility. Removable adhesive keeps it steady, no wobble, no trace.



Image: The Stream Controller SE shown with its removable 40-degree stand, illustrating how it can be positioned for use, and a separate image showing the removable adhesive being applied to a surface.

4. OPERATION

4.1 Customizable LCD Keys

The Stream Controller SE features 6 fully customizable LCD buttons. These buttons provide tactile control and visual feedback, allowing you to assign and trigger various actions with a single press. You can customize the icons displayed on each key through the software.

4.2 Changeover Buttons and Knobs

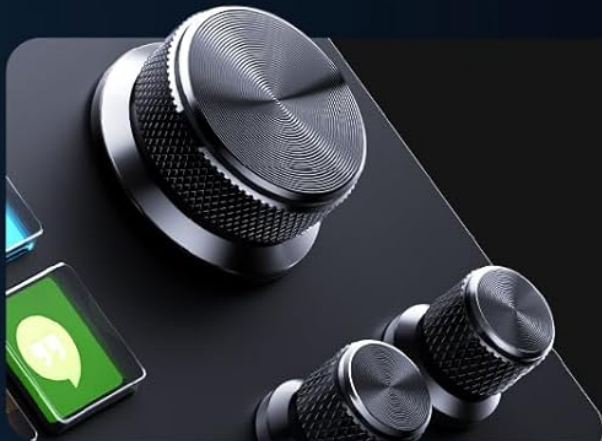
In addition to the LCD keys, the device includes 3 changeover buttons and 3 rotatable knobs:

- **Changeover Buttons:** These buttons can be configured to switch between different pages or profiles of key assignments (e.g., previous page, next page, home page in a default scene).
- **Rotatable Knobs:** The knobs allow for precise control over settings such as volume, brightness, hotkeys, and mouse controls. Their functions are fully customizable within the software.



Triple Keys, Infinite Control

LCD Keyboards, Flip-Page Button, Knobs – One device for More Needs.



Adjust

Turn the dial to adjust volume, brightness, customize hotkeys, and mouse controls.

Access

Press the button to switch the product between the work, game and study scenes you set.



Activate

Customize the actions you want, from text paste to software control.

Image: An illustration detailing the functions of the Stream Controller SE's components: knobs for adjustment (volume, brightness), three round buttons for access (switching scenes), and LCD keys for activation (custom actions).

4.3 Multi-Step Actions

One of the powerful features of the Stream Controller SE is its ability to assign multiple actions to a single button. This

allows you to execute complex sequences of commands with just one tap, making it an efficient multitasking tool for various workflows.



Multi-Step in One Tap

Assign multiple actions in one button, making it a powerful multitasking tool.



Image: A visual representation of the "Multi-Step in One Tap" feature, showing how a single button press can trigger a sequence of four different actions or applications.

4.4 Wide Compatibility and Plugins

The Stream Controller SE offers integrated support for a wide range of leading software and platforms, including OBS Studio, Twitch, YouTube, Discord, Spotify, and Voicemod. It also features an extensive plugins marketplace, providing configuration files, icons, and applications that can be customized for various scenarios and functions.



**OBS, Twitch, YouTube and 100+ plugins
with more added regularly.**



Image: A graphic illustrating the wide range of compatible applications and plugins for the Stream Controller SE, including logos for OBS, Twitch, YouTube, Spotify, Discord, and many others.

4.5 Customizable Key Icons

Personalize your Stream Controller SE by customizing the icons displayed on each LCD key. This allows you to create as many keyboard layouts as you like, tailoring the device to your specific needs and preferences for different tasks or applications.



Customizable Key Icons

Customize as many keyboard layouts as you like.



Image: The Stream Controller SE on a desk setup, with three examples below showing different customizable key icon layouts on the device's LCD keys.

4.6 Application Scenarios

The SOOMFON Stream Controller SE is designed for a variety of applications, enhancing efficiency and control in

different professional and creative fields:

- **Live Streaming:** Manage scenes, audio, and overlays seamlessly.
- **Game Programming:** Streamline development workflows with custom macros.
- **Media Editing:** Accelerate video and audio editing tasks with quick access to tools.



Wide Application

Stream Controller SE, the Multi-Domain Master



Live Streaming



Game Programming



Media Editing

Image: A collage showing the Stream Controller SE being used in various professional settings: live streaming, game programming, and media editing.

5. MAINTENANCE

To ensure the longevity and optimal performance of your SOOMFON Stream Controller SE, follow these maintenance guidelines:

- **Cleaning:** Use a soft, dry, lint-free cloth to clean the device. For stubborn marks, slightly dampen the cloth with water. Avoid using harsh chemicals, abrasive cleaners, or solvents.
- **Storage:** Store the device in a cool, dry place away from direct sunlight and extreme temperatures.
- **Handling:** Avoid dropping the device or subjecting it to strong impacts. Do not attempt to disassemble the unit, as this will void the warranty.

6. TROUBLESHOOTING

This section addresses common issues you might encounter with your Stream Controller SE.

Common Issues and Solutions:

- **Device Not Recognized:**
 - Ensure the USB-C cable is securely connected to both the device and your computer.
 - Try connecting to a different USB port on your computer.
 - Restart your computer.
 - Verify that the latest software and drivers are installed.
- **Keys Not Responding:**
 - Check the software to ensure that actions are correctly assigned to the keys.
 - Restart the Stream Controller SE software.
 - Ensure no other conflicting software is running.
- **Spotify Plugin Not Working:**
 - Please note that the Spotify plugin feature requires a Spotify Premium user account. Ensure your account is active and has Premium status.

If you encounter any issues during setup or use that are not covered here, please do not hesitate to contact our customer support team for assistance.

7. SPECIFICATIONS

Feature	Detail
Model Name	Stream Controller
Item Model Number	CN002-BN1
Brand	SOOMFON
Item Weight	10.8 ounces

Package Dimensions	6.26 x 5.75 x 2.24 inches
Color Name	Black
Compatible Devices	Laptop, PC
Connector Type	USB-C
Hardware Interface	USB
Supported Software	OBS Studio
Number of Keyboard Keys	6 (LCD Macro Keys)
Hardware Platform	PC/Mac
Special Feature	6 Macro Keys
Connectivity Technology	USB-C

8. WARRANTY AND SUPPORT



SOOMFON stands behind the quality of its products. The Stream Controller SE comes with **a2-year product guarantee**. For any inquiries, technical assistance, or warranty claims, please contact our customer support team. Our team is available 24/7 to assist you with anything you need, ensuring a prompt response within 24 hours. You can find contact information on the official SOOMFON website or in the included user manual.



© 2025 SOOMFON. All rights reserved.

Related Documents - CN002-BN1

	<p>SOOMFON Stream Controller SE CN002 Quick Start Guide - Setup and Usage</p> <p>Get started quickly with the SOOMFON Stream Controller SE (Model CN002). This guide provides essential information on setup, software installation, and basic operation for streamers, including specifications and warranty details.</p>
	<p>Soomfon SF-BT013 Wireless Audio Streaming Box: User Manual & Guide</p> <p>Comprehensive user manual for the Soomfon SF-BT013 Audio Streaming Box, a versatile Bluetooth transmitter and receiver for home appliances. Learn how to connect, use TX/RX/Bypass modes, troubleshoot issues, and understand FCC compliance.</p>
	<p>SOOMFON SF-BT013 Audio Streaming Box User Manual - Wireless Transmitter & Receiver</p> <p>Comprehensive user manual for the SOOMFON SF-BT013 Audio Streaming Box, a 2-in-1 Bluetooth transmitter and receiver. Learn how to set up and use its RX, TX, and Bypass modes for seamless wireless audio.</p>
	<p>Stream Controller Quick Start Guide</p> <p>A concise guide to setting up and using the Stream Controller.</p>

	<p>SOOMFON BT17 Audio Streaming Box User Manual</p> <p>User manual for the SOOMFON BT17 Audio Streaming Box, a 3-in-1 Bluetooth 5.0 audio adapter with LCD display, supporting Optical, AUX, and RCA connections, and bypass mode.</p>
	<p>SOOMFON ALDX Bluetooth Receiver B9011 User Manual and Specifications</p> <p>Detailed specifications and user information for the SOOMFON ALDX Bluetooth Receiver, model B9011. Includes product dimensions, printing details, material, and general tolerances.</p>