



[Manuals.plus](#) /

› [Globlazer](#) /

› [Globlazer Extra Large Cat Tree Tower S74 User Manual](#)

Globlazer S74

Globlazer Extra Large Cat Tree Tower S74 User Manual

Model: S74 | Brand: Globlazer

[Introduction](#) [Components](#) [Assembly](#) [Features](#) [Safety & Usage](#) [Maintenance](#) [Specifications](#) [Warranty & Support](#)

1. INTRODUCTION

Thank you for choosing the Globlazer Extra Large Cat Tree Tower S74. This manual provides essential information for the safe assembly, operation, and maintenance of your cat tree. Please read it thoroughly before assembly and retain it for future reference.



Figure 1: The Globlazer Extra Large Cat Tree Tower S74, a multi-level structure designed for large cats.

2. COMPONENTS LIST

Before beginning assembly, please verify that all components listed below are present and undamaged. Refer to the assembly diagram for visual identification of parts.



Figure 2: Exploded view of the cat tree components, showing all parts required for assembly.

If any parts are missing or damaged, please contact customer support immediately.

3. ASSEMBLY INSTRUCTIONS

Follow these steps carefully to assemble your Globlazer Cat Tree Tower. A detailed assembly guide and all necessary tools are included with your product.

1. **Unpack all components:** Lay out all parts on a clean, flat surface and compare them with the components list.
2. **Attach base posts:** Secure the initial posts (P1, P2) to the base plate (A) using the provided screws.
3. **Build lower levels:** Connect platforms (B) and condos (C, E) using appropriate posts (P3, P4, P5) and screws. Ensure all connections are tight.
4. **Install scratching posts:** Attach sisal-covered posts (P6, P7, P8, P9, P10, P11, P12) to designated areas.
5. **Add baskets and top perch:** Secure the hanging baskets (D) and the enlarged top perch (G) to the upper structure.
6. **Attach anti-tip strap:** For enhanced stability, secure the anti-tip strap (W4) to a wall stud using the provided hardware. This is crucial for preventing tipping, especially with active or multiple cats.
7. **Final check:** Ensure all screws are tightened and the structure is stable before allowing pets to use it.

Your browser does not support the video tag.

Video 1: Official assembly guide for the Globlazer S74 Cat Tree Tower, demonstrating step-by-step construction.

Two Spacious Condos

Wide openings for airflow and viewing, removable pads for easy comfort.



Figure 4: Close-up view of the two spacious cat condos, highlighting their wide openings and removable, washable cushions for comfort and ventilation.



18.8"×18.8"(48cm×48cm)

Enlarged Top Perch

Extra-large platform allows cats to stretch freely, cushioned edges for added safety and coziness.



Figure 5: The enlarged top perch, providing a comfortable and secure elevated resting spot for cats.

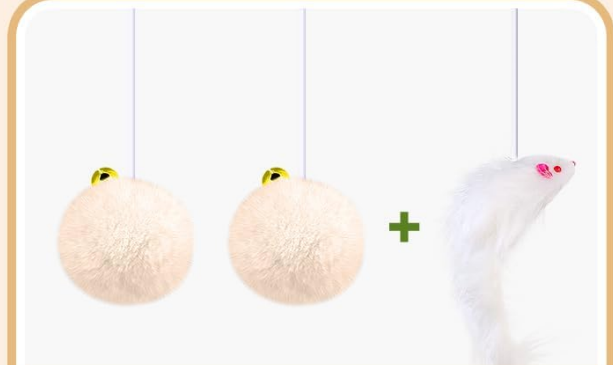
More Comfort and Exploration

Designed for your cat's rest, play, and scratch needs.

2 Dual-Ear Hanging Baskets



5 Sisal Posts



2 Dangling Balls

Figure 6: Overview of the interactive elements, including dual-ear hanging baskets, sisal scratching posts, and dangling balls for engaging play.

5. SAFETY & USAGE GUIDELINES

- Always ensure the cat tree is placed on a flat, stable surface.
- Utilize the anti-tip strap by securing it to a wall stud to prevent accidental tipping, especially if you have multiple or very active cats.
- Regularly inspect all screws and connections to ensure they remain tight. Tighten any loose screws immediately.
- Do not allow children to climb on the cat tree.
- Periodically check for any wear and tear on the sisal posts or plush fabric. Replace damaged parts if necessary.
- This product is designed for indoor use only.

Stable Play, Safe Day

Featuring a large base and anti-tip straps for a stable, shake-free adventure for your cat!

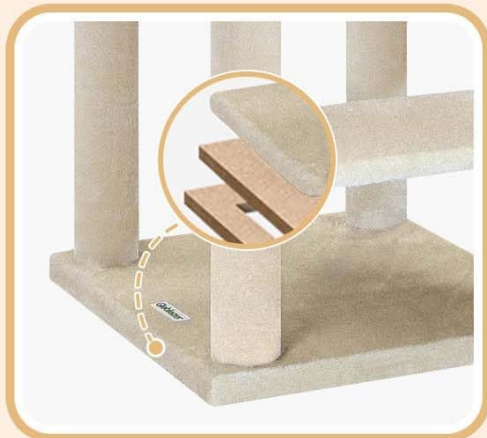


Figure 7: Illustration of the reinforced base and the anti-tip strap mechanism, emphasizing the importance of stability for cat safety.

6. MAINTENANCE

Proper maintenance will extend the life of your cat tree and ensure a hygienic environment for your pets.

- **Cleaning:** Use a vacuum cleaner with a brush attachment to remove loose fur and debris from the plush surfaces. Spot clean any soiled areas with a mild pet-safe cleaner and a damp cloth. Allow to air dry completely.
- **Cushion Care:** The padded linings in the condos are removable and washable. Follow care instructions on the label for best results.
- **Screw Firmness:** Check the firmness of all screws at least once a month. Tighten as needed to maintain structural integrity.
- **Sisal Posts:** While sisal is durable, it will fray over time. Monitor the condition of the scratching posts and consider replacing them if they become excessively worn.



Figure 8: A vacuum cleaner with a brush attachment being used to clean the plush fabric of the cat tree, demonstrating routine maintenance.

7. TROUBLESHOOTING

Problem	Possible Cause	Solution
Cat tree feels wobbly.	Loose screws; uneven floor; anti-tip strap not installed or improperly secured.	Tighten all screws. Ensure the tree is on a level surface. Install or properly secure the anti-tip strap to a wall stud.
Cats are not using the scratching posts.	Preference for other surfaces; sisal not appealing.	Encourage use by sprinkling catnip on the posts. Demonstrate scratching by gently guiding your cat's paws. Ensure posts are stable.
Plush fabric is shedding excessively.	New product shedding; normal wear and tear.	Initial shedding is normal. Regularly vacuum the tree to remove loose fibers.

8. SPECIFICATIONS

- **Model Number:** S74
- **Product Dimensions:** 50L x 48W x 188H Centimetres (19.6L x 18.9W x 74H inches)
- **Item Weight:** 19.8 Kilograms (43.65 lbs)
- **Material:** Engineered Wood, Plush, Sisal
- **Color:** Beige
- **Number of Levels:** 5
- **Mounting Type:** Floor Mount (with optional wall anchor)
- **Breed Recommendation:** All Breed Sizes
- **Specific Uses:** Climbing, Jumping, Scratching, Resting
- **Recommended Use:** Indoor
- **Manufacturer:** Globlazer
- **Country of Origin:** China

9. WARRANTY & SUPPORT

Globlazer products are manufactured with quality and customer satisfaction in mind. For any questions, concerns, or warranty claims regarding your S74 Cat Tree Tower, please contact Globlazer customer support directly through the retailer's platform or the official Globlazer website. Please have your purchase receipt and model number (S74) available when contacting support.