



[Manuals.plus](#) /

> [ibreo](#) /

> ibreo Cordless Shiatsu Neck and Back Massager (Model Neck S) User Manual

ibreo Neck S

ibreo Cordless Shiatsu Neck and Back Massager (Model Neck S) User Manual

Model: Neck S | Brand: ibreo

1. INTRODUCTION

Thank you for choosing the ibreo Cordless Shiatsu Neck and Back Massager. This manual provides essential information for the safe and effective use of your device. Please read it thoroughly before operation and retain it for future reference.



Image: The ibreo Cordless Shiatsu Neck and Back Massager shown both as a standalone product and being worn by a user for neck and shoulder massage.

2. SAFETY INFORMATION

Important Safety Instructions:

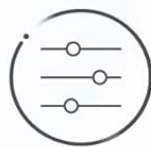
- Do not use on broken skin.
- Avoid using on the spine or neck for extended periods.
- Ensure the device is used in a safe environment to prevent accidents.
- Consult a physician before use if you have any medical conditions, are pregnant, or have a pacemaker.
- Keep out of reach of children.
- Do not immerse the device in water or use it in excessively humid environments.

3. PRODUCT FEATURES

- **3 Massage Modes & Real-Hand Spa:** Features Kneading, Master, and Scraping modes with 3D hand-shaped massage nodes for targeted, professional-level massage.
- **Adjustable Wearable Design:** Offers 2 flexible wearing styles with adjustable back straps and hand-pull handles for hands-free use or manual pressure adjustment.
- **Memory Function & Voice Prompt:** Saves last massage settings (mode, intensity, temperature) and provides voice guidance for adjustments.
- **Large Capacity Battery:** Equipped with a 2500mAh battery, providing up to 12 cordless 10-minute massage sessions per charge.
- **Rapid Heating:** Two temperature settings (104°F and 113°F) for effective deep tissue pain relief and tension easing.



3 Massage Modes



2 Massage Intensity

**Enjoy a Real Massage
and Free Your Hands**

Image: A woman using the ibreo massager, illustrating the three massage modes and two intensity levels.

Smoothing Heating

Low Heating  104°F

High Heating  113°F



Image: A close-up view of the ibreo massager's heating elements, indicating low (104°F) and high (113°F) temperature settings.

4. PRODUCT COMPONENTS

Familiarize yourself with the main parts of your ibreo massager:

- **Main Massager Unit:** Contains the massage nodes and heating elements.
- **Control Panel:** Located on the strap, features buttons for power, mode, intensity, and heat.
- **Adjustable Straps:** For securing the massager around your body.
- **Hand-Pull Handles:** For applying additional pressure during massage.

- **USB-C Charging Port:** For recharging the internal battery.

Control Panel

Intensity Control

Heating Control

Massage Mode Control

Power Switch



Image: A detailed view of the control panel on the ibreo massager, showing buttons for intensity, heating, massage mode, and power.

5. SETUP

1. **Charge the Device:** Connect the massager to a power source using the provided USB-C charging cable. Ensure the battery is fully charged before first use. The charging indicator light will show charging status.
2. **Positioning:** Place the massager around your neck and shoulders. Adjust the back straps for a comfortable and secure fit. Alternatively, use the hand-pull handles to hold the massager in place and apply desired pressure.

Back-Buckle



Versatile Wearing Options for Different Needs

Hand-Held



6. OPERATING INSTRUCTIONS

1. **Power On:** Press and hold the Power button () on the control panel to turn on the massager. A voice prompt will confirm activation.
2. **Select Massage Mode:** Press the Mode button () to cycle through the three available massage modes: Kneading, Master, and Scraping. The voice prompt will announce the selected mode.
3. **Adjust Intensity:** Press the Intensity button (↑↓) to switch between the two intensity levels. The voice prompt will confirm the intensity change.
4. **Activate Heat Function:** Press the Heat button () to turn on the heating function. Press again to cycle between 104°F and 113°F, or to turn off the heat. The voice prompt will indicate the heat setting.
5. **Smart Memory Function:** The device will automatically recall your last used settings (mode, intensity, temperature) when powered on, providing a personalized experience.
6. **Recommended Usage:** For optimal results and safety, use the massager for up to 10 minutes per session. The device may have an automatic shut-off feature after 10 minutes.
7. **Power Off:** Press and hold the Power button () to turn off the massager when finished.

Smart Memory–Auto- Recall Your Favorite Mode

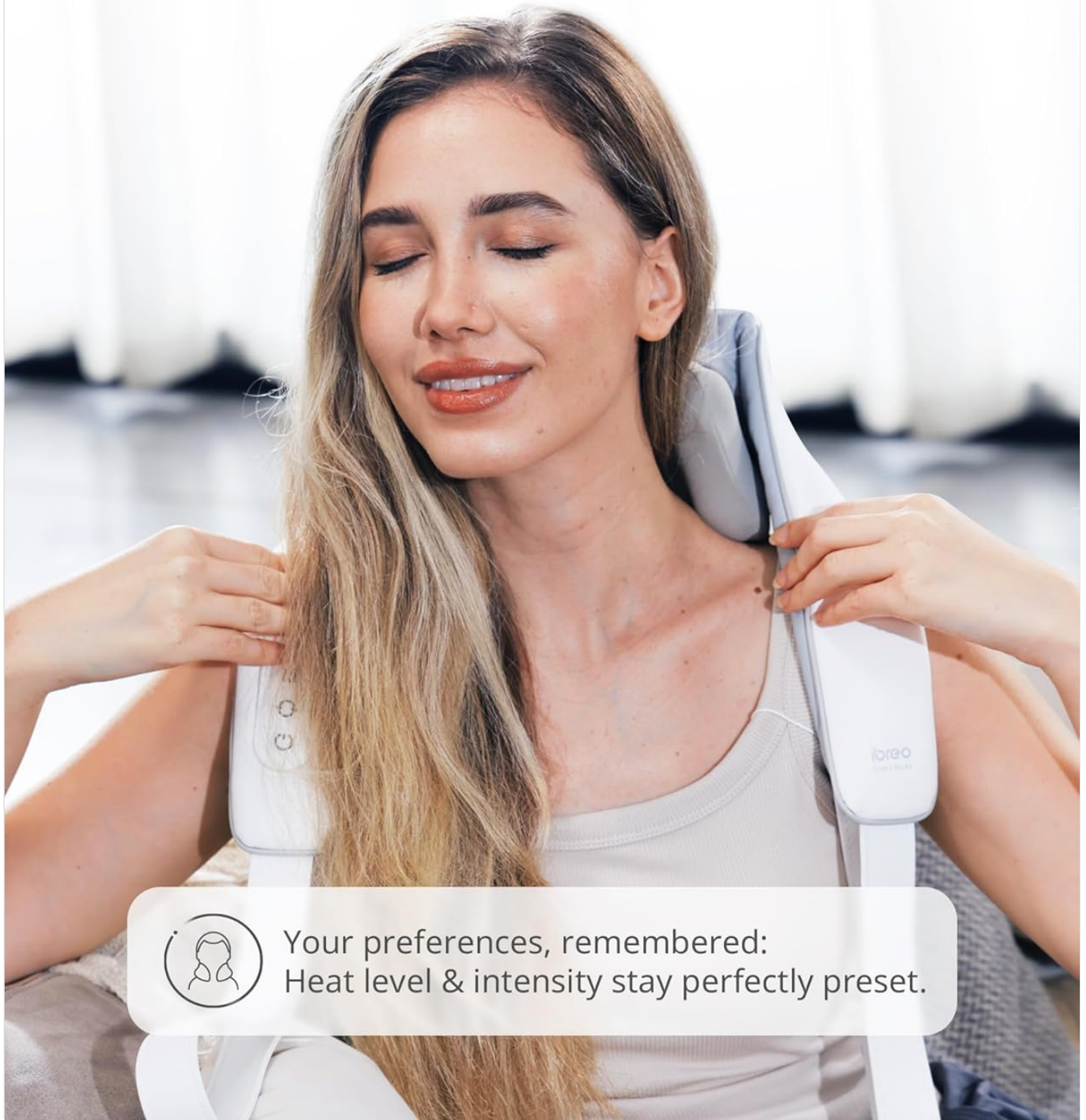


Image: A user interacting with the ibreo massager, highlighting the smart voice indicator feature for real-time operation guidance.

7. MAINTENANCE

- **Cleaning:** Ensure the massager is turned off and unplugged before cleaning. The removable headrest material can be hand-washed. Wipe the main unit with a soft, damp cloth. Do not use abrasive cleaners or immerse the device in water.
- **Storage:** Store the massager in a cool, dry place, away from direct sunlight and extreme temperatures.
- **Battery Care:** To prolong battery life, avoid fully discharging the battery frequently. Charge the device regularly,

even if not in use for extended periods.



Image: Hands demonstrating the removable and washable cover of the ibreo massager, emphasizing ease of cleaning.

8. TROUBLESHOOTING

Problem	Possible Cause	Solution
Device does not turn on.	Battery is low or depleted.	Charge the device fully using the provided USB-C cable.
Massage nodes stop moving.	Overheating protection activated.	Turn off the device and allow it to cool down for 30 minutes before restarting.
Heat function is not working.	Heat function not activated or device is in a cool-down cycle.	Ensure the Heat button is pressed. Allow a few minutes for the heating elements to warm up.
Voice prompts are unclear or too loud/quiet.	Volume setting or environmental noise.	Check if there's a volume control (if available, not specified in input). Ensure you are in a quiet environment.

9. SPECIFICATIONS

Feature	Detail
Brand	ibreo
Model Number	Neck S
Product Dimensions	8.27 x 7.09 x 5.91 inches
Item Weight	2.84 Pounds
Power Source	Battery Powered

Feature	Detail
Battery Type	1 Nonstandard Battery (included)
Material	Spandex
Use For	Back, Leg, Neck, Shoulder
Manufacturer	Shenzhen Beirelaxed Intelligent Massage Robot Technology Co., Ltd.

10. WARRANTY AND SUPPORT

For warranty information or technical support, please refer to the product packaging or contact ibreo customer service directly. Details can often be found on the official ibreo website or through your point of purchase.

Online resources and FAQs may also be available to assist with common inquiries.

11. LEGAL DISCLAIMER

Statements regarding dietary supplements have not been evaluated by the FDA and are not intended to diagnose, treat, cure, or prevent any disease or health condition.