

JALUZELE DC2702

JALUZELE Dooya DC2702 RF433 Multi-Channel Remote Control User Manual

Model: DC2702

Brand: JALUZELE

1. INTRODUCTION

This manual provides comprehensive instructions for the safe and effective use of your JALUZELE Dooya DC2702 RF433 Multi-Channel Remote Control. This device is designed to operate various Dooya electric curtains, roller blinds, and sunshade tubular motors. Please read this manual thoroughly before operation and retain it for future reference.

2. PRODUCT OVERVIEW

The Dooya DC2702 is a 15-channel single control emitter, allowing you to manage up to 15 different motorized window treatments individually. Its ergonomic design ensures comfortable handling and ease of use.



Figure 2.1: Front view of the Dooya DC2702 remote control, showing the LCD screen and control buttons.

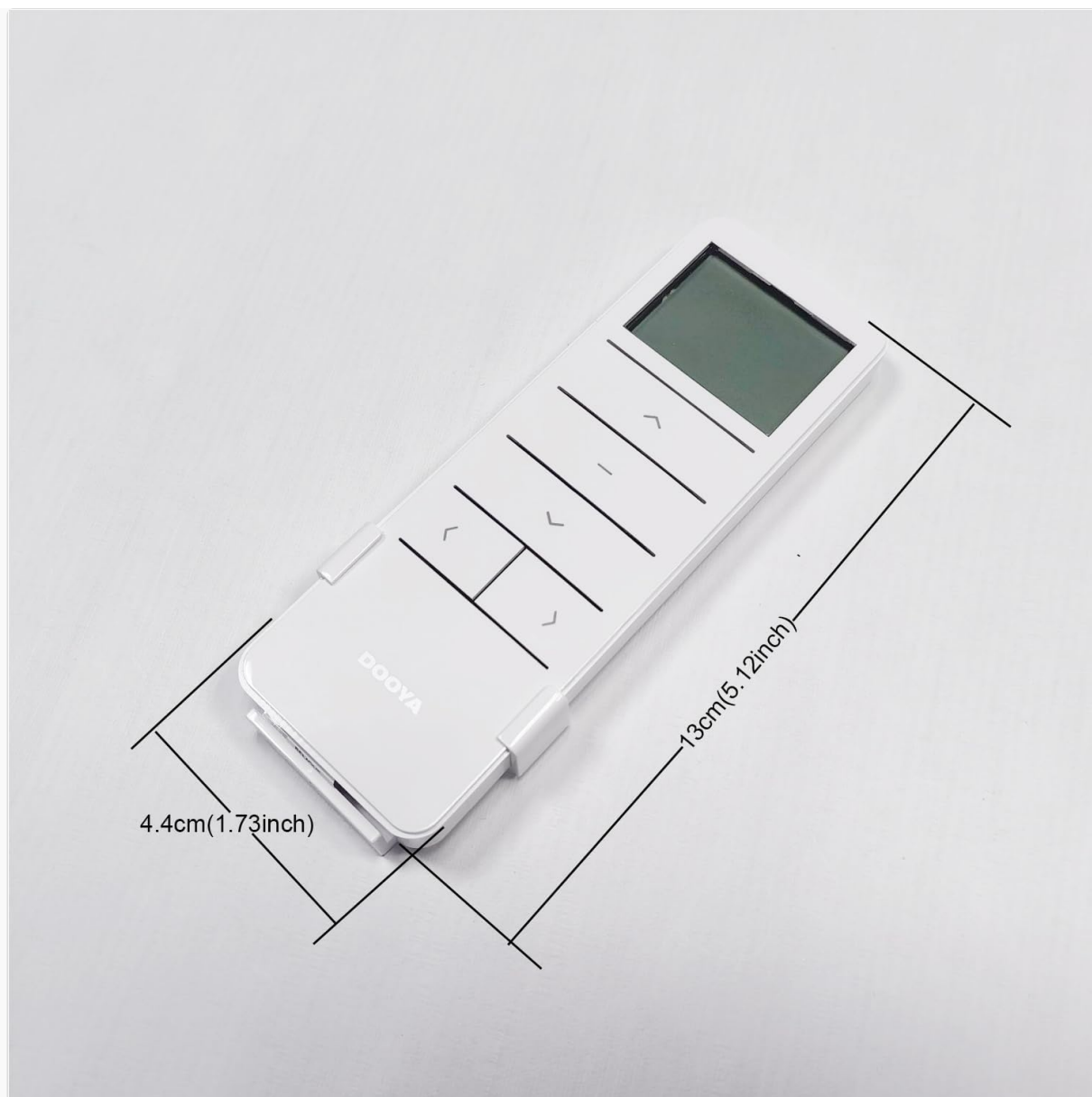


Figure 2.2: Dimensions of the Dooya DC2702 remote control, measuring approximately 13cm (5.12 inches) in length and 4.4cm (1.73 inches) in width.



Figure 2.3: The Dooya DC2702 remote control shown alongside its included wall-mount holder for convenient storage.

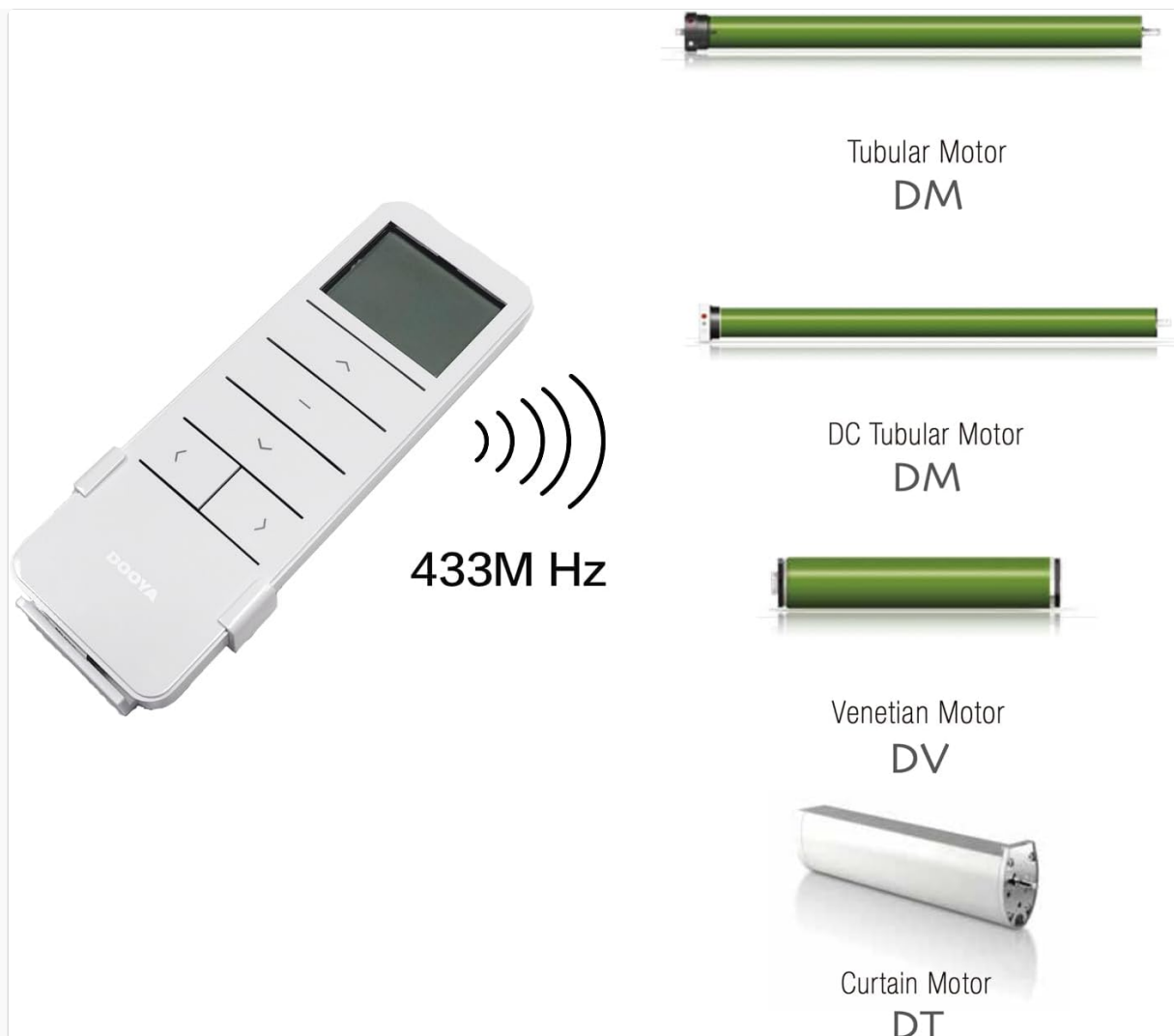


Figure 2.4: Illustration of the Dooya DC2702 remote control's compatibility with various 433MHz Dooya motors, including Tubular Motor DM, DC Tubular Motor DM, Venetian Motor DV, and Curtain Motor DT.

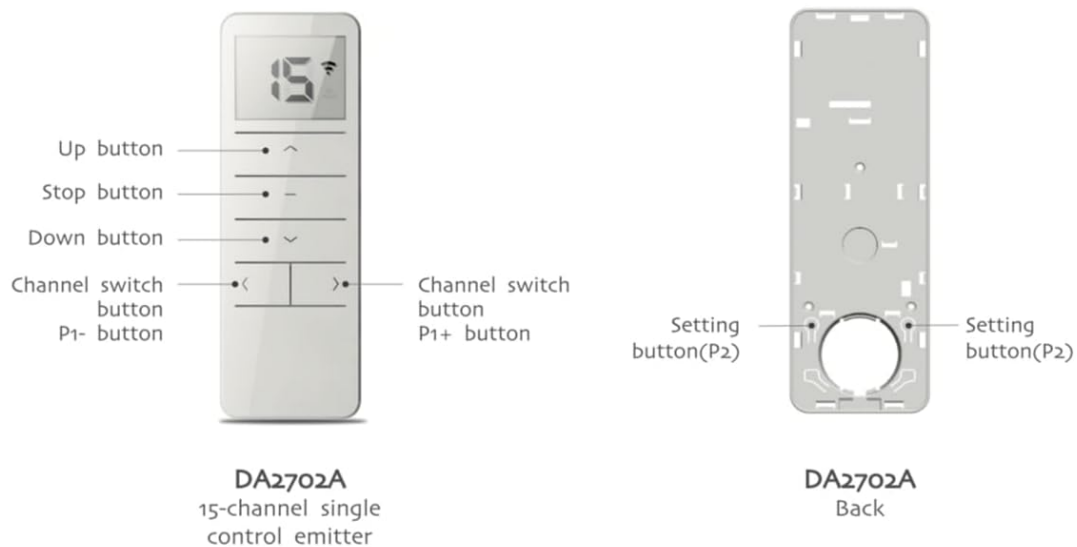
3. COMPONENTS AND CONTROLS

The DC2702 remote control features an intuitive layout for easy operation:

- **LCD Screen:** Displays the currently selected channel number (1-15).
- **Up Button (▲):** Moves the curtain/blind upwards.
- **Stop Button (–):** Stops the curtain/blind movement.
- **Down Button (▼):** Moves the curtain/blind downwards.
- **Channel Switch Button P1- (◀):** Decreases the channel number.
- **Channel Switch Button P1+ (▶):** Increases the channel number.
- **Setting Button (P2):** Used for pairing and protocol switching.



Type specification



Technical support

Fucntion instruction	Technical specification
<ul style="list-style-type: none"> • Input voltage: 3V (CR2450) • Emission frequency: 433.92MHz±100KHz • Emission current: 6~15mA • Quiescent current: <15uA • Operating temperature: -10℃~50℃ • Transmssion distance: >35m 	<p>DA2702A is a 15-channel single control emitter. One number of LCD screen means one control channel. Press "channel switch" button P1- (number descending) or P1+ (number increasing) to change the channel. On the analogy of this, loose finger when the indicator light move to suitable channel that you select effective channel.</p> <p>Notice: Emitter do not exposed to moisture and strike, so as not to affect life. When you use emitter, if found emission distance obviously short or less sensitive, please change another same new battery. Please have batteries for recycling.</p>

Figure 3.1: Detailed diagram of the Dooya DC2702 remote control, labeling the Up, Stop, Down, Channel Switch (P1- and P1+), and Setting (P2) buttons, along with the LCD screen.

4. SPECIFICATIONS

- **Input Voltage:** 3V (CR2450 battery)
- **Emission Frequency:** 433.92MHz ± 100KHz
- **Emission Current:** 6~15mA
- **Quiescent Current:** <15uA
- **Operating Temperature:** -10℃ to 50℃
- **Transmission Distance:** >35m (open area)
- **Material:** Plastic
- **Item Weight:** Approximately 200g
- **Compatible Devices:** Dooya Electric Curtains, Roller Blinds, Sunshade Tubular Motors
- **Max Number of Supported Devices:** 15

- **Connectivity Technology:** Radio Frequency (RF)

5. SETUP

5.1 Battery Installation

The remote control requires one CR2450 button cell battery.

1. Locate the battery compartment cover on the back of the remote control.
2. Gently slide or pry open the cover to access the battery slot.
3. Insert a new CR2450 battery, ensuring the positive (+) side faces upwards.
4. Replace the battery compartment cover securely.



Figure 5.1: View of the Dooya DC2702 remote control with the battery compartment open, showing the slot for a CR2450 battery.

5.2 Switching Protocols

The emitter defaults to a rolling code protocol. If your motor requires the Dooya protocol, you can switch it using the following steps:

1. Ensure the motor is powered off.
2. Long press the Setting button (P2) on the remote control.

3. While still holding P2, power on the motor.
4. Release P2. The LCD display will show either "K" for rolling code protocol or "D" for Dooya protocol.
5. Press P2 again to toggle between "K" and "D" until the desired protocol is displayed.
6. Press the Stop button (–) to confirm the selection.

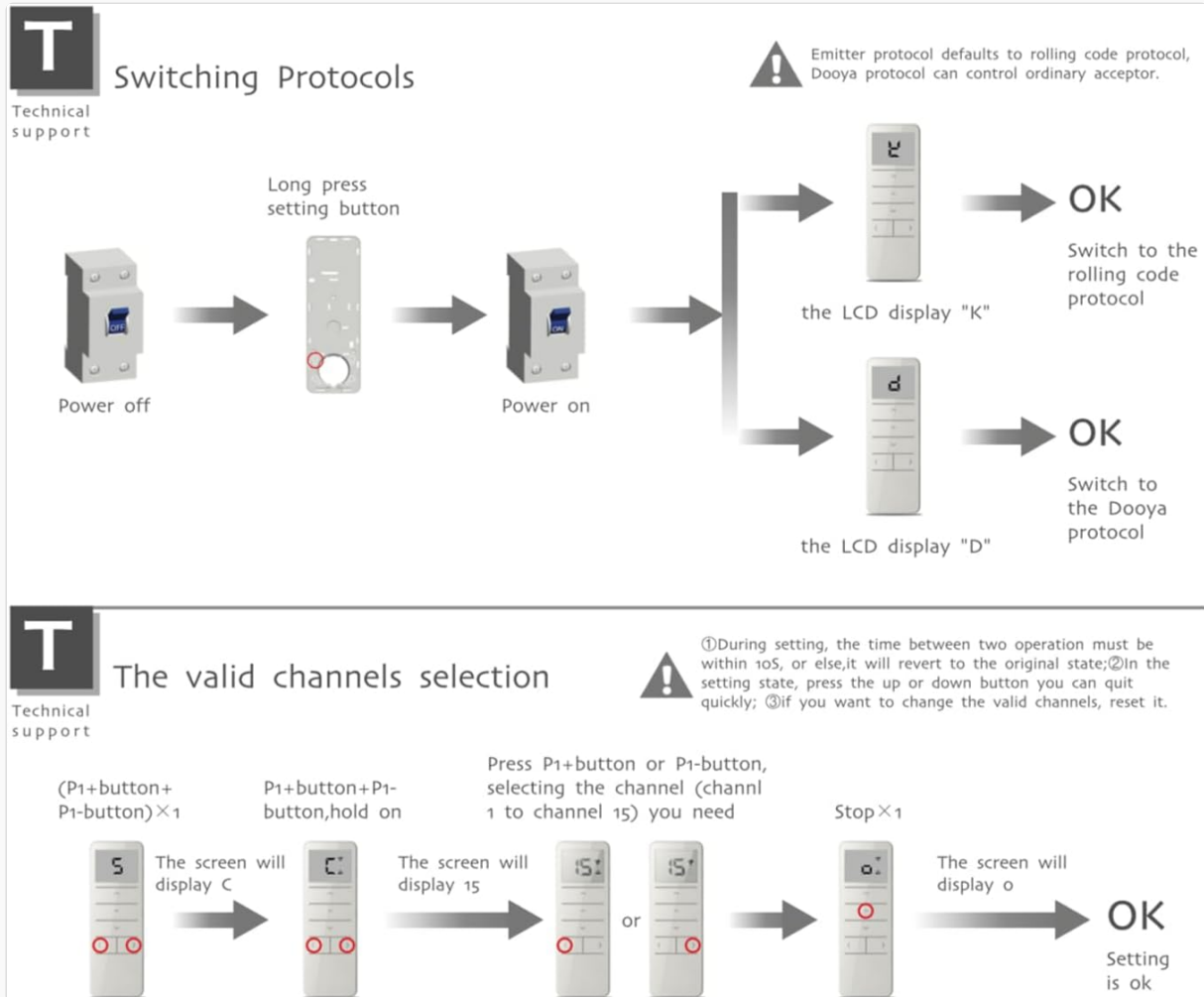


Figure 5.2: Diagram illustrating the steps to switch between rolling code and Dooya protocols on the DC2702 remote control, showing the power cycle and LCD feedback.

6. OPERATING INSTRUCTIONS

6.1 Channel Selection

The DC2702 allows control of up to 15 channels. The LCD screen displays the active channel number.

1. Press the **P1-** button (◀) to decrease the channel number.
2. Press the **P1+** button (▶) to increase the channel number.
3. Release the button when the desired channel number (1-15) appears on the LCD screen. This channel is now active for control.

6.2 Basic Control

Once a channel is selected, use the main control buttons:

- Press the **Up** button (▲) to raise or open the connected curtain/blind.
- Press the **Down** button (▼) to lower or close the connected curtain/blind.
- Press the **Stop** button (–) to halt the movement of the curtain/blind at any desired position.

7. MAINTENANCE

7.1 Battery Replacement

If you notice a significant decrease in the remote control's emission distance or responsiveness, it is time to replace the battery. Refer to Section 5.1 for battery installation instructions. Please dispose of used batteries responsibly through recycling programs.

7.2 Care and Handling

- Avoid exposing the emitter to moisture or direct water contact.
- Protect the remote control from physical impact or dropping.
- Clean the remote control with a soft, dry cloth. Do not use abrasive cleaners or solvents.

8. TROUBLESHOOTING

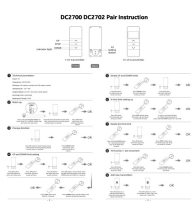


- **Remote not responding or short range:** Replace the CR2450 battery (refer to Section 5.1). Ensure there are no significant obstructions between the remote and the motor.
- **Motor not responding to commands:** Verify that the correct channel is selected on the remote control. Ensure the remote control and motor are paired correctly and using the same protocol (refer to Section 5.2). Check the motor's power supply.
- **LCD screen is blank:** The battery may be depleted. Replace the CR2450 battery.

9. WARRANTY AND SUPPORT

For warranty information, technical support, or service inquiries, please contact your original point of purchase or the manufacturer directly. Keep your purchase receipt as proof of purchase.

© 2025 JALUZELE. All rights reserved.

Related Documents - DC2702

	<p>DC2700 DC2702 Pair Instruction Manual for Motorized Blinds</p> <p>Comprehensive guide for pairing DC2700 and DC2702 remote controls with motorized blinds and setting operational limits, including tilt function instructions.</p>
	<p>Somfy România: Impactul Sistemelor de Umbrire Exterioară asupra Eficienței Energetice</p> <p>Studiu de piață Somfy România privind percepția consumatorilor asupra sistemelor automate de umbrire exterioară și beneficiile lor pentru eficiența energetică a locuințelor.</p>
	<p>TOP PROFIL SISTEM SRL - Certificat de Garanție pentru Materiale Metalice</p> <p>Certificat de garanție pentru produse metalice de construcții de la TOP PROFIL SISTEM SRL, inclusiv șipcă, jaluzele, țiglă, tablă și lambriu. Detaliază condițiile de acordare, solicitare și transport/depozitare conform legislației românești.</p>

