

Manuals+

[Q & A](#) | [Deep Search](#) | [Upload](#)

manuals.plus /

- › [70mai](#) /
- › [70mai Dash Cam A410 User Manual](#)

70mai A410

70mai Dash Cam A410 User Manual

Model: A410 | Brand: 70mai

INTRODUCTION

This manual provides detailed instructions for the installation, operation, and maintenance of your 70mai Dash Cam A410. Please read this manual thoroughly before using the device to ensure proper functionality and safety. The 70mai Dash Cam A410 offers high-quality front (2.5K) and rear (1080P) recording, enhanced night vision with HDR, built-in Wi-Fi and GPS, 24-hour parking surveillance, and seamless loop recording.

WHAT'S IN THE BOX



Image: All components included in the 70mai Dash Cam A410 package.

- 70mai Dash Cam A410 (Front Camera)
- 70mai RC21 Rear Camera
- 64GB SD Card
- Dual USB Car Charger
- Power Cord
- Rear Camera Cable
- Wiring Trim Tool
- Mount
- User Manual
- Electrostatic Stickers (x2)
- Adhesive Stickers (x2)

SETUP GUIDE

1. Memory Card Installation

Before first use, insert the provided 64GB SD card into the dash cam. Ensure the card is oriented correctly and clicks into place.

Your browser does not support the video tag.

Video: Demonstrates how to insert the memory card into the 70mai Dash Cam A410. (Relevant segment: 0:05-0:12)

2. Power Connection

Plug the car charger into your vehicle's cigarette lighter socket. Connect the power cord from the charger to the dash cam. The dash cam should power on automatically.

Your browser does not support the video tag.

Video: Shows how to connect the dash cam to the car's power supply. (Relevant segment: 0:13-0:34)

3. Mounting the Dash Cam

Clean the windshield area where you intend to mount the dash cam. Apply the electrostatic sticker to the windshield, then attach the dash cam to the sticker. Route the power cable neatly along the headliner using the provided trim tool.

Your browser does not support the video tag.

Video: Guide on cleaning the windshield, applying the electrostatic sticker, and mounting the dash cam. (Relevant segment: 0:35-1:23)

4. Rear Camera Installation (RC21)

Connect the rear camera cable to the main dash cam unit. Mount the rear camera on your rear windshield using an electrostatic sticker, ensuring the windshield is clean for optimal adhesion. Route the cable along the vehicle's interior trim to conceal it.

Your browser does not support the video tag.

Video: Instructions for connecting and installing the rear camera. (Relevant segment: 1:24-2:44)

OPERATING INSTRUCTIONS

1. App Connection

To connect your dash cam to the 70mai app, ensure the dash cam is powered on. Open the 70mai app on your smartphone, tap the '+' sign to add a new device, and select 'Dash Cam with screen'. Connect to the dash cam's Wi-Fi hotspot (usually named '70mai_A410_xxxx') and enter the default password. Once connected, you can view live footage, access recorded videos, and adjust settings.

Your browser does not support the video tag.

Video: Demonstrates the process of connecting the 70mai Dash Cam A410 to the mobile application via Wi-Fi. (Relevant segment: 0:06-0:58)

2. Button Functions

The dash cam features several buttons for direct control:

- **Power Button:** Press to turn on/off the dash cam. Hold for 3 seconds to turn off. Hold for 15 seconds for force shutdown. In power-on status, press to turn off/light up the screen.
- **Function Buttons:** Used for various operations such as switching between front and back recording, starting

emergency video recording, entering the album page, and accessing settings.

- **Indicator Light:** Green indicates recording, Blue indicates not recording, Red indicates a recording error.

Your browser does not support the video tag.

Video: Explains the functions of the buttons and indicator lights on the dash cam. (Relevant segment: 1:10-2:15)

KEY FEATURES

Impressive 2.5K+1080P Clarity

The 70mai Dash Cam A410 provides reliable, high-quality footage with 2.5K (2560x1440P) front and 1080P rear recording. Its 125° wide-angle lens captures a broad view of the road, ensuring clear visibility of license plates, street signs, and road conditions day and night.

Ultra HD **2.5K** Front + 1080P Rear

With 2560x1440P front camera and 1080P rear recording, no detail is missed – even in challenging light or disputed incidents.

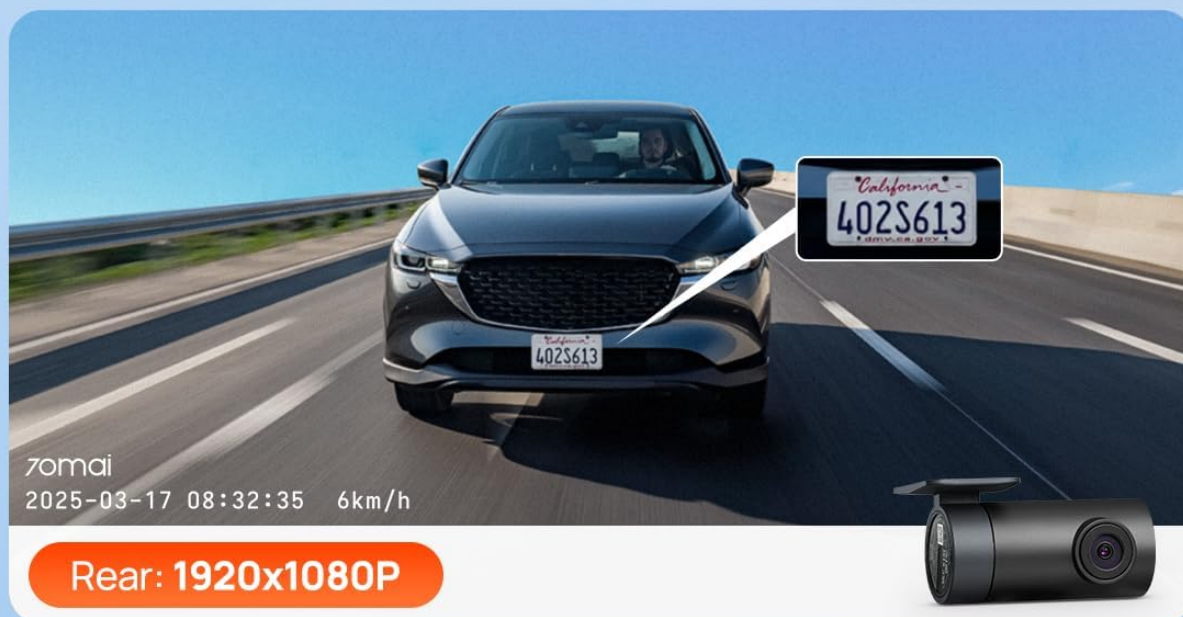
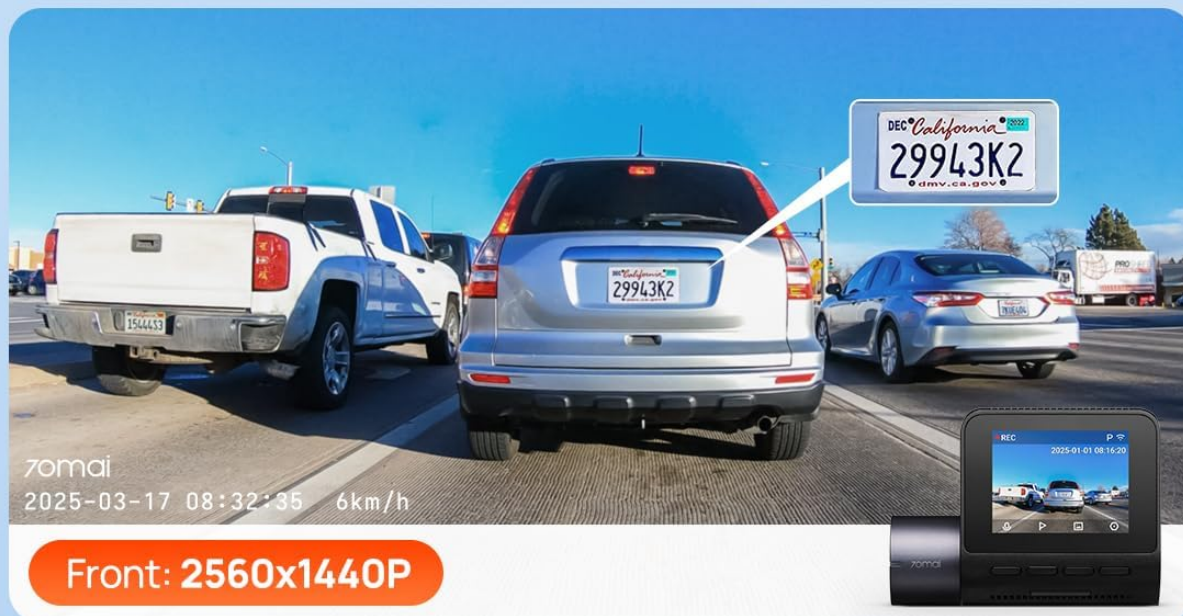


Image: Example of the dual-channel recording clarity, highlighting visible license plates from both front and rear cameras.

Super Night Vision with HDR

Master low-light driving with the F1.55 ultra-large aperture, HDR technology, and enhanced night vision. This combination reveals critical details like license plates and road signs in near-total darkness, delivering sharp, balanced video with reduced noise.

Super Night Vision

F1.55 Large Aperture + HDR + Enhanced Processing deliver true-to-life clarity in darkness – capturing critical details like license plates with precision.



F1.55



HDR



70mai Night Owl Vision™



Image: Visual comparison demonstrating the superior clarity and detail captured by the Super Night Vision with HDR in dark conditions.

Smart WiFi & App Integration

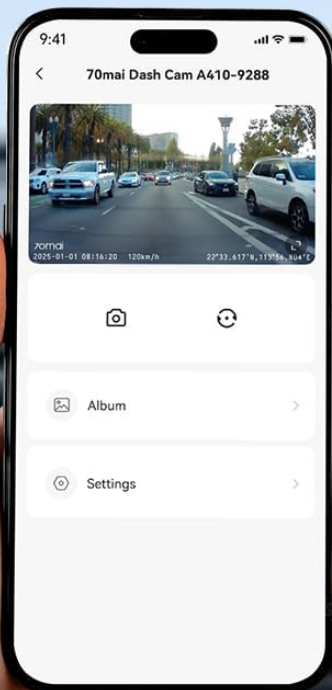
Effortlessly connect your smartphone to the dash cam's Wi-Fi via the dedicated 70mai app. This allows for instant access to front and rear camera feeds, smooth viewing, downloading, and sharing of 2.5K+1080P recordings. You can also customize resolution and G-Sensor collision detection directly from your device.

Smart APP Control

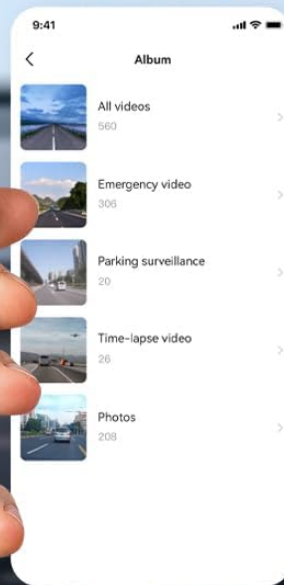
Wirelessly preview videos and search by time on your phone, or plug directly to computers for instant file transfers – no internet or card reader required.



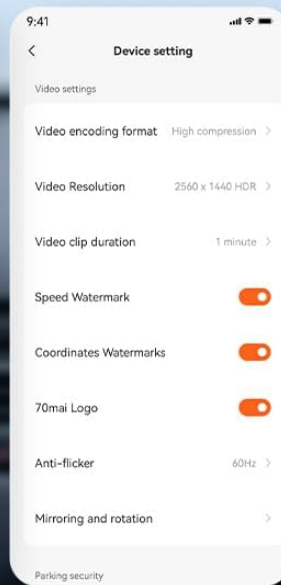
Live View



Playback



Dashcam Setting



Download



Image: Screenshots of the 70mai mobile application, illustrating its features for live viewing, video playback, settings adjustment, and content download.

24/7 Parking Surveillance with G-Sensor

Protect your vehicle around the clock. This dash cam activates time-lapse recording and collision detection when parked (requires optional hardwire kit UP03, ASIN: B09TDZ6FWZ). The built-in G-sensor instantly locks footage upon impact, capturing critical events like hits or vandalism in clear detail. Locked files are saved separately to preserve key evidence.

Build in GPS

Tracks routes, real-time speed & location – ideal for replaying road trips, verifying commute distances, or securing evidence with timestamped proof.



GPS Track



Speed



Route



Share

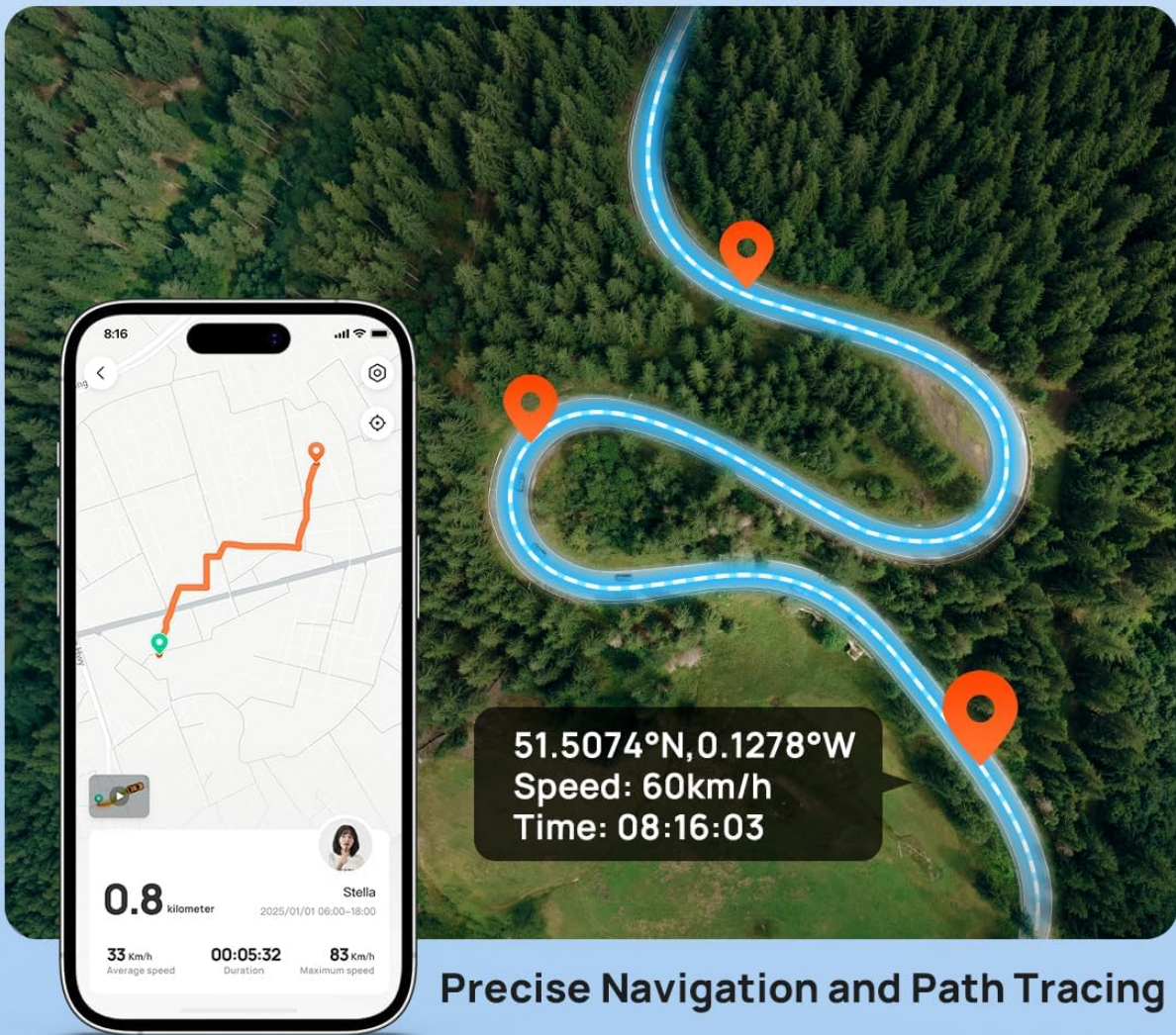


Image: Visual representation of the 24/7 parking surveillance features, including G-sensor collision detection and time-lapse recording.

Seamless Loop Recording + Expandable Storage

Enjoy continuous coverage with automatic overwriting of the oldest footage when storage fills. Press the emergency button to instantly lock important clips. The dash cam includes a 64GB SD card and supports expansion up to 256GB, providing ample space for extensive recording.

24H Parking Monitor with Low-light Night Vision

Featuring time-lapse recording and G-sensor collision detection to ensure your car is always protected, day or night.



Need Hardwire Kit UP03
(ASIN: B09TDZ6FWZ)



24/7 Parking Mode



Time-lapse Recording



Low-light Night Vision

Image: Diagram explaining loop recording and storage capacity based on different SD card sizes.

Built-in GPS for Reliable Evidence

Drive with documented precision. The integrated GPS embeds coordinates, speed, and timestamps directly onto footage, creating court-admissible records and preserving road trip memories. View routes via the app or replay journeys with mapped data.

Auto-Lock Critical Evidence at Impact

Automatically saves 10 sec to 3 min of pre-/post-collision footage, adjusting recording length to secure evidence.

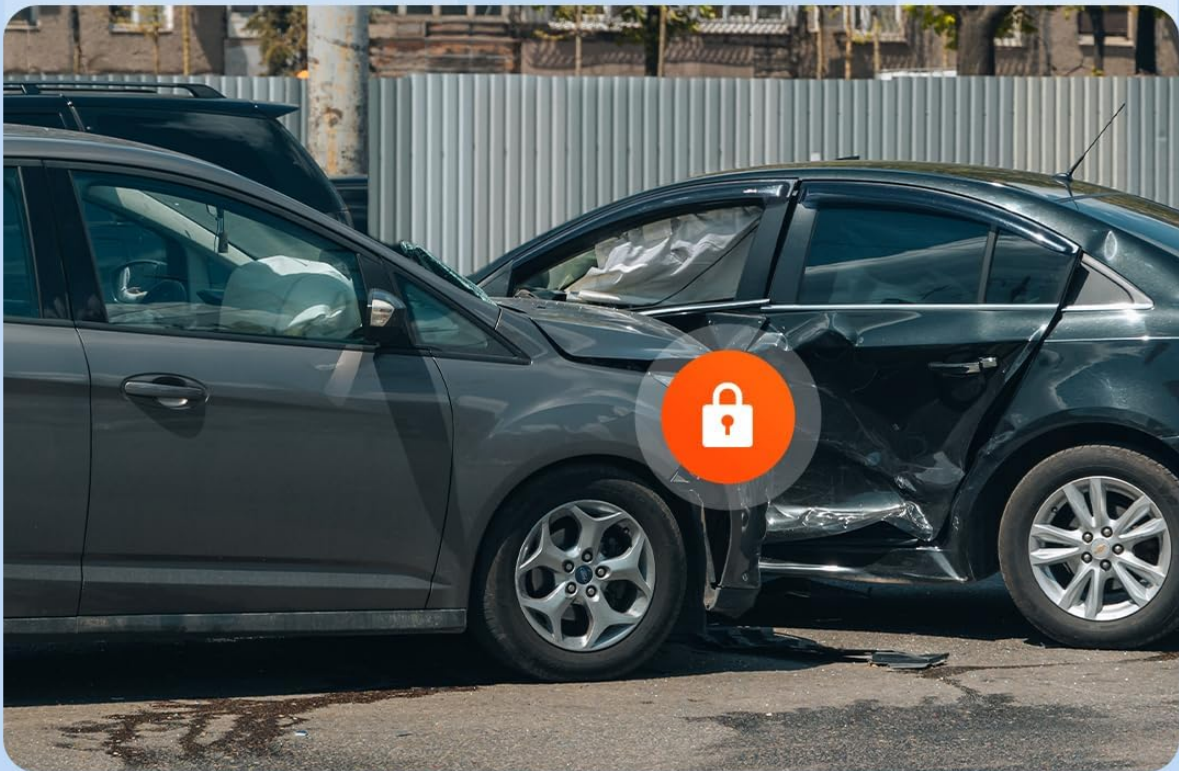
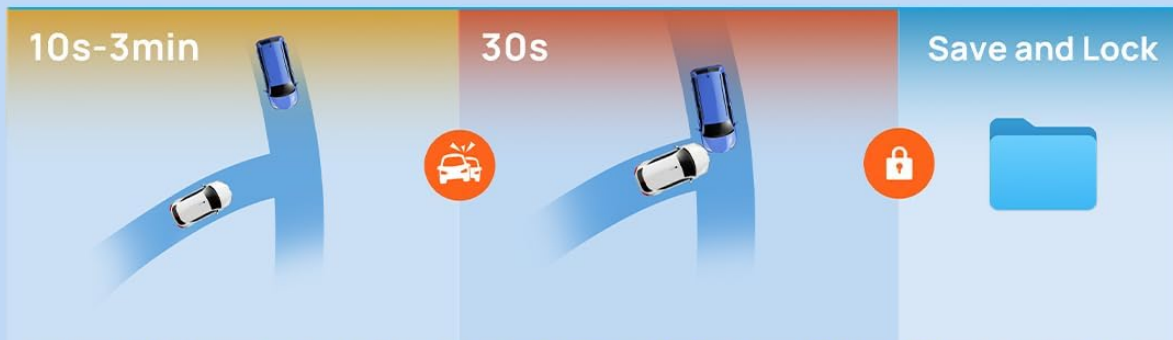


Image: Display of GPS tracking capabilities, showing recorded routes, speed, and timestamps on a map interface.

MAINTENANCE

- **Cleaning:** Regularly wipe the camera lens and screen with a soft, dry cloth to ensure clear recordings. Avoid using abrasive cleaners or solvents.
- **Firmware Updates:** Keep your dash cam's firmware updated to ensure optimal performance and access to

new features. Updates can typically be performed via the 70mai app.

- **Memory Card:** Periodically format the SD card (at least once a month) to prevent data corruption and ensure smooth recording. Back up any important videos before formatting.
- **Power Supply:** Always use the included car charger adapter and power cable for stable power supply. Third-party accessories may cause insufficient voltage or loose connections, leading to automatic shutdowns.

Your browser does not support the video tag.

Video: Guide on how to perform a firmware update for the 70mai Dash Cam A410. (Relevant segment: 0:00-0:59)

TROUBLESHOOTING

Problem	Possible Cause / Solution
Dash cam does not power on.	Check if the car charger is properly inserted into the cigarette lighter socket. Ensure the power cable is securely connected to the dash cam. Verify the car's cigarette lighter socket is receiving power.
Dash cam automatically shuts down.	Ensure you are using the original 70mai car charger and power cable. Insufficient voltage from third-party accessories can cause shutdowns. Check for loose connections.
Poor video quality / blurry images.	Clean the camera lens with a soft cloth. Ensure the protective film has been removed from the lens. Check if the dash cam is securely mounted and not vibrating.
Wi-Fi connection issues.	Ensure the dash cam's Wi-Fi hotspot is enabled. Keep your smartphone close to the dash cam during connection. Disable VPN or other network-interfering apps on your phone.
SD card error / recording issues.	Format the SD card via the dash cam settings or the 70mai app. Ensure the SD card is a high-speed (Class 10 or U1/U3) card. Try a different SD card to rule out card malfunction.

SPECIFICATIONS

Feature	Detail
Model Name	A410
Product Dimensions	1.49 x 3.26 x 2.38 inches
Item Weight	15.8 ounces

Feature	Detail
Video Capture Resolution	Front: 2.5K (2560x1440P), Rear: 1080P
Aperture	F1.55
Connectivity Technology	Wi-Fi
Special Features	HDR, Super Night Vision, 24H Parking Surveillance, Built-in GPS, Loop Recording, Smart App, OTA Upgrades
Included SD Card	64GB (supports up to 256GB expansion)
Mounting Type	Adhesive mount

WARRANTY AND SUPPORT

70mai offers comprehensive support for its products:

- **Warranty:** The 70mai Dash Cam A410 comes with a 12-month warranty.
- **Customer Support:** For assistance with setup or troubleshooting, you can contact 70mai customer support via phone or email.
- **Protection Plans:** Optional protection plans are available for extended coverage:
 - 2-Year Protection Plan
 - 3-Year Protection Plan
 - Complete Protect (monthly plan)

For more information, please visit the official 70mai store or contact their support channels.