



Manuals.plus /

› GABRYLLY /

› GABRYLLY GY82766 Ergonomic Office Chair with Footrest Instruction Manual

## GABRYLLY GY82766

# GABRYLLY GY82766 Ergonomic Office Chair with Footrest Instruction Manual

Model: GY82766

Brand: GABRYLLY

### IMPORTANT SAFETY INFORMATION

- Read all instructions before assembly and use.
- Ensure all screws and bolts are tightened securely before use.
- Do not stand on the chair.
- Do not use the chair if any parts are damaged or missing.
- Maximum weight capacity: 400 lbs.

### PACKAGE CONTENTS

Please verify all components are present before beginning assembly.

- Chair Base (B)
- Wheels (A)
- Gas Rod (E)
- Gas Rod Cover (F)
- Backrest (H)
- Seat Cushion (G)
- L-Panel (I)
- Pedal Holders (K)
- Foot Pedal (J)

- Mechanism (D)
- Screws (M1, M2, M3, M4, M5)
- Rubber Bands (M6)
- Lumbar Pillow
- Assembly Tools (Allen Wrench)

## SETUP AND ASSEMBLY

Follow these steps carefully for proper assembly.

### Step 1: Assemble the Chair Base

Insert the 5 chair legs (B) into the central hub of the base. Secure them with the provided M6x16mm screws (M4)\*5. Ensure they are tightened to 100% after initially screwing to 50% for position locking.

Insert the 5 wheels (A) into the ends of the chair legs. Ensure the two rings on the wheel rod are fully inserted.

Place the gas rod (E) into the center of the assembled base. Cover it with the gas rod cover (F).

Your browser does not support the video tag.

Video: GABRYLLY Cross-Legged Chair Installation (GY82766). This video demonstrates the complete assembly process for the GY82766 chair, including attaching the base, wheels, and gas lift.

### Step 2: Attach the L-Panel to the Backrest

Attach the L-Panel (I) to the Backrest (H) using the provided 1/4" x 1-3/8" screws (M1)\*4. When installing multiple screws, first screw each to 50% position locking, then tighten all to 100% in a diagonal fashion (1-2-3-4) to ensure even securement.

Your browser does not support the video tag.

Video: GABRYLLY Cross-Legged Chair Installation (GY82766). This video demonstrates the complete assembly process for the GY82766 chair, including attaching the L-Panel to the backrest.

### Step 3: Attach Pedal Holders and Foot Pedal to Seat Cushion

Attach the two pedal holders (K) to the seat cushion (G) using the provided 1/4" x 1-3/4" screws (M3)\*4. Ensure they are installed toward the "FRONT" label on the seat cushion.

Insert the foot pedal (J) into the pedal holders (K).

Place two rubber bands (M6) onto the foot pedal rods for secure fitting.

Video: GABRYLLY Cross-Legged Chair Installation (GY82766). This video demonstrates the complete assembly process for the GY82766 chair, including attaching the pedal holders and foot pedal to the seat cushion.

### Step 4: Attach the Mechanism to the Seat Cushion

Attach the mechanism (D) to the seat cushion (G) using the provided 1/4" x 7/8" screws (M5)\*4. Ensure the tension knob of the mechanism points towards the foot pedal. Follow the diagonal screwing method (50% then 100%) for secure attachment.

Video: GABRYLLY Cross-Legged Chair Installation (GY82766). This video demonstrates the complete assembly process for the GY82766 chair, including attaching the mechanism to the seat cushion.

### Step 5: Attach the Backrest to the Mechanism

Attach the backrest (H) to the mechanism (D) using the provided 5/16" x 7/8" screws (M2)\*3. Ensure

the spacing of the 3 screws in each screw hole is the same to prevent the chair back from being sideways. Screw to 50% position first, then tighten to 100%.

Video: GABRYLLY Cross-Legged Chair Installation (GY82766). This video demonstrates the complete assembly process for the GY82766 chair, including attaching the backrest to the mechanism.

### Step 6: Insert the Gas Rod

Carefully insert the gas rod (E) into the mechanism (D) hole.

Video: GABRYLLY Cross-Legged Chair Installation (GY82766). This video demonstrates the complete assembly process for the GY82766 chair, including inserting the gas rod.

## OPERATING INSTRUCTIONS AND ADJUSTMENTS

### Adjusting the Side Wings (Armrests)

The chair features reversible armrests that can be adjusted to different positions.

1. To unfold or unlock: Press the side wings inward to release them from their locked position.
2. To flatten: Push the wings down to a flat position.
3. To lock at an angle: Press the wing inward to unlock it, then fold it up and lock it at your desired angle. There will be a "click" sound when the wings are locked into place. If no click is heard, press them fully to the bottom and fold them up again.



Image: Adjustment of Side Wings. This image visually guides users on how to adjust the chair's side wings for various seating preferences, including flat and angled positions.

Your browser does not support the video tag.

Video: How to adjust the armrest - GY82766. This video demonstrates the process of adjusting the chair's armrests, showing how to unlock, flatten, and lock them at different angles.

Your browser does not support the video tag.

Video: GY82766 Adjustment - GABRYLLY Cross-Legged Chair. This video provides a comprehensive guide to various adjustments on the GY82766 chair, including armrest functionality.

### Adjusting the Footrest

The chair includes a slide-out footrest for added comfort.

1. To extend: Pull out the footrest from under the seat.
2. To use: Flip the padded pedal inside out.

3. To retract: Flip the pedal back, then push the footrest fully back under the seat.

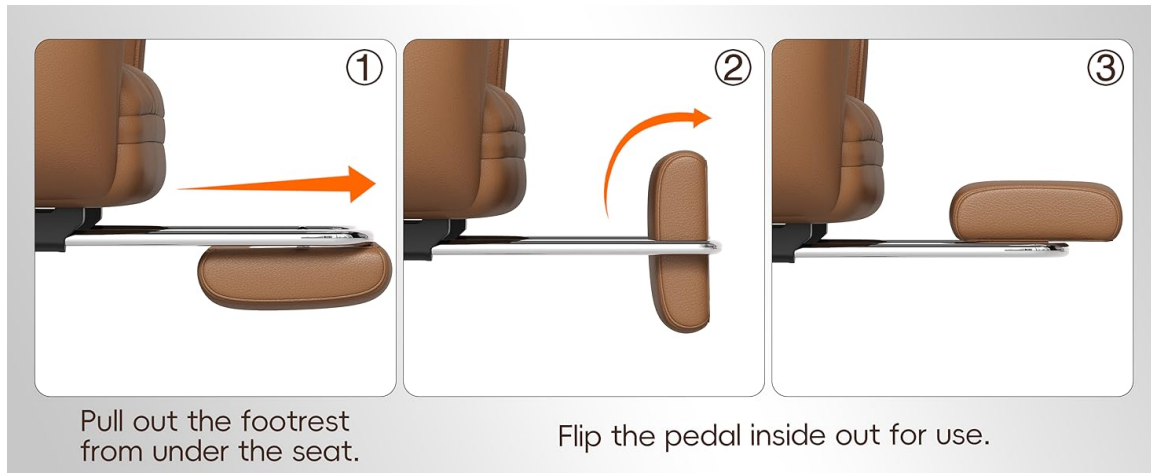


Image: Footrest Adjustment. This image demonstrates how to extend and position the integrated footrest for relaxation.

Your browser does not support the video tag.

Video: GY82766 Adjustment - GABRYLLY Cross-Legged Chair. This video provides a comprehensive guide to various adjustments on the GY82766 chair, including footrest functionality.

### Adjusting Seat Height

To adjust the seat height, lift the lever located under the seat forward. The seat will move up or down. Release the lever at your desired height to lock it in place.

Your browser does not support the video tag.

Video: GY82766 Adjustment - GABRYLLY Cross-Legged Chair. This video demonstrates the process of adjusting the chair's seat height using the lever.

### Adjusting Tilt Back Function

The chair offers a 120° tilt function with three lockable recline positions (90° Sitting, 105° Leisure, 120° Rest).

1. To recline: Pull out the handle located under the seat to unlock the backrest and enter reclining mode.
2. To lock: Push the handle in to lock the backrest at your desired recline angle.
3. To return to upright: Pull out the handle to unlock, then push your back against the backrest to return to the upright position. Push the handle in to lock.

# Leather Chair with **Footrest**

Sit as you wish for more possibilities.

①  
Work



②  
Meditation



③  
Pet-Friendly



④  
Gaming



Image: 3-Gear Recline Backrest. This image displays the three lockable recline positions of the chair, suitable for various activities.

Your browser does not support the video tag.

Video: GY82766 Adjustment - GABRYLLY Cross-Legged Chair. This video demonstrates the tilt back function, including unlocking, reclining, and locking the backrest.

## Adjusting Tilt Tension

To adjust the resistance of the tilt function, rotate the round knob located under the seat.

- Rotate to the right ("-"): Loosens the tension, allowing the backrest to lean back more smoothly and easily.
- Rotate to the left ("+"): Tightens the tension, strengthening the back tightness and making it harder to recline.

Your browser does not support the video tag.

Video: GY82766 Adjustment - GABRYLLY Cross-Legged Chair. This video demonstrates how to adjust the tilt tension knob for personalized recline resistance.

## MAINTENANCE

To maintain the quality and appearance of your GABRYLLY chair, follow these care instructions:

- **Cleaning:** Wipe clean with a damp cloth. Avoid harsh chemicals or abrasive cleaners.
- **Inspection:** Periodically check all screws and bolts to ensure they remain tight. Retighten as necessary.
- **Leather Care:** The leather material is tear and abrasion resistant and easy to clean. For specific leather care, use products designed for faux leather to maintain its condition.
- **Casters:** Ensure casters are free of debris to maintain smooth rolling and protect floors.

## Premium Craftsmanship

Built for durability, and comfort.

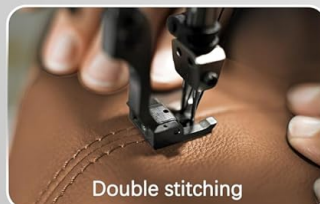


Image: Premium Craftsmanship. This image highlights the durable and easy-to-clean leather material of the chair.

## TROUBLESHOOTING

If you encounter any issues with your GABRYLLY GY82766 chair, please refer to the following common solutions:

- **Chair feels unstable/wobbly:** Ensure all assembly screws (M1, M2, M3, M4, M5) are fully tightened. Check that the gas rod is correctly seated in the mechanism and base.
- **Armrests do not lock in place:** Ensure you press the side wings inward firmly until you hear a "click" sound when adjusting. If they still don't lock, press them fully to the bottom and try again.

- **Backrest does not recline or lock:** Check the tilt back handle. Pull it out to unlock for reclining, push it in to lock. Ensure the tilt tension knob is not overtightened if reclining is difficult.
- **Footrest is difficult to extend/retract:** Ensure the foot pedal is correctly flipped and the rods are clear of obstructions. Apply gentle, even pressure when sliding.
- **Casters not rolling smoothly:** Check for any hair or debris caught in the wheels and clean them if necessary.

For further assistance, please contact GABRYLLY customer support.

## SPECIFICATIONS

Feature	Detail
Brand	GABRYLLY
Model Name	GY82766
Color	Brown
Product Dimensions	23.6"D x 29.9"W x 44.9"H
Seat Depth	20.5 inches
Material	Metal, Leather, Sponge
Fill Material	Foam
Maximum Weight Recommendation	400 Pounds
Special Features	Big and Tall, Foot Rest, Flip-down Armrest, Lumbar Pillow
Reclining Position Count	3 (up to 120°)
Certifications	BIFMA Standards, SGS Tested
Item Weight	54 pounds

## Extendable Cushion Width

Flip down the armrests, and the seat instantly expands from 21.6" to 48.8" wide.



Image: Product Dimensions and Features. This image provides a visual overview of the chair's key dimensions and features, including its expandable seat and weight capacity.

### WARRANTY AND SUPPORT

GABRYLLY provides dedicated customer care for this product.

- **Warranty:** Backed by a 3-year customer care program.
- **Quality Assurance:** Built to meet BIFMA standards and SGS tested for safety and durability.
- **Contact Support:** For any assistance, questions, or to address issues, please reach out to GABRYLLY customer support.

For more information or to register your product, please visit the official GABRYLLY store or contact their customer service.