

## Manuals+

[Q & A](#) | [Deep Search](#) | [Upload](#)

manuals.plus /

- › [domi outdoor living](#) /
- › [Domi 260 Gallon Resin Deck Box Instruction Manual](#)

domi outdoor living LNCZ0605-Fay-0515

# Domi 260 Gallon Resin Deck Box Instruction Manual

Model: LNCZ0605-Fay-0515

## INTRODUCTION

---

This manual provides essential information for the assembly, operation, maintenance, and troubleshooting of your Domi 260 Gallon Resin Deck Box. Please read these instructions carefully before assembly and use to ensure proper function and longevity of your product. Retain this manual for future reference.



Image: The Domi 260 Gallon Resin Deck Box shown open, storing patio cushions, pool supplies, and garden tools in an outdoor setting.

## SAFETY INFORMATION

---

- Do not allow children to play inside the deck box.
- Ensure the lid is securely closed when not in use to prevent accidental entrapment.
- Do not stand or sit on the lid unless specifically designed for seating and within weight limits. This model is designed to support up to 660 lbs as a bench.
- Keep hands clear of the lid's closing path to avoid pinching, especially with hydraulic air rods.
- Place the deck box on a level, stable surface.
- Do not store hazardous materials, flammable liquids, or corrosive substances inside the box.

## SETUP AND ASSEMBLY

---

Assembly of the Domi 260 Gallon Resin Deck Box is designed to be straightforward and typically takes approximately 30

minutes. No additional tools are required beyond what is provided or commonly available.

### Included Components:

- 1 Deck Box (panels and lid)
- Clear Instruction Manual
- Hardware (screws, hydraulic air rods, etc.)

### Assembly Steps:

1. **Unpack all components:** Carefully remove all parts from the packaging and verify against the parts list in the included instruction manual.
2. **Assemble the base:** Connect the base panel to the side panels as per the detailed diagrams in the separate instruction sheet.
3. **Attach the front and back panels:** Securely fasten the front and back panels to the assembled sides and base.
4. **Install the lid and hydraulic air rods:** Attach the lid to the main body. Install the hydraulic air rods to ensure smooth opening and closing. Refer to the specific diagrams for correct orientation and attachment points.
5. **Final checks:** Ensure all connections are secure and the lid operates smoothly.



# All-Weather Use Resin

The resin storage box prevents rust and corrosion and keeps your outdoor storage box looking new.



UV Proof



Water Proof

Image: A close-up view of the resin material, illustrating its UV-resistant and waterproof properties, crucial for outdoor durability.

## OPERATION

### Storage Capacity:

The deck box offers a generous 260-gallon capacity, suitable for storing a variety of outdoor items such as patio cushions, pool supplies, garden tools, and sports equipment. This helps maintain an organized outdoor living space.



Image: The deck box shown open, revealing its spacious interior filled with diverse items like pillows, balls, and garden tools.

### Lid Mechanism:

Equipped with two hydraulic air rods, the lid opens effortlessly and closes slowly and controlled. This design minimizes the risk of pinched fingers and ensures smooth operation.



# Air Rod Design

Open easily and close slowly,  
avoid hand injuries caused by sudden closure.



Image: A detailed view of the hydraulic air rod, illustrating its function in assisting the lid's opening and closing.

## Security and Portability:

- **Lockable Lid:** The lid includes integrated lock-holes, allowing for the use of a padlock (not included) to secure your stored items.
- **Side Handles:** Built-in side handles facilitate easy lifting and repositioning of the deck box.
- **Mobility Rollers:** Integrated rollers on one side enable convenient movement of the box across flat surfaces.



Image: A composite image highlighting the lockable feature, side handles, movable wheels, and hydraulic air rod for enhanced security and portability.

### **Multi-Functional Use:**

Beyond storage, the robust design of the Domi deck box allows it to function as a comfortable bench, supporting up to 660 lbs, or as an additional outdoor table surface.





## WHY CHOOSE US?

Durable & Stable ☒



Single-layered flimsy plastic ☒

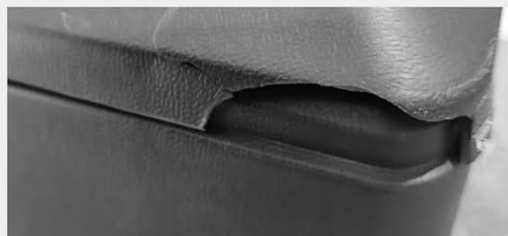


Image: The deck box serving as a seating option for a child, demonstrating its dual functionality as a storage unit and a bench.

### Product in Use:

Your browser does not support the video tag.

Video: A demonstration of the Domi deck box in an outdoor setting, showcasing its storage capabilities and ease of use for a family.

## MAINTENANCE

The Domi Resin Deck Box is constructed from premium resin material, designed for durability and minimal maintenance.

### Cleaning:

- Wipe down the exterior surfaces with a soft cloth and mild soap and water solution.
- Avoid using abrasive cleaners, harsh chemicals, or stiff brushes, as these can damage the resin finish.
- Rinse thoroughly with clean water and dry with a soft cloth to prevent water spots.



Weather Resistance:

The resin material is inherently waterproof and UV-resistant, preventing fading, warping, or cracking under various weather conditions. Regular cleaning helps maintain its appearance and protective qualities.

Rust Resistance:

The materials used are designed to be rust-resistant, ensuring long-term performance in outdoor environments.

TROUBLESHOOTING

Problem	Possible Cause	Solution
Lid does not close properly or is stiff.	<ul style="list-style-type: none"><li>Obstruction in the hinge mechanism.</li><li>Hydraulic air rods are misaligned or damaged.</li><li>Box is not on a level surface.</li></ul>	<ul style="list-style-type: none"><li>Check for debris and clear any obstructions.</li><li>Inspect air rods for damage or incorrect installation; re-align or replace if necessary.</li><li>Relocate the box to a flat, stable area.</li></ul>
Water inside the storage box.	<ul style="list-style-type: none"><li>Lid not fully closed.</li><li>Seal around the lid is compromised.</li><li>Extreme weather conditions (e.g., heavy rain, standing water).</li></ul>	<ul style="list-style-type: none"><li>Ensure the lid is completely shut and latched.</li><li>Inspect the lid's sealing edges for damage or gaps.</li><li>Consider placing the box in a more sheltered area during severe weather.</li></ul>
Difficulty moving the box.	<ul style="list-style-type: none"><li>Wheels are obstructed or damaged.</li><li>Box is overloaded.</li><li>Surface is uneven or rough.</li></ul>	<ul style="list-style-type: none"><li>Check wheels for debris; clear or replace if damaged.</li><li>Reduce the weight of contents.</li><li>Move the box only on smooth, level surfaces.</li></ul>

SPECIFICATIONS

Feature	Detail
Brand	domi outdoor living
Model Number	LNCZ0605-Fay-0515
Capacity	260 Gallons
Material	Resin
Color	Grey
Product Dimensions (L x W x H)	68.11" x 32.28" x 33.86"
Item Weight	112.4 Pounds
Max Weight Capacity (as bench)	660 lbs
Special Features	Built-In Handle, Lockable, Rust Resistant, Waterproof, UV-Resistant, Hydraulic Air Rods
Closure Type	Flip Top

Feature	Detail
Shape	Rectangular



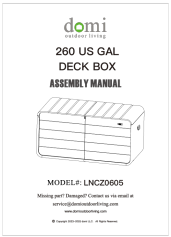
Image: Technical drawing illustrating the length, width, and height measurements of the deck box.

WARRANTY AND SUPPORT

For warranty information, product support, or to inquire about replacement parts, please contact the manufacturer, **domi outdoor living**, or the seller, **Fay outdoor life**, directly through your purchase platform or their official website. Please have your model number (LNCZ0605-Fay-0515) and proof of purchase available when contacting support. For general inquiries, you may also refer to the product page on Amazon: [Domi 260 Gallon Resin Deck Box on Amazon](#)



## Related Documents - LNCZ0605-Fay-0515

	<p><a href="#">Domi Outdoor Living 260 US Gal Deck Box Assembly Manual (Model LNCZ0605)</a></p> <p>Step-by-step assembly instructions for the Domi Outdoor Living 260 US Gallon Deck Box, model LNCZ0605. Includes parts list and detailed guidance for easy construction.</p>
	<p><a href="#">Domi 12'x20' Metal Patio Gazebo with Resin Roof Assembly Manual (LGMZ1721)</a></p> <p>Assembly manual for Domi 12'x20' Metal Patio Gazebo with Resin Roof (LGMZ1721). Provides pre-assembly steps, tools, warnings, parts list, and detailed installation instructions for outdoor use.</p>
	<p><a href="#">Domi 12'x14' Metal Patio Gazebo Assembly Manual (LGMZ1718)</a></p> <p>This assembly manual provides detailed instructions for the Domi 12'x14' Metal Patio Gazebo with Resin Roof (Model LGMZ1718). It covers pre-assembly, safety warnings, step-by-step installation, and parts identification for this outdoor structure, which may include privacy curtains and mosquito netting.</p>
	<p><a href="#">160 US Gal Deck Box Assembly Manual - Model LNCZ0621</a></p> <p>Assembly instructions and parts list for the domi outdoor living 160 US Gal Deck Box, model LNCZ0621. Learn how to assemble your deck box step-by-step.</p>
	<p><a href="#">Domi 12'x18' Metal Patio Gazebo with Resin Roof Assembly Manual LGMZ1720</a></p> <p>Detailed assembly manual for the Domi 12'x18' Metal Patio Gazebo with Resin Roof (Model LGMZ1720). Includes pre-assembly, warnings, parts list, and step-by-step installation instructions.</p>





### [Domi 10'x14' Metal Patio Gazebo with Resin Roof Assembly Manual](#)

Step-by-step assembly instructions for the Domi 10'x14' Metal Patio Gazebo with Resin Roof (Model LGMZ1716). Includes pre-assembly tips, warnings, and detailed diagrams.