

Globlazer F61

Globlazer F61 Gothique XL Cat Tree Instruction Manual

Model: F61 Gothique XL

[Overview](#)[Safety](#)[Contents](#)[Assembly](#)[Usage](#)[Maintenance](#)[Troubleshooting](#)[Specifications](#)[Warranty](#)[& Support](#)

1. PRODUCT OVERVIEW

The Globlazer F61 Gothique XL Cat Tree is a multi-level activity center designed for cats of all sizes, including large breeds. It features a robust structure with multiple platforms, scratching posts, and comfortable resting areas to provide an enriching environment for your feline companions.

This cat tree includes two spacious cat caves, an extra-large padded top perch, and a hanging basket, offering diverse spaces for play, rest, and observation. Seven natural sisal rope scratching posts promote healthy claw maintenance and help protect household furniture.



Image: The Globlazer F61 Gothique XL Cat Tree in a living room setting, showcasing its various levels and features, with several cats interacting with it.

2. SAFETY INFORMATION

Please read and understand all safety instructions before assembly and use to ensure the well-being of your pets and household.

- **Adult Assembly Required:** This product contains small parts and requires adult assembly. Keep children and pets away during the assembly process.
- **Placement:** Place the cat tree on a flat, stable surface. Avoid placing it near windows where cats could fall or near heating vents.

- **Stability Check:** Regularly check the stability of the cat tree. Ensure all screws and connections are tight at least once a month.
- **Anti-Tip Kit:** Utilize the included anti-tip safety straps to secure the cat tree to a wall, especially if you have active or large cats. This significantly enhances stability and prevents accidental tipping.
- **Inspect for Damage:** Periodically inspect the cat tree for any signs of wear, tear, or damage to components like sisal ropes, fabric, or structural parts. Replace damaged parts immediately to prevent injury.
- **Supervision:** While designed for safety, always supervise your pets, especially when they are first introduced to the cat tree.
- **Indoor Use Only:** This product is designed for indoor use. Exposure to outdoor elements can compromise its structural integrity and materials.



Image: A detailed diagram illustrating the dimensions of the Globlazer F61 Gothique XL Cat Tree and a visual guide for installing the anti-tip safety kit.

3. PACKAGE CONTENTS

Before beginning assembly, please ensure all parts are present and undamaged. Refer to the detailed parts list and diagrams provided in your physical instruction manual for specific component identification.

Typical components include:

- Baseboard(s)
- Various platforms and perches (including the extra-large top perch)
- Cat caves/condos
- Sisal-wrapped scratching posts of various lengths
- Hanging basket
- Connecting hardware (screws, bolts, washers, Allen wrench)
- Anti-tip safety straps and wall anchors
- Decorative elements (e.g., hanging toys)

4. ASSEMBLY INSTRUCTIONS

Follow these steps carefully. It is recommended to assemble the cat tree with another person for ease and safety.

1. **Unpack and Identify Parts:** Lay out all components on a clean, soft surface. Match each part to the corresponding number or letter in your physical manual's parts list.
2. **Attach Base Posts:** Secure the lowest scratching posts to the main baseboard using the provided screws and the Allen wrench. Ensure they are firmly tightened.
3. **Install Lower Cat Caves:** Attach the first level of cat caves or platforms to the base posts.
4. **Build Upwards:** Continue to attach subsequent posts, platforms, and cat caves layer by layer, following the numerical or alphabetical sequence in your manual. Ensure each connection is secure before proceeding to the next level.
5. **Attach Top Perch and Basket:** Install the extra-large top perch and the hanging basket according to the instructions.
6. **Secure Anti-Tip Straps:** Once the cat tree is fully assembled, position it in its desired location. Attach the anti-tip safety straps to the designated points on the cat tree and then securely fasten them to a wall stud using the provided wall anchors. This step is crucial for stability.
7. **Final Check:** Double-check all screws and connections to ensure they are tight and the structure is stable. Gently shake the tree to confirm its sturdiness.



2 Spacious Cat Caves

Two spacious cat condos, as a comfortable and leisurely area for cats.



Image: A close-up view of the two spacious cat caves, highlighting their generous size (45x40x35cm) suitable for various cat sizes.



Extra-large Top Perch

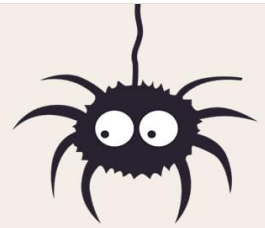


Image: A detailed view of the extra-large top perch (45x40cm), showing its soft, padded surface designed for comfortable resting and observation.

Hanging Basket

Provide a warm, soft spot for cats to lie down and rest or observe their surroundings



Image: A comfortable hanging basket, providing a secure and cozy spot for cats to relax or observe their surroundings.

5. OPERATING INSTRUCTIONS (USAGE)

The Globlazer F61 Gothique XL Cat Tree is designed to be an interactive and comfortable space for your cats. No specific 'operation' is required beyond providing access to your pets.

- **Encourage Exploration:** Place treats or toys on different levels to encourage your cat to explore the entire structure.
- **Scratching Posts:** The seven sisal-wrapped posts are intended for scratching. Encourage your cat to use them by gently guiding their paws or using catnip. This helps maintain claw health and diverts scratching from furniture.
- **Resting Areas:** The cat caves, top perch, and hanging basket offer various comfortable spots for napping and relaxation.
- **Play:** The multi-level design and hanging toys provide opportunities for climbing, jumping, and playful interaction.

7 Cat Scratching Posts

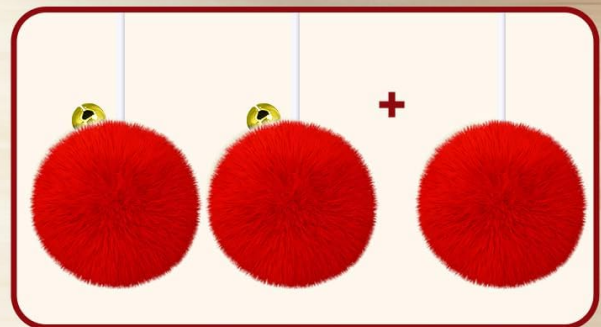


Image: A cat actively using one of the seven natural sisal scratching posts, demonstrating the intended use for claw maintenance.



Image: A diagram highlighting the sensible and exciting routes cats can take to navigate the multi-level structure of the cat tree.

6. MAINTENANCE

Regular maintenance will extend the life of your cat tree and ensure a hygienic environment for your pets.

- **Cleaning:** Clean with a dry or damp cloth as needed. For deeper cleaning, use a pet-safe cleaner on fabric surfaces. Avoid harsh chemicals that could be harmful to your cats.
- **Vacuuming:** Regularly vacuum the plush surfaces to remove loose fur and dust.
- **Sisal Rope:** The sisal ropes are designed to be scratched. Over time, they will fray. This is normal. If they become excessively worn, they may need to be replaced or re-wrapped.
- **Structural Integrity:** As mentioned in the safety section, check all screws and connections monthly and tighten if necessary.
- **Storage:** If storing the cat tree, disassemble it carefully and keep it in a dry, indoor location to prevent material degradation.

7. TROUBLESHOOTING

Here are solutions to common issues you might encounter:

- Issue: Cat tree feels wobbly.**
Solution: Ensure all screws are tightened. Verify the base is on a flat surface. Re-check the anti-tip straps and ensure they are securely anchored to the wall.
- Issue: My cat isn't using the scratching posts.**
Solution: Try sprinkling catnip on the sisal posts. Gently guide your cat's paws to the posts. Ensure the cat tree is in a prominent location your cat frequents.
- Issue: Parts are missing or damaged upon arrival.**
Solution: Contact Globlazer customer support immediately with your purchase details and a description of the issue.
- Issue: Fabric or sisal is heavily worn.**
Solution: While normal wear occurs, excessively worn parts can be a safety hazard. Contact customer support for potential replacement parts or consider replacing the unit if structural integrity is compromised.

8. PRODUCT SPECIFICATIONS

Brand	Globlazer
Model Number	F61
Color	Gothique (Black/Red)
Size	XL
Dimensions (L x W x H)	72 x 45 x 155 cm (28.3 x 17.7 x 61.4 inches)
Weight	18 Kilograms (39.7 lbs)
Material	Engineered Wood, Sisal Ropes, Plush Fabric
Recommended Species	Large Breeds
Number of Levels	3
Specific Uses	Jumping, Scratching, Resting
Care Instructions	Clean with dry or damp cloth. Store indoors or in a dry place.






9. WARRANTY AND SUPPORT

Globlazer products are manufactured to high-quality standards. For specific warranty information, please refer to the documentation included with your purchase or visit the official Globlazer website. If you have any questions, require assistance with assembly, or need to report missing/damaged parts, please contact Globlazer customer support:

- Online Support:** Visit the Globlazer official website for FAQs and contact forms.
- Email:** Refer to your purchase invoice or product packaging for customer service email address.
- Phone:** Refer to your purchase invoice or product packaging for customer service phone number.

Please have your model number (F61) and purchase date ready when contacting support.

Related Documents - F61

	<p>Globlazer Cat Tree US-0017201 Assembly and Safety Guide</p> <p>Comprehensive assembly instructions and safety guidelines for the Globlazer Cat Tree model US-0017201. Learn how to build and safely use your cat's new favorite accessory.</p>
	<p>Globlazer US-0014901 Cat Tree Assembly Instructions and Guide</p> <p>Detailed assembly instructions, guidelines, and parts list for the Globlazer US-0014901 Cat Tree. Learn how to safely build and use your cat's new climbing tower.</p>
	<p>Globlazer US-0013401 Cat Tree Assembly Instructions and Guide</p> <p>Detailed assembly instructions and safety guidelines for the Globlazer US-0013401 Cat Tree. Includes parts list and step-by-step diagrams for easy setup of your pet's new favorite furniture.</p>
	<p>Globlazer Cat Tree US-0015001 Assembly Manual and Safety Guide</p> <p>Comprehensive assembly instructions and safety guidelines for the Globlazer Cat Tree model US-0015001. Learn how to set up, maintain, and ensure the safe use of your cat's new play structure.</p>
	<p>Globlazer US-0017001 Cat Tree Assembly Instructions</p> <p>Detailed assembly instructions and safety guidelines for the Globlazer US-0017001 Cat Tree. Learn how to build this multi-level cat condo for your feline companions.</p>