

## Manuals+

[Q & A](#) | [Deep Search](#) | [Upload](#)

manuals.plus /

- › [Edifier](#) /
- › [Edifier S300 Hi-Fi Tabletop Speaker User Manual](#)

## Edifier S300

# Edifier S300 Hi-Fi Tabletop Speaker

Model: S300 - User Manual

## INTRODUCTION

This manual provides detailed instructions for the setup, operation, and maintenance of your Edifier S300 Hi-Fi Tabletop Speaker. Please read this manual thoroughly before using the product to ensure proper functionality and to maximize your listening experience. Keep this manual for future reference.



The Edifier S300 Hi-Fi Tabletop Speaker, showcasing its elegant black walnut finish and front grille.

## IMPORTANT SAFETY INSTRUCTIONS

- Read these instructions carefully.


- Keep these instructions for future reference.
- Heed all warnings.
- Follow all instructions.
- Do not use this apparatus near water.
- Clean only with a dry cloth.
- Do not block any ventilation openings. Install in accordance with the manufacturer's instructions.
- Do not install near any heat sources such as radiators, heat registers, stoves, or other apparatus (including amplifiers) that produce heat.
- Protect the power cord from being walked on or pinched, particularly at plugs, convenience receptacles, and the point where they exit from the apparatus.
- Only use attachments/accessories specified by the manufacturer.
- Unplug this apparatus during lightning storms or when unused for long periods of time.
- Refer all servicing to qualified service personnel. Servicing is required when the apparatus has been damaged in any way, such as power-supply cord or plug is damaged, liquid has been spilled or objects have fallen into the apparatus, the apparatus has been exposed to rain or moisture, does not operate normally, or has been dropped.

## WHAT'S IN THE BOX

Upon unpacking, please verify that all items listed below are present and in good condition:

- S300 Speaker × 1
- Power Cable × 1
- USB Cable × 1
- 3.5mm-to-3.5mm Audio Cable × 1
- Remote Control × 1
- AAA Battery × 2
- Quick Start Guide × 1
- Important Safety Instructions × 1

### Specifications



<b>Total Output Power (RMS)</b>	Treble 15W × 2 Mid-bass 50W	<b>Codecs</b>	SBC, LDAC, and ALAC (AirPlay mode only)
<b>Driver units</b>	Treble: 1.25" titanium dome tweeter with neodymium magnets × 2 Mid-bass: 5.5" long-throw aluminum diaphragm mid-bass driver	<b>Input Sensitivity</b>	AUX: 500 ± 50mV USB: 550 ± 50mFFS Bluetooth: 550 ± 50mFFS
<b>Frequency Response</b>	48Hz ~ 40kHz	<b>Dimensions (W × H × D)</b>	351mm × 204mm × 231mm
<b>Signal-to-Noise Ratio</b>	≥ 85dB (A)	<b>Net Weight</b>	6.23kg
<b>Bluetooth</b>	V5.4	<b>Audio Inputs</b>	Bluetooth, Wi-Fi (Apple AirPlay), USB-C, AUX

An overview of all items included in the Edifier S300 package.

## PRODUCT OVERVIEW

### Front Panel Controls and Indicators

# Dual Control: Buttons and Remote

Easily adjust volume and playback using onboard knobs or remote control.



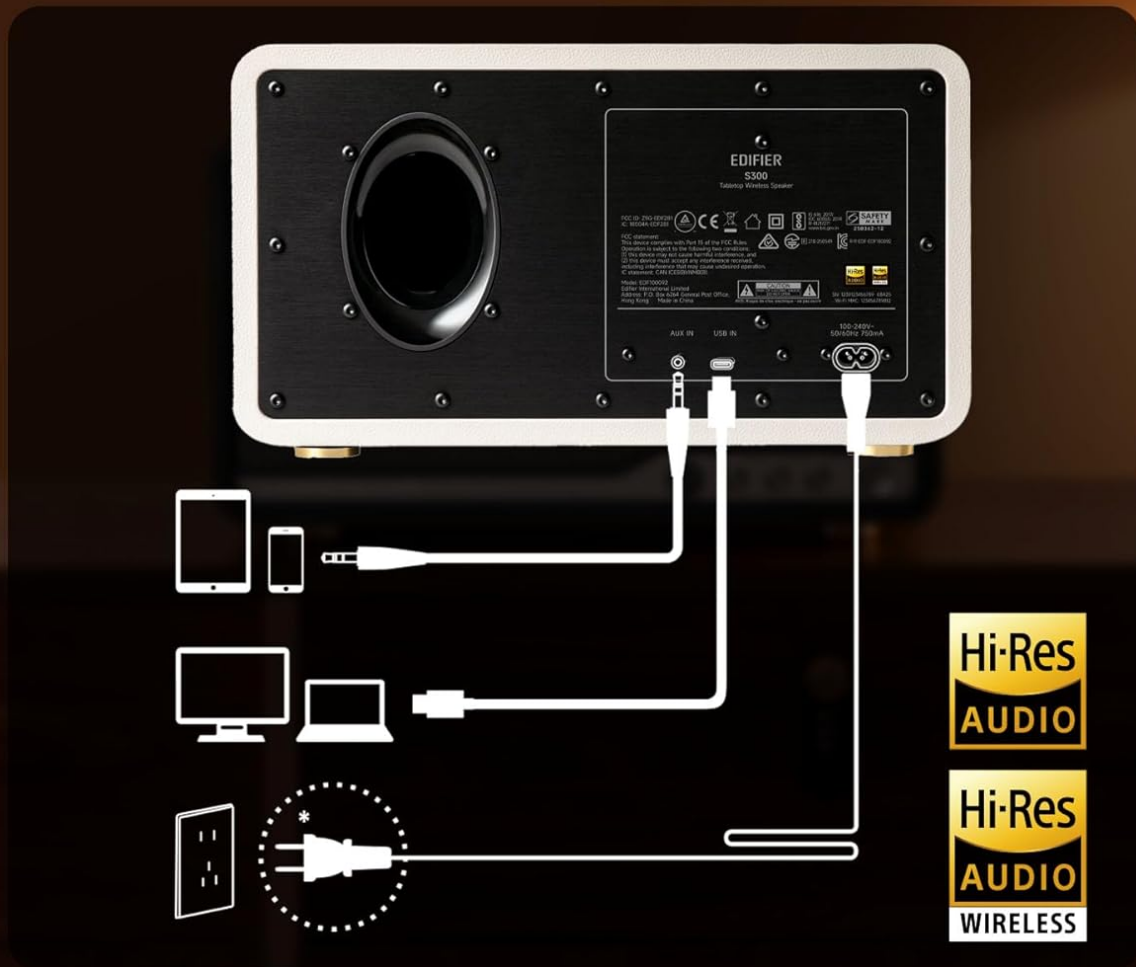
Detailed view of the speaker's control knobs and the included remote control.

- **Volume/Input Selector Knob:** Rotate to adjust volume. Press to cycle through input sources (Bluetooth, AirPlay, USB-C, AUX).
- **Playback Controls:** Buttons for Play/Pause, Previous Track, Next Track (functionality varies by input source).
- **Status Indicator Light:** Displays current input mode and connection status.

### Rear Panel Connections

# Versatile USB-C and AUX Inputs

Enjoy flexible wired connectivity with USB-C port and classic AUX input.



The rear panel of the Edifier S300, highlighting its various connectivity options.

- **USB-C Input:** For connecting to computers or other USB-C audio sources.
- **AUX Input:** Standard 3.5mm audio jack for connecting to analog audio devices.
- **Power Input:** Connect the provided power cable here.

## SETUP

### Speaker Placement

For optimal sound performance, place the Edifier S300 on a stable, flat surface. Ensure there is adequate space around the speaker for proper ventilation. Placing the speaker near a wall can enhance bass response, but avoid placing it directly in a corner, which might lead to boomy or unclear bass.



The dimensions of the Edifier S300 speaker, useful for placement planning.

## Power Connection

1. Connect the power cable to the power input port on the rear of the speaker.
2. Plug the other end of the power cable into a wall outlet.
3. The speaker will power on automatically or can be turned on using the power button on the remote control.

## OPERATING INSTRUCTIONS

### Input Source Selection

The S300 supports multiple audio input sources. You can switch between them using the volume/input selector knob on the front panel or the dedicated input buttons on the remote control.

- **Bluetooth:** For wireless audio streaming from compatible devices.
- **AirPlay 2:** For seamless multi-room audio and lossless streaming from Apple devices.
- **USB-C:** For direct digital audio connection to computers or other USB-C sources.
- **AUX:** For connecting traditional analog audio devices using a 3.5mm cable.

## Bluetooth Pairing



The Edifier S300 supports dual Bluetooth device pairing for convenient switching.

1. Select Bluetooth input on the speaker. The status indicator will flash, indicating pairing mode.
2. On your device (smartphone, tablet, computer), enable Bluetooth and search for "EDIFIER S300".
3. Select "EDIFIER S300" to pair. Once connected, the indicator light will become solid.
4. The S300 supports LDAC for high-resolution wireless audio on compatible Android 8.0+ devices.

5. It also supports multi-device pairing, allowing two devices to be connected simultaneously.

## AirPlay 2 Setup (for Apple Devices)

# AirPlay 2 Streaming with ALAC Quality

Multi-room sync for wireless lossless audio from iOS, Apple TV, or iTunes.



AirPlay 2 enables seamless multi-room audio and lossless streaming across your home.

1. Ensure your S300 speaker is connected to the same Wi-Fi network as your Apple device.
2. On your iOS device, open Control Center, tap the AirPlay icon, and select "EDIFIER S300".
3. For multi-room audio, select multiple AirPlay 2 compatible speakers from the AirPlay menu.
4. For stereo pairing, use the EDIFIER Home App to configure two S300 speakers as left and right channels.

## Using the EDIFIER Home App

# EDIFIER Home App Support

Download the EDIFIER Home App to unlock enhanced features.



EDIFIER Home



The EDIFIER Home App provides enhanced control and features for your S300 speaker.

Download the EDIFIER Home App from your device's app store to unlock enhanced features and control options for your S300 speaker. The app allows you to:

- Connect your speaker to a Wi-Fi network.
- Switch between input sources effortlessly.
- Control playback with ease.
- Customize sound effects to suit your preferences.
- Access the digital user manual anytime.

## MAINTENANCE

- **Cleaning:** Use a soft, dry cloth to clean the speaker's surface. Do not use liquid cleaners or aerosol sprays.
- **Ventilation:** Ensure the ventilation openings are not blocked to prevent overheating.
- **Storage:** If storing the speaker for an extended period, unplug it from the power outlet and store it in a cool, dry place.

## TROUBLESHOOTING


Problem	Possible Cause	Solution
No sound	Power not connected; incorrect input source selected; volume too low.	Ensure power cable is securely plugged in. Select the correct input source. Increase volume.
Bluetooth connection fails	Speaker not in pairing mode; device too far; interference.	Ensure speaker is in Bluetooth pairing mode. Move device closer to speaker. Avoid obstacles. Try re-pairing.
AirPlay 2 connection issues	Speaker and device on different Wi-Fi networks; network instability.	Verify both speaker and Apple device are on the same Wi-Fi network. Restart router and speaker.
Distorted sound	Volume too high; audio source quality is poor.	Reduce volume. Check audio source quality.

## SPECIFICATIONS

### EDIFIER Home App

Download the EDIFIER Home App to unlock enhanced features:

- Connect your speaker to a Wi-Fi network
- Switch between input sources effortlessly
- Control playback with ease
- Customize sound effects to suit your preferences
- Access the digital user manual anytime



EDIFIER Home

Detailed technical specifications of the Edifier S300 speaker.

Feature	Detail
Total Output Power (RMS)	Treble 15W × 2, Mid-bass 50W

Feature	Detail
Driver Units	1.25" titanium dome tweeter with neodymium magnets × 2, 5.5" long-throw aluminum diaphragm mid-bass driver
Frequency Response	48Hz ~ 40kHz
Signal-to-Noise Ratio	≥ 85dB (A)
Bluetooth Version	V5.4
Codecs	SBC, LDAC, and ALAC (AirPlay mode only)
Input Sensitivity	AUX: 500 ± 50mV, USB: 550 ± 50mFFS, Bluetooth: 550 ± 50mFFS
Dimensions (W × H × D)	351mm × 204mm × 231mm (13.82" × 8.03" × 9.09")
Net Weight	6.23kg (13.73 lbs)
Audio Inputs	Bluetooth, Wi-Fi (Apple AirPlay), USB-C, AUX

## WARRANTY AND SUPPORT

Edifier products are designed and manufactured to the highest quality standards. For information regarding warranty coverage, please refer to the warranty card included in your product packaging or visit the official Edifier website.


For technical support, troubleshooting assistance, or service inquiries, please contact Edifier customer support through their official website or the contact information provided in your product documentation.

**Official Edifier Website:** [www.edifier.com](http://www.edifier.com)

© 2025 Edifier. All rights reserved.  
This manual is subject to change without prior notice.


### Related Documents - S300



花再 · EDIFIER



光冲磁音箱 NEW-X PRO  
多媒体音箱

1. 物品名称







● 正解



- #### 6. 开机/待机/输入模式切换

2. 曲轴臂颈/通状-臂件/激越结果8. 灯效范围/灯光角度调节

9. USB-C2充电接口  
10. USB-C1充电接口  
11. USB-A充电接口

● 蓝牙输入



注意:

1. 当建立蓝牙连接时, 如需输入PIN码, 请输入“0000”。
2. 为保证您的隐私, 产品出厂时所有蓝牙连接, 请确保您的设备必须使用A2DP、HSP/FTP协议。

● **ADDENDUM**



● 声音输入



注意:

## ● 时钟使用

时间和校对策略：首次开机或电源断开超过七天，当需要连接 Edifier Connect App 进行时钟校对。

● 氧化还原



USB-A 充電端子:  
65W Max 5V = 5A, 9V = 3A, 12V = 3A, 20V = 3A

USB-C 充電端子:  
65W Max 5V = 5A, 9V = 3A, 12V = 3A, 15V = 3A, 20V = 3.25A

USB-C 充電端子:  
65W Max 5V = 5A, 9V = 3A, 12V = 3A, 15V = 3A, 20V = 3.25A

USB-C to USB-C 充電端子: 45W Max = 20W Max  
USB-C to USB-A 充電端子: 40W Max = 20W Max  
USB-A to USB-C 1 充電端子: 15W Max  
USB-A to USB-C 1 充電端子: 車載充電: 15W Max = 40W Max

注意:

1. 需要在安装电源开关打开, 电源线接通的情况下, 内置的固定频率开关电源才可工作。
2. 当使用大于5A电流的开关电源时, 请接大于4.5A的电源线, 以便使用。

- 使用手机的扫描“Edifier Connect”二维码，选择下载安装；
- 将手机的蓝牙设置打开，搜索并连接名称为“漫步者-蓝牙 H2W-X PRO”的设备产品；
- 打开Edifier Connect App，将自动搜索到的设备设置所需，即可通过App选择播放。

Detailed user manual for the Edifier NEW-X PRO smart speaker, covering setup, Bluetooth, AUX, USB, AirPlay connectivity, Edifier Connect App integration, power specifications, and troubleshooting.

[illegible]

Figure 1 displays a sequence of 16 small images arranged in a 4x4 grid, illustrating the progression of a skin lesion over time. The images are labeled with numbers 1 through 16 in the bottom right corner of each image. The progression shows the lesion growing in size and becoming more irregular and darker in color.

EDIFIER®

ES60

Portable Bluetooth Speaker

— Manual —

EZ1

1. EDIFIER Connect mobile app

With this app, you can:

control play from the Bluetooth device directly.

control the master volume.

enable sound effects or customize EQ.

regulate the frequency, and more functions.

EDIFIER Connect app

Get it on the App Store

GET IT ON Google Play

Download EDIFIER Connect app

1. With your smart device, scan the QR code on the quick start guide in the package.  
2. You can also search for "EDIFIER Connect" in Apple App Store iOS devices or Google Play Android devices.  
3. Download and install the app.

How to use the app

1. Connect your smart device with the speaker via Bluetooth.  
2. In Bluetooth mode, open EDIFIER Connect app on your smart device.  
3. Tap the menu to settings and playback screen.

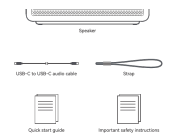
2. What's in the box?

## EDIFIER S300 Tabletop Wireless Speaker: Quick Start Guide & Setup

A concise guide to setting up and using the EDIFIER S300 Tabletop Wireless Speaker, covering connections, Bluetooth, AirPlay, specifications, power saving, and app integration.

# Edifier S360DB Active Speaker System User Manual

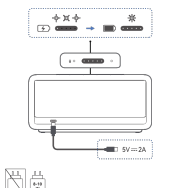
Comprehensive user manual for the Edifier S360DB Active Speaker System, detailing setup, connections (Optical, Coaxial, PC, AUX, Bluetooth), remote control functions, subwoofer pairing, specifications, troubleshooting, and safety guidelines.



Note

- Images are for illustrative purpose only and may differ from the actual product.
- For the correct product use and safety, please refer to the safety instructions and specifications in the user manual and safety instructions.
- If any difference is found, the actual product prevails.

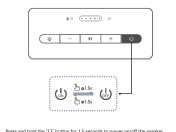
### 3. Charging



Note

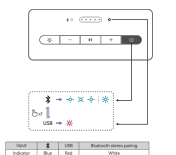
- Power input: 5V=2A
- \* If the external power supplied by the safety equipment to charge.
- \* If the external power supplied by the safety equipment to charge.
- \* If the external power supplied by the safety equipment to charge.

### 4. Power on/off

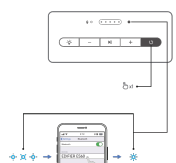


Press and hold the "P" button for 15 seconds to power on/off the speaker.

### 5. Source selection



### 6. Bluetooth connection



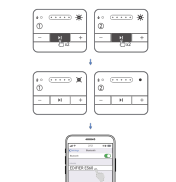
This speaker supports the dual channel connection of two Bluetooth devices (limited to 2 devices).

- Press the "P" button to switch to Bluetooth input mode. If no device is connected, the speaker will auto enter Bluetooth pairing mode. LED lighting is blue. If a device is connected, the "P" button for 15 seconds.
- Press the "P" button to switch to Bluetooth input mode. If no device is connected, the speaker will auto enter Bluetooth pairing mode. LED lighting is blue. If a device is connected, the "P" button for 15 seconds.
- Press the "P" button to switch to Bluetooth input mode. If no device is connected, the speaker will auto enter Bluetooth pairing mode. LED lighting is blue. If a device is connected, the "P" button for 15 seconds.

Note

- The mode for connection is "BT" if needed.
- To stop all Bluetooth functions of this product, make sure that your audio device supports BT, and that your device is in Bluetooth mode.
- If the device is not in Bluetooth mode, the speaker will auto enter Bluetooth pairing mode. The blue indicator will blink slowly. In this mode, if no device is connected, the speaker will auto enter Bluetooth pairing mode. LED lighting is blue. If a device is connected, the "P" button for 15 seconds.
- If the device is not in Bluetooth mode, the speaker will auto enter Bluetooth pairing mode. LED lighting is blue. If a device is connected, the "P" button for 15 seconds.

### 7. Bluetooth stereo pairing



For two ES60 speakers to play stereo sound.

- Insert the "P" button on the first ES60. The white LED will be in breathing pattern.
- Insert the "P" button on the second ES60. The white LED will be in breathing pattern.
- Once the connection is established, the white LED on the first ES60 will be on, and the white LED on the second ES60 will light up.
- Connect the first ES60 to your Bluetooth device and start playing.
- To end the stereo mode, double press the "P" button.

Note

- The first ES60 will work as the master speaker. You can control play on the first ES60.
- The first ES60 will deliver the right channel audio and the second one is for the left channel audio.

### 8. USB connection



Note

- The following operating systems support USB audio streaming: Windows 11, Windows 10, Windows 8, and Windows 7.
- A USB audio streaming cable, which is not supported. To adjust the volume, adjust on the speaker and your device separately.

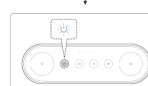
### 9. Play control



## Edifier ES60 Portable Bluetooth Speaker User Manual

User manual for the Edifier ES60 portable Bluetooth speaker, detailing its features, setup, Bluetooth connectivity, stereo pairing, USB connection, playback controls, troubleshooting, and specifications.

<div data-bbox="151 73 279 179"> </div> <div data-bbox="132 217 300 235"> <h3>10. Phone calls</h3> </div> <div data-bbox="151 253 279 378"> </div> <div data-bbox="132 416 300 434"> <h3>11. Light effects</h3> </div> <div data-bbox="151 452 279 577"> </div> <div data-bbox="132 604 300 622"> <h3>12. Specifications</h3> </div> <div data-bbox="132 638 300 696"> <p>Total rated power: RMS: 5 W + 5 W + 10 W Frequency response: 60 Hz-20 kHz Declaration for EU Frequency Band: 2.402 GHz - 2.480 GHz RF Power Output: 100 mW (class 2) There is no restriction of use.</p> </div> <div data-bbox="132 730 300 748"> <h3>13. Troubleshooting</h3> </div> <div data-bbox="132 763 300 1025"> <p><b>Cannot connect to your Bluetooth device</b></p> <ul style="list-style-type: none"> <li>Make sure that the distance between the product and your Bluetooth device is less than 10 meters and there are no obstacles between them.</li> <li>Make sure that no device is connected to the product via Bluetooth.</li> <li>Make sure that the product is in Bluetooth pairing mode. First, manually switch it to this mode.</li> <li>Restart the product, enable Bluetooth function on your Bluetooth device, and then try again.</li> <li>Reset the product to factory settings and try again.</li> </ul> <p><b>No power</b></p> <ul style="list-style-type: none"> <li>Make sure that the power cable is properly connected.</li> <li>Make sure that the power supply is not disconnected.</li> </ul> <p><b>No sound</b></p> <ul style="list-style-type: none"> <li>Make sure that this product and your device is properly connected.</li> <li>Make sure that the correct audio input device is selected.</li> <li>Make sure that the playback is not paused.</li> <li>Adjust the volume of this product and your device.</li> </ul> <p><b>Noise coming from speakers</b></p> <ul style="list-style-type: none"> <li>EDIFIER speakers generate little noise, while the background noise of some audio devices are too high. Please hold speakers closer and turn the volume up. If it would not be loud at 1 meter away from the speaker, there is no problem with this product.</li> </ul> <p>To learn more about EDIFIER, please visit our official site. For EDIFIER warranty queries, please visit the nearest country page on <a href="http://www.edifier.com">www.edifier.com</a> and in case the website does not display the correct page, please visit the nearest country page on <a href="http://www.edifier.com">www.edifier.com</a>. Please visit our official site (English) or <a href="http://www.edifier.com">www.edifier.com</a> (Spanish/Portuguese) for local contact information.</p> </div>	
<div data-bbox="132 1093 279 1265"> <p><b>EDIFIER®</b></p> <p><b>D12</b> Stereo Bluetooth Speaker</p> <p><small>For more information, please visit our official site: <a href="http://www.edifier.com">www.edifier.com</a></small></p> </div>	<div data-bbox="343 1108 1476 1265"> <p><a href="#">Edifier D12 Stereo Bluetooth Speaker User Manual</a></p> <p>Comprehensive user manual for the Edifier D12 Stereo Bluetooth Speaker, covering safety instructions, box contents, illustrations, remote control operation, connection methods (AUX, Line-in, Bluetooth), specifications, and troubleshooting.</p> </div>
<div data-bbox="132 1328 279 1411"> <p><b>EDIFIER®</b></p> <p><b>ES300</b> Tabletop Wireless Speaker</p> </div> <div data-bbox="151 1433 279 1523"> </div> <div data-bbox="183 1545 247 1568"> <p>— Manual —</p> </div> <div data-bbox="132 1601 300 1624"> <h3>EN</h3> </div> <div data-bbox="132 1624 300 1646"> <h4>1. EDIFIER Home app</h4> </div> <div data-bbox="167 1646 263 1702"> </div> <div data-bbox="132 1713 300 1780"> <p><b>EDIFIER Home app</b></p> <p>Once Home app Bluetooth function is enabled on your device.</p> <ol style="list-style-type: none"> <li>1. With your smart device, scan the QR code on the quick start guide or the packaging.</li> <li>2. Scan the QR code to search for "EDIFIER Home" in Apple App Store (iOS device) or Google Play (Android device).</li> <li>3. Download and install the app.</li> <li>4. Connect your smart device with the speaker via Bluetooth.</li> <li>5. In Bluetooth mode, open EDIFIER Home App on your smart device.</li> <li>6. Tap the icon for settings and playback control.</li> </ol> </div> <div data-bbox="132 1814 300 1836"> <h4>2. What's in the box?</h4> </div> <div data-bbox="151 1848 279 1926"> </div> <div data-bbox="199 1926 231 1937"> <p>Speaker</p> </div> <div data-bbox="167 1948 263 1971"> </div> <div data-bbox="167 1971 263 1993"> <p>Power cable</p> </div> <div data-bbox="167 2004 263 2027"> </div> <div data-bbox="167 2027 263 2049"> <p>3.5mm to 3.5mm audio cable</p> </div> <div data-bbox="167 2060 263 2083"> </div> <div data-bbox="167 2083 263 2105"> <p>USB connecting cable</p> </div> <div data-bbox="167 2116 263 2139"> </div> <div data-bbox="167 2139 263 2161"> <p>Quick start guide</p> </div> <div data-bbox="167 2172 263 2195"> </div> <div data-bbox="167 2195 263 2217"> <p>Important safety instructions</p> </div> <div data-bbox="132 2094 300 2139"> <p><b>Note</b></p> <ul style="list-style-type: none"> <li>Images are for illustrative purposes only and may differ from the actual product.</li> <li>The included USB connecting cables for audio connectivity do not need to be removed.</li> <li>For the best of technical improvement and system upgrade, information and specifications are subject to change without notice.</li> <li>If any difference is found, the actual product prevails.</li> </ul> </div>	



1. Press the **OK** button to switch to Bluetooth input mode. If no device is connected, the speaker will auto enter Bluetooth pairing mode (LED blinking in blue). If not, press and hold the **M** button for 1.5 seconds.
2. On your device, select "EDIFIER E330P" in its Bluetooth device list to connect, and the blue LED will be steady lit when the connection is established.
3. To disconnect from the current Bluetooth device, press and hold the **M** button

1. Connect to a device, and then press and hold the "H" button for 1.5 seconds. LED blinking in blue.
2. On the second device, select "EDRIR E5300" in its Bluetooth device list to connect and the blue LED will be steady lit when the connection is established.
3. On the first device, select "EDR E5300" in its Bluetooth device list to reconnect.
4. Pause or stop playback on the current Bluetooth device before streaming audio.

**Notes:**

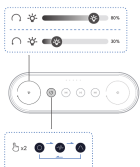
- Pin code for connection is "0005" if needed.
- To enjoy all Bluetooth functions of this speaker, make sure that your audio source device supports A2DP and AVCP profiles.
- If no device is connected in 10 minutes, the speaker will switch to Bluetooth-hold mode. The blue indicator will blink slowly. In this mode, (1) new devices cannot find the speaker, but (2) for a device that exists in the pairing-record of this speaker you can select "E000 E5000" from its Bluetooth device list to re-connect. To exit from Bluetooth-hold mode, press "C" button on the speaker.
- After switched to Bluetooth link, the speaker will reconnect to the last connected devices automatically.



Comprehensive user manual for the Edifier ES300 tabletop wireless speaker, covering setup, features like Bluetooth and AirPlay, specifications, and troubleshooting. Learn how to connect, control playback, and use the EDIFIER Home app.

In AUX and USB modes, volume sync is not supported. To adjust the volume, adjust on the speaker and your device separately.

## 10. Light effects

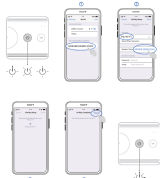


## 11. Apple AirPlay



## 5408

- Make sure that your device is connected to your Wi-Fi network before connecting to the speaker.
- Make sure that Bluetooth function is enabled on your device.
- Methods 1, 2, and 3 are applicable for Apple devices. After connected, the following devices can stream audio to the speaker via Apple AirPlay:
  - (1) Mac or PC with iTunes 12.8 or later;
  - (2) iPhone, iPad, and iPod touch with iOS 11.4 or later;
  - (3) Apple TV 4K or Apple TV (4th Generation) with tvOS 11.4 or later;
  - (4) Other devices that support AirPlay.
- Method 4 is applicable for Android devices. After being connected, you can use your



Method 1: Apple WAC (Wireless Accessory Configuration)

1. Press the "C" button on the speaker to switch to AirPlay mode manually.
2. Make sure that the volume is not set to 0, and then press and hold the "M" button on the speaker for 1.5 seconds (white LED blinking rapidly).
3. Access the WLAN setting on your smart device.
4. Select "E2018R-E3300 xxx" from the AirPlay speaker list to start the AirPlay setup.
5. Follow the on-screen instructions to complete the setup (white LED steady lit).

5. Follow the on-screen instructions to complete the setup (white LED steady lit).

**Method 2: Apple Home App**

1. Press the "⏮" button on the speaker to switch to AirPlay mode manually.
2. Make sure that the volume is not set to 0, and then press and hold the "⏮" button on the speaker for 1.5 seconds (white LED blinking rapidly).
3. Open the Apple Home App on your smart device.
4. Tap "+" and then select "Add or Scan Accessory".
5. Follow the on-screen instructions to complete the setup (white LED steady lit).

- Follow the on-screen instructions to complete the setup (white LED steady 9).
- Method 3: EDIFIER Home App**
  - Press the "C" button on the speaker to switch to AirPlay mode manually.
  - Make sure that the volume is not set to 0, and then press and hold the "36" button on the speaker for 1.5 seconds (white LED blinking rapidly).
  - Open the EDIFIER Home App on your smart device.
  - Tap "+" behind "Devices" and then select "EDIFIER ES300B".
  - Follow the on-screen instructions to complete the setup (white LED steady 9).

**Note**  
To disconnect the speaker from the current network, set the volume to 0, and then press and hold the "M" button on the speaker for 1.5 seconds (white LED-blinking rapidly).

## 12. Specifications

Total output power (90dB): Treble: 15W+15W, Mid-range and bass: 30W  
Frequency response: 55Hz-40kHz

Declaration for EU  
Frequency Band (Bluetooth): 2.402GHz ~ 2.480GHz  
Frequency Band (Wi-Fi): 2.400GHz ~ 2.4835GHz, 5.15GHz ~ 5.25GHz

RF Power Output (Bluetooth): ≤10 dBm (EPP)

## 13. Troubleshooting

Cannot connect to your Bluetooth device

- Make sure that the distance between this product and your Bluetooth device is less than 30 meters and there are no obstacles between them.
- Make sure that no device is connected to this product via Bluetooth.
- Make sure that this product is in Bluetooth pairing mode. If not, manually switch it to this mode.
- Restart this product, enable Bluetooth function on your Bluetooth device, and repeat the pairing process.

## The second

- Make sure that this product is powered on.
- Make sure that this product and your device is properly connected.
- Make sure that the playback is not paused.
- Make sure that this product and your device are not muted.
- Increase the volume of this product and your device.

Noise coming from speakers

• EDIFIER speakers generate little noise, while the background noise of some audio devices are too high. Please unplug audio cables and turn the volume up. If no sound can be heard at 1 meter away from the speaker, there is no problem with this product.

To learn more about COFEB, please visit [www.cofeb.com](http://www.cofeb.com).

For ECDIFER warranty queries, please visit the relevant country page on [www.edifier.com](http://www.edifier.com) and review the section titled Warranty Terms.  
USA and Canada: [service@edifier.ca](mailto:service@edifier.ca)  
South America: Please visit [www.edifier.com](http://www.edifier.com) (English) or [www.edifierla.com](http://www.edifierla.com) (Spanish/Portuguese) for local contact information.