

AULA F99 Pro

AULA F99 Pro Wireless Mechanical Keyboard User Manual

Model: F99 Pro

INTRODUCTION

This manual provides detailed instructions for the AULA F99 Pro Wireless Mechanical Keyboard. Please read this guide thoroughly to ensure proper setup, operation, and maintenance of your device. This keyboard features multiple connection modes, hot-swappable switches, and customizable RGB lighting, designed for both productivity and gaming.



Image: The AULA F99 Pro Wireless Mechanical Keyboard in white, showcasing its full layout and RGB backlighting.

WHAT'S IN THE BOX

- AULA F99 Pro Wireless Mechanical Keyboard

- Keycap/Switches Puller x1
- USB Cable (Type-C)
- Dust Cover x1
- Extra Replacement Switches x 2

PRODUCT OVERVIEW

The AULA F99 Pro is engineered with several advanced features to enhance user experience:

- **Multi-Device Connectivity:** Supports BT5.0, 2.4GHz wireless, and USB-C wired modes. Connects to up to five devices simultaneously.
- **Hot-Swappable Design:** Allows for easy replacement of 3-pin/5-pin switches without soldering.
- **Gasket Structure:** Features an advanced gasket-mounted design with integrated silicone pad and PCB single key slotting for improved typing feel and reduced noise.
- **Pre-lubed Linear Switches:** Equipped with quiet, pre-lubed switches for a smooth and responsive typing experience.
- **RGB Backlighting:** Offers 16 RGB lighting effects and supports macro customization via driver software.
- **Multi-Function Control Knob:** A dedicated knob for switching between backlight and multimedia modes, controlling brightness, volume, and lighting effects.
- **PBT Keycaps:** Side-printed PBT keycaps provide durability, resistance to fading, and a soft touch.
- **High-Capacity Battery:** Built-in 8000mAh battery for extended wireless use.

AULA F99 PRO

Silent Mechanical Keyboard



BT5.0/2.4G/Wired



Gasket-Structure



Pre-lubed Silent Switches



RGB Backlit



8000mAh Battery



Side-engraved PBT Keycaps



Hot Swappable



96% Layout with Knob



Image: An overview of the AULA F99 Pro's key features, including BT5.0/2.4G/Wired connectivity, Gasket-Structure, Pre-lubed Silent Switches, RGB Backlit, 8000mAh Battery, Side-engraved PBT Keycaps, Hot Swappable, and 96% Layout with Knob.

SETUP

1. Connection Modes

The AULA F99 Pro supports three connection methods:

- **Bluetooth (BT5.0):** Ideal for connecting to multiple devices wirelessly.
- **2.4GHz Wireless:** Uses a USB dongle for a stable wireless connection.
- **USB-C Wired:** Connects directly via the included USB-C cable, also charges the keyboard.

To switch between modes, use the FN + key combination or the side button as indicated in the keyboard's layout. The keyboard can connect to PCs, laptops, tablets, gaming consoles, and mobile phones.

THREE CONNECTION MODES

BT5.0/2.4Ghz/USB-C Wired

Support multiple devices and system



Image: The AULA F99 Pro keyboard demonstrating its three connection modes: Bluetooth 5.0, 2.4GHz wireless, and USB-C wired, compatible with various devices like Switch, Xbox, PlayStation, PC, Laptop, Tablet, and Phone.

2. Battery Charging

The keyboard features a built-in 8000mAh battery. To charge, connect the keyboard using the provided USB-C cable to a power source. Refer to the charging instructions in the manual for optimal battery life maintenance.

8000mAh High-capacity Battery

Battery Life: About 53 hours (Backlit ON)
About 400 hours (Backlit OFF)



Image: A close-up view highlighting the 8000mAh high-capacity battery of the AULA F99 Pro keyboard, with battery life estimates of 53 hours (backlit on) and 400 hours (backlit off).

OPERATING INSTRUCTIONS

1. Basic Keyboard Functions

The AULA F99 Pro features a 96% layout, retaining essential arrow keys and a number pad. All keys support N-key rollover, allowing simultaneous key presses to be registered accurately.

2. RGB Lighting Control

The keyboard offers 16 RGB lighting effects. Use the following key combinations and the multi-function knob to control the backlighting:

- **Fn + Shift (Right):** Switch light bar mode or turn off the bar backlight.
- **Fn + \|:** Switch between 15 RGB light effects or turn off backlight.
- **Fn + Tab:** Switch lighting color.

- **Fn + ↑**: Increase lighting brightness.
- **Fn + ↓**: Decrease lighting brightness.
- **Fn + →**: Increase lighting speed.
- **Fn + ←**: Decrease lighting speed.

In **Lighting Control Mode** (activated by long-pressing the knob for 5 seconds), rotate the knob to adjust brightness and click to switch lighting effects.



Image: A detailed diagram illustrating the functions of the Multimedia & Backlight Control Knob on the AULA F99 Pro keyboard, showing how to adjust brightness, switch lighting effects, adjust volume, and play/pause media.

3. Multimedia Control

In **Multimedia Mode** (activated by long-pressing the knob for 5 seconds), rotate the knob to adjust the volume and click to play or pause media.

4. Macro Customization

The keyboard supports macro customization, allowing users to record and edit macros, customize key functions, and set 16.8 million light colors. It also supports musical rhythm lighting effects. Driver software is required for these

advanced customizations. The driver currently supports Windows systems under wired mode. Users can download the driver via the provided link in the product documentation or manufacturer's website.



Image: A screenshot of the AULA F99 Pro's driver software interface, demonstrating options for customizing RGB backlighting, macro recording and editing, and custom shortcut keys. The image notes that the driver supports Windows systems under wired mode.

MAINTENANCE

1. Keycap and Switch Replacement

The AULA F99 Pro is hot-swappable, allowing for easy replacement of keycaps and switches. Use the included keycap/switch puller tool for this process. Ensure the keyboard is powered off before attempting to remove or install switches.

1. PCB Hot Swappable Socket

Support 3-pin/5-pin Switches



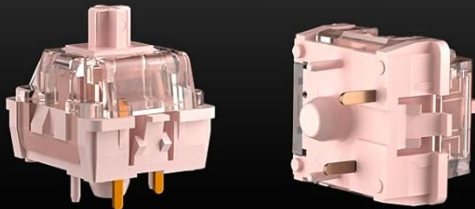
South facing lighting



2. Pre-lubed Silent Switches

LEOBOG Feather Switch

Silent, smooth, quick response



Total key stroke: $3.5 \pm 0.3\text{mm}$

Conduction pressure: $36 \pm 3\text{gf}$

Initial pressure: 29gfMin

Bottom pressure: $48 \pm 3\text{gf}$

Conduction stroke: $1.6 \pm 0.3\text{mm}$

Mechanical life: about 60,000,000 times

3. Side-Printed PBT Keycaps

Shine through fonts, PBT anti-sweat, never fade



Image: A detailed view of the AULA F99 Pro's PCB hot-swappable sockets, supporting 3-pin/5-pin switches, and a close-up of the pre-lubed LEOBOG Feather Silent Switches with their specifications.

2. Cleaning

Regularly clean your keyboard to maintain performance. Use a soft brush or compressed air to remove dust and debris from between the keycaps. For deeper cleaning, remove keycaps using the puller and wipe the surface with a damp cloth. Avoid using harsh chemicals.

3. Battery Care

To prolong battery life, avoid fully discharging the battery frequently. Charge the keyboard when the battery indicator suggests low power. Store the keyboard in a cool, dry place when not in use for extended periods.

TROUBLESHOOTING

- **Keyboard not responding:** Ensure the keyboard is charged and properly connected (wired, 2.4GHz dongle, or Bluetooth paired). Try switching between connection modes.
- **Wireless connection issues:** For 2.4GHz, ensure the dongle is securely plugged into a USB port. For

Bluetooth, re-pair the device if connection is lost. Ensure no strong interference sources are nearby.

- **RGB lighting not working:** Check lighting settings using Fn key combinations or the control knob. Ensure the keyboard is not in a mode where lighting is disabled.
- **Keys not registering:** If specific keys are not working, ensure the switches are properly seated. If the issue persists, consider replacing the switch using the included puller and spare switches.
- **Battery draining quickly:** Reduce RGB brightness or turn off backlighting when not needed. Ensure the keyboard is fully charged before use.


SPECIFICATIONS




Feature	Detail
Brand	AULA
Model Number	F99 Pro
Connectivity Technology	2.4GHz Wireless, BT3.0/5.0, USB Wired
Keyboard Description	Mechanical
Compatible Devices	Gaming Console, Laptop, PC, Smartphone, Tablet
Special Features	Backlit, Hot-Swappable, Programmable Keys, Silent, Volume Roller
Keyboard Backlighting Color Support	RGB
Material	Plastic
Item Weight	3.32 pounds
Package Dimensions	17.32 x 6.73 x 1.93 inches
Batteries	2 Nonstandard Battery batteries required (included)

WARRANTY AND SUPPORT

For warranty information and technical support, please refer to the documentation included with your product or visit the official AULA website. Keep your purchase receipt for warranty claims.

Related Documents - F99 Pro

	<p>AULA F99 Pro Mechanical Keyboard User Manual and Guide</p> <p>Comprehensive user guide for the AULA F99 Pro mechanical keyboard. Details include its 99-key layout, gasket structure, hot-swappable switches, multiple connectivity modes (Wired, 2.4G, Bluetooth), RGB lighting customization, system mode switching, and detailed product specifications.</p>
---	--

	<p>AULA F99 3-in-1 Hot-Swappable RGB Gasket Mechanical Keyboard User Manual</p> <p>Comprehensive user manual for the AULA F99 mechanical keyboard, detailing its features, specifications, connectivity options (wired, 2.4G, Bluetooth), RGB lighting customization, and operating instructions.</p>
	<p>AULA F99 Mechanical Keyboard User Manual</p> <p>User manual for the AULA F99 3-in-1 Hot-Swappable RGB Gasket Mechanical Keyboard, detailing its features, specifications, and operating instructions for wired, 2.4G, and Bluetooth modes.</p>
	<p>AULA F99/F99APRO 3-in-1 Hot-Swappable RGB Gasket Mechanical Keyboard User Manual</p> <p>This manual provides detailed instructions and features for the AULA F99/F99APRO mechanical keyboard, including connectivity options (2.4G, Bluetooth, Wired), RGB lighting effects, shortcut key functions, and operating instructions in multiple languages.</p>
	<p>AULA F99 PRO Gasket Mechanical Keyboard User Manual</p> <p>Comprehensive user manual for the AULA F99 PRO hot-swappable RGB gasket mechanical keyboard, covering features, connection instructions (wired, 2.4G, Bluetooth), shortcut keys, intelligent sleep mode, charging, and product specifications.</p>

[illegible]

Comprehensive guide for the AULA F99 mechanical keyboard, detailing its features, specifications, shortcut keys, and operating instructions for 2.4G, Bluetooth, and wired modes across Windows, Mac, Android, and iOS systems.