

Tongtion Adaptateur d'affichage sans fil HDMI

Tongtion Wireless Display Dongle Adapter

Instruction Manual

INTRODUCTION

The Tongtion Wireless Display Dongle Adapter is a portable device designed for seamless 1080p HDMI streaming. It supports AirPlay, Miracast, and Cast protocols, enabling wireless display from smartphones, PCs, TVs, and projectors. Featuring 5GHz WiFi for stable and low-latency transmission, this plug-and-play adapter simplifies content sharing without requiring apps, Bluetooth, or complex Wi-Fi setups. It supports 4K decoding for crisp 1080P Full HD output and offers mirror and off-screen modes for flexible viewing.



Image: The Tongtion Wireless Display Dongle Adapter, a compact black device with an HDMI connector.

WHAT'S IN THE BOX

- Tongtion Wireless HDMI Display Adapter
- USB Power Cable (USB-A to USB-C)
- HDMI Extension Cable (for convenient connection in tight spaces)
- User Manual

SETUP

The Tongtion Wireless Display Dongle Adapter is designed for plug-and-play functionality, requiring no additional apps or complex configurations for basic use. Simply connect the adapter to your display and power source.

Initial Connection Steps:

1. Connect the HDMI end of the adapter to an available HDMI port on your TV, monitor, or projector.
2. Connect the USB power cable to the adapter's USB-C port and plug the other end into a USB power source (e.g., TV's USB port, USB wall adapter). Ensure the adapter receives stable power.
3. Switch your display's input source to the corresponding HDMI port. The adapter's setup screen will appear.

DUAL MODES STREAMING



Mirror Mode

Mirror your phone onto a larger screen and enjoy streaming movies and videos



Extended Mode

Drag your laptop screen to the big screen while enjoying other activities on your laptop

Image: Visual representation of the plug-and-play setup, showing the dongle connected to a TV and powered via a wall adapter.

Screen Mirroring Steps:

For iPhone/iPad (iOS):

Steps for screen mirroring with Android/Harmony phone:

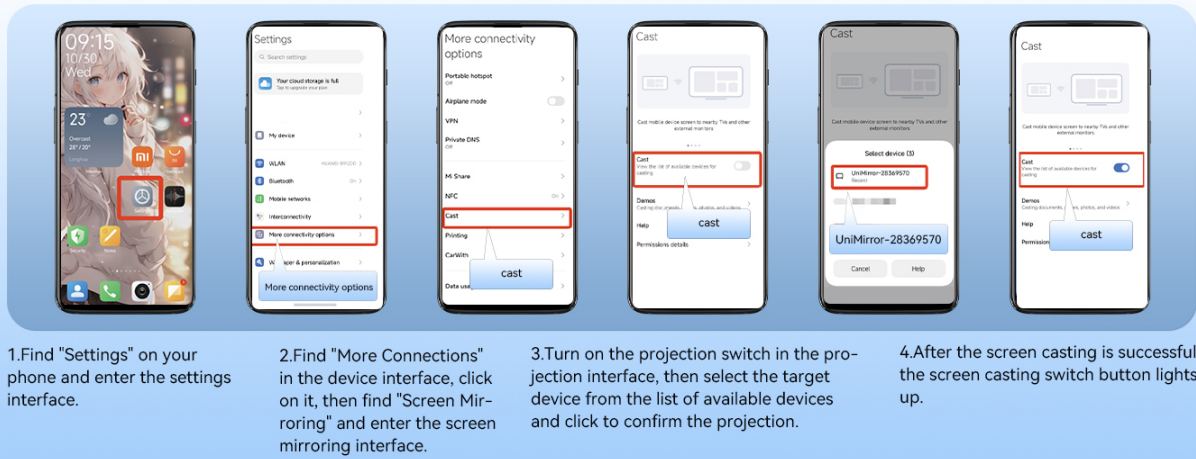


Image: Step-by-step guide for connecting iOS devices via AirPlay.

1. Use your Apple device, swipe down from the top of the screen to open the Control Center, then tap the screen mirroring icon.
2. Select the target device (e.g., "UniMirrorLite-XXXX") from the list of available devices and click to confirm the screen projection.
3. For the first connection of an Apple device, you may need to enter the SSID password. The screen mirroring interface will display the password for the corresponding SSID; just enter it.
4. After a successful projection, the corresponding device code will be checked, and the screen will be mirrored to the designated display device.

For Android/Harmony Phone:

Steps for screen mirroring with Android/Harmony tablet:

1. Find "Settings" on your tablet and enter the settings interface.
2. Find "More Connections" in the device interface, click on it, then find "Screen Mirroring" and enter the screen mirroring interface.
3. Turn on the projection switch in the projection interface, then select the target device from the list of available devices and click to confirm the projection.
4. After the screen casting is successful, the screen casting switch button lights up.

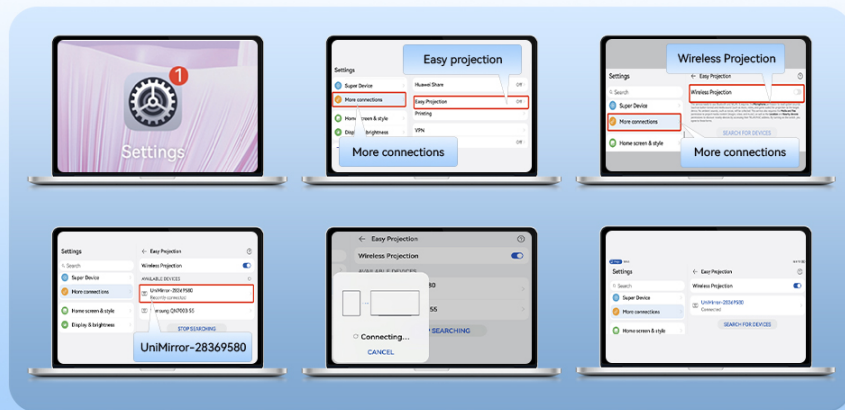
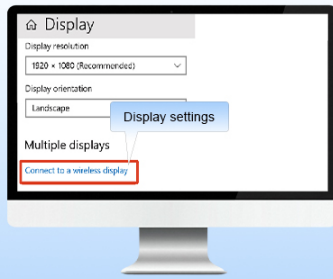


Image: Step-by-step guide for connecting Android/Harmony phones via Miracast/Cast.

1. Find "Settings" on your phone and enter the settings interface.
2. Find "More Connections" in the device interface, click on it, then find "Screen Mirroring" and enter the screen mirroring interface.
3. Turn on the projection switch in the projection interface, then select the target device from the list of available devices and click to confirm the projection.
4. After the screen casting is successful, the screen casting switch button lights up.

For Android/Harmony Tablet:

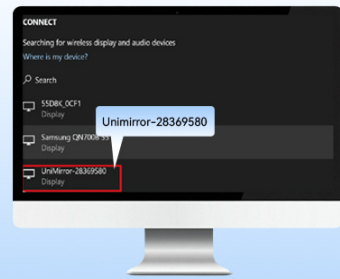
Steps for screen mirroring with Windows PC:



1. Click the right mouse button, find the "Display Settings" option and click to enter the screen interface.



2. Find "Multiple Displays" on the screen interface, click the drop-down arrow, find the "Connect to Wireless Display" option, then click Connect



3. After clicking the link, a list of available displays will pop up in the lower right corner of your laptop. Find the device you want to project to and connect it. After a successful connection, the display will show its projection status, and options such as copy, extend, etc. will be available.

Image: Step-by-step guide for connecting Android/Harmony tablets via Miracast/Cast.

1. Find "Settings" on your tablet and enter the settings interface.
2. Find "More Connections" in the device interface, click on it, then find "Screen Mirroring" and enter the screen mirroring interface.
3. Turn on the projection switch in the projection interface, then select the target device from the list of available devices and click to confirm the projection.
4. After the screen casting is successful, the screen casting switch button lights up.

For Windows PC:

Steps for screen mirroring with iPhone/iPad:



1. Use your Apple device, swipe down from the top of the screen to open the Control Center, then tap the screen mirroring icon.



2. Select the target device from the list of available devices and click to confirm the screen projection.



3. For the first connection of an Apple device, you may need to enter the SSID password. The screen mirroring interface will display the password for the corresponding SSID, just enter it.



4. After a successful projection, the corresponding device code will be checked, and the screen will be mirrored to the designated display device.

Image: Step-by-step guide for connecting Windows PCs via Wireless Display.

1. Click the right mouse button, find the "Display Settings" option and click to enter the screen interface.
2. Find "Multiple Displays" on the screen interface, click the drop-down arrow, find the "Connect to Wireless Display" option, then click Connect.
3. After clicking the link, a list of available displays will pop up in the lower right corner of your laptop. Find the device you want to project to and connect it. After a successful connection, the display will show its projection status, and options such as copy, extend, etc. will be available.

OPERATING INSTRUCTIONS

Display Modes:

The Wireless HDMI Display Adapter supports both mirror mode and extended mode for versatile usage.

SUPPORTS 4K INPUT 1080P FULL HD OUTPUT



Image: Illustration of Mirror Mode (mirroring phone to larger screen) and Extended Mode (extending laptop screen).

- **Mirror Mode:** Duplicate your device's screen onto the connected display. Ideal for presentations, sharing photos, or watching videos on a larger screen.
- **Extended Mode:** Extend your desktop or device screen to the connected display, allowing for multitasking.

Screen Rotation and Zoom:

The adapter features a button in the middle that allows you to easily zoom in and out of the screen or rotate the display to enhance your viewing experience.

STEADY TRANSMISSION

High-tech molecular materials used
will not affect the signal transmission

Screen rotation and zoom

Image: The adapter showing the button for screen rotation and zoom.

5GHz Stable Transmission:

The adapter utilizes 5GHz wireless transmission for fast, stable, and low-latency connections, ensuring smooth streaming and minimal interference.

2.4G/5G HIGH-SPEED TRANSMISSION

With 2.4GHz/5GHz frequency bands it ensures stable video transmission and reduced interference



Image: Diagram illustrating the 2.4G/5G dual-band transmission for stable video.

COMPATIBILITY

The Tongtion Wireless Display Dongle Adapter offers broad compatibility with various operating systems and devices, supporting multiple wireless protocols.

Supported Devices & Protocols:

- **Operating Systems:** iOS, Android, Windows, macOS

- **Wireless Protocols:** AirPlay, DLNA, Miracast, Cast

Supported Applications:

The adapter supports mirroring content from a wide range of applications, including:

- YouTube, Twitch, Reddit, Facebook, Dailymotion
- Safari, Microsoft Office, TikTok, Meta, Twitter

Unsupported Applications & Devices:

Due to HDCP (High-bandwidth Digital Content Protection) video copyright protection, the adapter is NOT compatible with certain paid streaming apps. Additionally, some Google-based devices are not supported.

- **Paid Streaming Apps:** Netflix, Amazon Prime Videos, Hulu, Comcast TV, Xfinity, Vudu, Sky Go, BT Sport, etc.
- **Google Devices:** Google Pixel series, Google Mobile Services, Chromecast TV.
- **Other:** Not recommended for gaming due to potential latency.



Image: A visual chart detailing compatible operating systems and applications.

MAINTENANCE

To ensure the longevity and optimal performance of your Tongtion Wireless Display Dongle Adapter, follow these maintenance guidelines:

- **Cleaning:** Use a soft, dry cloth to wipe the device. Avoid liquid cleaners or abrasive materials.
- **Storage:** Store the adapter in a cool, dry place away from direct sunlight and extreme temperatures.
- **Handling:** Handle the device with care. Avoid dropping it or subjecting it to strong impacts.

- **Disassembly:** Do not attempt to disassemble or repair the device yourself, as this will void the warranty and may cause damage.

TROUBLESHOOTING

If you encounter issues with your Wireless Display Dongle Adapter, please refer to the following common problems and solutions:

- **No Display/Black Screen:**
 - Ensure the adapter is securely connected to the HDMI port on your display.
 - Verify that the USB power cable is properly connected and the adapter is receiving sufficient power.
 - Check that your TV/monitor input source is set to the correct HDMI port.
- **Unstable Connection/Lag:**
 - Ensure your device is within the recommended 30ft range of the adapter.
 - Minimize physical obstructions between your device and the adapter.
 - Confirm that your device's Wi-Fi is set to 5GHz for optimal performance, if applicable.
- **No Audio:**
 - Check your source device's audio output settings and ensure it is directed to the connected display.
 - Verify that the display's volume is turned up and not muted.
- **Overheating:**
 - It is normal for the dongle to generate some heat during operation. If it becomes excessively hot, disconnect it and allow it to cool down before resuming use.
 - Ensure adequate ventilation around the device.
- **Incompatibility with Certain Apps (e.g., Netflix, Hulu):**
 - This is due to HDCP (High-bandwidth Digital Content Protection) video copyright protection. The adapter is not designed to bypass these restrictions.
- **Incompatibility with Google Pixel/Mobile Services:**
 - The adapter is not compatible with all Google protocol devices, including Google Pixel series and Google Mobile Services.

SPECIFICATIONS




Feature	Detail
Brand	Tongtion
Model Name	Wireless HDMI Display Adapter
Item Model Number	Adaptateur d'affichage sans fil HDMI
Connectivity Technology	HDMI
Connector Type	HDMI




Resolution	1080p (Supports 4K decoding for 1080P Full HD output)
Special Feature	Miracast, AirPlay, DLNA, Cast
Wireless Transmission	5GHz WiFi
Item Weight	3.2 ounces
Product Dimensions	0.7 x 4.3 x 5.9 inches
Color	Black
First Available Date	May 15, 2025

WARRANTY AND SUPPORT

For support or warranty inquiries regarding your Tongtion Wireless Display Dongle Adapter, please contact Tongtion customer service through the retailer's platform where you purchased the product. Keep your purchase receipt or order details handy for faster service.

Related Documents - Adaptateur d'affichage sans fil HDMI

	<p>Aimibo Wireless HDMI Transmitter and Receiver Cable: Specifications, Installation, and Usage Guide</p> <p>A comprehensive guide to the Aimibo Wireless HDMI Transmitter and Receiver Cable, detailing its specifications, package contents, installation steps, re-pairing procedures, and firmware update process for seamless 1080P wireless streaming.</p>
	<p>Lemorele Wireless HDMI Transmitter and Receiver User Manual</p> <p>This user manual provides instructions for the Lemorele Wireless HDMI Transmitter and Receiver, a device that extends HDMI signals wirelessly between laptops, PCs, projectors, and monitors. It supports 2.4/5GHz frequencies and offers plug-and-play functionality.</p>
	<p>How to Pair LXJADAP Wireless Mirror Adapter</p> <p>Step-by-step instructions on how to pair the LXJADAP Wireless Mirror Adapter if the TX light keeps flashing, ensuring a successful connection between the transmitter and receiver.</p>

	<p>4URPC SP001 Wireless USB C to HDMI Adapter User Guide</p> <p>User guide for the 4URPC SP001 Plug-and-Play Wireless USB C to HDMI Transmitter and Receiver, detailing product overview, specifications, and connection steps for seamless streaming up to 98 feet.</p>
	<p>Yehua Wireless HDMI Transmitter and Receiver User Manual</p> <p>User guide for the Yehua Wireless HDMI Transmitter and Receiver, detailing connection, pairing, troubleshooting, and accessories. Enables plug-and-play wireless streaming of video and audio from devices to displays.</p>
<p>Thank you for purchasing from our store. Please contact our Email if you have any question about this item: support.en@necitech.com</p>  <p>This code is connection ways we make. Don't worry, please! You can clearly to see our wireless HDMI dongle via this install video.)</p>	<p>MiraScreen Wireless HDMI Dongle: Setup Guide and FAQ</p> <p>Comprehensive guide on how to set up and use the MiraScreen Wireless HDMI Dongle for streaming content from Apple, Android, and Windows devices to your TV. Includes installation steps, troubleshooting, and FAQs.</p>